

Cubigel Compressors, Compressor, GQY80AT, 1/4Hp, LBP, R134a, 8.1cmc, 165 W, REFRIGERATEUR INDESIT

Category: compressor

written by www.mbsm.pro | 21 March 2021

Compresor GQY80AT, freon R134a, capacitate 8.1 cmc, capacitate frigorifica ASHRAE 222 W, capacitate frigorifica CECOMAF 165 W, racire statica #GQY80AT

Model: GQY80AT

Freon: R134a

Capacitate: 8.1 cmc

Capacitate frigorifica ASHRAE: 222 W

Capacitate frigorifica CECOMAF: 165 W

35 -30 -25 -10 w COP

- 451.00.3301 GD40AAa / GUY40AA 1/10 S 4.03 34 49 70 0.77 154 C 200 6.7 RSIR P •
- 451.00.3202 GD40AA 1/10 S 4.03 34 49 70 0.77 154 C 200 6.7 RSIR P •
- 451.00.3302 GL45AA / GUY44AA 1/8 S 4.55 37 56 81 0.81 183 C 265 8.3 RSIR P •
- 451.00.3303 GL60AA / GUY57AA 1/6 S 5.99 50 75 107 0.85 238 C 265 9.1 RSIR P •
- 451.00.3304 GL75AA / GUY66AA 1/5 S 6.65 57 85 121 0.87 267 C 345 9.6 RSIR P •
- 451.00.3305 GL80AA / GUY75AA 1/5 S 7.52 68 101 144 0.89 326 C 345 9.9 RSIR P •
- 451.00.3104 GL80AAb 1/5 OC 8.10 68 101 144 0.89 326 C-V 345 9.9 CSIR R •
- 451.00.3005 GL90AA 1/4 S 9.08 82 119 165 0.90 350 C 345 10.2 RSIR P •
- 451.00.3306 GL90AAa / GQY80AT 1/4 S 9.08 82 119 165 0.90 350 C 345 10.2 RSIR P •
-
- 451.00.3105 GL90AAb 1/4 OC 9.08 82 119 165 0.90 350 C-V 345 10.2 CSIR R •
- 451.00.3205 GL90AAb 1/4 F 9.08 82 119 165 0.90 350 C-V 345 10.2 CSIR R •
- 451.00.3325 GL90AAa 1/4 OC 9.08 82 119 165 0.90 350 C-V 345 10.2 CSIR R •
- 451.00.3106 GP12BB 1/3 OC 12.00 83 131 190 0.88 424 C 400 11.5 RSIR R •
- 451.00.3206 GP12FB 1/3 F 12.00 83 131 190 0.88 424 C 400 11.5 RSIR R •
- 451.00.3326 GP12BB 1/3 OC 12.00 83 131 190 0.88 424 C 400 11.5 RSIR R •
- 451.00.3218 GP14CB 3/8 F 14.17 99 158 228 0.90 509 C 400 11.5 RSIR R •
- 451.00.3223 GP16FB 3/8 F 16.15 109 182 266 0.89 585 C-V 530 12.0 CSIR R •
- 451.00.3224 GX18FB 3/7 F 18.40 123 199 291 0.91 660 C-V 500 15.1 CSIR R •
- 451.00.3225 GX21FB 2/3 F 20.72 151 243 351 0.93 778 C-V 500 15.5 CSIR R •
- 451.00.3403 GL45TB 1/6 F 4.50 76 134 342 1.62 412 C-V 300 8.4 CSIR R •
- 451.00.3503 GL45PB 1/6 F 4.50 76 134 342 1.62 412 C-V 300 8.4 CSIR R •
- 451.00.3404 GL60TB 1/5 F 5.67 95 170 437 1.82 527 C-V 300 9.5 CSIR R •
- 451.00.3504 GL60PB 1/5 F 5.67 95 170 437 1.82 527 C-V 300 9.5 CSIR R •
- 451.00.3406 GL80TB 1/5 F 7.57 111 212 554 1.83 667 C-V 300 9.5 CSIR R •
- 451.00.3505 GL90TB 1/4 F 8.85 142 259 661 1.91 796 C-V 300 10.8 CSIR R •
- 451.00.3506 GP12TB 3/8 F 12.05 169 338 893 1.80 1077 C-V 350 11.2 CSIR R •
- 451.00.3418 GP14TB 3/8 F 14.00 190 373 999 1.77 1208 C-V 400 11.5 CSIR R •
- 451.00.3513 GP14TB 3/8 F 14.00 190 373 999 1.77 1208 C-V 400 11.5 CSIR R •
- 451.00.3419 GX18TB 1/2 F 18.40 285 539 1390 1.91 1673 C-V 500 16.0 CSIR R •
- 451.00.3420 GX21TB 5/8 F 20.72 332 603 1550 1.90 1866 C-V 500 17.0 CSIR R •
- 451.00.3421 GX23TB 5/8 F 23.20 368 677 1730 1.89 2083 C-V 500 17.0 CSIR R •
- 451.00.3422 GS26TB 3/4 F 25.93 392 771 2071 2.09 1011 C-V 887 22.7 CSIR R •

451.00.3423 GS30TB 7/8 F 29.95 317 785 2452 2.33 3020 C-V 887 22.7 CSR R •
• 451.00.3424 GS34TB 1 F 34.42 476 1068 2852 2.28 3421 C-V 887 22.7 CSR R •



Private Picture Copyright : WWW.MBSM.PRO

BAJA presión					serie LBP										R-134a				
CÓDIGO REMLE	MODELO	Potencia	Enfri.	Cilindr.	Producción Frigorífica en Watts.								Expansión	Acelte cm3	Peso Kg.	Motor	Arranque	220-240V/50Hz	
• Gases sustitutos del R-12 y R-134a.					CECOMAF (W)														
• Últimas existencias					-35	-30	-25				-10								
					w	COP													
• 451.00.3301	GD40AAa / GVV40AA	1/10	S	4.03	34	49	70	0.77	154	C	200	6.7	RSIR	P	•				
• 451.00.3202	GD40AA	1/10	S	4.03	34	49	70	0.77	154	C	200	6.7	RSIR	P	•				
• 451.00.3302	GL45AA / GVV44AA	1/8	S	4.55	37	56	81	0.81	183	C	265	8.3	RSIR	P	•				
• 451.00.3303	GL60AA / GVV57AA	1/6	S	5.99	50	75	107	0.85	238	C	265	9.1	RSIR	P	•				
• 451.00.3304	GL75AA / GVV66AA	1/5	S	6.65	57	85	121	0.87	267	C	345	9.6	RSIR	P	•				
• 451.00.3305	GL80AA / GVV75AA	1/5	S	7.52	68	101	144	0.89	326	C	345	9.9	RSIR	P	•				
• 451.00.3104	GL80AAb	1/5	OC	8.10	68	101	144	0.89	326	C-V	345	9.9	CSIR	R	•				
• 451.00.3005	GL90AA	1/4	S	9.08	82	119	165	0.90	350	C	345	10.2	RSIR	P	•				
• 451.00.3306	GL90AAa / GQY80AT	1/4	S	9.08	82	119	165	0.90	350	C	345	10.2	RSIR	P	•				
• 451.00.3105	GL90AAb	1/4	OC	9.08	82	119	165	0.90	350	C-V	345	10.2	CSIR	R	•				
• 451.00.3205	GL90AAb	1/4	F	9.08	82	119	165	0.90	350	C-V	345	10.2	CSIR	R	•				
• 451.00.3325	GL90AAa	1/4	OC	9.08	82	119	165	0.90	350	C-V	345	10.2	CSIR	R	•				
• 451.00.3106	GP12BB	1/3	OC	12.00	83	131	190	0.88	424	C	400	11.5	RSIR	R	•				
• 451.00.3206	GP12FB	1/3	F	12.00	83	131	190	0.88	424	C	400	11.5	RSIR	R	•				
• 451.00.3326	GP12BB	1/3	OC	12.00	83	131	190	0.88	424	C	400	11.5	RSIR	R	•				
451.00.3218	GP14CB	3/8	F	14.17	99	158	228	0.90	509	C	400	11.5	RSIR	R	•				
451.00.3223	GP16FB	3/8	F	16.15	109	182	266	0.89	585	C-V	530	12.0	CSIR	R	•				
451.00.3224	GX18FB	3/7	F	18.40	123	199	291	0.91	660	C-V	500	15.1	CSIR	R	•				
451.00.3225	GX21FB	2/3	F	20.72	151	243	351	0.93	778	C-V	500	15.5	CSIR	R	•				

Private Picture Copyright: WWW.MBSM.PRO

ALTA - MEDIA presión					serie HMBP										R-134a				
CÓDIGO REMLE	MODELO	Potencia	Enfriamiento	Cilindrada	Producción Frigorífica en Watts.								Expansión	Acelte cm3	Peso Kg.	Motor	Arranque	220-240V/50Hz	
• Gases sustitutos de R-12 y R-134a.					CECOMAF (W)														
• Últimas existencias					-25	-15	5				10								
					w	COP													
• 451.00.3403	GL45TB	1/6	F	4.50	76	134	342	1.62	412	C-V	300	8.4	CSIR	R	•				
• 451.00.3503	GL45PB	1/6	F	4.50	76	134	342	1.62	412	C-V	300	8.4	CSIR	R	•				
• 451.00.3404	GL60TB	1/5	F	5.67	95	170	437	1.82	527	C-V	300	9.5	CSIR	R	•				
• 451.00.3504	GL60PB	1/5	F	5.67	95	170	437	1.82	527	C-V	300	9.5	CSIR	R	•				
451.00.3406	GL80TB	1/5	F	7.57	111	212	554	1.83	667	C-V	300	9.5	CSIR	R	•				
• 451.00.3505	GL90TB	1/4	F	8.85	142	259	661	1.91	796	C-V	300	10.8	CSIR	R	•				
• 451.00.3506	GP12TB	3/8	F	12.05	169	338	893	1.80	1077	C-V	350	11.2	CSIR	R	•				
• 451.00.3418	GP14TB	3/8	F	14.00	190	373	999	1.77	1208	C-V	400	11.5	CSIR	R	•				
• 451.00.3513	GP14TB	3/8	F	14.00	190	373	999	1.77	1208	C-V	400	11.5	CSIR	R	•				
451.00.3419	GX18TB	1/2	F	18.40	285	539	1390	1.91	1673	C-V	500	16.0	CSIR	R	•				
451.00.3420	GX21TB	5/8	F	20.72	332	603	1550	1.90	1866	C-V	500	17.0	CSIR	R	•				
451.00.3421	GX23TB	5/8	F	23.20	368	677	1730	1.89	2083	C-V	500	17.0	CSIR	R	•				
• 451.00.3422	GS26TB	3/4	F	25.93	392	771	2071	2.09	1011	C-V	887	22.7	CSIR	R	•				
451.00.3423	GS30TB	7/8	F	29.95	317	785	2452	2.33	3020	C-V	887	22.7	CSR	R	•				
• 451.00.3424	GS34TB	1	F	34.42	476	1068	2852	2.28	3421	C-V	887	22.7	CSR	R	•				

Private Picture Copyright: WWW.MBSM.PRO

BAJA presión					serie LBP										R-600a			
CÓDIGO REMLE	MODELO	Potencia	Enfriamiento	Cilindrada	Producción Frigorífica en Watts.								Expansión	Acelte cm3	Peso Kg.	Motor	Arranque	220-240V/50Hz
					-35	-30	-25	-23.3	-20	-15	-10							
451.00.0605	HQY55AA	1/9	S	5.46	28	44	62	69	83	105	130	C	210	8.9	RSIR/RSCR	P	•	
451.00.0610	HQY70AA	1/8	S	6.64	42	59	80	88	104	131	161	C	210	9.0	RSIR/RSCR	P	•	
451.00.0615	HLY99AA	1/6	S	9.93	69	90	119	130	155	198	248	C	345	9.6	RSIR/RSCR	P	•	
451.00.0620	HPY12AA	1/5	S	12.10	79	107	143	157	187	239	299	C	300	10.7	RSIR/RSCR	P	•	
451.00.0625	HPY14AA	1/5	S	14.31	92	124	165	181	215	274	342	C	300	11.0	RSIR/RSCR	P	•	
451.00.0630	HPY16AA	1/4	S	16.14	102	136	180	198	236	302	379	C	300	11.2	RSIR/RSCR	P	•	

Private Picture Copyright: WWW.MBSM.PRO

ALTA - MEDIA presión **serie HMBP** **R-22**

CÓDIGO REMLE	MODELO	Potencia	Enfriamiento	Cilindrada	Producción Frigorífica en Vatios.								Expansión	Aceite cm3	Peso Kg.	Motor	Arranque	220-240V/50Hz
					-20	-15	-10	-5	0	5	7.2	10						
451.00.1404	L45TN	1/5	F	4.50	157	206	265	333	410	496	537	592	C-V	400	9.5	CSIR	P	•
451.00.1405	L57TN	1/4	F	5.67	194	255	327	410	505	610	660	727	C-V	300	9.5	CSIR	R	•
451.00.1428	L76TN	3/8	F	7.57	268	347	441	550	675	814	881	969	C-V	470	10.0	CSIR	R	•
451.00.1408	L88TN	3/8	F	8.85	523	416	527	658	806	973	1052	1159	C-V	400	10.6	CSIR	R	•
451.00.1409	P12TN	1/2	F	12.00	412	537	689	868	1075	1309	1421	1570	C-V	400	12.3	CSR	R	•
451.00.1416	S22TN	7/8	F	21.77	645	890						3000	C-V	887	22.7	CSR	R	•
451.00.1418	S26TN	1 1/4	F	25.93	857	1182	1561	1993	2480	3021	3275	3615	C-V	887	22.7	CSR	R	•

Private Picture Copyright : WWW.MBSM.PRO

ALTA - MEDIA presión **serie HMBP** **sustituto del R-404a - R507 (*)**

220-240V 50Hz

CÓDIGO REMLE	MODELO	CV	Enfr.	Cil. cm3	Int. A	Conex.		Conex. aspir. Rotalock	Rendimientos (Wattios)*				Aplic.
						ODF	Rotalock		+7,2	-0°C	-5°C	-10°C	
451.00.0299	ML40TB	1/6	F	4.04	2,03	1/4"	-	3/16"	516	387	320	260	C-V
451.00.0300	ML45TB	1/5	F	4.50	2,19	1/4"	-	3/16"	559	432	356	289	C-V
451.00.0305	ML60TB	1/4	F	5.67	2,77	1/4"	-	3/16"	686	525	428	343	C-V
451.00.0310	ML80TB	3/8	F	7.57	3,27	1/4"	-	3/16"	931	720	590	475	C-V
451.00.0315	ML90TB	3/8	F	8.85	3,98	1/4"	-	3/16"	1118	861	705	569	C-V
451.00.0321	MP12RB	1/2	F	12.00	3,80	5/16"	-	1/4"	1765	1379	1142	931	C-V
451.00.0323	MP14RB	1/2	F	14.00	4,86	5/16"	-	1/4"	1765	1379	1142	931	C-V
451.00.0325	MX18TB	7/8	F	18.12	6,50	3/8"	-	1/4"	2275	1719	1379	1078	C-V
451.00.0326	MX21TB	1	F	21,74	6,28	3/8"	-	1/4"	2745	2063	1645	1275	C-V
451.00.0327	MS26TB-V	1 3/8	F	25.95	8,97	5/8"	1" 5/8"R	5/16"	3382	2578	2085	1647	C-V
451.00.0328	MA34TB-V	1 5/8	F	34,42	11,50	5/8"	1" 5/8"R	5/16"	4450	3480	2870	2310	C-V

Private Picture Copyright : WWW.MBSM.PRO

BAJA presión **serie LBP** **sustituto del R-404a - R507 (*)**

220-240V 50Hz

CÓDIGO REMLE	MODELO	CV	Enfr.	Cilindr. cm3	Int. A	Conex. aspir.		Conex. descar. ODF	Rendimientos (Wattios)*			Aplic.
						ODF	Rotalock		-35°C	-25°C	-10°C	
451.00.0450	ML45FB	1/6	F	4,60	1,58	1/4"	-	3,16"	70	130	270	C-V
451.00.0455	ML60FB	1/5	F	6,00	1,77	1/4"	-	3,16"	100	180	340	C-V
451.00.0460	ML80FB	1/4	F	8,10	2,21	1/4"	-	3,16"	140	250	490	C-V
451.00.0465	ML90FB	1/3	F	8,85	2,24	1/4"	-	3/16"	150	280	530	C-V
451.00.0470	MP12FB	3/8	F	12,00	2,88	3/8"	-	1/4"	170	350	720	C-V
451.00.0471	MP14FB	1/2	F	14,00	3,38	3/8"	-	1/4"	200	400	850	C-V
451.00.0472	MPT14LA [®]	1/2	F	14,32	2,70	3/8"	-	1/4"	360	550	1000	C-V
451.00.0473	MX18FBa	5/8	F	18,20	2,97	3/8"	-	1/4"	210	510	1160	C-V
451.00.0474	MX23FB	7/8	F	23,20	3,78	3/8"	-	1/4"	380	720	1450	C-V
451.00.0475	MS26FB-V	3/4	F	26,15	4,72	5/8"	1" 5/8"R	5/16"	360	820	1570	C-V
451.00.0476	MS30FB-V	7/8	F	30,00	5,60	5/8"	1" 5/8"R	5/16"	420	940	1900	C-V
451.00.0477	MS34FB-V	1	F	34,25	6,68	5/8"	1" 5/8"R	5/16"	480	1090	2230	C-V

Private Picture Copyright : WWW.MBSM.PRO

FRÍO DOMÉSTICO / COMERCIO

ALTA - MEDIA presión

serie HMBP

CÓDIGO REMLE	MODELO	Potencia	Enfriam.	Cilind.	Producción Frigorífic en Watts.										Expans.	Aceite cm3	Peso Kg.	Motor	Arranq.	Modelos MIX Sustitutos R-12 / 134a
Últimas existencias					-25	-20	-15	-10	-5	0	5	7.2	10	Sustitutos R-12 / R134a						
451.00.0403	L45PX	1/6	F	4.50	77	101	132	169	214	266	325	353	390	C	300	8.4	RSIR	R	GL45PB	451.00.3503
451.00.0404	L57PX	1/5	F	5.67	98	130	171	221	279	346	421	457	505	C	300	9.5	RSIR	R	GL60PB	451.00.3504
451.00.0405	L88TY	1/4	F	8.85	165	215	277	351	437	535	645	697	767	C-V	400	11.2	CSIR	R	GL90TB	451.00.3505
451.00.0406	P12TY	3/8	F	12.00	209	274	357	458	577	714	869	943	1043	C-V	400	11.2	CSIR	R	GP12TB	451.00.3506
451.00.0412	S26TY	7/8	F	25.93	392	565	771	1011	1284	1591	1930	2090	2303	C-V	887	22.7	CSIR	R	GS26TB-V	451.00.3422
451.00.0413	P14TY	7/16	F	14.00	243	318	412	526	659	812	983	1065	1174	C-V	400	11.5	CSIR	R	GP14TB	451.00.3513
451.00.0417	S34TY	1 1/5	F	34.42	644	886	1172	1501	1873	2289	2748	2963	3249	C-V	887	22.7	CSIR	R	GS34TB-V	451.00.3424

Private Picture Copyright : WWW.MBSM.PRO



BAJA presión

serie LBP

CÓDIGO REMLE	MODELO	Potencia	Enfriam.	Cilind.	Producción Frigorífic en Watts.								Expans.	Aceite cm3	Peso Kg.	Motor	Arranq.	Modelos MIX Sustitutos R-12 / 134a
Últimas existencias					-35	-30	-25	-23.3	-20	-15	-10	Sustitutos R-12 / R134a						
451.00.0202	D40AS	1/10	S	4.00	40	56	74	81	96	121	149	C	240	6.7	RSIR	P	GD40AAa	451.00.3301
451.00.0002	L45AV	1/8	S	4.50	39	57	79	87	105	136	171	C	300	8.4	RSIR	R	GL45AA	451.00.3302
451.00.0003	L55AV	1/6	S	5.47	49	73	101	112	134	171	211	C	470	9.5	RSIR	R	GL60AA	451.00.3303
451.00.0004	L76AV	1/5	S	7.57	58	89	125	139	168	217	271	C	530	10.5	RSIR	R	GL75AA	451.00.3304
451.00.0104	L76BV	1/5	OC	7.57	58	89	125	139	168	217	271	C	530	10.5	RSIR	R		
451.00.0005	L88AV	1/4	S	8.85	69	107	150	167	200	255	317	C	530	11.0	RSIR	R	GL80AA	451.00.3305
451.00.0105	L88BV	1/4	OC	8.85	69	107	150	167	200	255	317	C	530	11.0	RSIR	R	GL90AAa OC	451.00.3325
451.00.0205	L88FW	1/4	F	8.85	69	107	150	167	200	255	317	C-V	530	10.0	RSIR	R	GL90AAb	451.00.3205
451.00.0106	P12BW	1/3	OC	12.00	79	132	192	215	261	337	422	C	530	11.5	RSIR	R	GP12BB OC	451.00.3326
451.00.0206	P12FW	1/3	F	12.00	79	132	192	215	261	337	422	C-V	530	11.5	RSIR	R	GP12FB	451.00.3206

Private Picture Copyright : WWW.MBSM.PRO

Compresor GQY80AT, freon R134a, capacitate 8.1 cmc, capacitate frigorifica ASHRAE 222 W, capacitate frigorifica CECOMAF 165 W, racire statica #GQY80AT

Model: GQY80AT

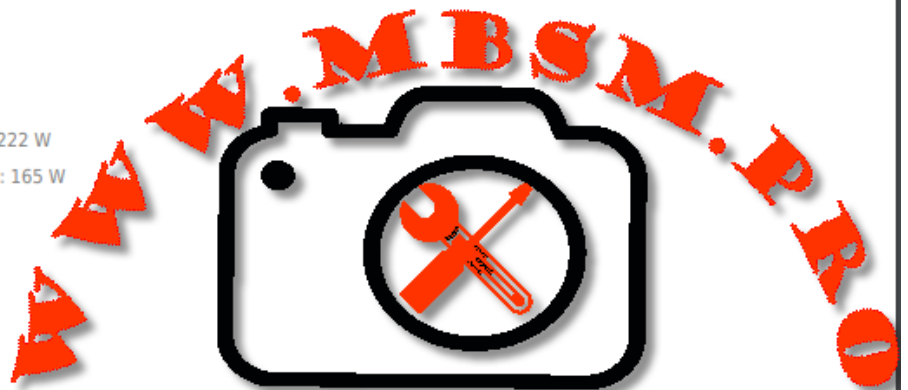
Freon: R134a

Capacitate: 8.1 cmc

Capacitate frigorifica ASHRAE: 222 W

Capacitate frigorifica CECOMAF: 165 W

Racire : statica



Private Picture Copyright : WWW.MBSM.PRO

Tecumseh, Compressor, 5/8HP, HMBP – R404A , R448A , R449A, MBP, CAJ9480Z, 230V

Category: compressor

written by www.mbsm.pro | 21 March 2021

Caractéristiques techniques

- Marque : TECUMSEH UNITÉ HERMÉTIQUE
- Modèle : CAJ9480Z-R
- CYLINDRÉE (CM³)15,2
- FLUIDER404A , R448A , R449A
- APPLICATIONHMBP
- PLAGÉ D'APPLICATION-25/+15
- PUISSANCE (W)1159
- PUISSANCE FRIGORIFIQUE (TK+40°C)15/3350 5/2355 -10/1294 -25/609
- TENSION (V)240/1/50
- DÉMARRAGECSR
- I.MAX (A)6,7
- Ø ASPIRATION1/2
- Ø REFOULEMENT5/16
- DIMENSIONS (MM)235x178x280
- Gaz: **R-404a**
- Température/Pression: **Haute Pression**
- Puissance: **5/8 HP**
- Voltage: **230 V**
- Type De Courant: **Monophasé**
- Fréquence: **50 Hz**
- Type De Compresseur: **Hermétique**
- Décalage: **15.2 cm³**
- Cons.Énergie -25°C: **496 W**
- Cons.Énergie -10°C: **669 W**
- Cons.Énergie -5°C: **718 W**
- Cons.Énergie 0°C: **762 W**
- Cons.Énergie +5°C: **798 W**
- Cons.Énergie +10°C: **828 W**
- T° De Condensation: **40 °C**
- Capacité Frigorífica -25°C: **524 Kcal/h**
- Capacité Frigorífica -20°C: **692 Kcal/h**
- Capacité Frigorífica -15°C: **887 Kcal/h**
- Capacité Frigorífica -10°C: **1113 Kcal/h**
- Capacité Frigorífica -5°C: **1374 Kcal/h**
- Capacité Frigorífica 0°C: **1677 Kcal/h**
- Capacité Frigorífica 5°C: **2025 Kcal/h**
- Capacité Frigorífica 10°C: **2425 Kcal/h**
- Tipo Test: **EN.12900**

Compresseur L'unité Hermetique – Tecumseh CAJ9480Z – R404A, R449A, R407A, R452A
220 – 240V 1~ 50 Hz
Cylindrée = 15.2 CM3
APPLICATIONS = HBP / MHBP
Moteur type: CSR



Private Picture Copyright : WWW.MBSM.PRO



Private Picture Copyright : WWW.MBSM.PRO



Private Picture Copyright : WWW.MBSM.PRO



Private Picture Copyright : WWW.MBSM.PRO



Private Picture Copyright : WWW.MBSM.PRO





● ○ REDMI NOTE 9 PRO
∞ AI QUAD CAMERA

Private Picture Copyright : WWW.MBSM.PRO





● ○ REDMI NOTE 9 PRO
∞ AI QUAD CAMERA

Private Picture Copyright : WWW.MBSM.PRO

Mbsm_dot_pro_private_PDF_caj9480Z_2494-speceTélécharger

Compresseur AJ = Le produit de référence associant silence, fiabilité et

efficacité du froid commercial.

Product Code	Model Number	Compressor Horsepower	Compressor Displacement	Cooling	Oil Charge
	CAJ9480Z-FZ	5/8 HP	15.2 cm ³ /rev	Fan	475 ml
	CAJ9510Z-FZ	1 HP	18.3 cm ³ /rev	Fan	475 ml
	CAJ9513Z-FZ	1 1/8 HP	24.2 cm ³ /rev	Fan	475 ml
	CAJ4517Z-FZ	1.25 HP	25.95 cm ³ /rev	Fan	475 ml
	TAJ4517Z-TZ	1.25 HP	25.95 cm ³ /rev	Fan	475 ml
	CAJ4519Z-FZ	1.5 HP	34.45 cm ³ /rev	Fan	475 ml
	TAJ4519Z-TZ	1.5 HP	34.45 cm ³ /rev	Fan	475 ml

Whirlpool, Aspera, NE2125E, LBP, capacitive, start inductive run, hermetic compressor, R22, 1/4Hp++ or 1/3Hp-

Category: compressor

written by www.mbsm.pro | 21 March 2021

compressor Aspera NE2125E, LBP – R22, 220-240V / 1 / 50Hz, stroke volume 8.78 cm³, LRA 11.0A, motor type CSIR, capillary tube / expansion valve operation, oil AB 46.Cooling

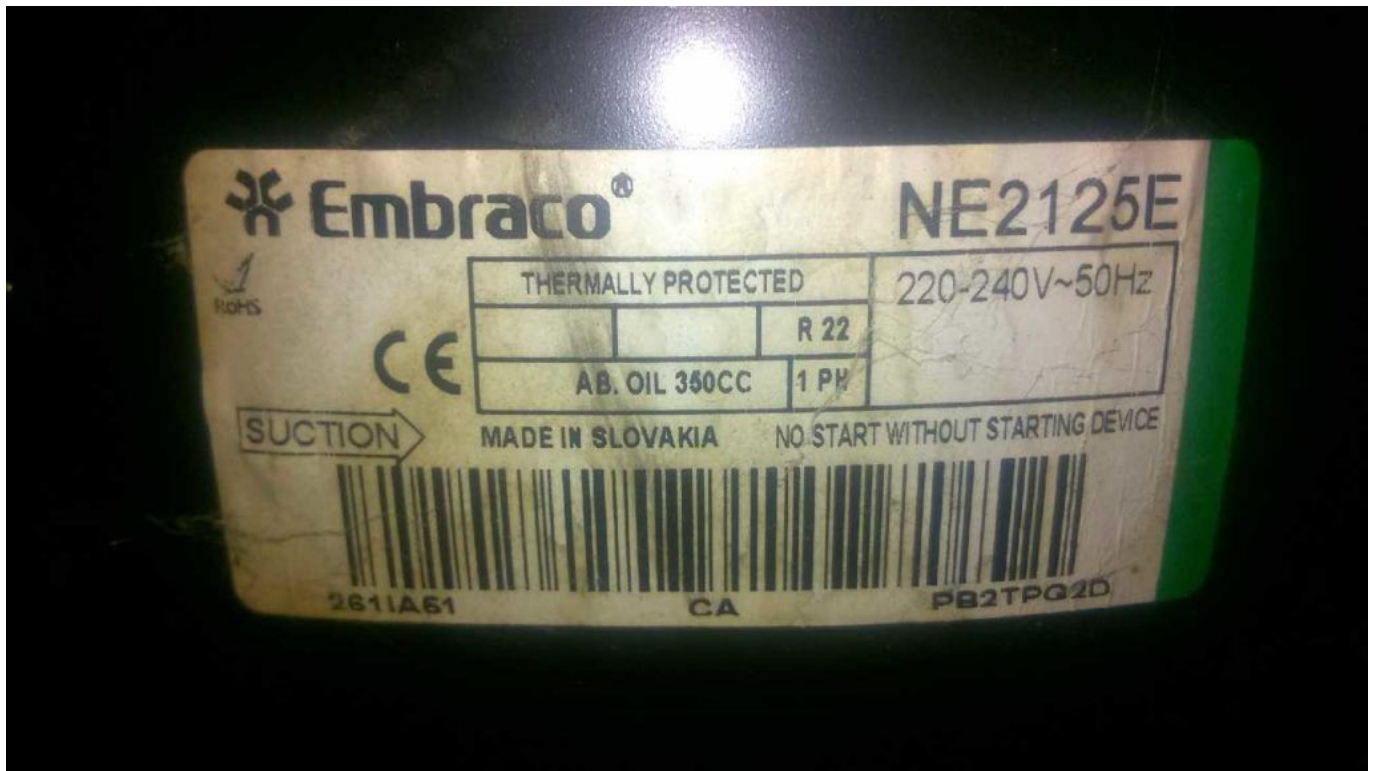
capacity measured for condensation temperature of: 45 ° C, Measurement conditions: ASHRAE

Unfortunately the compressor is no longer available.

If you would like an offer for an identical alternative, please email us or give us a short call, we will prepare an offer for you.Cooling capacity (W) at To

– 10 ° C – 15 ° C – 20 ° C – 25 ° C – 30 ° C

651 517 401 304 226



Private Picture Copyright : WWW.MBSM.PRO

R22 - LBP Applications

COMPRESSOR	FREQUENCY	DIMENSION	
		(from -30°C to -5°C evap. temp.)	-
NE2125E	50 Hz	0.91 mm I.D. x 3.2 m	-
	60 Hz	0.91 mm I.D. x 2.85 m	-
NE2134E	50 Hz	0.91 mm I.D. x 2.8 m	-
	60 Hz	0.91 mm I.D. x 2.5 m	-
T2140E	50 Hz	0.91 mm I.D. x 2.6 m	-
	60 Hz	0.91 mm I.D. x 2.3 m	-
T2155E	50 Hz	1.20 mm I.D. x 3.9 m	-
	60 Hz	1.20 mm I.D. x 3.5 m	-
T2168E	50 Hz	1.20 mm I.D. x 3.3 m	-
	60 Hz	1.20 mm I.D. x 2.8 m	-
NJ2178E	50 Hz	1.20 mm I.D. x 3.0 m	-

PictureS Mbsm Dot Pro : www.mbsm.pro

Private Picture Copyright : WWW.MBSM.PRO



Private Picture Copyright : WWW.MBSM.PRO



Private Picture Copyright : WWW.MBSM.PRO



Private Picture Copyright : WWW.MBSM.PRO



Private Picture Copyright : WWW.MBSM.PRO









Private Picture Copyright: WWW.MBSM.PRO

Mbsm_dot_pro_private_PDF_ne2125e-Embraco_VerdichterTélécharger

Shipping Class	Default
Scope Of Application	LBP
Delivery Time	2-3 Weeks
Stock Availability	In Stock
Type	Reciprocating Piston
Condensation Temperature	45 ° C
Manufacturer	Aspera
Manufacturer No.	NE2125E
Power In Hp	1/4 +
Starting Torque	HST
Stroke Volume In Cm3	8.78
Measurement Conditions	Ashrae
Refrigerant	R22
Oil Type	IS046
Series	NE
Condensing Units Compressors	Compressor

Tension	220-240V
Weight In Kg	10.4

Compressor, ACC, Cubigel, GL60AN, R134a, 220-240V, HMBP, 1/6HP

Category: Non classé

written by www.mbsm.pro | 21 March 2021

Type: Hermetic piston compressors **Producer:** ACC **Series:** HMBP

Model: GL60AN

General data

Refrigerant:	R134a
Discharge element:	C
Cooling:	S
Maximum ambient temperature [°C]:	50

Compressor's data

Cylinder capacity [cm ³]:	6
Displacement [m ³ /h]:	1
Weight [kg]:	9,9
Oil charge [cm ³]:	345
Oil type:	ISO VG 19 ESTER

Engine's data

Engine type:	RSIR
Power [KM]:	1/6
Starting element:	LST
Power supply:	220V 50Hz
Voltage range:	170-264
Locked rotor current [A]:	14,6
Running winding resistance (25°C) [Ω]:	9,33
Starting winding resistance (25°C) [Ω]:	10,81

Electrical data

Relays:	3003
Shielding element:	MRA38085, T0515, AF11BJ
Starting capacitor volume [μF]:	

Connections

	milimeters	inches
Suction tube:	6,5	
Service tube:	6,5	
Discharge tube:	4,9	



Private Picture Copyright : WWW.MBSM.PRO

Mbsm_dot_pro_private_PDF_GL60ANTélécharger

Copeland, Piston Type, Maneurop, Scroll type, Compressor

Category: compressor

written by www.mbsm.pro | 21 March 2021

Copeland, Piston Type, Maneurop, Scroll type, Compressor

Copeland - Piston Type



CRFD-0250TFD	2.5HP	220	30
CRFD-02750TFD	<3HP	220	30
CRFD-02750TFD	<3HP	380	30
CRFD-0300TFD	3HP	220	30
CRFD-0300TFD	3HP	380	30
CRFD-0400TFD	4HP	380	30
CRFD-0450TFD	4.5HP	380	30
CRFD-0500TFD	5HP	380	30

Copeland - Scroll Type



ZR22KC	2HP	220	16
ZR28KC	2.5HP	220	16
ZR34K1	3HP	220	16
ZR34K3	3HP	380	16
ZR36K1	>3HP	220	16
ZR36K3	>3HP	380	16
ZR47K3	4HP	380	16
ZR57K3	5HP	380	16
ZR61K3	>5HP	380	16
ZR72K3	6HP	380	16
ZR81K3	7HP	380	16
ZR94K3	8HP	380	16
ZR125K3	10HP	380	12
ZR144K3	12HP	380	12

Copeland - Piston type



QR90K1	7.5HP	380	4
QR12M1	10HP	380	4
QR15M1	12HP	380	4

Maneurop - Piston Type



MT28	7378BTU	220	8
MT36	9272BTU	380	8
MT40	10475BTU	380	8
MT50	12324BTU	380	8
MT64	15820BTU	380	8
MT80	19534BTU	380	8
MT100	23403BTU	380	4
MT125	30429BTU	380	4
MT160	38273BTU	380	4

Bristol - Piston type



H2NG104FRDF	8HP	380	8
H2NG124FRDF	10HP	380	8
H25G144DBEE	10HP	380	8
H2NG184FRDF	15HP	380	4
H2NG204FRDF	17HP	380	4
H2NG244FRDF	20HP	380	4
H2NG294FRDF	25HP	380	4
H24B25QDBEA	2HP	380	20
H24B28QDBEA	2.5HP	380	20
H24B31QDBEA	3HP	380	20
H24A62QDBEA	5HP	380	20

Compressor, R0HS, 1/3HP, R134A, Tecumseh, CAE4448Y, HBP, 208V/50HZ 230V/60HZ

Category: compressor

written by www.mbsm.pro | 21 March 2021



Private Picture Copyright: WWW.MBSM.PRO

Basic Info.

Model NO.

CAE4448Y

Refrigerant Type

Ammonia

Refrigerant

R134A

Voltage

208V/50Hz 230V/60Hz

Horsepower

1/3HP

Capacity(W)

519W
Input Power(Kw)
400W
Oil Charge (Cm3)
450
Net Weight(Kg)
12kg
Cop(W/W)
1.64
Trademark
tecumseh
Transport Package
Wooden Box
Specification
208V/50HZ 230V/60HZ
Origin
France
HS Code
8414309010

**1/3HP HBP Original Made in France R134A Tecumseh Compressor CAE4448Y
Refrigerator Compressor For Refrigerator/Showcase/Cold Room**

Product Description

Model: CAE4448Y

Brand : Tecumseh

Type: hermetic

Refrigerant: R134A

Voltage: 208V/50HZ 230V/60HZ

Cooling capacity: 519W

Input Power Watts: 400 W

Power: 1/3 HP

Description rapide

Condition:	Nouveau	Type:	Piston
Configuration:	Stationnaire	Source d'énergie:	Alimentation AC
Modèle de lubrifica...	Lubrifié	Muet:	Oui
Point d'origine:	Guangdong, China	Marque nom:	tecumseh
Numéro de Type:	CAE4448Y	Tension:	208 ~ 220V/1PH/50HZ
Dimension (L*W*H):	1 unité	Poids:	20kg
Certification:	ROHS	Garantie:	1 année
Service après-vente...	Aucun service d'outre-mer fourni	Gaz:	R134a
Chevaux:	1/3HP		

Compressors	Displacement CC	Motor	Cooling capacity (Watt) EN12900 condensing T° +45°C , subcooling 0K, Return Gas 20°C							EN12900 evaporating T° -10°C		Weight Kg
			evaporating T°							Power input(Watt)	COP (W/W)	
			-15	-10	-5	0	5	10	15			
AE4425Y	6,69	CSIR	266	342	424	519	633	770	938	199	1,72	9,1
AEZ4425Y	7,6	CSIR	239	320	414	522	641	771	912	205	1,56	9,7
											9%	
AE4430Y	8,02	CSIR	254	382	488	613	760	930	1127	237	1,61	9,4
AEZ4430Y	8,8	CSIR	316	404	512	639	784	946	1122	258	1,57	10,2
											3%	
AE4440Y	10,33	CSIR	399	508	637	790	968	1176	1417	302	1,68	9,6
CAE4440Y	12	CSIR	399	519	666	837	1033	1250	1489	342	1,52	10,8
											10%	
AE4450Y	13,24	CSIR	526	672	843	1042	1273	1540	1847	370	1,82	10,5
CAE4448Y	14,2	CSIR	519	654	822	1023	1253	1512	1797	400	1,64	11,9
											10%	
AE4456Y	14,51	CSIR	579	737	921	1133	1380	1664	1990	424	1,74	11
CAE4456Y	16	CSIR	590	744	933	1156	1411	1695	2006	486	1,53	12,5
											12%	
AE4460Y	15,09	CSR	597	766	958	1181	1437	1732	2070	409	1,87	11,3

Private Picture Copyright : WWW.MBSM.PRO

Basic Info.

Model NO.	CAE4448Y
Refrigerant	R134A
Horsepower	1/3HP
Input Power(Kw)	400W
Net Weight(Kg)	12kg
Trademark	tecumseh
Specification	208V/50HZ 230V/60HZ
HS Code	8414309010

Refrigerant Type	Ammonia
Voltage	208V/50Hz 230V/60Hz
Capacity(W)	519W
Oil Charge (Cm3)	450
Cop(W/W)	1.64
Transport Package	Wooden Box
Origin	France

Private Picture Copyright : WWW.MBSM.PRO

Mbsm_dot_pro_private_PDF_cae4448yTélécharger

Mbsm.pro, Donper, Hermetic, Compressor , R600a, Lj126Cy, lu126cy1, 1/3 Hp, R600a

Category: compressor

written by www.mbsm.pro | 21 March 2021



Private Picture Copyright : WWW.MBSM.PRO

Mbsm.pro, Donper, Hermetic, Compressor , R600a, Lj126Cy, lu126cy1, 1/3 Hp, R600a

Panasonic, refrigerator, compressor, SB48C95GAW5, 110w, White-Westinghouse refrigerator, 220v, 50 Hz, 85L, R134A/80G, 1/6 Hp

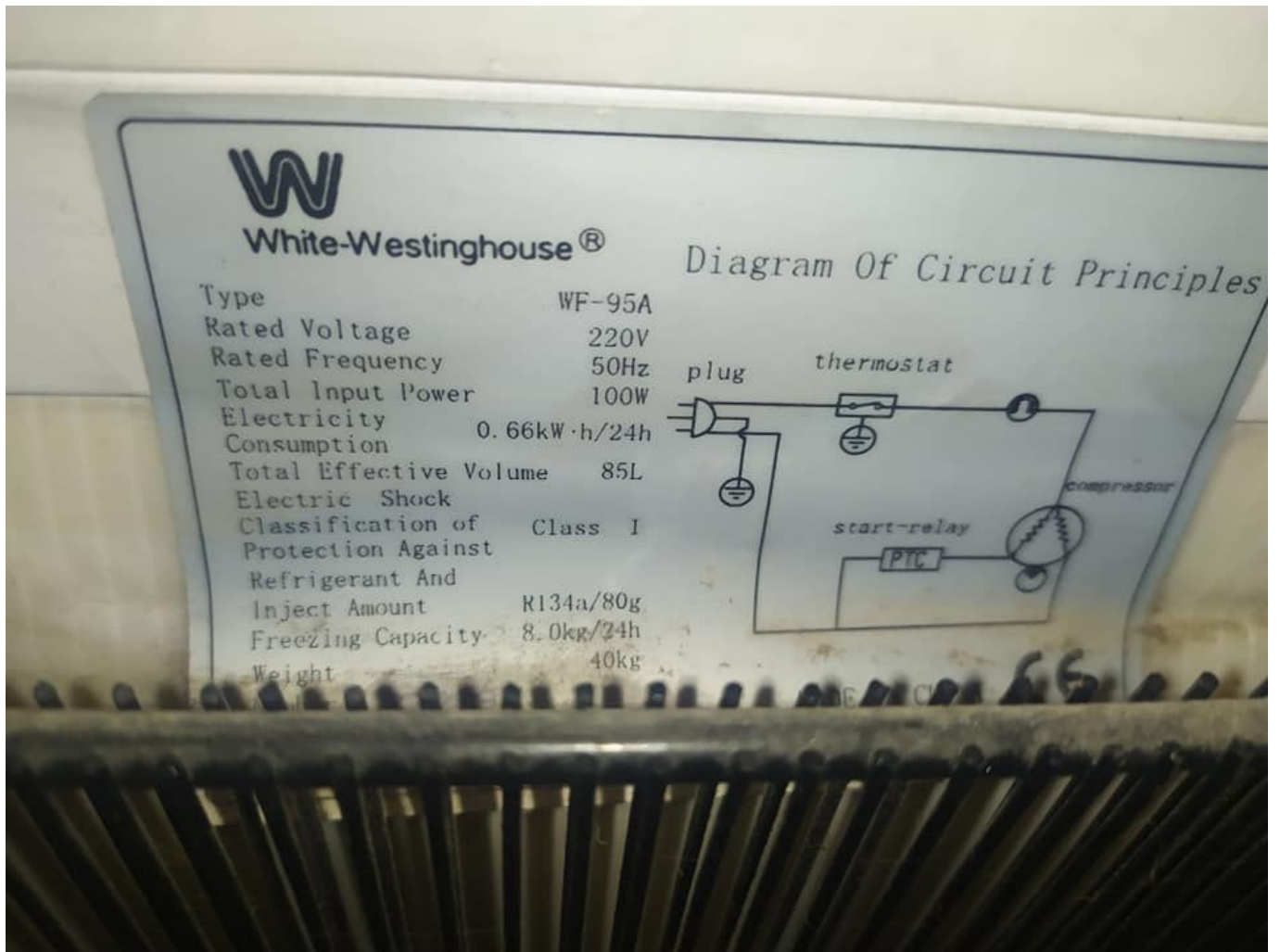
Category: compressor

written by www.mbsm.pro | 21 March 2021

Specification

Item	Performance characteristics
Refrigerant	R134a
Displacement (cm ³)	4.8
Voltage (V)	220/240
Frequency (Hz)	50
Motor Type	RSIR
Capacity@ASHRAE	110
COP@ASHRAE	1.03/0.99
Capacity@CECOMAF	—
COP@CECOMAF	—





Private Picture Copyright : WWW.MBSM.PRO

Mbsm_dot_pro_private_PDF_SB48C95GAW5Télécharger

Maintenance et réparation MG rouleuse de pate cc900

Category: Mécanique

written by www.mbsm.pro | 21 March 2021









Private Picture Copyright : WWW.MBSM.PRO



Private Picture Copyright : WWW.MBSM.PRO



REDMI NOTE 9
AWLED MILED MAHDIA

2021/2/24 11:27





Private Picture Copyright: WWW.MBSM.PRO



Private Picture Copyright: WWW.MBSM.PRO



Private Picture Copyright: WWW.MBSM.PRO



REDMI NOTE 9
AWLED MILED MAHDIA

2021/2/23 12:14

Private Picture Copyright : WWW.MBSM.PRO



REDMI NOTE 9
AWLED MILED MAHDIA

2021/2/23 12:14

Private Picture Copyright : WWW.MBSM.PRO



REDMI NOTE 9
AWLED MILED MAHDIA

2021/2/23 12:14

Private Picture Copyright : WWW.MBSM.PRO



REDMI NOTE 9
AWLED MILED MAHDIA

2021/2/23 12:15

Private Picture Copyright : WWW.MBSM.PRO



REDMI NOTE 9
AWLED MILED MAHDIA

2021/2/23 12:15

Private Picture Copyright : WWW.MBSM.PRO



REDMI NOTE 9
AWLED MILED MAHDIA

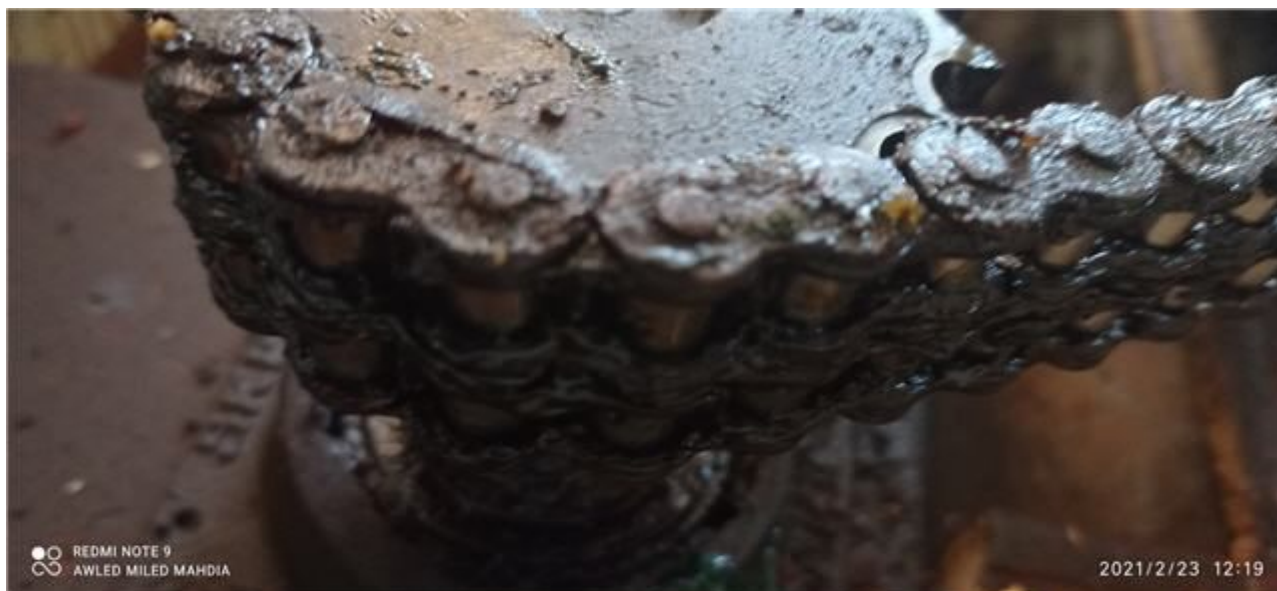
2021/2/23 12:18

Private Picture Copyright : WWW.MBSM.PRO



● ○ REDMI NOTE 9
∞ AWLED MILED MAHDIA

2021/2/23 12:19



Private Picture Copyright : WWW.MBSM.PRO



Private Picture Copyright : WWW.MBSM.PRO

Moteur, bolt f180E, motorisé,
télécommandé, Moteur central, Porte
Rideau 180Kg, installation, Réglage,
carte de commande Somefy Double
commande

Category: electricity

written by www.mbsm.pro | 21 March 2021



Private Picture Copyright : WWW.MBSM.PRO



Private Picture Copyright : WWW.MBSM.PRO



REDMI NOTE 9
AWLED MILED MAHDIA

2021/2/20 10:41



REDMI NOTE 9
AWLED MILED MAHDIA

2021/2/20 11:36



● ○ REDMI NOTE 9
AWLED MILED MAHDIA

2021/2/20 11:37

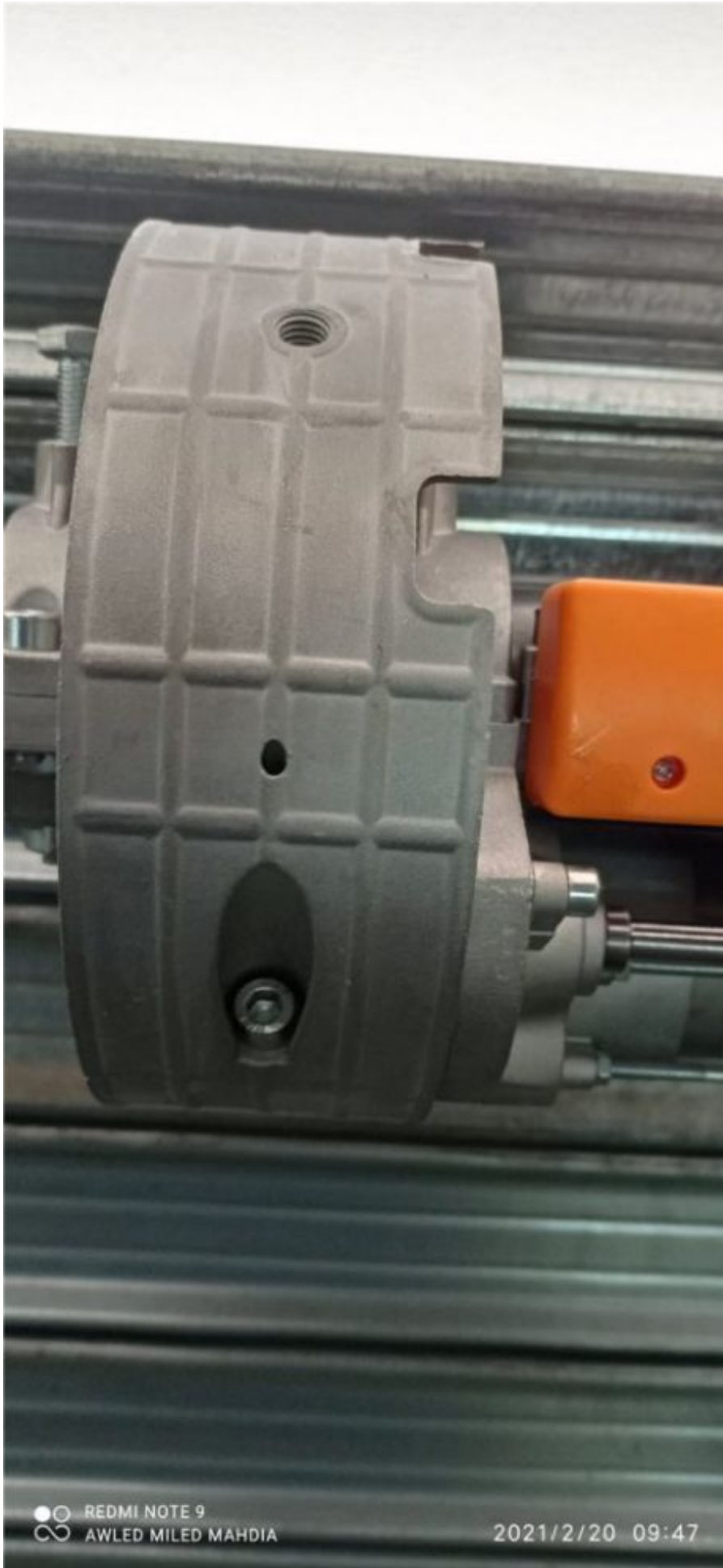


Private Picture Copyright: WWW.MBSM.PRO



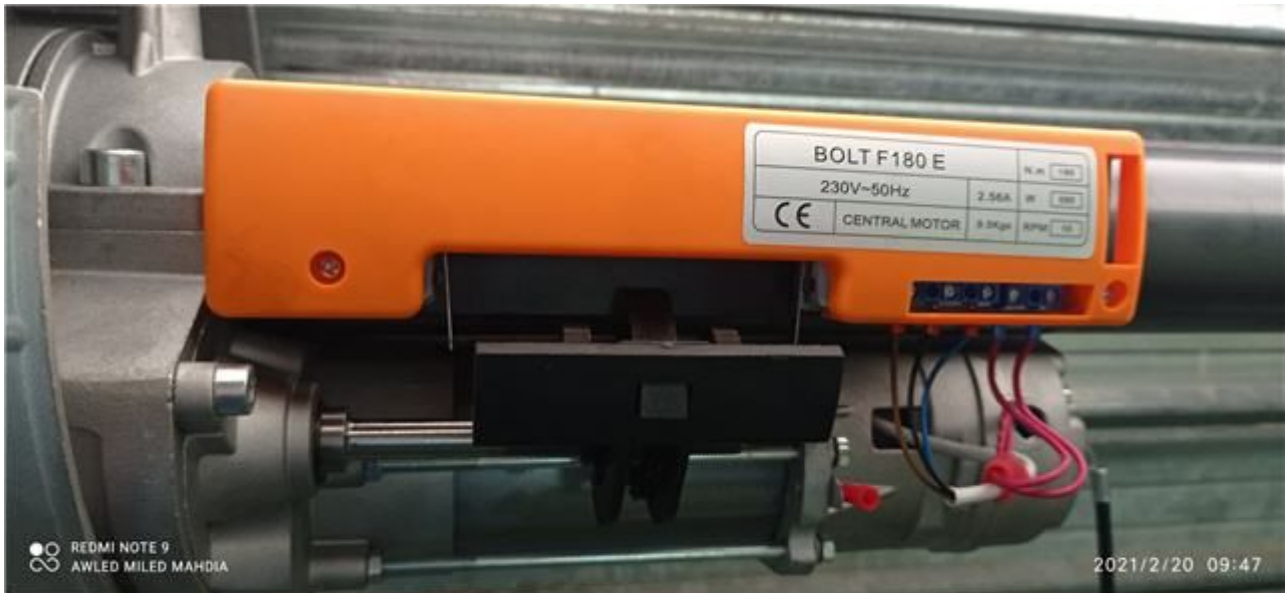
● ○ REDMI NOTE 9
∞ AWLED MILED MAHDIA

2021/2/20 09:45



● ○ REDMI NOTE 9
∞ AWLED MILED MAHDIA

2021/2/20 09:47



Private Picture Copyright: WWW.MBSM.PRO



Private Picture Copyright: WWW.MBSM.PRO



Private Picture Copyright: WWW.MBSM.PRO



Description rapide

Garantie:

Plus de 5 Ans

Service après – vente:

Support technique en ligne

Solution de projet Capacité:

Conception graphique

Application:

Entrepôt

Style de conception:

Traditionnel

Point d'origine:

China

Marque nom:

Simple

Numéro de Type:

BOLT F180E

Type:

door motor, Door & Window Rollers

usage:

rolling door

Model:

automatic gate roller

Rated torque:
120N.m

R.P.M:
10

Limit switch:
6m

Cut out temperture:
4min

Power:
670w

Consumption:
2.9A

Weight:
8~9kg

Capacité d'approvisionnement

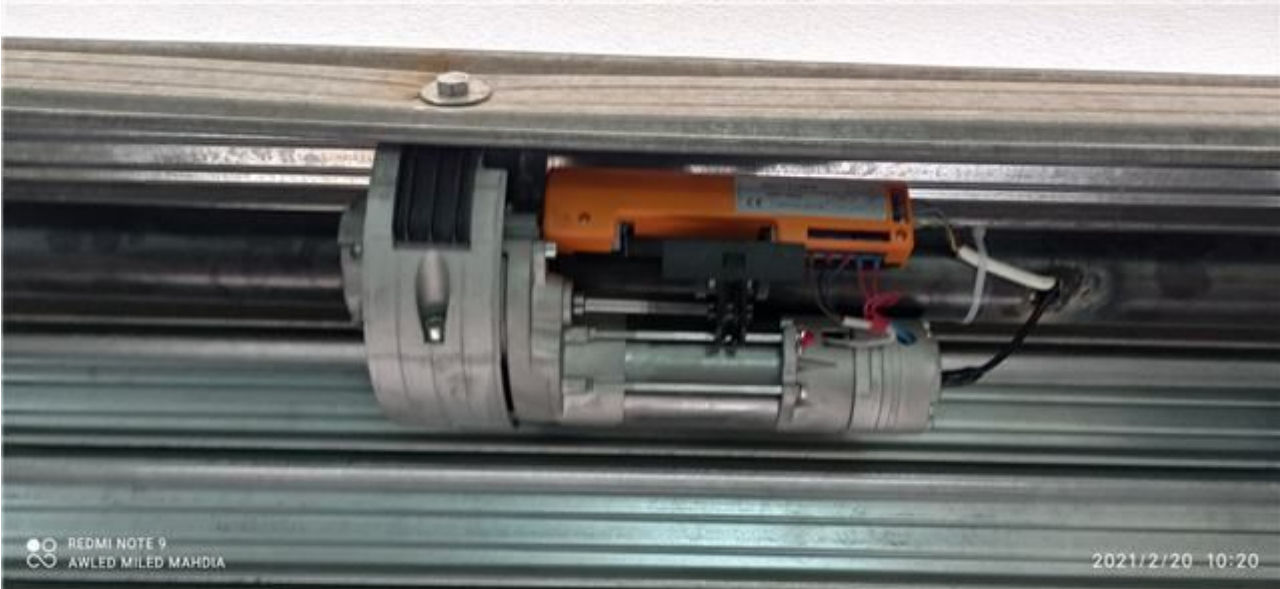
Capacité d'approvisionnement:
8000 Set/Sets per Month we will delivery roller shutter gear within 25days

Emballage et livraison

Détails d'emballage
Détails d'emballage: carton d'exportation navigable et palette

Port
Ningbo/Shanghai

Délai : :
Quantité(Sets) 1 - 12 - 200 >200
Durée estimée (jours) 7 15 À négociier



Private Picture Copyright: WWW.MBSM.PRO



Private Picture Copyright: WWW.MBSM.PRO



Private Picture Copyright: WWW.MBSM.PRO