

Compressor Technical Data

Model NO: R134a LBP
Energy Saving Series

110-120V 60Hz

Toeflex Ltd

Main Technical Data

Model	PW3.5VK	PW4.0VK	PW4.5VK
Application	LBP		
Running Voltage (V)	95~127V AC 60Hz		
Capacity (W)	92	116	135
Motor Input (W)	80	98	108
Current (A)	1.40	1.60	1.70
COP (W/W)	1.15	1.18	1.20
Weight (Kg)	7.2	7.2	7.2

Test Condition

Evaporating Temp: $-23.3^{\circ}\text{C} \pm 0.2^{\circ}\text{C}$ Condensing Temp: $54.4^{\circ}\text{C} \pm 0.3^{\circ}\text{C}$ Super Cooling Temp: $32.2^{\circ}\text{C} \pm 0.3^{\circ}\text{C}$ Suction Temp: $32.2^{\circ}\text{C} \pm 3^{\circ}\text{C}$ Ambient Temp: $32.2^{\circ}\text{C} \pm 1^{\circ}\text{C}$

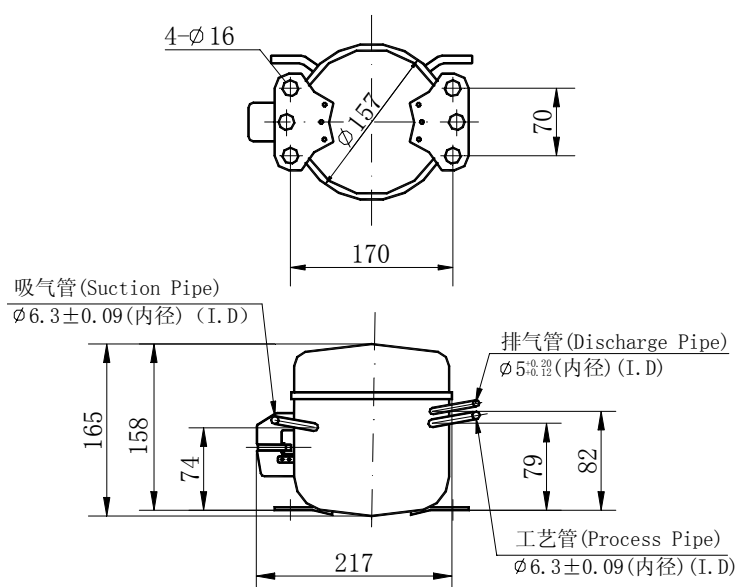
Power Supply: 110V AC 60Hz

Applied Condition

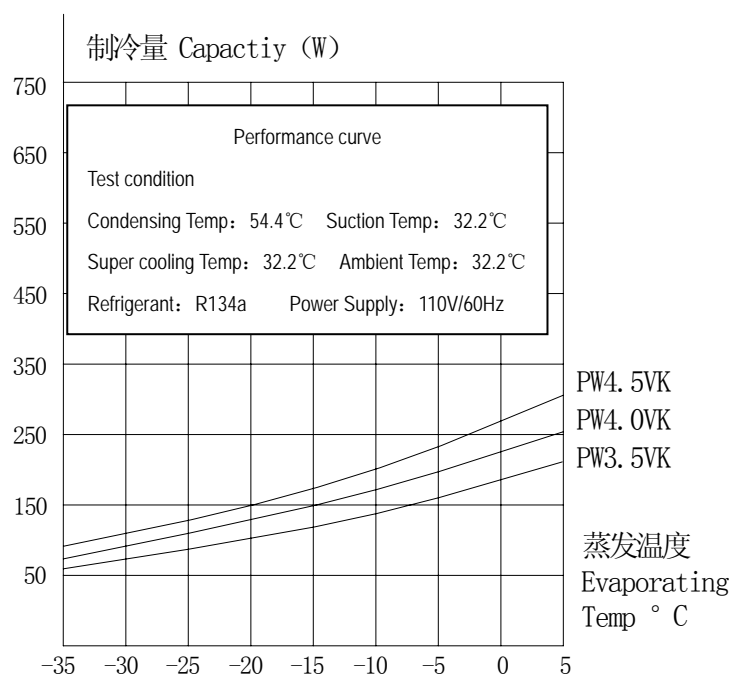
Evaporating Temp Range: $-35^{\circ}\text{C} \sim -15^{\circ}\text{C}$

Refrigerant: R134a

Compressor Cooling: Static Cooling

Ambient Temp: $10^{\circ}\text{C} \sim 38^{\circ}\text{C}$ 

(Overall Dimensions)



TECHNICAL DATA SUBJECTED TO CONSTANT TECHNOLOGY IMPROVEMENT WITHOUT ADVANCED NOTICE.