

Compressor Technical Data

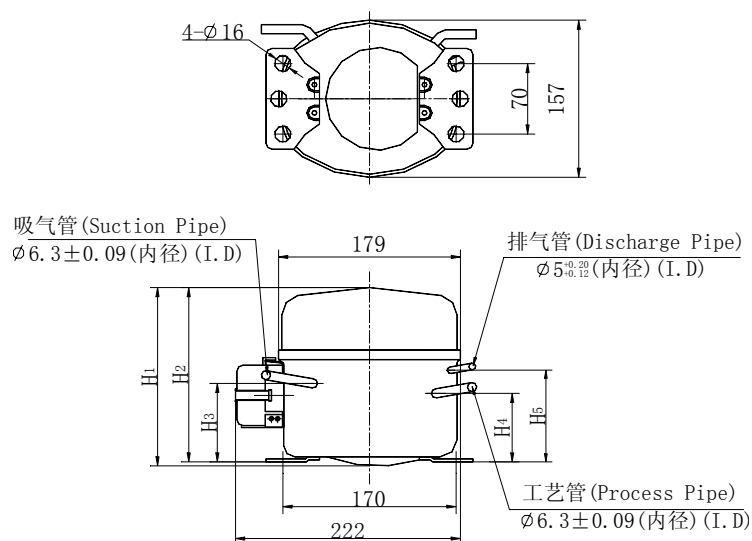
Model NO: R134a HBP

220-240V/50Hz

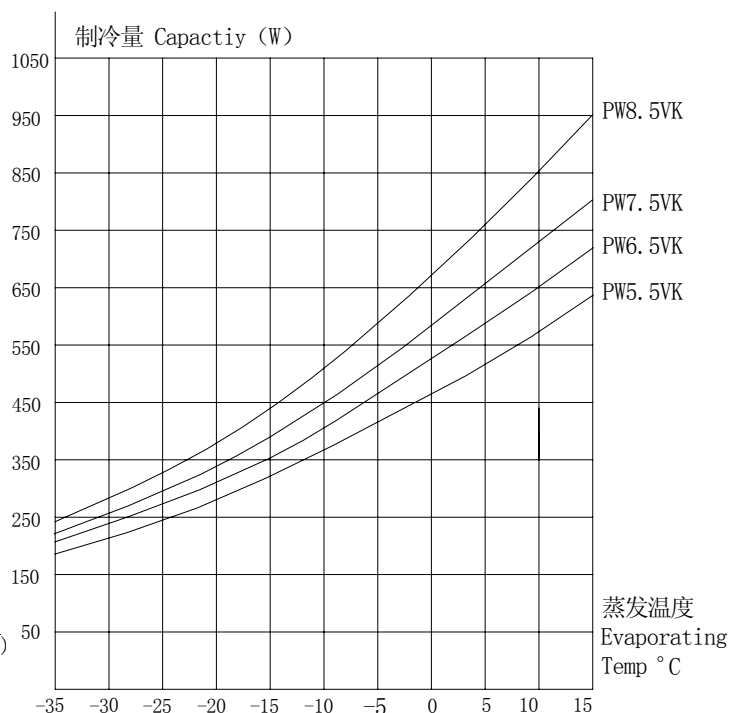
Toeflex Ltd

Main Technical Data

Model	PW5.5VK	PW6.5VK	PW7.5VK	PW8.5VK
Application	HBP			
Running Voltage (V)	187~242V AC 50Hz			
Capacity (W)	540	615	690	800
Motor Input (W)	284	308	328	363
Current (A)	1.6	1.7	1.9	2.1
COP (W/W)	1.9	2.0	2.1	2.2
Weight (Kg)	8.6	9.5	9.8	10.5
<div> Test Condition Evaporating Temp: $7.2^{\circ}\text{C} \pm 0.2^{\circ}\text{C}$ Condensing Temp: $54.4^{\circ}\text{C} \pm 0.3^{\circ}\text{C}$ Super Cooling Temp: $46.1^{\circ}\text{C} \pm 0.3^{\circ}\text{C}$ Suction Temp: $35^{\circ}\text{C} \pm 3^{\circ}\text{C}$ Ambient Temp: $35^{\circ}\text{C} \pm 1^{\circ}\text{C}$ Power Supply: 220V AC 50Hz </div> <div> Applied Condition Evaporating Temp Range: $-20^{\circ}\text{C} \sim 15^{\circ}\text{C}$ Refrigerant: R134a Compressor Cooling: Fan Cooling Ambient Temp: $10^{\circ}\text{C} \sim 38^{\circ}\text{C}$ </div>				



压缩机外型及安装尺寸
 (Overall Dimensions)



Model	H ₁	H ₂	H ₃	H ₄	H ₅	Model	H ₁	H ₂	H ₃	H ₄	H ₅
PW5.5VK	175	171	77	73	92	PW7.5VK	180	176	82	73	92
PW6.5VK						PW8.5VK					

TECHNICAL DATA SUBJECTED TO CONSTANT TECHNOLOGY IMPROVEMENT WITHOUT ADVANCED NOTICE.