

Compressor Technical Data

Model NO: R134a LBP

220-240V/50Hz

Toeflex Ltd

Main Technical Data

Model	PW3.5VK	PW4.0VK	PW4.5VK
Application	LBP		
Running Voltage (V)	187~242V AC 50Hz		
Capacity (W)	95	112	126
Motor Input (W)	95	102	110
Current (A)	0.60	0.70	0.85
COP (W/W)	1.0	1.1	1.15
Weight (Kg)	7.2	7.2	7.2

Test Condition

Evaporating Temp: $-23.3^{\circ}\text{C} \pm 0.2^{\circ}\text{C}$ Condensing Temp: $54.4^{\circ}\text{C} \pm 0.3^{\circ}\text{C}$ Super Cooling Temp: $32.2^{\circ}\text{C} \pm 0.3^{\circ}\text{C}$ Suction Temp: $32.2^{\circ}\text{C} \pm 3^{\circ}\text{C}$ Ambient Temp: $32.2^{\circ}\text{C} \pm 1^{\circ}\text{C}$

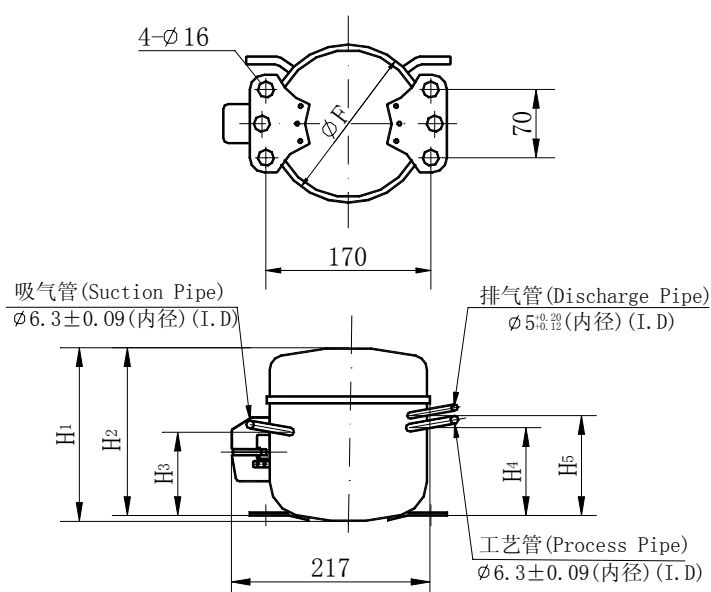
Power Supply: 220V AC 50Hz

Applied Condition

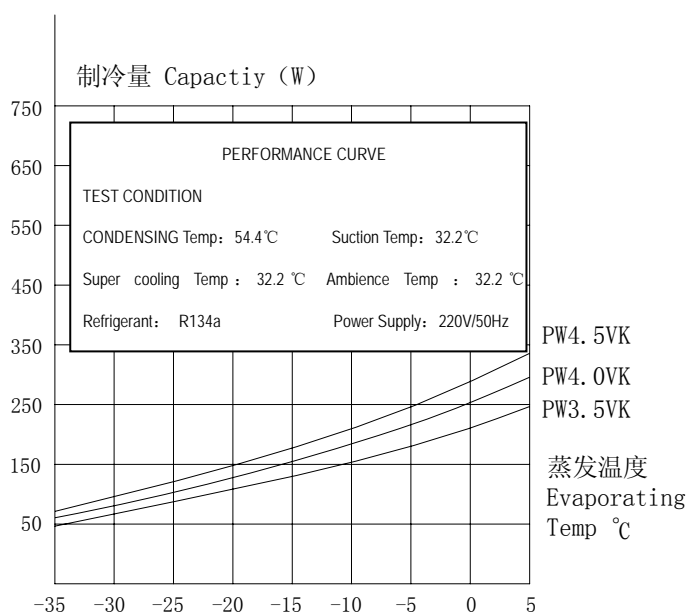
Evaporating Temp Range: $-35^{\circ}\text{C} \sim -15^{\circ}\text{C}$

Refrigerant: R134a

Compressor Cooling: Static Cooling

Ambient Temp: $10^{\circ}\text{C} \sim 38^{\circ}\text{C}$ 

(Overall Dimensions)



(Characteristic Curve)

Model	H_1	H_2	H_3	H_4	H_5	F
PW3.5VK	165	158	74	79	82	157
PW4.0VK						
PW4.5VK						

TECHNICAL DATA SUBJECTED TO CONSTANT TECHNOLOGY IMPROVEMENT WITHOUT ADVANCED NOTICE.

(Main Technical Data)

Model	PW5.5VK	PW6.5VK	PW7.5VK	PW8.5VK
Application	LBP			
Running Voltage (V)	187~242V AC 50Hz			
Capacity (W)	148	168	190	215
Motor Input (W)	123	137	150	165
Current (A)	0.9	1.10	1.20	1.30
COP (W/W)	1.20	1.23	1.26	1.30
Weight (Kg)	8.6	8.6	9.5	9.9

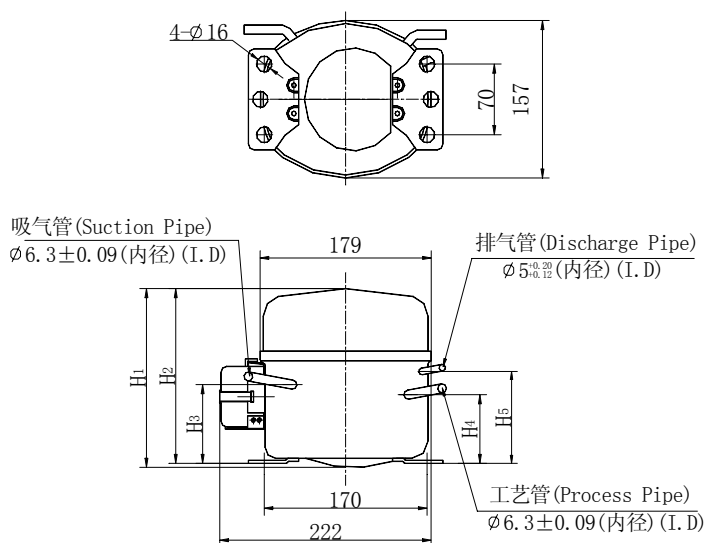
Test ConditionEvaporating Temp: $-23.3^{\circ}\text{C} \pm 0.2^{\circ}\text{C}$ Condensing Temp: $54.4^{\circ}\text{C} \pm 0.3^{\circ}\text{C}$ Super Cooling Temp: $32.2^{\circ}\text{C} \pm 0.3^{\circ}\text{C}$ Suction Temp: $32.2^{\circ}\text{C} \pm 3^{\circ}\text{C}$ Ambient Temp: $32.2^{\circ}\text{C} \pm 1^{\circ}\text{C}$

Power Supply: 220V AC 50Hz

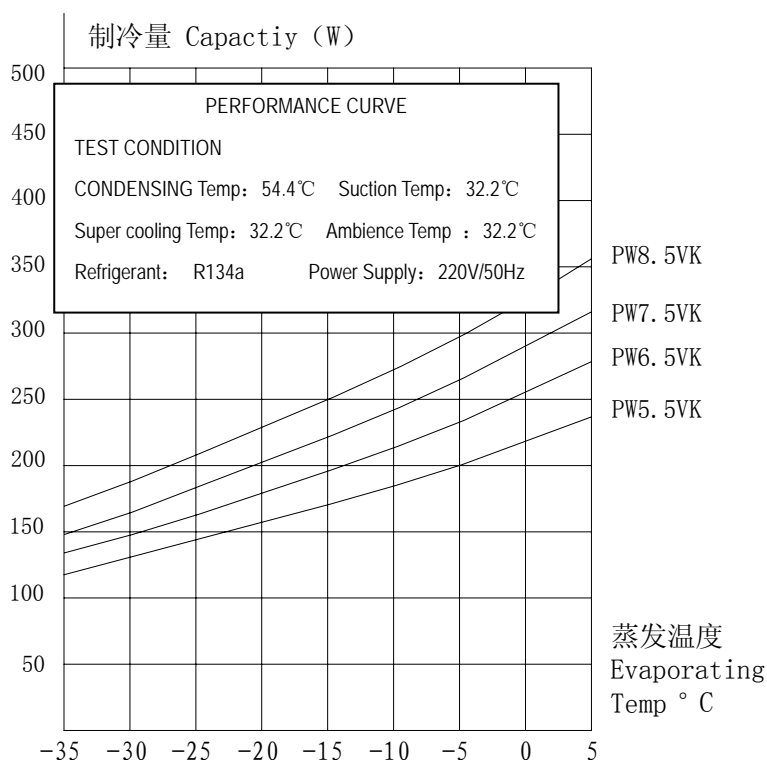
Applied ConditionEvaporating Temp Range: $-35^{\circ}\text{C} \sim -15^{\circ}\text{C}$

Refrigerant: R134a

Compressor Cooling: Static or Fan cooling

Ambient Temp: $10^{\circ}\text{C} \sim 38^{\circ}\text{C}$ 

(Overall Dimensions)



Model	H ₁	H ₂	H ₃	H ₄	H ₅	Model	H ₁	H ₂	H ₃	H ₄	H ₅
PW5.5VK	175	171	77	73	92	PW7.5VK	175	171	77	73	92
PW6.5VK						PW8.5VK	185	181	87	78	97

TECHNICAL DATA SUBJECTED TO CONSTANT TECHNOLOGY IMPROVEMENT WITHOUT ADVANCED NOTICE.

(Main Technical Data)

Model	DFV95	DFV105	DFV115	DFV125
Application	LBP			
Running Voltage (V)	187~242V AC 50Hz			
Capacity (W)	270	310	350	385
Motor Input (W)	186	218	246	271
Current (A)	1.55	1.80	2.10	2.50
COP (W/W)	1.45	1.42	1.42	1.42
Cooling Type	Nature	Nature	Fan	Fan
Weight (Kg)	8.5	8.8	9.2	9.6

Test Condition

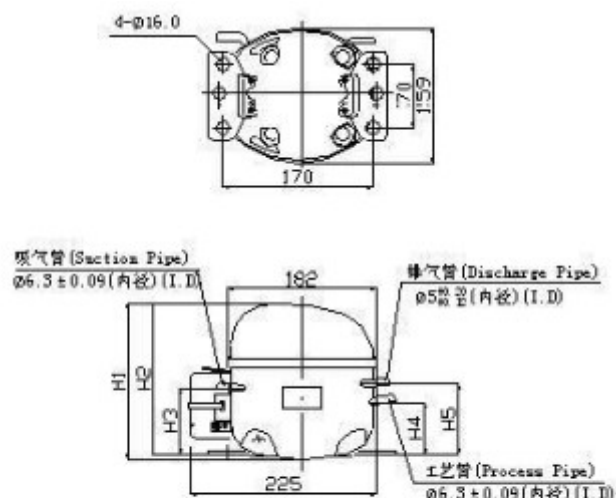
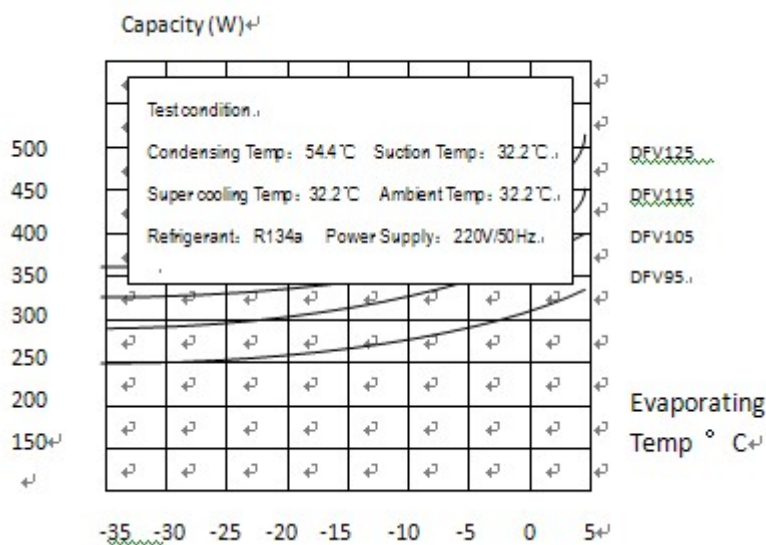
Evaporating Temp: $-23.3^{\circ}\text{C} \pm 0.2^{\circ}\text{C}$ Condensing Temp: $54.4^{\circ}\text{C} \pm 0.3^{\circ}\text{C}$ Super Cooling Temp: $32.2^{\circ}\text{C} \pm 0.3^{\circ}\text{C}$ Suction Temp: $32.2^{\circ}\text{C} \pm 3^{\circ}\text{C}$ Ambient Temp: $32.2^{\circ}\text{C} \pm 1^{\circ}\text{C}$

Power Supply: 220V AC 50Hz

Applied Condition

Evaporating Temp Range: $-35^{\circ}\text{C} \sim -5^{\circ}\text{C}$

Refrigerant: R134a

Ambient Temp: $10^{\circ}\text{C} \sim 38^{\circ}\text{C}$ 
 压缩机外型及安装尺寸
 (Overall Dimensions)


Model	H1	H2	H3	H4	H5
DFV95	177	173	77	73	92
DFV105	182	178			
DFV115					
DFV125	187	183			

TECHNICAL DATA SUBJECTED TO CONSTANT TECHNOLOGY IMPROVEMENT.