

Compressor Technical Data

Model NO: R134a L/HBP

110-120V/60Hz

Toeflex Ltd

Main Technical Data

| | |
|---------------------|---|
| Model | PW3.0DV |
| Application | L/HBP |
| Running Voltage (V) | 95~127V AC 60Hz |
| Capacity (W) | 220 ⁽¹⁾ 62 ⁽²⁾ |
| Motor Input (W) | 113 ⁽¹⁾ 68 ⁽²⁾ |
| Current (A) | 1.7 ⁽¹⁾ 1.28 ⁽²⁾ |
| COP (W/W) | 1.95 ⁽¹⁾ 0.91 ⁽²⁾ |
| Weight (Kg) | 6.3 |

(1) Test Condition

Evaporating Temp: 7.2°C ± 0.2°C

Condensing Temp: 54.4°C ± 0.3°C

Super Cooling Temp: 46.1°C ± 0.3°C

Suction Temp: 35°C ± 3°C

Ambient Temp: 35°C ± 1°C

Power Supply: 110V AC 60Hz

Applied Condition

Evaporating Temp Range: -35°C ~ +15°C

Refrigerant: R134a

Compressor Cooling: Static Cooling

Ambient Temp: 10°C ~ 38°C

(2) Test Condition

Evaporating Temp: -23.3°C ± 0.2°C

Condensing Temp: 54.4°C ± 0.3°C

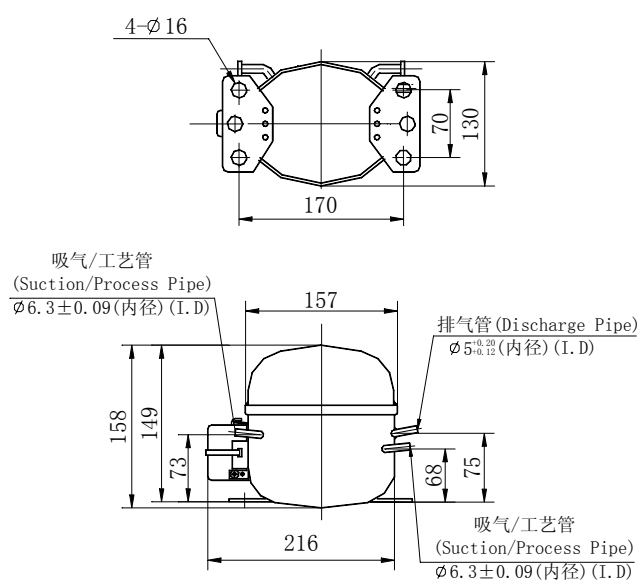
Super Cooling Temp: 32.2°C ± 0.3°C

Suction Temp: 32.2°C ± 3°C

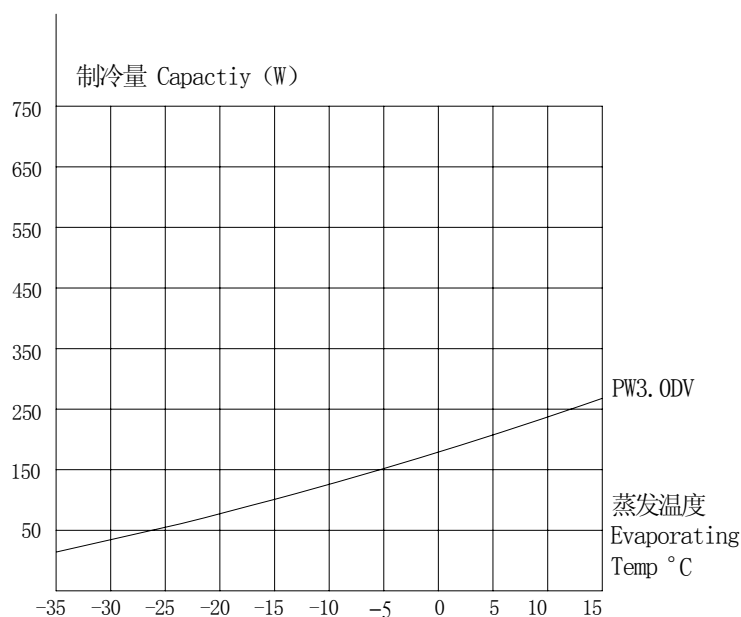
Ambient Temp: 32.2°C ± 1°C

Power Supply: 110V AC 60Hz

Note: HBP Test condition (1), LBP Test condition (2).



(Overall Dimensions)



TECHNICAL DATA SUBJECTED TO CONSTANT TECHNOLOGY IMPROVEMENT WITHOUT ADVANCED NOTICE.

Main Technical Data

| Model | PW4.0VK | PW4.5VK | PW5.5VK |
|---------------------|--|--|---------------------------------------|
| Application | L/HBP | | |
| Running Voltage (V) | 95~127V AC 60Hz | | |
| Capacity (W) | 310 ⁽¹⁾ 76 ⁽²⁾ | 375 ⁽¹⁾ 108 ⁽²⁾ | 450 ⁽¹⁾ 118 ⁽²⁾ |
| Motor Input (W) | 163 ⁽¹⁾ 78 ⁽²⁾ | 178 ⁽¹⁾ 102 ⁽²⁾ | 195 ⁽¹⁾ 107 ⁽²⁾ |
| Current (A) | 1.9 ⁽¹⁾ 1.3 ⁽²⁾ | 2.1 ⁽¹⁾ 1.35 ⁽²⁾ | 2.6 ⁽¹⁾ 1.7 ⁽²⁾ |
| COP (W/W) | 1.9 ⁽¹⁾ 0.97 ⁽²⁾ | 2.1 ⁽¹⁾ 1.06 ⁽²⁾ | 2.3 ⁽¹⁾ 1.1 ⁽²⁾ |
| Weight (Kg) | 7.2 | 7.2 | 8.1 |

(1) Test Condition

Evaporating Temp: 7.2°C ± 0.2°C
 Condensing Temp: 54.4°C ± 0.3°C
 Super Cooling Temp: 46.1°C ± 0.3°C
 Suction Temp: 35°C ± 3°C
 Ambient Temp: 35°C ± 1°C
 Power Supply: 110V AC 60Hz

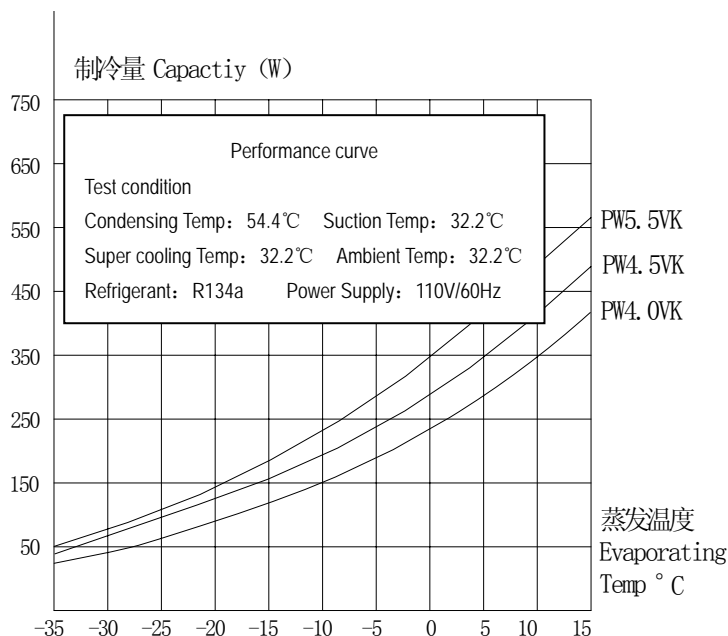
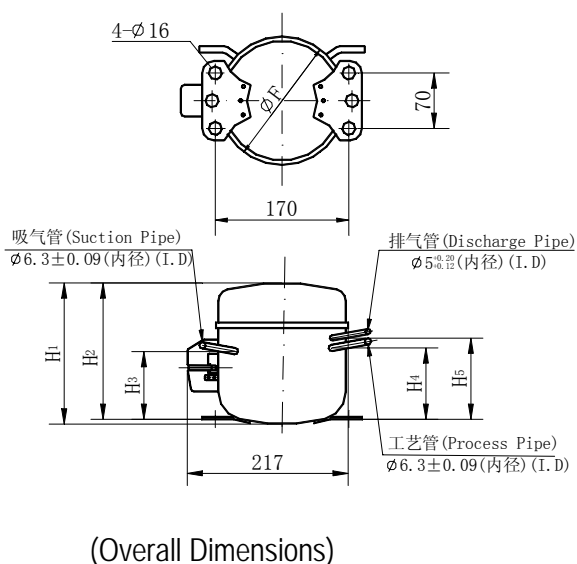
Applied Condition

Evaporating Temp Range: -35°C ~ 15°C
 Refrigerant: R134a
 Compressor Cooling: Static Cooling
 Ambient Temp: 10°C ~ 38°C

(2) Test Condition

Evaporating Temp: -23.3°C ± 0.2°C
 Condensing Temp: 54.4°C ± 0.3°C
 Super Cooling Temp: 32.2°C ± 0.3°C
 Suction Temp: 32.2°C ± 3°C
 Ambient Temp: 32.2°C ± 1°C
 Power Supply: 110V AC 60Hz

Note: HBP Test condition (1), LBP Test condition (2)。



| Model | H ₁ | H ₂ | H ₃ | H ₄ | H ₅ | F |
|---------|----------------|----------------|----------------|----------------|----------------|-----|
| PW4.0VK | 165 | 158 | 74 | 79 | 82 | 157 |
| PW4.5VK | | | | | | |
| PW5.5VK | 176 | 168 | 80 | 80 | 78 | 163 |

TECHNICAL DATA SUBJECTED TO CONSTANT TECHNOLOGY IMPROVEMENT WITHOUT ADVANCED NOTICE.