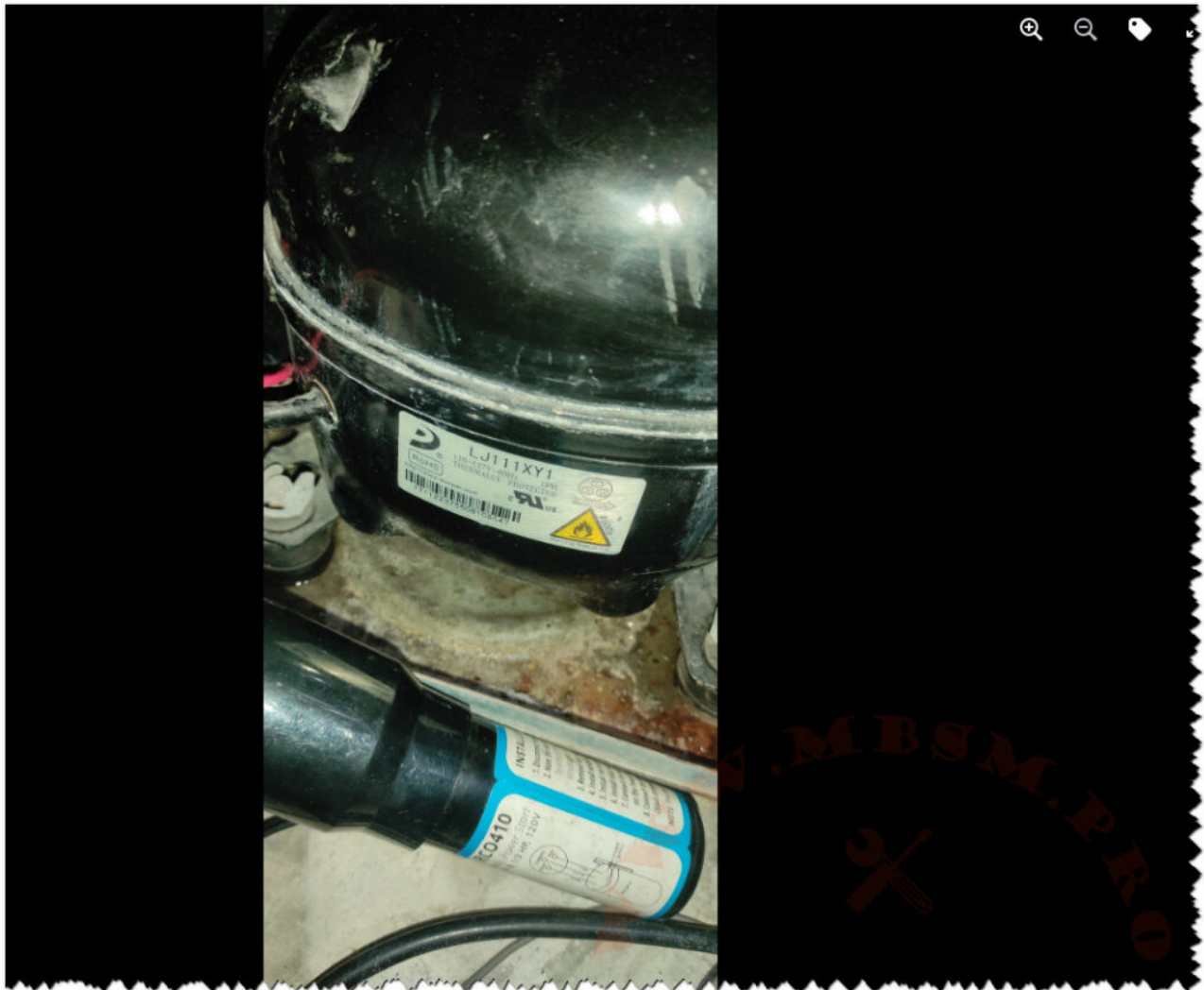


Mbsm.pro, Compresor, 1/4 hp, 11 cm3, r600a, Daewoo, Lj111xy1, 186 w, lbp

written by Lilianne | 10 February 2024



Mbsm.pro, Compresor, 1/4 hp, 11 cm3, r600a, Daewoo, Lj111xy1,
186 w, lbp

Mbsm.pro, Panasonic, Compressor, D Series, DD86C23GAX6, 1/3 hp, 300 w, lbp, r134a, 8.6 cm³

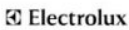


written by Lilianne | 10 February 2024



Mbsm.pro, Panasonic, Compressor, D Series, DD86C23GAX6, 1/3
hp, 300 w, lbp, r134a, 8.6 cm³

Mbsm.pro, Compressor, Panasonic, Gp21tb, Gp21fb, 5/8 hp, 415 kcal, 351 w (cap/cool), ELECTROLUX, HERMETIC, R134a, LBP, 220-240/1/50

written by Lilianne | 10 February 2024

   ELECTROLUX HERMETIC COMPRESSORS - R134a LBP VOLTAGE 220-240/1/50						
Code	Model	Nom. hp	Displacem. cc	Expansion	Ashrae -23,3C° kcal/h	Cecomaf -25C° W
CMP100AC	GD24AA	1/20	2,44	C	41	34
CMP101AC	GD30AA	1/12	3,08	C	62	52
CMP102AC	GD36AA	1/12	3,62	C	72	61
CMP103AC	GD40AA	1/10	4,03	C	82	70
CMP104AC	AS45AA	1/8	4,56	C/V	112	82
CMP105AC	AS60AA	1/6	5,99	C/V	154	114
CMP106AC	AS75AA	1/5	6,64	C/V	176	129
CMP107AC	AS80AA	1/5	7,39	C/V	198	145
CMP108AC	GL45AA	1/8	4,55	C	96	81
CMP109AC	GL50AA	1/7	5,12	C	107	91
CMP110AC	GL60AA	1/6	5,99	C	126	107
CMP111AC	GL70AA	1/5	6,65	C	142	121
CMP112AC	GL75AA	1/5	7,39	C	155	132
CMP113AC	GL80AA	1/5	8,10	C	170	144
CMP114AC	GL90AA	1/5	9,08	C	193	165
CMP115AC	GL99AA	1/4	9,93	C	205	175
CMP116AC	GP12FB	1/3	12,00	C/V	225	190
CMP117AC	GP14FB	3/8	14,00	C/V	270	228
CMP118AC	GP16FB	3/8	16,14	C/V	315	266
CMP119AC	GP18FB	3/7	18,40	C/V	345	291
CMP120AC	GP21FB	2/3	20,72	C/V	415	351
CMP121AC	GVY35AA	1/10	3,36	C/V	84	62
CMP122AC	GVY40AA	1/9	3,87	C/V	107	79
CMP123AC	GVY44AA	1/8	4,38	C/V	122	91
CMP124AC	GVY57AA	1/7	5,73	C/V	150	109
CMP125AC	GVY66AA	1/5	7,00	C/V	181	132
CMP126AC	GVY75AA	1/5	7,52	C/V	205	150
CMP127AC	GQY35AA	1/10	3,66	C/V	91	67
CMP128AC	GQY40AA	1/9	4,01	C/V	104	76
CMP129AC	GQY45AA	1/8	4,56	C/V	121	90

Mbsm.pro, Compressor, Panasonic, Gp21tp, 5/8 hp, 415 kcal, 351 w (cap/cool), ELECTROLUX, HERMETIC, COMPRESSORS, R134a, LBP, 220-240/1/50

Mbsm.pro, Compressor, EE 76613DJH, Panasonic, inverter, Blcd, 1/5 hp, from to 50 to 260 hz, lbp, r134a, EEI Series

written by Lilianne | 10 February 2024



Mbsm.pro, Compressor, EE 76613DJH, Panasonic, inverter, Blcd,
1/5 hp, from to 50 to 260 hz, lbp, r134a, EEI Series

Mbsm.pro, Refrigerator,

Compressor, SD137H-L1Z2, 1/10hp, lbp, r134a, 1ph, 220v/50hz

written by Lilianne | 10 February 2024



Mbsm.pro, Refrigerator, Compressor, SD137H-L1Z2, 1/10hp, lbp, r134a, 1ph, 220v/50hz

Mbsm.pro, compressor, C-BF75L52, 1/12 hp, C-bf,

Kulthorn, Group – HERMETIC, 80 w, 3.63 cm³, lbp, r134a

written by Lilianne | 10 February 2024



Private Picture Copyright : WWW.MBSM.PRO

Mbsm.pro, compressor, C-BF75L52, 1/12 hp, C-bf, Kulthorn,
Group – HERMETIC, 80 w, 3.63 cm³, lbp, r134a

**Mbsm.pro, Compressor,
HYK12AA, HTK12AA HMK12AA,
HYK12AA, REFRIGERATOR, 1/4
hp, lbp, r600a, 197 w**

written by Lilianne | 10 February 2024



Private Picture Copyright : WWW.MBSM.PRO

Mbsm.pro, Compressor, HYK12AA, HTK12AA HMK12AA, HYK12AA, REFRIGERATOR, 1/4 hp, 1bp, r600a, 197 w

**Mbsm.pro, compressor,
NBU1116Y, 1/4 hp, 12.12 cm³,
180 kcal, 209 w, Embraco,
1bp, r600a**

written by Lilianne | 10 February 2024



Private Picture Copyright : WWW.MBSM.PRO

Mbsm.pro, compressor, NBU1116Y, 1/4 hp, 12.12 cm³, 180 kcal, 209 w, Embraco

**Mbsm.pro, Compressor,
Cubigel, GP16CB, R134A, LBP,
3/8 hp**

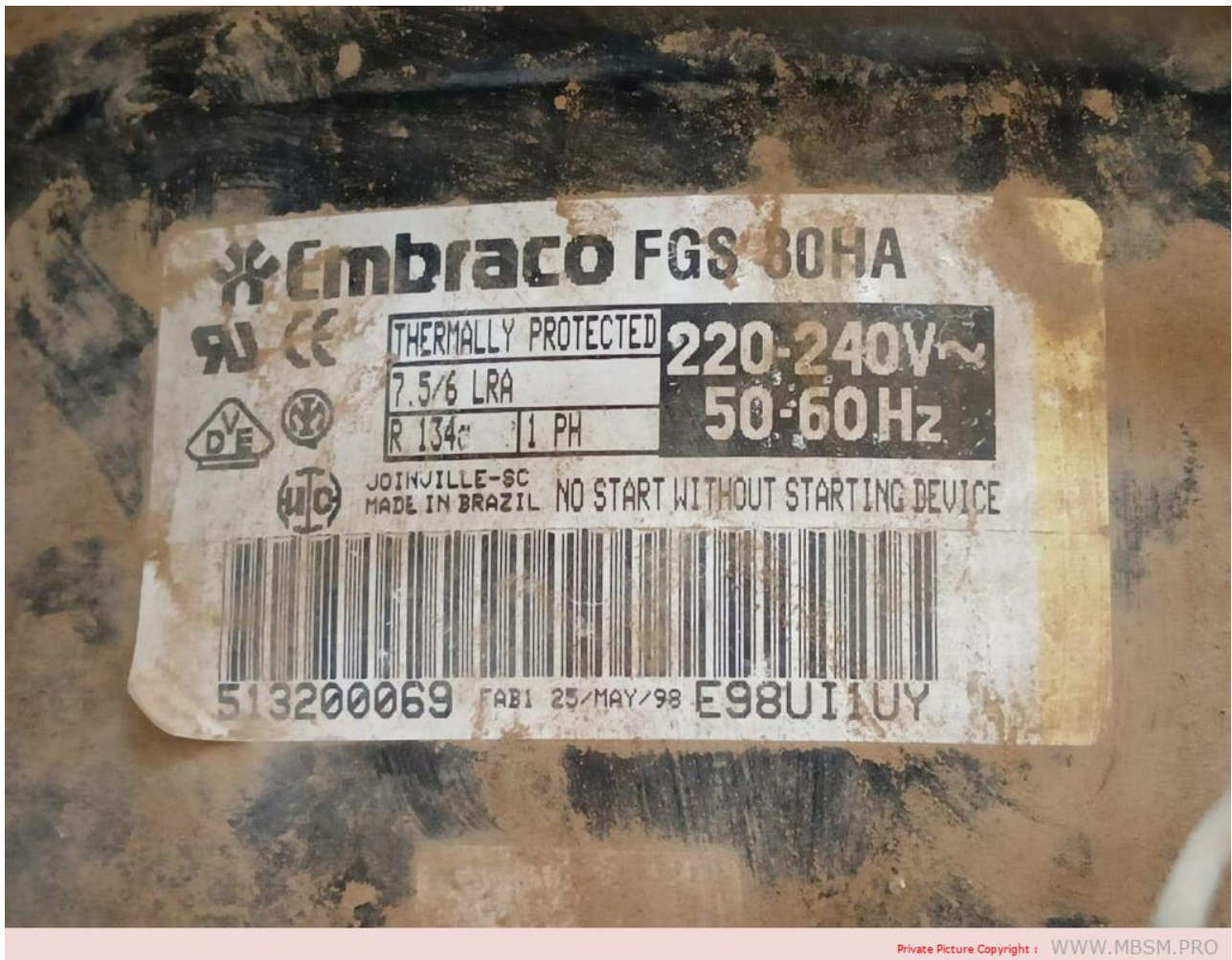
written by Lilianne | 10 February 2024



Mbsm.pro, Compressor, Cubigel, GP16CB, R134A, LBP, 3/8 hp

**Mbsm.pro, COMPRESSOR,
EMBRACO, FGS80HA, FGS 80HA,
r13a, 1/4 hp, lbp, 820 btu**

written by Lilianne | 10 February 2024



Mbsm.pro, COMPRESSOR, EMBRACO, FGS80HA, FGS 80HA, r13a, 1/4 hp, 1bp, 820 btu