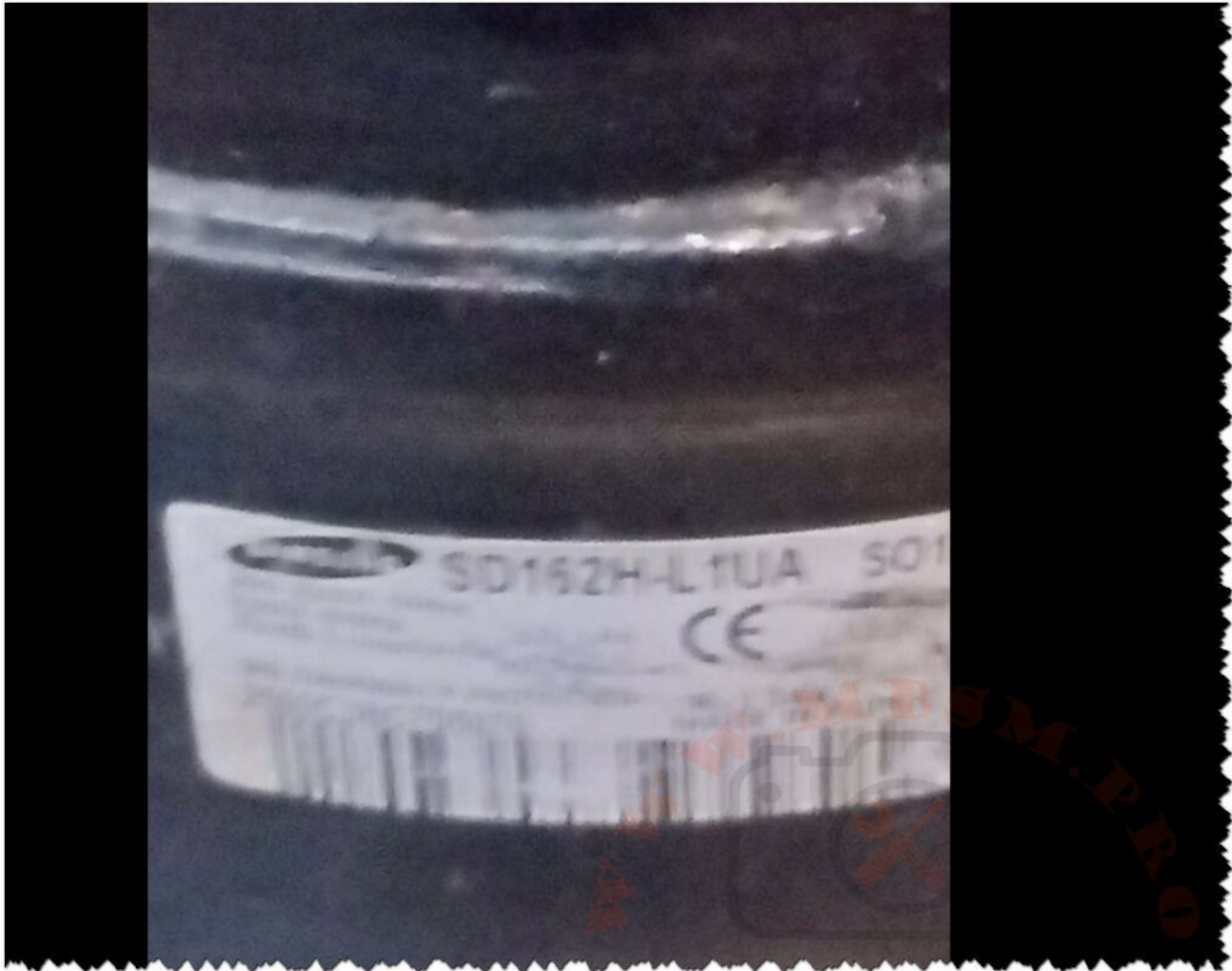


REFRIGERATOR, Samsung refrigerator, CoolTech, Model, SR-38NMB, Capacity: 13 cubic feet, Compressor, SD162P-L1W2 , 1/5 Hp, Lbp, R134A, 198W, input 145 w

Category: compressor, Freezer

written by www.mbsm.pro | 19 December 2021



Private Picture Copyright : WWW.MBSM.PRO

REFRIGERATOR, Samsung refrigerator, CoolTech, Model, SR-38NMB, Capacity: 13 cubic feet, Compressor, SD162P-L1W2 , 1/5 Hp, Lbp, R134A, 198W, input 145 w

Neon compressor, QD128H(360W), 1/3Hp, QD158H(450W), 3/8+, QD142H(395W), 3/8+, QD168H (322W), 1/2Hp, R134a

Category: compressor

written by www.mbsm.pro | 19 December 2021



Neon compressor, QD128H(360W), 1/3Hp, QD158H(450W), 3/8+, QD142H(395W), 3/8+, QD168H (322W), 1/2Hp, R134a

**NE2125GK, NEK2130GK, NEK6181GK,
EMT6165GK, ML90FB, KB2416ZK2,
R404a/R507, 1/3HP, LBP, All
COMPRESSEURS, GAZ R404A – R507,
EMBRACO**

Category: compressor

written by www.mbsm.pro | 19 December 2021

الصفات الفنية

R404a/R507	refrigerant	605334	رقم القطعة
V 220-240	voltage	NEK2130GK	type
LBP	application	Hz 50	frequency
HP 1/3	power	kg 10.9	weight
CSIR	motor system	cm ³ 7.37	cylinder capacity
W 332	power at -25°C	W 255	power at -30°C
W 523	power at -15°C	W 421	power at -20°C
W -	power at -5°C	W 639	power at -10°C
W -	power at +5°C	W -	power at 0°C
R404a/R507	refrigerant	W -	power at +10°C
HP 1/3	power	W -	type
CSIR	motor system	NEK2130GK	cylinder capacity
W 639	power at -10°C	cm ³ 7.37	voltage
W -	power at 0°C	V 220-240	power at -5°C
W 255	power at -30°C	W -	power at +5°C
W 421	power at -20°C	W -	power at -25°C
W -	power at +10°C	W 332	power at -15°C
Hz 50	frequency	W 523	application
		LBP	weight
		kg 10.9	



Private Picture Copyright : WWW.MBSM.PRO

Table of Contents

Copeland		Page
Tecumseh	• Multi-Application Compressors	232-241
	• Specific Application Hermetic Compressors	242-263
Waneurop Inc.		
embraco	• Semi-Hermetic Compressors	264-291, 293-295
	• Service Valves	292-293
BITZER		
BRAINERD	• Open Compressors	295-298
BLISSFIELD		



Private Picture Copyright : WWW.MBSM.PRO

**Compressor coolant R404a/R507 type
NE2125GK 220-240V 50Hz LBP fully
hermetic 10,45kg 1/3HP**

R404a/R507	refrigerant	605018	piece number
HP 1/3	power	NE2125GK	type
CSIR	motor system	cm³ 8.78	cylinder capacity
IN -	power at -5°C	Watts 534	power at -10°C
IN -	power at +5°C	IN -	power at 0°C
.W 213	power at -30°C	.W 160	power at -35°C
.W 354	power at -20°C	.W 278	power at -25°C
IN -	power at +10°C	.W 439	power at -15°C
kg 10.45	weight	LBP	application
V 220-240	voltage	Hz 50	frequency



Private Picture Copyright: WWW.MBSM.PRO

Compressor coolant R404a/R507 type NEK2130GK 220-240V 50Hz LBP 10,9kg 1/3HP

الصفات الفنية

R404a/R507	refrigerant	605334	رقم القطعة
V 220-240	voltage	NEK2130GK	type
LBP	application	Hz 50	frequency
HP 1/3	power	kg 10.9	weight
CSIR	motor system	cm³ 7.37	cylinder capacity
W 332	power at -25°C	W 255	power at -30°C
W 523	power at -15°C	W 421	power at -20°C
W -	power at -5°C	W 639	power at -10°C
W -	power at +5°C	W -	power at 0°C
R404a/R507	refrigerant	W -	power at +10°C
HP 1/3	power	NEK2130GK	type
CSIR	motor system	cm³ 7.37	cylinder capacity
W 639	power at -10°C	V 220-240	voltage
W -	power at 0°C	W -	power at -5°C
W 255	power at -30°C	W -	power at +5°C
W 421	power at -20°C	W 332	power at -25°C
W -	power at +10°C	W 523	power at -15°C
Hz 50	frequency	LBP	application
		kg 10.9	weight

Private Picture Copyright: WWW.MBSM.PRO

NEK6181GK ASPERA EMBRACO COMPRESSOR 1/3HP R404A / R507

DESCRIPTION

NEK6181GK Aspera Embraco compressor

1/3HP

- Refrigerant: R507a R404A
- Power range(W): 1 – 1,5 kW
- Working area: MBP
- Design type: Hermetic
- Use with: Expansion/Capillary
- Power range(HP):0-2
- Power supply: 220 – 240V/1/50Hz
- Oil type: POE22
- Engine type: CSIR
- Article condition:New

EMT6165GK ASPERA EMBRACO COMPRESSOR 1/3HP R404A / R507

DESCRIPTION

Aspera Embraco EMT6165GK compressor 1/3HP

- high evaporation temperature
- Refrigerant: R507a R404A
- Power range(W): 401 – 500 W 701 – 1000 W
- Performance range:-20 C to +10 C
- Connecting size:4,9 mm
- Working area: MBP
- Design type: Hermetic
- Model series: EMT
- Use with: Expansion/Capillary
- Power range(HP):0-2
- Power supply: 240V/1/50Hz
- Oil type: POE22
- Engine type: CSIR
- Article condition:New

Compressor ACC – ML90FB, LBP – R404A, R507, 1/3HP, 220-240V

Compressor ACC – ML90FB, LBP – R404A, 220-240/50Hz Injection: capillary tube / expansion valve Power: 1/3 HP Refrigerating capacity at -25 / +55°C: 276 W, power consumption: 333 W Max Ambient temperature: 43 °C Displacement: 8.85 cm³ Engine type: CSIR Oil filling: 400 cm³ Oil type: ISO VG 46 ESTER Starting element: HST Start capacitor: 47- 56 / 330 µF/V Voltage range: 187-264 V Starting current: 12.2 A Weight: 11 kg Connections: 6.5 x 4.9 mm Main winding resistance: 8.42 (25°C) Ohm Winding resistance: 29.75 (25°C) Ohm. cooling capacity measured for condensation temperature of: 45°C, measuring conditions: ASHRAECooling capacity

-10 °C -15 °C -20 °C -25 °C -30 °C -35 °C -40 °C

729 606 495 394 305 227 161

Shipping Class Standard
Scope Of Application LBP
Lieferzeit 2-3 Wochen
Type Of Construction Piston
Condensation Temperature 45°C
Maker ACC
Manufacturer No. ML90FB
Displacement In Cm3 8.85
Measuring Requirements Ashrae
Refrigerants R404A, R507
Series ML
Condensing Units Compressors Compressors
Suspense 220-240V
Weight In Kg 12.1

**Supco KB2416ZK2 – Compressor LBP HST
1/3HP 1580/1696 BTU 208/230V – R404a
/ R507 Refrigerant – 1580 / 1696 BTU
@ -10°F – 0.32" I.D. Suction Size –
0.19" I.D. Discharge**

Stock Code KB2416ZK2
Brand Supco
Voltage (V) 208 / 230 VAC
Phase Single Phase
HP Rating: 1 / 3 HP
Oil Charge (oz.) 507 cc.
Motor High Start Torque
Operates Icemakers; Refrigerators
Cross Refefence Replacement Part:NEK2134GK ; Manufacturer :Embraco

[Mbsm_dot_pro_private_PDF_KB2416ZK2_prd_001_1_Télécharger](#)

FREON R404a/R507 220-240V 50HZ

Code	Prix	Type	Marque	Puissance HP	Cylindrée CM3	Pression	Schéma électrique	Capacité frigorifique en watt-10°C-5°C0°C+5°C			
SEQ616	89.51€	EMT6144GK	EMBRACO	1/5	3.97	HMBP	CSIR	360	438	530	630
SEQ608	85.02€	NEK6181GK	EMBRACO	1/3	7.28	HMBP	CSIR	565	689	836	1006
SEQ690	86.26€	NEK6210GK	EMBRACO	3/8	8.78	HMBP	CSIR	669	821	999	1205
SEQ709	122.29€	AEZ4425Z	UNITE HERMETIQUE	1/5	4.50	HMBP	CSIR	263	341	432	587
VNQ6987	114.69€	NEK2125GK	EMBRACO	1/4	6.20	LBP	CSIR	243	314	398	494
VASQ6276	112.12€	NEK6144GK	EMBRACO	1/4L	4.52	HMBP	CSIR	368	451	549	660
SEQ703	132.23€	NEK6213GK	EMBRACO	1/2	12.12	HMBP	CSIR	919	1120	1350	1610
CYQ6367	155.22€	NEK2168GK	EMBRACO	5/8	14.30	LBP	CSR	500	650	828	1030
FQQ6559	144.34€	NEK6217GK	EMBRACO	5/8	14.30	HMBP	CSR	1120	1360	1630	1932

VGQ6677	192.44€	AE4470Z	UNITE HERMETIQUE	1/2	12.00	HMBP	CSIR		
VGQ6676	180.64€	AE4450Z	UNITE HERMETIQUE	3/8	8.80	HMBP	CSIR		
SEQ912	198.59€	NJ2212GK	EMBRACO	1.7	34.37	LBP	CSR	945	1333 1775 2273
SEQ617	191.35€	NEK2150GK	EMBRACO	5/8	12.12	LBP	CSIR	445	570 716 888
SEQ902	175.39€	NT6222GK	EMBRACO	3/4	17.40	HMBP	CSR	1280	1590 1930 2308
SEQ609	221.62€	NJ2192GK	EMBRACO	1.2	26.00	LBP	CSR	752	1120 1345 1725
VNQ6902	198.45€	NT6226GK	EMBRACO	1	22.40	HMBP	CSR	1744	2144 2598 3095
VNQ6916	223.47€	NJ9232GK	EMBRACO	1.2	26.20	HMBP	CSR	1953	2458 3182 4070
SEQ674	256.69€	CAJ2432Z	UNITE HERMETIQUE	3/4	18.30	LBP	CSR	510	792 865 1560
CYQ6239	276.42€	CAJ2446Z	UNITE HERMETIQUE	1.2	26.10	LBP	CSR	797	1194 1423 2290
CYQ6236	287.60€	CAJ2428Z	UNITE HERMETIQUE	5/8	15.20	LBP	CSR	394	628 762 1261
IQ1517	307.80€	CAJ9480Z	UNITE HERMETIQUE	5/8	15.20	HMBP	CSR	1009	1284 1607 2172
SEQ990	354.18€	CAJ4517Z	UNITE HERMETIQUE	1.2	25.90	HMBP	CSR	1776	2273 2857 3860
SEQ999	284.58€	CAJ9510Z	UNITE HERMETIQUE	1	18.30	HMBP	CSR	1252	1583 1972 2650
ZNEQ6572	360.83€	CAJ2464Z	UNITE HERMETIQUE	1.5	34.40	LBP	CSR	1076	1605 1902 3012
VASQ6285	348.56€	NJ9238GK	EMBRACO	1.5	32.70	HMBP	CSR	2485	2956 3509 4563
SEQ601	367.83€	NT6220GK	EMBRACO	5/8	14.50	HMBP	CSR	1126	1395 1700
SEQ921	394.30€	CAJ9513Z	UNITE HERMETIQUE	1.1	24.20	HMBP	CSR	1501	1955 2485 3406
VASQ7698	392.13€	CAJ4519Z	UNITE HERMETIQUE	1.5	34.40	HMBP	CSR	2353	3009 3756 5030
ZRQ7716	441.16€	CAJ2440Z	UNITE HERMETIQUE	1	22.80	LBP	CSR	647	945 1166 1876

HMP: Haute moyenne pression

HP: Haute pression

LBP: Basse pression

FREON R404a/R507 220-240V 50HZ

Code	Prix	Type	Marque	Puissance HP	Cylindrée CM3	Pression	Schéma électrique	Capacité frigorigène en watt-10°C-5°C0°C+5°C	
SEQ616	89.51€	EMT6144GK	EMBRACO	1/5	3.97	HMBP	CSIR	360	438 530 630
SEQ608	85.02€	NEK6181GK	EMBRACO	1/3	7.28	HMBP	CSIR	565	689 836 1006
SEQ690	86.26€	NEK6210GK	EMBRACO	3/8	8.78	HMBP	CSIR	669	821 999 1205
SEQ709	122.29€	AEZ4425Z	UNITE HERMETIQUE	1/5	4.50	HMBP	CSIR	263	341 432 587
VNQ6987	114.69€	NEK2125GK	EMBRACO	1/4	6.20	LBP	CSIR	243	314 398 494
VASQ6276	112.12€	NEK6144GK	EMBRACO	1/4L	4.52	HMBP	CSIR	368	451 549 660
SEQ703	132.23€	NEK6213GK	EMBRACO	1/2	12.12	HMBP	CSIR	919	1120 1350 1610
CYQ6367	155.22€	NEK2168GK	EMBRACO	5/8	14.30	LBP	CSR	500	650 828 1030
FQ6559	144.34€	NEK6217GK	EMBRACO	5/8	14.30	HMBP	CSR	1120	1360 1630 1932
VGQ6677	192.44€	AE4470Z	UNITE HERMETIQUE	1/2	12.00	HMBP	CSIR		
VGQ6676	180.64€	AE4450Z	UNITE HERMETIQUE	3/8	8.80	HMBP	CSIR		
SEQ912	198.59€	NJ2212GK	EMBRACO	1.7	34.37	LBP	CSR	945	1333 1775 2273
SEQ617	191.35€	NEK2150GK	EMBRACO	5/8	12.12	LBP	CSIR	445	570 716 888
SEQ902	175.39€	NT6222GK	EMBRACO	3/4	17.40	HMBP	CSR	1280	1590 1930 2308
SEQ609	221.62€	NJ2192GK	EMBRACO	1.2	26.00	LBP	CSR	752	1120 1345 1725
VNQ6902	198.45€	NT6226GK	EMBRACO	1	22.40	HMBP	CSR	1744	2144 2598 3095
VNQ6916	223.47€	NJ9232GK	EMBRACO	1.2	26.20	HMBP	CSR	1953	2458 3182 4070
SEQ674	256.69€	CAJ2432Z	UNITE HERMETIQUE	3/4	18.30	LBP	CSR	510	792 865 1560
CYQ6239	276.42€	CAJ2446Z	UNITE HERMETIQUE	1.2	26.10	LBP	CSR	797	1194 1423 2290

CYQ6236	287.60€	CAJ2428Z	UNITE HERMETIQUE	5/8	15.20	LBP	CSR	394	628 762 1261
IQ1517	307.80€	CAJ9480Z	UNITE HERMETIQUE	5/8	15.20	HMBP	CSR	1009	1284 1607 2172
SEQ990	354.18€	CAJ4517Z	UNITE HERMETIQUE	1.2	25.90	HMBP	CSR	1776	2273 2857 3860
SEQ999	284.58€	CAJ9510Z	UNITE HERMETIQUE	1	18.30	HMBP	CSR	1252	1583 1972 2650
ZNEQ6572	360.83€	CAJ2464Z	UNITE HERMETIQUE	1.5	34.40	LBP	CSR	1076	1605 1902 3012
VASQ6285	348.56€	NJ9238GK	EMBRACO	1.5	32.70	HMBP	CSR	2485	2956 3509 4563
SEQ601	367.83€	NT6220GK	EMBRACO	5/8	14.50	HMBP	CSR	1126	1395 1700
SEQ921	394.30€	CAJ9513Z	UNITE HERMETIQUE	1.1	24.20	HMBP	CSR	1501	1955 2485 3406
VASQ7698	392.13€	CAJ4519Z	UNITE HERMETIQUE	1.5	34.40	HMBP	CSR	2353	3009 3756 5030
ZRQ7716	441.16€	CAJ2440Z	UNITE HERMETIQUE	1	22.80	LBP	CSR	647	945 1166 1876

HMP: Haute moyenne pression

HP: Haute pression

LBP: Basse pression

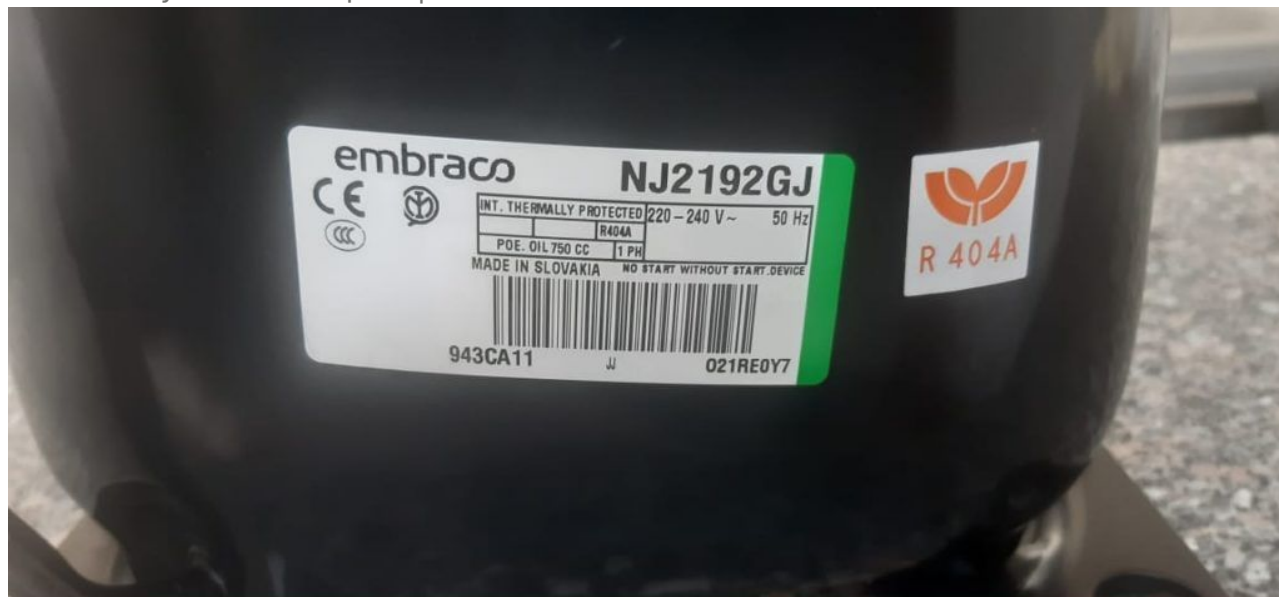
FREON R404a/R507 220-240V 50HZ

CODE	TYPE	MARQUE	PUISSANCE HP	CYLINDREE CM3	PRESSION	schema electrique	capacité frigorifique en watt			
							-10°	-5°	0	+5°
FRD161	EMT6144GK	EMBRACO	1/5	3,97	HMBP	CSIR	360	438	530	630
ITD1112	EMT6152GK	EMBRACO	1/4L	4,5	HMBP	CSIR	396	483	582	695
INFD1721	NEK6144GK	EMBRACO	1/4L	4,52	HMBP	CSIR	368	451	549	660
SCD1726	NEK6165GK	EMBRACO	1/4	6,2	HMBP	CSIR	520	626	751	895
FRD153	NEK6181GK	EMBRACO	1/3	7,28	HMBP	CSIR	565	689	836	1006
FRD145	NEK6210GK	EMBRACO	3/8	8,78	HMBP	CSIR	669	821	999	1205
FRD258	NEK6213GK	EMBRACO	1/2	12,12	HMBP	CSIR	919	1120	1350	1610
SDD1004	NEK6217GK	EMBRACO	5/8	14,3	HMBP	CSR	1120	1360	1630	1932
FRD156	NT6220GK	EMBRACO	5/8	14,5	HMBP	CSR	1126	1395	1700	
FRD457	NT6222GK	EMBRACO	3/4	17,4	HMBP	CSR	1280	1590	1930	2308
IAD1457	NT6226GK	EMBRACO	1	22,4	HMBP	CSR	1744	2144	2598	3095
IAD1461	NJ9232GK	EMBRACO	1,2	26,2	HMBP	CSR	1953	2458	3182	4070
INFD1730	NJ9238GK	EMBRACO	1,5	32,7	HMBP	CSR	2485	2956	3509	4563
IAD1432	NEK2125GK	EMBRACO	1/4	6,2	LBP	CSIR	243	314	398	494
FRD162	NEK2150GK	EMBRACO	5/8	12,12	LBP	CSIR	445	570	716	888
PLD1812	NEK2168GK	EMBRACO	5/8	14,3	LBP	CSR	500	650	828	1030
SDD1019	NT2178GK	EMBRACO	3/4	17,4	LBP	CSR	544	735	956	1206
FRLD4079	NT2180GK	EMBRACO	1	20,4	LBP	CSR	648	856	1100	1380
INFD1712	NT2192GK	EMBRACO	1,1	22,4	LBP	CSR	754	998	1280	1598
FRD154	NJ2192GK	EMBRACO	1,2	26	LBP	CSR	752	1120	1345	1725
FRD467	NJ2212GK	EMBRACO	1,7	34,37	LBP	CSR	945	1333	1775	2273
FRD254	AE4425Z	UNITE HERMETIQUE	1/5	4,5	HMBP	CSIR	263	341	432	587
FRD697	AE4430Z	UNITE HERMETIQUE	1/4	5,2	HMBP	CSIR				
ICD6081	AE4440Z	UNITE HERMETIQUE	1/3	6,7	HMBP	CSIR				
ITD1121	AE4450Z	UNITE HERMETIQUE	3/8	8,8	HMBP	CSIR				
ITD1122	AE4470Z	UNITE HERMETIQUE	1/2	12	HMBP	CSIR				
VD6062	CAJ9480Z	UNITE HERMETIQUE	5/8	15,2	HMBP	CSR	1009	1284	1607	2172
FRD444	CAJ9510Z	UNITE HERMETIQUE	1	18,3	HMBP	CSR	1252	1583	1972	2650
FRD476	CAJ9513Z	UNITE HERMETIQUE	1,1	24,2	HMBP	CSR	1501	1955	2485	3406
FRD445	CAJ4517Z	UNITE HERMETIQUE	1,2	25,9	HMBP	CSR	1776	2273	2857	3860
INFD2143	CAJ4519Z	UNITE HERMETIQUE	1,5	34,4	HMBP	CSR	2353	3009	3756	5030
BTD2320	AE2420Z	UNITE HERMETIQUE	1/2	12,6	LBP	CSIR	357	547	654	1047
PLD1781	CAJ2428Z	UNITE HERMETIQUE	5/8	15,2	LBP	CSR	394	628	762	1261
FRD129	CAJ2432Z	UNITE HERMETIQUE	3/4	18,3	LBP	CSR	510	792	865	1560
MED2261	CAJ2440Z	UNITE HERMETIQUE	1	22,8	LBP	CSR	647	945	1166	1876
PLD1784	CAJ2446Z	UNITE HERMETIQUE	1,2	26,1	LBP	CSR	797	1194	1423	2290
MARD1027	CAJ2464Z	UNITE HERMETIQUE	1,5	34,4	LBP	CSR	1076	1605	1902	3012

COMPRESSOR, ASPERA, NJ2192GK, 1.1/4 HP, 220V, 1PH, R404A, LBP, 1199w

Category: compressor

written by www.mbsm.pro | 19 December 2021



Private Picture Copyright: WWW.MBSM.PRO

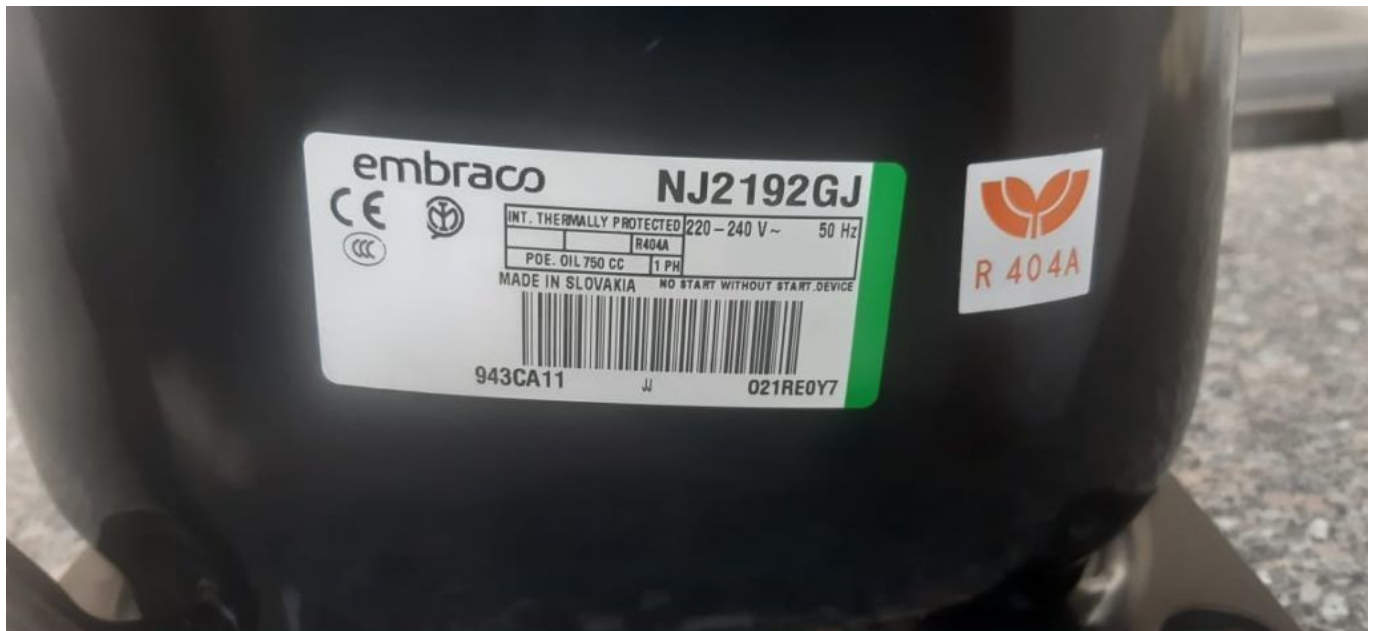
Compressor ASPERA NJ2192GJ | NJ 2192 GJ

Product replaced the old model NJ2192GK

Refrigerant	R404A
Working range[stC] LBP	-40 do -10
Nominal capacity [W] (evaporating temperature -23,3C, Condensing temperatur +54,4C)	1199
Power supply	220-240V 50Hz
Engine type	CSR
Displacement [cm ³]	26,10
Weight [kg]	22
Condensing temperature +55 C	

Evaporating Temperature °C	Cooling Capacity +/-5%			Power Consumption +/-5%	Current Consumption +/-5%
	(kcal/h)	(W)	(Btu/h)	(W)	(A)
-40					
-35					
-30		797		773	4,37
-25		1084		908	4,92
-20		1413		1045	5,49
-15		1784		1181	6,10
-10		2196		1317	6,72

Refrigerant: R404A



Private Picture Copyright : WWW.MBSM.PRO

Mbsm_dot_pro_private_PDF_pdf_NJ219GJTélécharger

All, Aspera, R12, Compressor,
240V~50hZ, EMBRACO, j2170, Compressor
Motor, CC 34.37, 1HP

Category: compressor

written by www.mbsm.pro | 19 December 2021



Immagine di catalogo indicativa

Private Picture Copyright : WWW.MBSM.PRO

Aspera R12 Compressors

All Aspera compressors are developed for quiet operation, high reliability & compact dimensions. All single phase models are supplied with their respective electrical components. The 'J' family come complete with a 1" rotalock threaded spud connection, except those categorised as air conditioning versions, these like all other compressor families are supplied with brazed connections.

Key Product Features:

Compressor Model	Motor (HP)	Motor Type	Displacement (CC)	Capacity (Watts)	FLC (Amps)	LRA (Amps)	Cooling Type	Weight (kg)	Height (mm)
R12 LPB									
NB1116B	1/3	RSIR	8.0	134	1.1	9.5	S	9.8	187
NB2118B	1/4	CSIR	8.9/	160	0.9	9.3	S	10.4	187
NE2121A	1/4	CSIR	12.0	192	1.8	11.0	F	10.6	200
T2134A	1/2	CSIR	17.4	306	2.4	30.0	F	13.1	191
T2140A	1/2	CSIR	20.4	340	3.0	20.0	F	14.0	221

Related Products









Private Picture Copyright : WWW.MBSM.PRO

Mbsm_dot_pro_private_PDF_pdf_j2170a-1Télécharger

Mbsm_dot_pro_private_PDF_pdf_j2170a-1-1Télécharger

Codice	Descrizione	HP	Cilindrata	Gas	Volt	Marca
A1116A	Compressore Aspera LBP	1/5	8,00	R12	220	ASPERA
A11RV	Compressore Necchi LBP	1/2	11,11	R502	220	NECCHI
A11V	Compressore Necchi LBP	1/4	11,11	R12	220	NECCHI
A13R	Compressore Necchi LBP	5/8	13,34	R502	220	NECCHI
A13RV	Compressore Necchi LBP	5/8	13/34	R502	220	NECCHI
A13V	Compressore Necchi LBP	1/3	13,35	R12	220	NECCHI
A2116A	Compressore Aspera LBP	1/5	8,00	R12	220	ASPERA
A2118A	Compressore Aspera LBP	1/4	8,85	R12	220	ASPERA
A2121A	Compressore Aspera LBP	1/4	12,00	R12	220	ASPERA
A5160A	Compressore Aspera HBP	1/4	8,00	R12	220	ASPERA

Codice	Descrizione	HP	Cilindrata	Gas	Volt	Marca
A6170A	Compressore Aspera HBP	1/4	8,85	R12	220	ASPERA
A9RV	Compressore Necchi LBP	1/3	9,29	R502	220	NECCHI
AE41ZF11	Compressore Tecumseh	1/4	8,85	R12	220	Tecumseh
AE4450Z	Compressore L'Unitè Hermetique M-HBP	3/8	8,85	R404A	220	L'Unitè Hermetique
AEZ2411Z	Compressore L'Unitè Hermetique LBP	1/3	7,60	R404A	220	L'Unitè Hermetique
AEZ2415Z	Compressore L'Unitè Hermetique LBP	1/3	8,10	R404A	220	L'Unitè Hermetique
AEZ4425Y	Compressore L'Unitè Hermetique M-HBP	1/4	7,55	R134A	220	L'Unitè Hermetique
AEZ4425Z	Compressore L'Unitè Hermetique M-HBP	1/5	4,50	R404A	220	L'Unitè Hermetique
AEZ4430Y	Compressore L'Unitè Hermetique M-HBP	1/4	8,85	R134A	220	L'Unitè Hermetique
AEZ4430Z	Compressore L'Unitè Hermetique M-HBP	1/4	5,70	R404A	220	L'Unitè Hermetique
AEZ4440Z	Compressore L'Unitè Hermetique M-HBP	1/3	7,55	R404A	220	L'Unitè Hermetique
AS75AA	Compressore Electrolux LBP	1/5	6,64	R134A	220	ELECTROLUX
B6144GK	Compressore Aspera HBP	1/5	4,39	R404A	220	ASPERA
BP1046Z	Compressore Aspera LBP	1/15	2,85	R134A	220	ASPERA
BP1058Z	Compressore Aspera LBP	1/12	3,44	R134A	220	ASPERA
BP1111Z	Compressore Aspera LBP	1/6	5,93	R134A	220	ASPERA
BP5125H	Compressore Aspera MBP/HBP	1/10	3,40	R134A	220	ASPERA
BP5128H	Compressore Embraco HBP	1/10	4,60	R134A	220	EMBRACO
BPM1072Z	Compressore Embraco LBP		3,43	R134A	220	EMBRACO
CAE2417Z	Compressore L'Unitè Hermetique LBP	3/8	11,30	R404A	220	L'Unitè Hermetique
CAE2420Z	Compressore L'Unitè Hermetique LBP	1/2	12,54	R404A	220	L'Unitè Hermetique
CAE2424Z	Compressore L'Unitè Hermetique LBP	5/8	15	R404A	220	L'Unitè Hermetique
CAE4440Y	Compressore L'Unitè Hermetique M-HBP	1/3	12,05	R134A	220	L'Unitè Hermetique
CAE4448Y	Compressore L'Unitè Hermetique M-HBP	3/8	14,15	R134A	220	L'Unitè Hermetique
CAE4450Z	Compressore L'Unitè Hermetique M-HBP	3/8	9,40	R404A	220	L'Unitè Hermetique

Codice	Descrizione	HP	Cilindrata	Gas	Volt	Marca
CAE4456Y	Compressore L'Unitè Hermetique M-HBP	1/2	16,00	R134A	220	L'Unitè Hermetique
CAE9450Z	Compressore L'Unitè Hermetique M-HBP	3/8	9,40	R404A	220	L'Unitè Hermetique
CAE9460Z	Compressore L'Unitè Hermetique M-HBP	1/2	11,30	R404A	220	L'Unitè Hermetique
CAE9470Z	Compressore L'Unitè Hermetique M-HBP	5/8	13,30	R404A	220	L'Unitè Hermetique
CAJ2428Z	Compressore L'Unitè Hermetique LBP	5/8	15,20	R404A	220	L'Unitè Hermetique
CAJ2432Z	Compressore L'Unitè Hermetique LBP	3/4	18,30	R404A	220	L'Unitè Hermetique
CAJ2440Z	Compressore L'Unitè Hermetique LBP	1		R404A	220	L'Unitè Hermetique
CAJ2446Z	Compressore L'Unitè Hermetique LBP	1,2	26,15	R404A	220	L'Unitè Hermetique
CAJ2464Z	Compressore L'Unitè Hermetique LBP	1,7	34,45	R404A	220	L'Unitè Hermetique
CAJ2T12A	Compressore L'Unitè Hermetique LBP	1,2		R404A	220	L'Unitè Hermetique
CAJ4461Y	Compressore L'Unitè Hermetique M-HBP	1/2	18,30	R134A	220	L'Unitè Hermetique
CAJ4476Y	Compressore L'Unitè Hermetique M-HBP	3/4	21,75	R134A	220	L'Unitè Hermetique
CAJ4492Y	Compressore L'Unitè Hermetique M-HBP	3/4	25,95	R134A	220	L'Unitè Hermetique
CAJ4511Y	Compressore L'Unitè Hermetique M-HBP	1	32,70	R134A	220	L'Unitè Hermetique
CAJ4519T	Compressore L'Unitè Hermetique M-HBP	1,5	34,45	R22	220	L'Unitè Hermetique
CAJ4519Z	Compressore L'Unitè Hermetique M-HBP	1,5	34,45	R404A	220	L'Unitè Hermetique
CAJ9480Z	Compressore L'Unitè Hermetique M-HBP	5/8		R404A	220	L'Unitè Hermetique
CAJ9510T	Compressore L'Unitè Hermetique M-HBP	3/4	18,30	R22	220	L'Unitè Hermetique
CAJ9510Z	Compressore L'Unitè Hermetique M-HBP	3/4		R404A	220	L'Unitè Hermetique
CAJ9513T	Compressore L'Unitè Hermetique M-HBP	1,1	24,20	R22	220	L'Unitè Hermetique
CAJ9513Z	Compressore L'Unitè Hermetique M-HBP	1,1		R404A	220	L'Unitè Hermetique
CAJ9517Z	Compressore L'Unitè Hermetique M-HBP	1,2		R404A	220	L'Unitè Hermetique
E2121A	Compressore Aspera LBP	1/4	12,00	R12	220	ASPERA
E6187A	Compressore Aspera HBP	1/3	12,00	R12	220	ASPERA
E7213F	Compressore Aspera AC	1/2	12,12	R22	220	ASPERA

Codice	Descrizione	HP	Cilindrata	Gas	Volt	Marca
E7215F	Compressore Aspera AC	1/2	13,25	R22	220	ASPERA
EGL45AA	Compressore Electrolux LBP	1/8	4,56	R134A	220	ELECTROLUX
EGL60AA	Compressore Electrolux LBP	1/6		R134A	220	ELECTROLUX
EGL80AA	Compressore Electrolux LBP	1/5	8,10	R134A	220	ELECTROLUX
EGL80TB	Compressore Electrolux M-HBP	1/5		R134A	220	ELECTROLUX
EGL90AA	Compressore Electrolux LBP	1/4	9,08	R134A	220	ELECTROLUX
EGL90TB	Compressore Electrolux M-HBP	1/4		R134A	220	ELECTROLUX
EGP12FB	Compressore Electrolux LBP	1/3		R134A	220	ELECTROLUX
EGP12TB	Compressore Electrolux M-HBP	3/8		R134A	220	ELECTROLUX
EM60HNP	Compressore Embraco LBP	1/6	5,54	R134A	220	EMBRACO
EMT2117GK	Compressore Embraco LBP	1/4	4,50	R404A	220	EMBRACO
EMT2117U	Compressore Embraco LBP	1/5	3,97	R290	220	EMBRACO
EMT2121GK	Compressore Embraco LBP	1/3	5,19	R404A	220	EMBRACO
EMT2121U	Compressore Embraco LBP	1/4	5,57	R290	220	EMBRACO
EMT2125GK	Compressore Embraco LBP	1/3	5,96	R404A	220	EMBRACO
EMT2125U	Compressore Embraco LBP	1/3	5,96	R290	220	EMBRACO
EMT2130U	Compressore Embraco LBP	1/3	6,76	R290	220	EMBRACO
EMT22HLP	Compressore Embraco LBP	1/12	3	R134A	220	EMBRACO
EMT36HLP	Compressore Embraco LBP	1/8	3,97	R134A	220	EMBRACO
EMT37HDP	Compressore Aspera MBP/HBP	1/10	3,30	R134A	220	ASPERA
EMT43HLP	Compressore Embraco LBP	1/6	4,85	R134A	220	EMBRACO
EMT45HDR	Compressore Aspera MBP/HBP	1/8	3,77	R134A	220	ASPERA
EMT49HLP	Compressore Aspera LBP	1/6	6,84	R134A	220	ASPERA
EMT50HDP	Compressore Aspera MBP/HBP	1/6	4,99	R134A	220	ASPERA
EMT60HLP	Compressore Aspera LBP	1/5	7,87	R134A	220	ASPERA

Codice	Descrizione	HP	Cilindrata	Gas	Volt	Marca
EMT6144GK	Compressore Aspera HBP	1/6	4	R404A	220	ASPERA
EMT6144U	Compressore Embraco HMBP	1/5	4,50	R290	220	EMBRACO
EMT6152U	Compressore Embraco HMBP	1/4	5,20	R290	220	EMBRACO
EMT6160Z	Compressore Embraco HMBP	1/4	6,76	R134A	220	EMBRACO
EMT6165GK	Compressore Aspera HBP	1/5	5,20	R404A	220	ASPERA
EMT6165U	Compressore Embraco HMBP	1/4	5,96	R290	220	EMBRACO
EMT6170Z	Compressore Embraco HMBP	1/4	7,69	R134A	220	EMBRACO
EMT6187Z	Compressore Embraco HMBP	1/3	12	R134A	220	EMBRACO
ESM11	Compressore Necchi LBP	1/4	10,63	R12	220	NECCHI
ESM11K	Compressore Necchi LBP	1/4	10,63	R12	220	NECCHI
ESM3.5	Compressore Necchi LBP	1/10	3,50	R12	220	NECCHI
ESM4	Compressore Necchi LBP	1/8	4,10	R12	220	NECCHI
ESM5	Compressore Necchi LBP	1/6	5,11	R12	220	NECCHI
ESM8	Compressore Necchi LBP	1/5	7,75	R12	220	NECCHI
ESM8K	Compressore Necchi LBP	1/5	7,75	R12	220	NECCHI
ESM9	Compressore Necchi LBP	1/4	9,07	R12	220	NECCHI
FR10G	Compressore Danfoss	1/4	9,05	R134A	220	0
FR8 5G	Compressore Danfoss	1/4	7,95	R134A	220	0
GD24AA	Compressore Electrolux LBP	1/20	2,42	R134A	220	ELECTROLUX
GD30MBA	Compressore Electrolux HBP	1/12	3,00	R134A	220	ELECTROLUX
GD36AA	Compressore Electrolux LBP	1/12	3,58	R134A	220	ELECTROLUX
GD36MBA	Compressore Electrolux HBP	1/10	3,60	R134A	220	ELECTROLUX
GD40AA	Compressore Electrolux LBP	1/20	4,03	R134A	220	ELECTROLUX
GL45AA	Compressore Electrolux LBP	1/8	4,56	R134A	220	ELECTROLUX
GL45TB	Compressore Electrolux MBP-MHBP	1/6	4,50	R134A	220	ELECTROLUX
GL60TB	Compressore Electrolux MBP-MHBP	1/5	5,70	R134A	220	ELECTROLUX

Codice	Descrizione	HP	Cilindrata	Gas	Volt	Marca
GL60TG	Compressore HBP	1/5	5,67	R134A	220	ELECTROLUX
GL80AA	Compressore Electrolux LBP	1/5	8,10	R134A	220	ELECTROLUX
GL80TB	Compressore Electrolux MBP-MHBP	1/4	7,60	R134A	220	ELECTROLUX
GL90AA	Compressore Electrolux LBP	1/4	9,08	R134A	220	ELECTROLUX
GL90TB	Compressore Electrolux MBP-MHBP	1/4	8,80	R134A	220	ELECTROLUX
GP12AB	Compressore Electrolux LBP	1/3	12,00	R134A	220	ELECTROLUX
GP12TB	Compressore Electrolux MBP-MHBP	1/3	12,00	R134A	220	ELECTROLUX
GP14TB	Compressore Electrolux MBP-MHBP	3/8	14,00	R134A	220	ELECTROLUX
GQR80TG	Compressore	1/4	8,1	R134A	220	
GR18TB-T	Compressore Electrolux MBP-MHBP	1/2	18,12	R134A	220	ELECTROLUX
GR22TB-T	Compressore Electrolux MBP-MHBP	5/8	21,74	R134A	220	ELECTROLUX
GS26TB-T	Compressore Electrolux MBP-MHBP	3/4	25,95	R134A	220	ELECTROLUX
GS30TB-T	Compressore Electrolux MBP-MHBP	3/4	29,93	R134A	220	ELECTROLUX
GS34TB-T	Compressore Electrolux MBP-MHBP	1	34,25	R134A	220	ELECTROLUX
HGA2426Z	Compressore Rotativo Orizzontale L'Unitè Hermetique LBP		9,5	R404	220	
HGA2432Z	Compressore Rotativo Orizzontale L'Unitè Hermetique LBP		11,5	R404	220	
HGA2436Z	Compressore Rotativo Orizzontale L'Unitè Hermetique LBP		12,7	R404	220	
HGA2446Z	Compressore Rotativo Orizzontale L'Unitè Hermetique LBP		16,1	R404	220	
HGA4445Y	Compressore Rotativo Orizzontale L'Unitè Hermetique MBP		9,5	R134	220	
HGA4450Y	Compressore Rotativo Orizzontale L'Unitè Hermetique MBP		11,5	R134	220	
HGA4460Y	Compressore Rotativo Orizzontale L'Unitè Hermetique MBP		12,7	R134	220	
HGA4467Z	Compressore Rotativo Orizzontale L'Unitè Hermetique MBP		9,5	R404	220	

Codice	Descrizione	HP	Cilindrata	Gas	Volt	Marca
HGA4476Y	Compressore Rotativo Orizzontale L'Unitè Hermetique MBP		16,1	R134	220	
HGA4480Z	Compressore Rotativo Orizzontale L'Unitè Hermetique MBP		11,5	R404	220	
HGA4492Z	Compressore Rotativo Orizzontale L'Unitè Hermetique MBP		12,7	R404	220	
HGA4512Z	Compressore Rotativo Orizzontale L'Unitè Hermetique MBP		16,1	R404	220	
HMK12AA	Compressore ACC LBP		11,20	R600A	220	
HTK12AA	Compressore ACC LBP		11,14	R600A	220	
J2152A	Compressore Aspera LBP	5/8	26,00	R12	220	ASPERA
J2152M	Compressore Aspera LBP	5/8	26,00	R12	220	ASPERA
J2152Z	Compressore Aspera LBP	3/4	27,12	R134A	220	ASPERA
J2170A	Compressore Aspera LBP	1	34,37	R12	220	ASPERA
J2170M	Compressore Aspera LBP	1	34,37	R12	380	ASPERA
J2178E	Compressore Aspera LBP	1	23,50	R22	220	ASPERA
J2190E	Compressore Aspera LBP	1,2	27,10	R22	220	ASPERA
J2192GK	Compressore Aspera LBP	1,2	26,00	R404A	220	ASPERA
J2192GS	Compressore Aspera LBP	1,2	26,00	R404A	380	ASPERA
J2212GK	Compressore Aspera LBP	1,7	34,37	R404A	220	ASPERA
J2212GS	Compressore Aspera LBP	1,7	34,37	R404A	380	ASPERA
J6220A	Compressore Aspera HBP	3/4	25,80	R12	220	ASPERA
J6220Z	Compressore Aspera MBP/HBP	3/4	25,80	R134A	220	ASPERA
J6220ZX	Compressore Aspera MHP/HBP	3/4	25,80	R134A	380	ASPERA
J6226A	Compressore Aspera HBP	1	34,37	R12	220	ASPERA
J6226M	Compressore Aspera HBP	1	34,37	R12	380	ASPERA
J6226Z	Compressore Aspera MBP/HBP	1	34,37	R134A	220	ASPERA
J6226ZX	Compressore Aspera MBP/HBP	1	34,37	R134A	380	ASPERA

Codice	Descrizione	HP	Cilindrata	Gas	Volt	Marca
J7225F	Compressore Aspera AC	1	21,70	R22	220	ASPERA
J7228F	Compressore Aspera AC	1,1	23,80	R22	220	ASPERA
J7228P	Compressore Aspera AC	1,1	23,80	R22	380	ASPERA
J7231F	Compressore Aspera AC	1,2	26,20	R22	220	ASPERA
J7231P	Compressore Aspera AC	1,2	26,20	R22	380	ASPERA
J7238E	Compressore Aspera AC	1,5	32,65	R22	220	
J7238P	Compressore Aspera AC	1,5	32,65	R22	380	
J7240F	Compressore Aspera AC	1,75	34,37	R22	220	
J7240P	Compressore Aspera AC	1,75	34,37	R22	380	
J9226E	Compressore Aspera MBP/HBP	1	21,70	R22	220	
J9226GK	Compressore Aspera HBP	1	21,70	R404A	220	
J9226GS	Compressore Aspera HBP	1	21,70	R404A	380	
J9226P	Compressore Aspera MBP/HBP	1	21,70	R22	380	
J9232E	Compressore Aspera MBP/HBP	1,2	26,20	R22	220	
J9232GK	Compressore Aspera HBP	1,2	26,14	R404A	220	
J9232GS	Compressore Aspera HBP	1,2	26,14	R404A	220	
J9232P	Compressore Aspera MBP/HBP	1,2	26,20	R22	380	
J9238E	Compressore Aspera MBP/HBP	1,5	32,70	R22	220	
J9238GK	Compressore Aspera HBP	1,5	32,70	R404A	220	
J9238GS	Compressore Aspera HBP	1,5	32,70	R404A	380	
J9238P	Compressore Aspera MBP/HBP	1,5	32,70	R22	380	
L40TN	Compressore Electrolux MBP-MHBP	1/6	4,04	R22	220	
L45TN	Compressore Electrolux MBP-MHBP	1/5	4,50	R22	220	
L57TN	Compressore Electrolux MBP-MHBP	1/4	5,67	R22	220	
L76TN	Compressore Electrolux MBP-MHBP	1/4	7,57	R22	220	

Codice	Descrizione	HP	Cilindrata	Gas	Volt	Marca
L88TN	Compressore Electrolux MBP-MHBP	1/3	8,85	R22	220	
MK16TB	Compressore Electrolux MBP-MHBP	3/4	15	R404A-R507-R407B	220	
ML40TB	Compressore Electrolux MBP-MHBP	1/6	4	R404A-R507-R407B	220	
ML45TB	Compressore Electrolux MBP-MHBP	1/5	4,5	R404A-R507-R407B	220	
ML60FB	Compressore Electrolux LBP	1/5	6,00	R404A-R507-R407B	220	
ML60TB	Compressore Electrolux MBP-MHBP	1/4	5,67	R404A-R507-R407B	220	
ML80TB	Compressore Electrolux MBP-MHBP	1/4	7,57	R404A-R507-R407B	220	
ML90FB	Compressore Electrolux LBP	1/4	8,80	R404A-R507-R407B	220	
ML90TB	Compressore Electrolux MBP-MHBP	1/3	8,85	R404A-R507-R407B	220	
MP12FB	Compressore Electrolux LBP	1/3	12	R404A-R507-R407B	220	
MP12TB	Compressore Electrolux MBP-MHBP	1/2	12	R404A-R507-R407B	220	
MP14FB	Compressore Electrolux LBP	1/2	14	R404A-R507-R407B	220	
MP14TB	Compressore Electrolux MBP-MHBP	5/8	14	R404A-R507-R407B	220	
MR18FB	Compressore Electrolux LBP	3/4	18,20	R404A-R507-R407B	220	
MR18TB	Compressore Electrolux MBP-MHBP	1	18,12	R404A-R507-R407B	220	
MR22FB-T	Compressore Electrolux LBP	1	21,80	R404A-R507-R407B	220	
MR22TB	Compressore Electrolux MBP-MHBP	1.1	21,74	R404A-R507-R407B	220	
MR26FB-T	Compressore Electrolux LBP	1.2	26,15	R404A-R507-R407B	220	
MS26TB	Compressore Electrolux MBP-MHBP	1.2	25,95	R404A-R507-R407B	220	
MS34FB-T	Compressore Electrolux LBP	1.5	34,25	R404A-R507-R407B	220	
MX21FB	Compressore Cubigel LBP	3/4	20,72	R404A	220	
N17RV	Compressore Necchi LBP	3/4	17,52	R502	220	
N17V	Compressore Necchi LBP	1/2	17,52	R12	220	
N21RV	Compressore Necchi LBP	1	20,68	R502	220	
N21V	Compressore Necchi LBP	3/4	20,68	R12	220	

Codice	Descrizione	HP	Cilindrata	Gas	Volt	Marca
NB1112Z	Compressore Aspera LBP	1/6	6,72	R134A	220	
NB1116Z	Compressore Aspera LBP	1/5	8,38	R134A	220	
NB1118Z	Compressore Aspera LBP	1/4	8,00	R134A	220	
NB2117GK	Compressore Aspera LBP	1/5	4,39	R404A	220	
NB2118Z	Compressore Aspera LBP	1/4	8,00	R134A	220	
NB2121GK	Compressore Aspera LBP	1/4	6,06	R404A	220	
NB5132Z	Compressore Aspera MBP/HBP	1/6	4,85	R134A	220	
NB5144Z	Compressore Aspera MBP/HBP	1/5	5,90	R134A	220	
NB5160Z	Compressore Aspera MBP/HBP	1/4	8,00	R134A	220	
NB5170Z	Compressore Aspera MBP/HBP	1/4	8,85	R134A	220	
NB6144E	Compressore Aspera MBP/HBP	1/5	5,90	R22	220	
NB6144GK	Compressore Aspera HBP	1/5	4,39	R404A	220	
NB6144Z	Compressore Aspera MBP/HBP	1/5	5,90	R134A	220	
NB6152E	Compressore Aspera MBP/HBP	1/4	4,85	R22	220	
NB6152GK	Compressore Aspera MBP/HBP	1/4	4,88	R404A	220	
NB6160Z	Compressore Aspera MBP/HBP	1/4	8,00	R134A	220	
NB6165E	Compressore Aspera MBP/HBP	1/4	6,00	R22	220	
NB6165GK	Compressore Aspera HBP	1/4	6,06	R404A	220	
NB6170Z	Compressore Aspera MBP/HBP	1/4	8,85	R134A	220	
NBT1116Y	Compressore Embraco LBP		12,12	R600A	220	
NE1130Z	Compressore Aspera LBP	1/3	12,12	R134A	220	
NE2121Z	Compressore Aspera LBP	1/4	13,60	R134A	220	
NE2125E	Compressore Aspera LBP	1/4	8,90	R22	220	
NE2125GK	Compressore Aspera LBP	1/3	8,90	R404A	220	
NE2130Z	Compressore Aspera LBP	1/3	15,28	R134A	220	

Codice	Descrizione	HP	Cilindrata	Gas	Volt	Marca
NE2134E	Compressore Aspera LBP	1/2	12,00	R22	220	
NE2134GK	Compressore Aspera LBP	1/2	12,00	R404A	220	
NE5187Z	Compressore Aspera MBP/HBP	1/3	12,00	R134A	220	
NE6144GK	Compressore Aspera HBP	1/5	4,39	R404A	220	
NE6181E	Compressore Aspera MBP/HBP	1/3	7,40	R22	220	
NE6181GK	Compressore Aspera HBP	1/3	7,38	R404A	220	
NE6187Z	Compressore Aspera MBP/HBP	1/3	12,00	R134A	220	
NE6210E	Compressore Aspera MBP/HBP	3/8	8,90	R22	220	
NE6210GK	Compressore Aspera HBP	3/8	8,90	R404A	220	
NE6210Z	Compressore Aspera MBP/HBP	1/2	13,60	R134A	220	
NE6217GK	Compressore Aspera HBP	5/8	14,28	R404A	220	
NE9213E	Compressore Aspera MBP/HBP	1/2	12,00	R22	220	
NE9213GK	Compressore Aspera HBP	1/2	12,00	R404A	220	
NEK2116Z	Compressore Embraco LBP	1/5		R404A	220	
NEK2125GK	Compressore Embraco LBP	1/3	6,20	R404A	220	
NEK2125U	Compressore Embraco LBP	1/3	7,28	R290	220	
NEK2130GK	Compressore Embraco LBP	1/2	7,38	R404A	220	
NEK2134GK	Compressore Embraco LBP	1/2	8,78	R404A	220	
NEK2134U	Compressore Embraco LBP	1/2	10,00	R290	220	
NEK2140Z	Compressore Embraco LBP	1/2	16,80	R134A	220	
NEK2150GK	Compressore Embraco LBP	5/8	12,12	R404A	220	EMBRACO
NEK2150U	Compressore Embraco LBP	1/2	13,54	R290	220	
NEK2160U	Compressore Embraco LBP	3/4	16,80	R290	220	
NEK2168GK	Compressore Embraco LBP	3/4	14,28	R404A	220	
NEK6144GK	Compressore Aspera HBP	1/5	4,39	R404A	220	

Codice	Descrizione	HP	Cilindrata	Gas	Volt	Marca
NEK6160Z	Compressore Aspera MBP/HBP	1/4	8,00	R134A	220	
NEK6165GK	Compressore Aspera HBP	1/4	6,06	R404A	220	
NEK6170Y	Compressore Aspera MBP/HBP	1/4	14,28	R600A	220	
NEK6170Z	Compressore Aspera MBP/HBP	1/4	8,85	R134A	220	
NEK6181GK	Compressore Aspera HBP	1/3	7,38	R404A	220	
NEK6181U	Compressore Embraco HMBP	1/3	7,28	R290	220	
NEK6187Z	Compressore Embraco Aspera M-HBP	1/3	10	R134A	220	
NEK6210GK	Compressore Embraco HBP	3/8	8,90	R404A	220	
NEK6210U	Compressore Embraco HMBP	3/8	8,78	R290	220	
NEK6212Z	Compressore Embraco MBP-HBP	1/2	14,30	R134A	220	
NEK6213GK	Compressore Embraco HBP	1/2	12,12	R404A	220V	EMBRACO
NEK6213U	Compressore Embraco HMBP	1/2	12,12	R290	220	
NEK6214Z	Compressore Embraco M-HBP	5/8	16,80	R134A	220	
NEK6217GK	Compressore Embraco MBP	5/8	14,28	R404A	220	
NEK6217U	Compressore Embraco HMBP	5/8	14,30	R290	220	
NEU2178GK	Compressore Aspera	1	16,80	R404A	220	0
NJ2152Z	Compressore Aspera LBP	3/4	27,12	R134A	220	
NJ2192GK	Compressore Aspera LBP	1,2	26	R404A	220	
NJ2192GS	Compressore Aspera LBP	1,2	26	R404A	380	
NJ2212GK	Compressore Aspera LBP	1,7	34,37	R404A	220	
NJ6226Z	Compressore Embraco M-HP	1	34,37	R134A	220	
NJ9226GK	Compressore Embraco M-HP	1	21,70	R404A	220	
NJ9226GS	Compressore Embraco M-HP	1	21,70	R404A	380	
NJ9232GK	Compressore Embraco HBP	1,2	26,14	R404A	220	
NJ9232GS	Compressore Embraco HBP	1,2	26,14	R404A	380	EMBRACO

Codice	Descrizione	HP	Cilindrata	Gas	Volt	Marca
NJ9238GK	Compressore Embraco HBP	1,5	32,70	R404A	220	
NJ9238GS	Compressore Embraco HBP	1,5	32,70	R404A	380	
NL7F	Compressore Danfoss LBP	1/5	7,27	R134A	220	
NL8.4MF	Compressore Secop LBP-HBP		8,3	R134A	220	0
NLE11KK4	Compressore Secop LBP		11,15	R600A	220	0
NT2160U	Compressore Embraco LBP	3/4	17,40	R290	220	
NT2168GK	Compressore Embraco LBP	3/4	14,50	R404A	220	
NT2168GS	Compressore Embraco LBP	3/4	14,50	R404A	380	
NT2170U	Compressore Embraco LBP	3/4	20,44	R290	220	
NT2178GK	Compressore Embraco LBP	1	17,40	R404A	220	
NT2180GK	Compressore Embraco LBP	1,1	20,40	R404A	220	
NT2180U	Compressore Embraco LBP	1	22,40	R290	220	
NT2192GK	Compressore Embraco LBP	1,2	22,40	R404A	220	
NT2192GS	Compressore Embraco LBP	1,2	22,40	R404A	380	
NT2210U	Compressore Embraco LBP	1 1/4	27,80	R290	220	
NT2212GK	Compressore Embraco LBP	1,7	27,80	R404A	220	
NT2212GS	Compressore Embraco LBP	1,7	27,80	R404A	380	
NT6217U	Compressore Embraco HMBP	5/8	14,50	R290	220	
NT6220GK	Compressore Embraco HBP	3/4	14,50	R404A	220	
NT6220U	Compressore Embraco HMBP	3/4	17,40	R290	220	
NT6222GK	Compressore Embraco HBP	1	17,40	R404A	220	
NT6222U	Compressore Embraco HMBP	1	20,44	R290	220	
NT6224U	Compressore Embraco HMBP	1 1/4	17,40	R290	220	
NT6226GK	Compressore Embraco HBP	1	22,40	R404A	220	
OF1033A	Compressore ACC LBP		5,73	R134A	220	

Codice	Descrizione	HP	Cilindrata	Gas	Volt	Marca
P12TN	Compressore Electrolux MBP-MHBP	1/2	12	R22	220	
R18TN	Compressore Electrolux MBP-MHBP	7/8	18,12	R22	220	
R18TN-T	Compressore Electrolux MBP-MHBP	3/4	18,12	R22	220	
S19UN	Compressore Electrolux AC	7/8	18,64	R22	220	
S22TN	Compressore Electrolux MBP-MHBP	7/8	21,78	R22	220	
S22TN-T	Compressore Electrolux MBP-MHBP	1	21,78	R22	220	
S26TN	Compressore Electrolux MBP-MHBP	1,1/4	25,95	R22	220	
S26TN-T	Compressore Electrolux MBP-MHBP	1,1	25,95	R22	220	
SC15G	Compressore Secop	3/8	15,28	R134A	220	0
SC18CL	Compressore Danfoss LBP	1	17,69	R404A	220	DANFOSS
SC21CL	Compressore Danfoss LBP	1.1	20,95	R404A	220	DANFOSS
T2124A	Compressore Aspera LBP	1/4	12,58	R12	220	
T2128A	Compressore Aspera LBP	1/3	14,50	R12	220	
T2134A	Compressore Aspera LBP	1/2	17,40	R12	220	
T2134Z	Compressore Aspera LBP	1/2	19,04	R134A	220	
T2140A	Compressore Aspera LBP	1/2	20,40	R12	220	
T2140E	Compressore Aspera LBP	1/2	14,50	R22	220	
T2140GK	Compressore Aspera LBP	1/2	12,58	R404A	220	
T2140Z	Compressore Aspera LBP	1/2	22,40	R134A	220	
T2155E	Compressore Aspera LBP	5/8	17,40	R22	220	
T2155GK	Compressore Aspera LBP	5/8	14,50	R404A	220	
T2168E	Compressore Aspera LBP	3/4	20,40	R22	220	
T2168GK	Compressore Aspera LBP	3/4	17,40	R404A	220	
T2178GK	Compressore Aspera LBP	1	20,40	R404A	220	
T6185A	Compressore Aspera HBP	1/3	12,58	R12	220	

Codice	Descrizione	HP	Cilindrata	Gas	Volt	Marca
T6213A	Compressore Aspera HBP	1/2	17,40	R12	220	
T6213Z	Compressore Aspera MBP/HBP	1/2	17,40	R134A	220	
T6215A	Compressore Aspera HBP	1/2	20,40	R12	220	
T6215Z	Compressore Aspera MBP/HBP	5/8	20,40	R134A	220	
T6217E	Compressore Aspera MBP/HBP	5/8	14,50	R22	220	
T6217GK	Compressore Embraco HBP	5/8	14,51	R404A	220	
T6217Z	Compressore Aspera MBP/HBP	5/8	22,40	R134A	220	
T6220E	Compressore Aspera MBP/HBP	3/4	17,40	R22	220	
T6220GK	Compressore Aspera HBP	3/4	17,40	R404A	220	
T6222GK	Compressore Aspera HBP	1	20,40	R404A	220	
T7220E	Compressore Aspera AC	3/4	17,40	R22	220	
T7223E	Compressore Aspera AC	1	20,40	R22	220	
TAJ2428Z	Compressore L'Unitè Hermetique LBP	5/8	15,20	R404A	380	
TAJ2446Z	Compressore L'Unitè Hermetique LBP	1,2	26,15	R404A	380	
TAJ2464Z	Compressore L'Unitè Hermetique LBP	1,7	34,45	R404A	380	
TAJ4461Y	Compressore L'Unitè Hermetique M-HBP	1/2	18,30	R134A	380	
TAJ4492Y	Compressore L'Unitè Hermetique M-HBP	3/4	25,95	R134A	380	
TAJ4511Y	Compressore L'Unitè Hermetique M-HBP	1	32,70	R134A	380	
TAJ4517T	Compressore L'Unitè Hermetique M-HBP	1,2	25,95	R22	380	
TAJ4517Z	Compressore L'Unitè Hermetique M-HBP	1,2	25,95	R404A	380	
TAJ4519T	Compressore L'Unitè Hermetique M-HBP	1,5	34,45	R22	380	
TAJ4519Z	Compressore L'Unitè Hermetique M-HBP	1,5	34,45	R404A	380	
TAJ5515E	Compressore L'Unitè Hermetique M-HBP		25,95	R22	380	
TAJ9480T	Compressore L'Unitè Hermetique M-HBP	5/8	15,20	R22	380	
TAJ9480Z	Compressore L'Unitè Hermetique M-HBP	5/8	15,20	R404A	380	

Codice	Descrizione	HP	Cilindrata	Gas	Volt	Marca
TAJ9510T	Compressore L'Unitè Hermetique M-HBP	3/4	18,30	R22	380	
TAJ9510Z	Compressore L'Unitè Hermetique M-HBP	3/4	18,30	R404A	380	
TAJ9513T	Compressore L'Unitè Hermetique M-HBP	1/1	24,20	R22	380	
TAJ9513Z	Compressore L'Unitè Hermetique M-HBP	1/1	24,20	R404A	380	
TL4DL	Compressore Danfoss HBP	1/5	3,86	R404A	220	
TL4F	Compressore Danfoss LBP		3,86	R134A	220	
TL5G	Compressore Danfoss LBP-HBP		5,08	R134A	220	
ZBS1114CY	Compressore Aspera	1/5	11,20	R600A	220	0

Compresseur, Mitsubishi, Electric
MITSUBISHI, RH174VHAC, 9000 BTU/heure
(2,6 kW), 220-240V 50Hz, R22

Category: compressor

written by www.mbsm.pro | 19 December 2021



Private Picture Copyright: WWW.MBSM.PRO

Modèle – Mitsubishi Electric RH 174 VHAC (9000Btu)

Productivité – 9000 BTU/heure (2,6 kW)

Alimentation – 220-240V 50Hz

Réfrigérant (fréon) – R22

Entre vannes – 15 cm

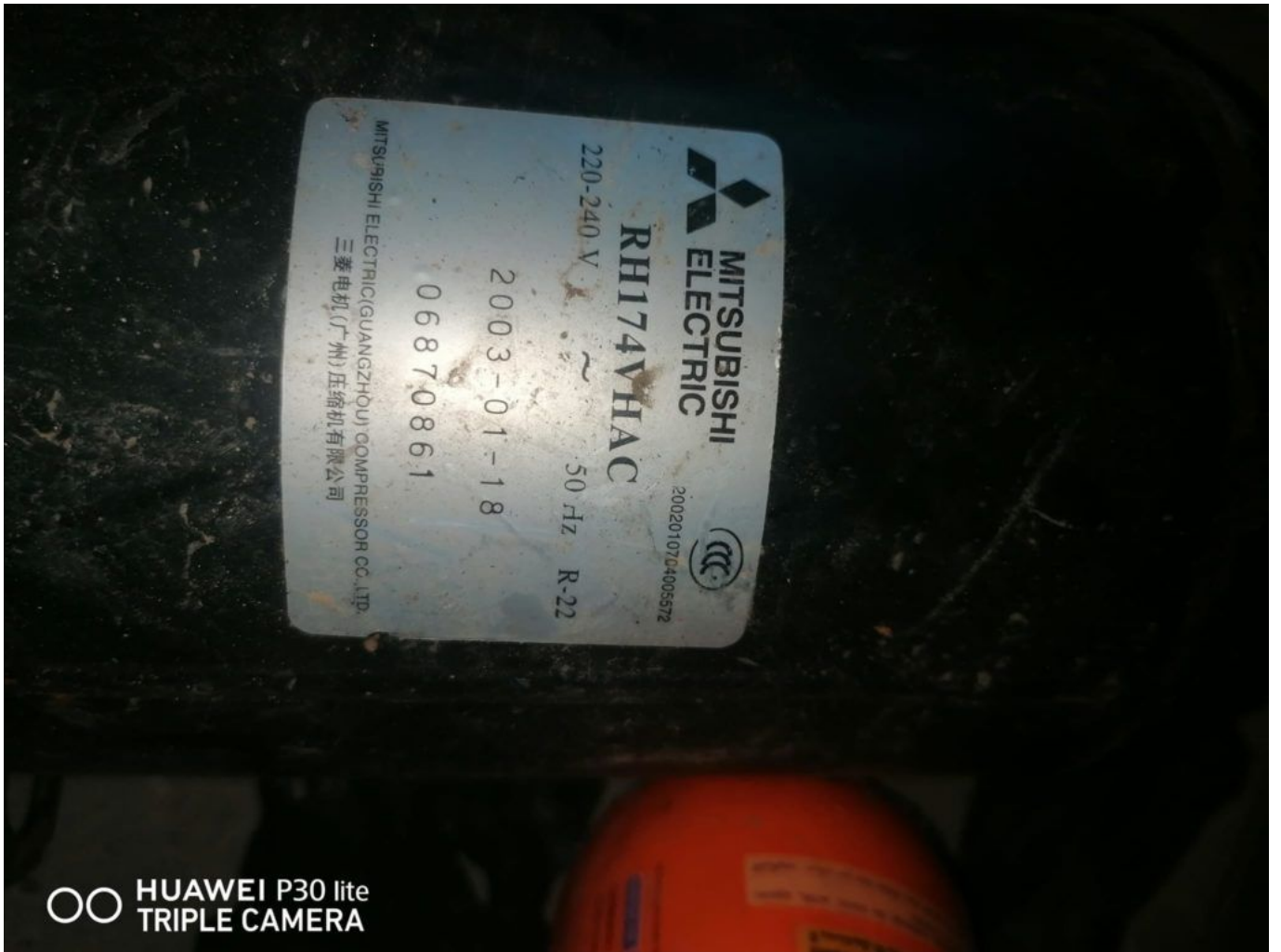
Hauteur compresseur – 22 cm

Diamètre compresseur – 13 cm

#mbsmpro

Mbsm_dot_pro_private_PDF_pdf_RH174VHACTélécharger

Mbsm_dot_pro_private_picture_RH174VHACTélécharger



mbsm.pro, Refrigeration, Compressor,
GFF57AA, SEBERIA, Hermetic,
Compressor GFF57AA, LBP, R134a,
Disp.5.7cc, 1/5HP, Series, LBP

Category: compressor

written by www.mbsm.pro | 19 December 2021



Private Picture Copyright : WWW.MBSM.PRO

mbsm.pro, Refrigeration, Compressor, GFF57AA, SEBERIA, Hermetic, Compressor GFF57AA, LBP, R134a, Disp.5.7cc, 1/5HP, Series, LBP

COMPRESSOR, EMBRACO, 1/4 HP++ (big), 220V, R134A, EGAS 80HLR, FREEZER MOTOR

Category: compressor

written by www.mbsm.pro | 19 December 2021

Technical Specifications

Brand	Embraco
Production place	Brazil
Compressor Type	Hermetic Piston
Compression Line	1/4 "
Working Regime	LBP (-23,3 ° C / + 54,4 ° C)
Frequency (Hz)	50-60
Suction Line	5/16 "
Cooling Capacity (Watts)	195
good kudu	51370117399RA
Compressor Model	EGAS80HLR
Piston Diameter (cm3/rev)	6.36
Tipi Motorcycle	1FAZ - RSIR
Refrigerant Gas	R134a
Compressor Power(Hp)	1/4 +



Private Picture Copyright : WWW.MBSM.PRO

#mbsmpro

TECHNICAL SPECIFICATIONS

- Voltage: 220V 50 / 60Hz
- Refrigerant: R-134A

- Evaporation temperature range: -35 ° C to -10 ° C
- Power: 1/4 +

Mbsm_dot_pro_private_PDF_pdf_embraco-compressor-egas-80-hlrTélécharger

Technical Specifications

Brand	Embraco
Production place	Brazil
Compressor Type	Hermetic Piston
Compression Line	1/4 "
Working Regime	LBP (-23,3 ° C / + 54,4 ° C)
Frequency (Hz)	50-60
Suction Line	5/16 "
Cooling Capacity (Watts)	195
good kodu	51370117399RA
Compressor Model	EGAS80HLR
Piston Diameter (cm3/rev)	6.36
Tipi Motorcycle	1 FAZ - RSIR
Refrigerant Gas	R134a
Compressor Power(Hp)	1/4 +



Private Picture Copyright : WWW.MBSM.PRO



Private Picture Copyright : WWW.MBSM.PRO

Compressor, Embraco, EMX20CLC, High-quality, compressor Aspera, EMX20CLC, LBP R600a, 220-240V 50Hz, 3.97 cm3, 1/12HP

Category: compressor

written by www.mbsm.pro | 19 December 2021

Model **EMX20CLC**

Code 513309529...S

embraco POWER IN.
CHANGE ON.

220V 60 1~



MECHANICAL DATA

Bore: 19 mm
Stroke: 14 mm
Oil Charge: 180ml
Oil Type Configuration: ALQUILB
Oil Type Viscosity: ISO5
Weight: 7.88 kg

GENERAL DATA

Application: LBP
Refrigerant: R600a
Evaporating Temperature Range: -35°C to -10°C
Compressor Cooling: Static
Type: Hermetic reciprocating
Technology Type: On-Off
Expansion Device: Capillary Tube
Packing Quantity: 100
Displacement: 3.97 cm³
Horse power: 1/12 hp
Approvals:

ELECTRICAL DATA

Motor Type: RSCR
Starting Torque: LST
Voltage working range at 50 Hz: 198-242 V
Voltage working range at 60 Hz: 198-242 V
Maximum Motor Temperature: 130 °C
Start Winding Resistance: 22.1 Ω (± 10%) at 25°C
Run Winding Resistance: 50.65 Ω (± 10%) at 25°C



Private Picture Copyright : WWW.MBSM.PRO

GENERAL DATA

Application: LBP
Refrigerant: R600a
Evaporating Temperature Range: -35°C to -10°C
Compressor Cooling: Static
Type: Hermetic reciprocating
Technology Type: On-Off
Expansion Device: Capillary Tube
Packing Quantity: 100
Displacement: 3.97 cm³
Horse power: 1/12 hp
Approvals:

MECHANICAL DATA

Bore: 19 mm
Stroke: 14 mm
Oil Charge: 180ml
Oil Type Configuration: ALQUILB
Oil Type Viscosity: ISO5
Weight: 7.88 kg

ELECTRICAL DATA

Motor Type: RSCR
Starting Torque: LST
Voltage working range at 50 Hz: 198-242 V
Voltage working range at 60 Hz: 198-242 V
Maximum Motor Temperature: 130 °C
Start Winding Resistance: 22.1 Ω (± 10%) at 25°C
Run Winding Resistance: 50.65 Ω (± 10%) at 25°C

Model **EMX20CLC**

Code 513309529...S

embraco POWER IN.
CHANGE ON.

220V 60 1~



GENERAL DATA

Application: LBP
Refrigerant: R600a
Evaporating Temperature Range: -35°C to -10°C
Compressor Cooling: Static
Type: Hermetic reciprocating
Technology Type: On-Off
Expansion Device: Capillary Tube
Packing Quantity: 100
Displacement: 3.97 cm³
Horse power: 1/12 hp
Approvals:



MECHANICAL DATA

Bore: 19 mm
Stroke: 14 mm
Oil Charge: 180ml
Oil Type Configuration: ALQUILB
Oil Type Viscosity: ISO5
Weight: 7.88 kg

ELECTRICAL DATA

Motor Type: RSCR
Starting Torque: LST
Voltage working range at 50 Hz: 198-242 V
Voltage working range at 60 Hz: 198-242 V
Maximum Motor Temperature: 130 °C
Start Winding Resistance: 22.1 Ω (± 10%) at 25°C
Run Winding Resistance: 50.65 Ω (± 10%) at 25°C

Private Picture Copyright: WWW.MBSM.PRO



Private Picture Copyright: WWW.MBSM.PRO

Mbsm_dot_pro_private_PDF_EMX20CLC_techTélécharger

Bitzer, Compressor, S6F-30.2Y-40P,
Compressor Selection, Semi-hermetic
Reciprocating, 1450 min-1 , 101,1

(LP) , 30hp

Category: compressor

written by www.mbsm.pro | 19 December 2021



Type S6F-30.2Y-40P

S.No. 1600308267

BITZER KÜHLMASCHINENBAU GMBH
Made in Germany



Nominal Voltage V 3Ph~	Frequ. Hz	Operat. C. A (max.)	Locked Rotor C.		Displacem. m³/h	Speed RPM
			A (Y)	A (YY)		
380-420	50	51	135	220	101,4	1450
440-480	60	51	135	220	122	1750

IP 54 LP/HP max. 19 / 28 bar



BITZER is raising the bar in terms of technology and capacity for expanded low temperature applications with the 2nd generation of 2-stage compressors. This series is the result of extensive research on the basis of years of experience in the construction of highly efficient and solid reciprocating compressors. The gas flow control and working valves are specially adapted for low temperature applications.

- Displacement at 1450 min⁻¹ : 101,1 (LP) 50,5 (HP)
- Number of cylinders : 6
- Oilcharge : 4,75 dm³

Displacement (1450 RPM 50Hz):101.10 / 50.50 m³/h Displacement (1750 RPM 60Hz):122.02 / 60.95 m³/h

The Bitzer Compressor is high quality!

Displacement (1450 RPM 50Hz):101.10 / 50.50 m³/h

Displacement (1750 RPM 60Hz):122.02 / 60.95 m³/h

No. of cylinder x bore LP/HP x stroke:6+6 x 82/ 82 mm x 55 mm

Max. pressure (LP/MP/HP):19 / 19 / 28 bar

Connection suction line:42 mm – 1 5/8 inch

Connection discharge line:35 mm – 1 3/8 inch

Oil type R404A/R507A:BSE32 (Standard)

Oil type R448A/R449A:BSE32 (Standard)

Oil type R22:B5.2 (Option) We can also provide the following models

4JTE-15K

GYD80485VAYB4

GED60235VLB332

GMD60137VBYR632

GED60485VBYR3-1

CSH7573-70Y-40P

GYD80182VLYB632

GYD60385VLYR2-2

GED80154VLR332

GYU80295VLR4-2

GSU60120VLB6-2

GED60137VAYB3-1

GUU60154VLR532

GUD80295VLR232

GSD80295VLR6-1

GTU60137VLYB3-1

GUD60137VBYR5-1

GYD80235VBYB332

GYD60421VAYR332

GMD60295VBR3-1

GED80154VBYB6

4NEH-14-40S

GMU60154VLY

GYD60154VAB4-2

GYD80182VAYR4-2

GYD80421VBR5-1

GYD60385VLYR4-1

4TE-9.F3Y-40S

GMD60182VBYB3-2

GMD80120VLR232
 GUD60120VBYR5-2
 GSD60154VAYR232
 GMD60154VBYR632
 44EES-12-40S
 GMD60154VBB432
 GUD80421VWR4-2
 GYD80385VAYR2-2
 GTD60385VLB632
 GED60235VLB2
 GED60154VAYR4
 GSD80421VWR5-2
 GUD60421VBR5
 GYD80182VBYB5-1
 GED60295VBB5
 GED80421VAR4-1
 GED60385VLYB3
 GYU80421VLR2
 GSD80485VBB5-1
 GED60120VLB2
 GUD60421VBR332
 GTD60154VAB4-2
 GED60421VAYB6-1
 GMD60485VBB5-1
 GSD60485VAYR4
 GED80295VLYR6-1
 GSD60235VAYB232
 GTD60385VBYR3-1
 GUD60154VBB3-2
 GUD80295VWB6-2
 GED60421VAR5
 GMD80421VBR4
 GED80182VLR532
 GSD60154VBYB6-1
 GTD80421VBYR332
 GSD60182VAYB4-1
 GUD80485VWYR5-2
 GSU80295VLYR6-1
 GSD80182VLYR2-2
 GSU80385VLB432
 GED80295VAY
 GED80295VAB3-2
 GYD60120VAR4

With liquid subcooling 50Hz (R404A/R507A)

Compressor type	Cond. temp. [°C]	Q _o / Pe	Evaporating temperature °C									
			-25	-30	-35	-40	-45	-50	-55	-60	-65	-70
S6F-30.2Y	30	Q _o	43400	37400	31750	26500	21700	17420	13690	10540	7920	5800

Pe	2,53	0,65	8,78	16,94	15,15	13,42	11,77	10,20	8,74	7,40	
35	Qo	42500	36600	31050	25900	21200	17030	13420	10340	7780	5680
Pe	3,85	1,86	9,89	7,94	6,04	4,21	12,45	10,78	9,23	7,80	
40	Qo	41500	35700	30300	25300	20700	16680	13170	10150	7590	
Pe	25,20	23,10	21,01	18,96	16,95	15,00	13,14	11,37	9,72		
45	Qo	40450	34800	29550	24700	20300	1660	12930	9920		
Pe	26,59	24,37	22,16	19,98	17,86	15,80	13,83	11,96			
50	Qo	39500	34000	28850	24100	19870	16060	12650			
Pe	28,07	25,69	23,33	21,01	18,75	6,57	14,49				
55	Qo	38800	33250	28200	23600	19490	15740				
Pe	29,64	27,06	24,51	22,03	19,63	17,32					

Qo – Cooling capacity [Watt], Pe – Power consumption [kW]

Without liquid subcooling 50Hz (R404A/R507A)

Compressor type	Cond. temp. [°C]	Qo / Pe		Evaporating temperature °C								
		-25	-30	-35	-40	-45	-50	-55	-60	-65	-70	
S6F-30.2Y	30	Qo	38050	31700	26050	21000	16620	12880	9790	7280	5300	3760
Pe	1,26	18,81	16,61	14,64	12,90	11,37	10,02	8,86	7,85	7,00		
35	Qo	36000	29950	24500	19710	15570	12070	9180	6840	4980	3510	
Pe	22,11	19,66	17,41	15,37	13,53	11,88	10,42	9,13	8,02	5,72		
40	Qo	33800	28000	22900	18390	14530	11280	8590	6400	4620		
Pe	22,95	20,53	18,26	16,15	14,20	12,42	10,82	9,41	8,18			
45	Qo	31450	26050	21250	17080	13510	10500	8000	5920			
Pe	23,82	21,42	19,12	16,94	14,89	13,00	11,26	9,71				
50	Qo	28950	24000	19590	15770	12490	9710	7370				
Pe	24,72	22,31	19,98	17,74	15,61	13,61	11,76					
55	Qo	26400	21900	17890	14430	11440	8880					
Pe	25,67	23,19	20,80	18,52	16,34	14,27						

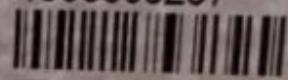
Qo – Cooling capacity [Watt], Pe – Power consumption [kW]



Type S6F-30.2Y-40P

S.No. 1600308267

BITZER KÜHLMASCHINENBAU GMBH
Made in Germany



Nominal Voltage V 3Ph~	Frequ. Hz	Operat. C. A (max.)	Locked Rotor C.		Displacem. m³/h	Speed RPM
			A (Y)	A (YY)		
380-420	50	51	135	220	101,4	1450
440-480	60	51	135	220	122	1750

IP 54 LP/HP max. 19 / 28 bar





Private Picture Copyright : WWW.MBSM.PRO

Mbsm_dot_pro_private_PDF_S6F-30.2Y-40PTélécharger

Compressor type Displacement at 1450 min-1 Number of cylinders Oil charge Weight Pipe connections Motor Max. operating current Max. power consumption Starting

current(lockedrotor)LPHPDLSLdm3KgmpouceAmpkWAm .
Y/YYS6F-30.2Y101,150,567.752343513/842
5415/8
21/8380 ..420YY/3/50
440 ..480 YY/3/605131,9135/220