

Compressor ,Embraco Aspera ,NJ2212GK,  
LBP – R404A, R507, 220-240V/1/50Hz,  
1.5 HP, 34.38 cm<sup>3</sup>, LRA 36.0 A, CSR,  
lubricant charge 750ml POE 22, 1547 W  
,at -23.3 / +54.4 °

Category: Technologie,Tester ok  
written by www.mbsm.pro | 9 May 2020



Private Picture Copyright : WWW.MBSM.PRO

Compressor ,Embraco Aspera ,NJ2212GK, LBP – R404A, R507, 220-240V/1/50Hz, 1.5  
HP, 34.38 cm<sup>3</sup>, LRA 36.0 A, CSR, lubricant charge 750ml POE 22, 1547 W ,at -23.3  
/ +54.4 °

Compresseur, d'entreposage au froid,  
de congélateur , Sc12g , Secop  
,Certification CE ,1/3 puissance ,en  
chevaux ,de mini type réfrigérateur  
,R134 ,Danfos

Category: Technologie,Tester ok  
written by www.mbsm.pro | 9 May 2020

| Non | Modèle | HP   | La température | L'électricité | Réfrigérant |
|-----|--------|------|----------------|---------------|-------------|
| 1   | SC10C  | 1/3  | LBP            | 220~240V/50HZ | R22         |
| 2   | SC12C  | 3/8  | LBP            | 220~240V/50HZ | R22         |
| 3   | SC15CM | 1/2  | LBP            | 220~240V/50HZ | R22         |
| 4   | SC18CM | 5/8  | LBP            | 220~240V/50HZ | R22         |
| 5   | SC10D  | 3/8  | MBP            | 220~240V/50HZ | R22         |
| 6   | SC12D  | 1/2  | MBP            | 220~240V/50HZ | R22         |
| 7   | SC15D  | 5/8  | MBP            | 220~240V/50HZ | R22         |
| 8   | SC10G  | 5/16 | MBP            | 220~240V/50HZ | R22         |
| 9   | SC12G  | 1/3  | MBP            | 220~240V/50HZ | R134A       |
| 10  | SC15G  | 3/8  | MBP            | 220~240V/50HZ | R134A       |
| 11  | SC18G  | 1/2  | MBP            | 220~240V/50HZ | R134A       |
| 12  | SC21G  | 5/8  | MBP            | 220~240V/50HZ | R134A       |
| 13  | SC10CL | 1/3  | LBP            | 220~240V/50HZ | R404a       |
| 14  | SC12CL | 3/8  | LBP            | 220~240V/50HZ | R404a       |
| 15  | SC15CL | 1/2  | LBP            | 220~240V/50HZ | R404a       |
| 16  | SC18CL | 5/8  | LBP            | 220~240V/50HZ | R404a       |
| 17  | SC21CL | 7/8  | LBP            | 220~240V/50HZ | R404a       |

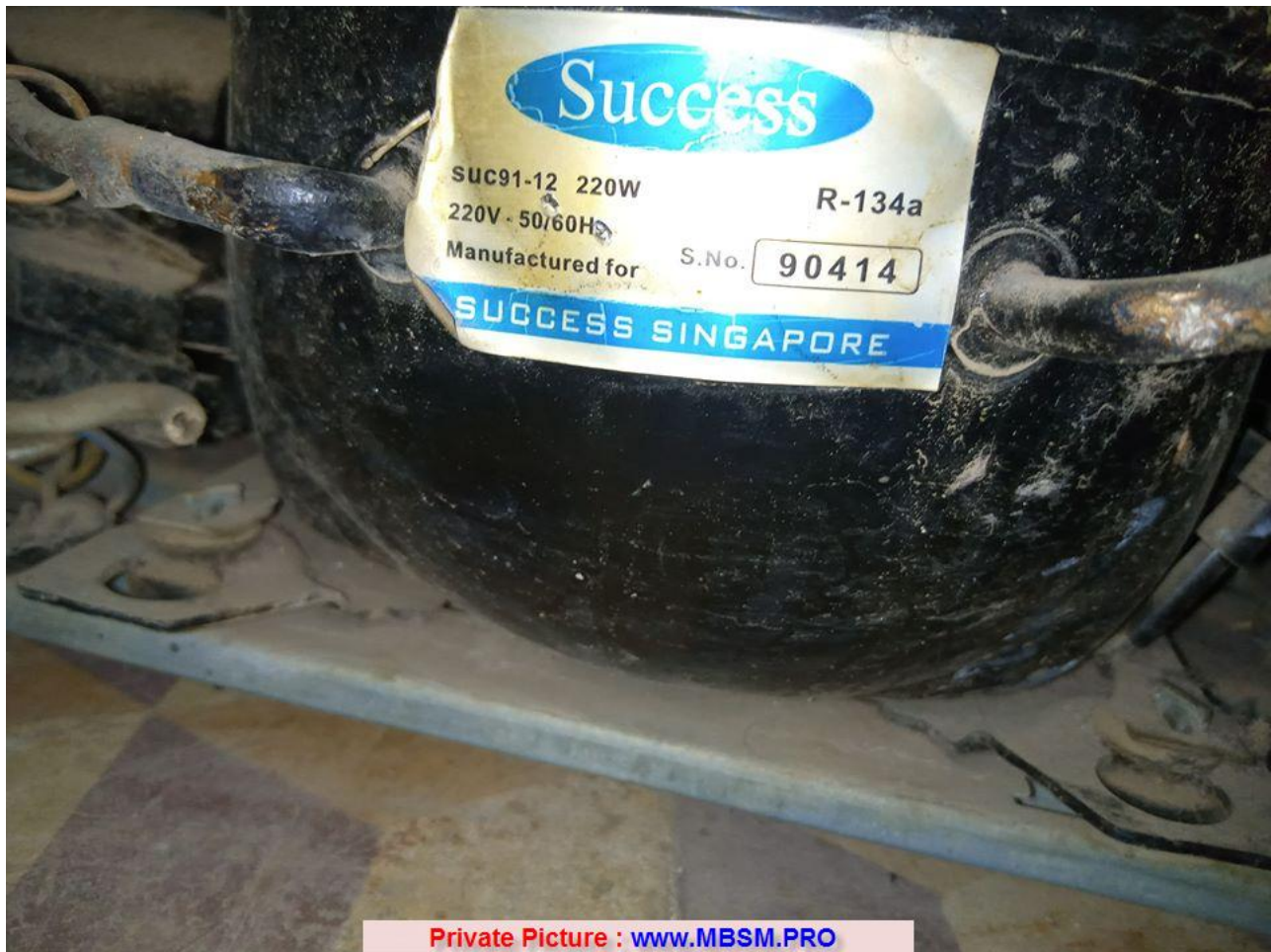
Private Picture : [www.MBSM.PRO](http://www.MBSM.PRO)

Compresseur, d'entreposage au froid, de congélateur , Sc12g , Secop , Certification CE , 1/3 puissance , en chevaux , de mini type réfrigérateur , de R134 Danfos

---

**SUC91-12 , Compresseur , 220 w , 1/4 HP , HBP , or 1/3 HP , R134a**

Category: Technologie, Tester ok  
written by [www.mbsm.pro](http://www.mbsm.pro) | 9 May 2020



Private Picture : [www.MBSM.PRO](http://www.MBSM.PRO)

SUC91-12 ,Compresseur ,220 w , 1/4 HP , HBP, or 1/3 HP

---

Compresseur, Samsung , 1/5 HP,  
155/160w , r600a , 220/240v~50,  
Mk4a5qr1u, Mk4a5q-R1u, 5.5Lra, 1PHASE

Category: Technologie, Tester ok  
written by [www.mbsm.pro](http://www.mbsm.pro) | 9 May 2020



Private Picture : [www.MBSM.PRO](http://www.MBSM.PRO)

Compresseur, Samsung , 1/5 HP, 155/160w , r600a ,220/240v~50, Mk4a5qr1u, Mk4a5q-R1u, 5.5Lra, 1PHASE

Compresseur Embraco ,Aspera,  
nbm1118y, nby1118y ,coolant ,R600a  
,NBY1118Y ,220-240V 50Hz, LBP ,fully  
hermetic, 10,8kg ,1/4HP

Category: Technologie,Tester ok  
written by [www.mbsm.pro](http://www.mbsm.pro) | 9 May 2020



**Embraco®**

**NBY1118Y**



|                     |        |               |
|---------------------|--------|---------------|
| THERMALLY PROTECTED |        | 220-240V~50Hz |
|                     | R 600a |               |
| MIN. OIL 280CC      |        | 1 PH          |

SUCTION →

SKM

NO START WITHOUT STARTING DEVICE



816BA42

19/AUG/08

PA8HQHBL

Private Picture : [www.MBSM.PRO](http://www.MBSM.PRO)

ompresseur Embraco ,Aspera, nbm1118y, nby1118y ,coolant ,R600a ,NBY1118Y ,220-240V 50Hz, LBP ,fully hermetic, 10,8kg ,1/4HP,nbt1118y

MTS 185 MT,S224-20 ,TURK ELEKTRIK  
,1/4 HP,LBP , R600a ,Lra 13.9AMP  
,194/220VAC 50Hs , 170w

Category: Technologie,Tester ok  
written by www.mbsm.pro | 9 May 2020



Private Picture Copyright : [WWW.MBSM.PRO](http://WWW.MBSM.PRO)

MTS 185 MT,S224-20 ,TURK ELEKTRIK ,1/4 HP,LBP , R600a ,Lra 13.9AMP ,194/220VAC  
50Hs



Private Picture Copyright : [WWW.MBSM.PRO](http://WWW.MBSM.PRO)

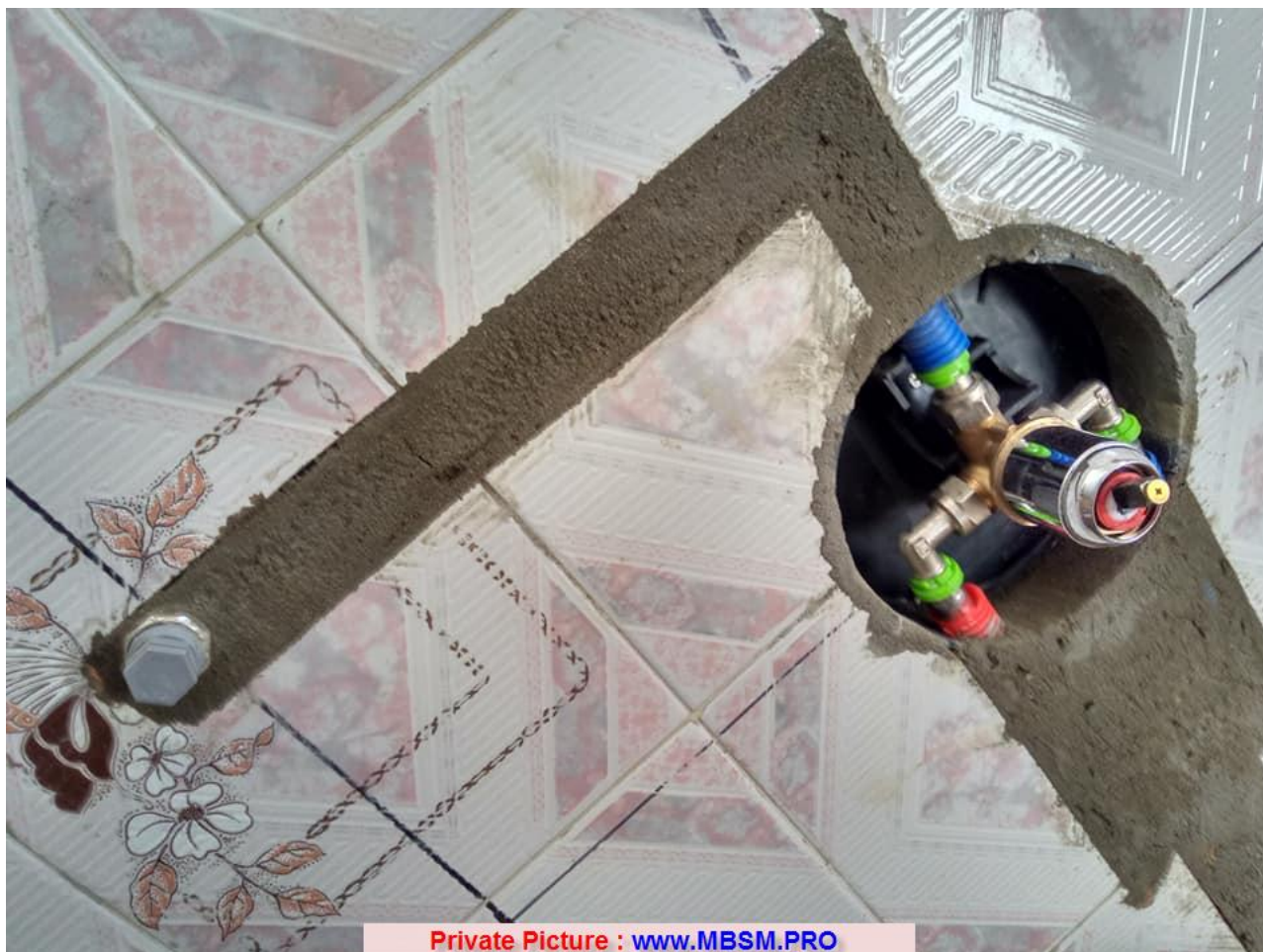


Private Picture : [www.MBSM.PRO](http://www.MBSM.PRO)



## PICTURES : Jeux mitigeurs encastrée ,pour une salle d'eau

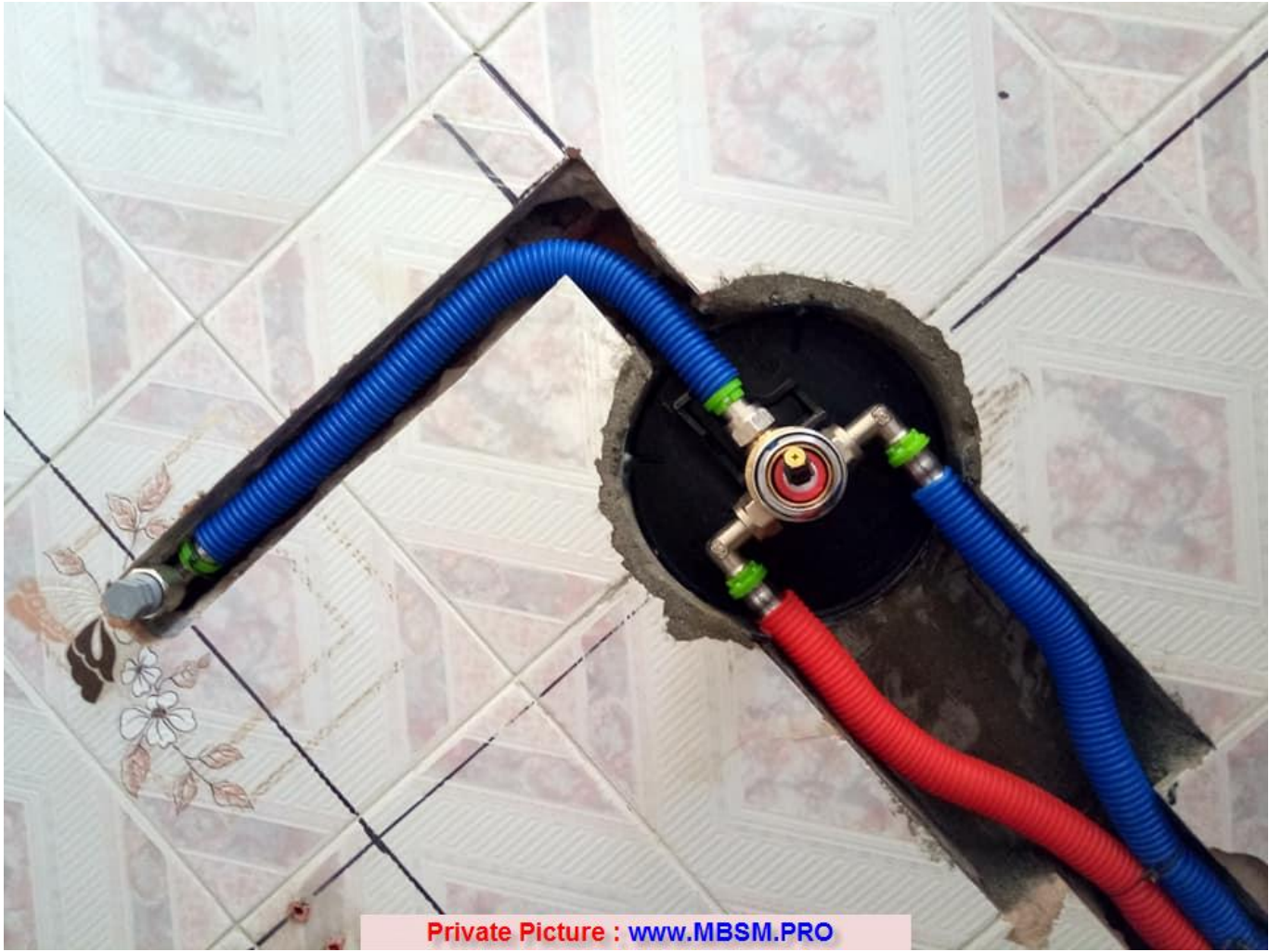
Category: Non classé,Plomberie  
written by [www.mbsm.pro](http://www.mbsm.pro) | 9 May 2020



IMAGES FACEBOOK

## Les artistes de plomberie et chauffage central

Robinet *Salle de Bain* Matériel: en cuivre. Fonctionnement silencieux. Fonction: mélange d'eau chaude et d'eau froide; Mitigeur monocommande



Private Picture : [www.MBSM.PRO](http://www.MBSM.PRO)



Private Picture : [www.MBSM.PRO](http://www.MBSM.PRO)

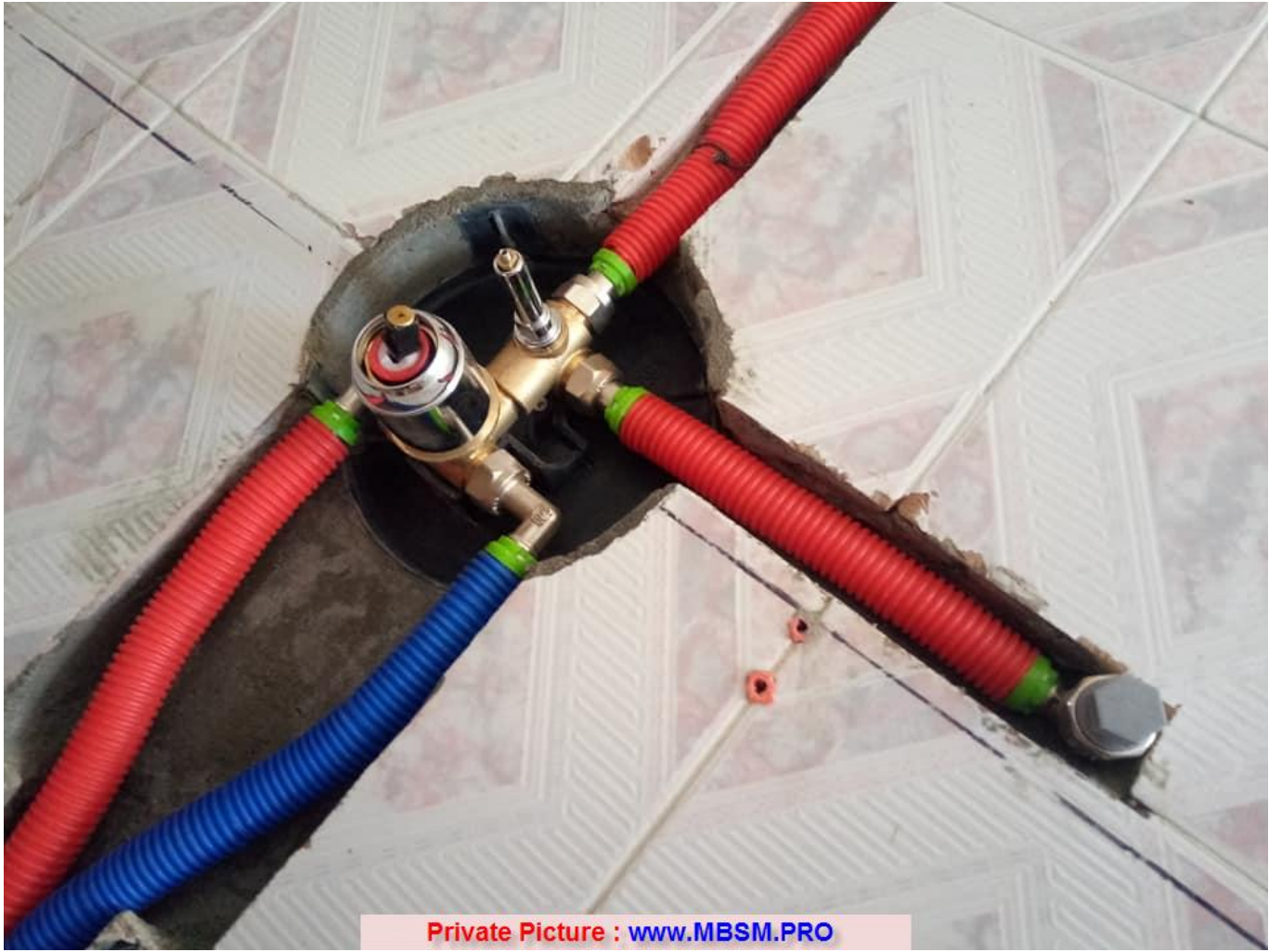


Private Picture : [www.MBSM.PRO](http://www.MBSM.PRO)

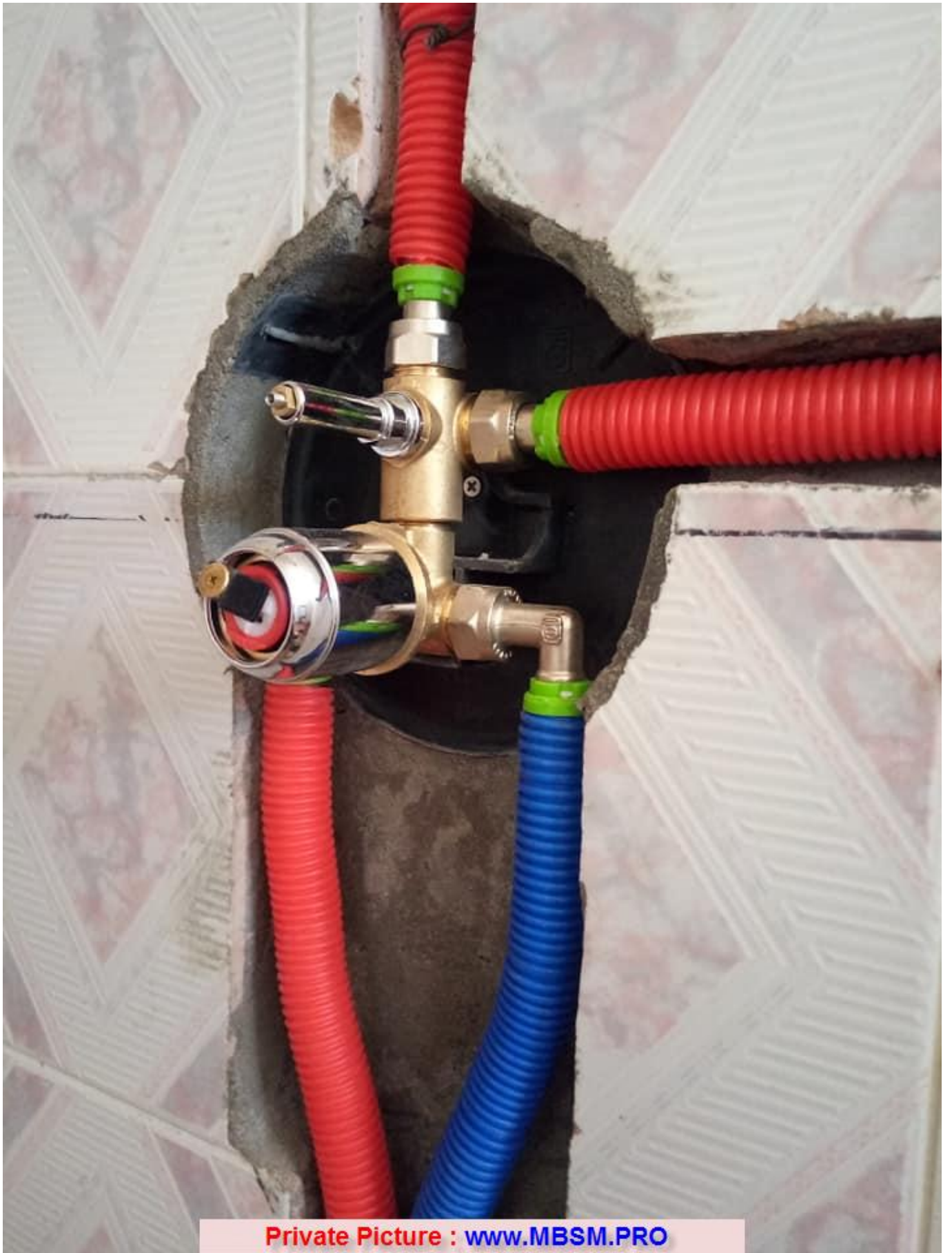




Private Picture : [www.MBSM.PRO](http://www.MBSM.PRO)



Private Picture : [www.MBSM.PRO](http://www.MBSM.PRO)



Private Picture : [www.MBSM.PRO](http://www.MBSM.PRO)



Private Picture : [www.MBSM.PRO](http://www.MBSM.PRO)



Private Picture : [www.MBSM.PRO](http://www.MBSM.PRO)



## Tecumseh , CAJ4511A ,Compressor , 1 HP, 208-230V, 1 PHASE, R12, Hermetic ,Reciprocating Compressor Replacement

Category: Technologie,Tester ok  
written by [www.mbsm.pro](http://www.mbsm.pro) | 9 May 2020



Private Picture : [www.MBSM.PRO](http://www.MBSM.PRO)

Tecumseh , CAJ4511A ,Compressor , 1 HP, 208-230V, 1 PHASE, R12, Hermetic ,Reciprocating Compressor Replacement

# Good quality Reciprocating Compressor , MSS151G-L1U ,R134a ,LBP ,AC 220-240V~50Hz, 1/8 HP ,90w ,Samsung

Category: Technologie,Tester ok  
written by [www.mbsm.pro](http://www.mbsm.pro) | 9 May 2020



Private Picture : [www.MBSM.PRO](http://www.MBSM.PRO)

Good quality Reciprocating Compressor , MSS151G-L1U ,R134a ,LBP ,AC  
220-240V~50Hz, 1/8 HP ,90w ,Samsung

---

Compressor ,ACC Cubigel ,Huayi  
Electrolux ,ZEM GL80AA / GVY75AA, LBP  
– R134a, 220 – 240V/1/50Hz, 1/4 HP,  
discharge 7.52 cm<sup>3</sup>, motor type RSIR /  
RSCR, oil type ester, oil charge 180  
cm<sup>3</sup>, 150 W at -25 / +55 °, input

power, current 146 W, 1.16 A,  
 expansion device: capillary, cooling:  
 static, weight 8.6 kg

Category: Technologie, Tester ok  
 written by www.mbsm.pro | 9 May 2020

|  |  |   |  |   |  |  |  |   |  |   |  |
|--|--|---|--|---|--|--|--|---|--|---|--|
|  |  | ORIGINAL INSTRUCTIONS MANUAL / MANUAL DE INSTRUCCIONES ORIGINAL / MANUALE D'ISTRUZIONI ORIGINALE /<br>MANUAL D'INSTRUCTIONS ORIGINAL / ORIGINALES ANWEISUNGEN - HANDBUCH /<br>Оригинальное руководство по эксплуатации / 原版操作規程 |  | RANGE / GAMA / GAMMA / GAMME /<br>BAUREIHE / ДИАПАЗОН / 系列<br>"D"/"L"/"P"/"S"/"X"   |  |  |  |   |  |   |  |
|  |  |   |  |   |  |  |  |   |  |   |  |
| EXTERNAL CONNECTING BOX / CAJAS CONEXIONES / SCATOLE CONNESSIONI / BOÎTIER ELECTRIQUE /<br>EXTERNE ELEKTRIKBOJ / внешняя клемная коробка / 外置接线盒   |  |   |  |   |  |  |  |   |  |   |  |
|  |  |   |  |   |  |  |  |   |  |   |  |
| <table border="0"> <tr> <td> <b>ENGLISH</b><br/>                     1-Compressor<br/>2-Overload<br/>3-PTC<br/>4-Relay<br/>5-Start capacitor<br/>6-Run capacitor<br/>7-Thermostat<br/>8-Earth connection                 </td> <td> <b>ITALIANO</b><br/>                     1-Compressore<br/>2-Protettore<br/>3-PTC<br/>4-Relè<br/>5-Condens. avviamento<br/>6-Condens. permanente<br/>7-Termistato<br/>8-Terza                 </td> <td> <b>FRANCAIS</b><br/>                     1-Blanc<br/>2-Blanc<br/>3-Blanc<br/>4-Vert<br/>5-Condens. démarrage<br/>6-Condens. permanent<br/>7-Thermostat<br/>8-Terça                 </td> <td> <b>DEUTSCH</b><br/>                     1-Kompressor<br/>2-Überlastschutz<br/>3-PTC<br/>4-Relais<br/>5-Auflaufkondensator<br/>6-Betriebskondensator<br/>7-Thermostat<br/>8-Erdschluss                 </td> <td> <b>РУССКИЙ</b><br/>                     1-Компрессор<br/>2-Воздушная<br/>3-PTC резистор<br/>4-Желто-зеленый<br/>5-Желтый конденсатор<br/>6-Термостат<br/>7-Термостат<br/>8-Земля                 </td> <td> <b>中文</b><br/>                     1-压缩机<br/>2-过载保护器<br/>3-启动器<br/>4-继电器<br/>5-启动电容<br/>6-运行电容<br/>7-温控器<br/>8-接地                 </td> </tr> </table> |  |   |  |   |  | <b>ENGLISH</b><br>1-Compressor<br>2-Overload<br>3-PTC<br>4-Relay<br>5-Start capacitor<br>6-Run capacitor<br>7-Thermostat<br>8-Earth connection | <b>ITALIANO</b><br>1-Compressore<br>2-Protettore<br>3-PTC<br>4-Relè<br>5-Condens. avviamento<br>6-Condens. permanente<br>7-Termistato<br>8-Terza | <b>FRANCAIS</b><br>1-Blanc<br>2-Blanc<br>3-Blanc<br>4-Vert<br>5-Condens. démarrage<br>6-Condens. permanent<br>7-Thermostat<br>8-Terça | <b>DEUTSCH</b><br>1-Kompressor<br>2-Überlastschutz<br>3-PTC<br>4-Relais<br>5-Auflaufkondensator<br>6-Betriebskondensator<br>7-Thermostat<br>8-Erdschluss | <b>РУССКИЙ</b><br>1-Компрессор<br>2-Воздушная<br>3-PTC резистор<br>4-Желто-зеленый<br>5-Желтый конденсатор<br>6-Термостат<br>7-Термостат<br>8-Земля | <b>中文</b><br>1-压缩机<br>2-过载保护器<br>3-启动器<br>4-继电器<br>5-启动电容<br>6-运行电容<br>7-温控器<br>8-接地 |
| <b>ENGLISH</b><br>1-Compressor<br>2-Overload<br>3-PTC<br>4-Relay<br>5-Start capacitor<br>6-Run capacitor<br>7-Thermostat<br>8-Earth connection   | <b>ITALIANO</b><br>1-Compressore<br>2-Protettore<br>3-PTC<br>4-Relè<br>5-Condens. avviamento<br>6-Condens. permanente<br>7-Termistato<br>8-Terza | <b>FRANCAIS</b><br>1-Blanc<br>2-Blanc<br>3-Blanc<br>4-Vert<br>5-Condens. démarrage<br>6-Condens. permanent<br>7-Thermostat<br>8-Terça   | <b>DEUTSCH</b><br>1-Kompressor<br>2-Überlastschutz<br>3-PTC<br>4-Relais<br>5-Auflaufkondensator<br>6-Betriebskondensator<br>7-Thermostat<br>8-Erdschluss | <b>РУССКИЙ</b><br>1-Компрессор<br>2-Воздушная<br>3-PTC резистор<br>4-Желто-зеленый<br>5-Желтый конденсатор<br>6-Термостат<br>7-Термостат<br>8-Земля | <b>中文</b><br>1-压缩机<br>2-过载保护器<br>3-启动器<br>4-继电器<br>5-启动电容<br>6-运行电容<br>7-温控器<br>8-接地 |  |  |   |  |   |  |

Private Picture : [www.MBSM.PRO](http://www.MBSM.PRO)

visit our web site [www.cubigel.com](http://www.cubigel.com)

02/2010 1164133

Compressor ,ACC Cubigel ,Huayi Electrolux ,ZEM GL80AA / GUY75AA, LBP – R134a,  
 220 – 240V/1/50Hz, 1/5 HP, discharge 7.52 cm<sup>3</sup>, motor type RSIR / RSCR, oil type  
 ester, oil charge 180 cm<sup>3</sup>, 150 W at -25 / +55 °, input power, current 146 W,  
 1.16 A, expansion device: capillary, cooling: static, weight 8.6 kg