

Compressor Bpm111z , r134a 1/6hp ,5.6cc, 240v 50hz ,ASPERA, EMBRACO

Category: Technologie,Tester ok
written by www.mbsm.pro | 19 April 2020





PictureS Mbsm Dot Pro : www.mbsm.pro

Compressor Bpm111z , r134a 1/6hp ,5.6cc, 240v 50hz ,ASPERA, EMBRACO

TLES6.5FT.3 ,Energy-optimized
,Tropical , R134a 220-240V ,50Hz ,
1/4 hp , COMPRESOR DANFOSS SECOP ,
183 W , LBP

Category: Technologie,Tester ok
written by www.mbsm.pro | 19 April 2020



Private Picture Copyright : WWW.MBSM.PRO

TLES6.5FT.3 ,Energy-optimized ,Tropical , R134a 220-240V ,50Hz , 1/4 hp ,
COMPRESOR DANFOSS SECOP

High Efficiency Refrigerator , Compressor , Lbp , QD65H , 1/5HP , 60Hz , 6.5CC, 185W , R134a , LBP Piston Reciprocating

Category: Technologie, Tester ok
written by www.mbsm.pro | 19 April 2020



Picture5 Mbsm Dot Pro : www.mbsm.pro

High Efficiency Refrigerator , Compressor , Lbp , QD65H , 1/5HP 60Hz 6.5CC 185W

QD110H , Chest Freezer Compressor

,1/3HP ,220V/50Hz ,R134A

Category: Technologie,Tester ok
written by www.mbsm.pro | 19 April 2020



PictureS Mbsm Dot Pro : www.mbsm.pro

1/3HP Refrigeration Compressor 220V/50Hz R134A
AC Compressor: R134A Hermetic LBP Piston Reciprocating Compressor

Model: WQ110H
Power Supply: 220-240/50-60V/Hz
Displacement: 11CC
Nominal Power: 1/3HP
Rated Power: 233W
Cooling Capacity: 280W
COP: 1.20W/W
Motor Type: RSIR
Starting relay: Starting Relay/PTC
Starting Capacitor: / μ F
Running Capacitor: / μ F
Cooling Type: F
Application: LBP
Certificate: 3C
1X20'FCL: 1600PCS



PictureS Mbsm Dot Pro : www.mbsm.pro

Application:

LBP: Low back pressure; Refrigerator, Freezer, Wine cooler

MBP: Medium Back Pressure; Air-conditioner, vending machine

HBP: High Back Pressure: Air-conditioner, ice maker

LBP ASHRAE Test Condition:

Evaporation Temperature: -23.3 °C

Condensing Temperature: 54.4 °C

Subcooling Temperature: 32.2 °C

Ambient Temperature: 32.2 °C

MBP ASHRAE Test condition:

Evaporation Temperature: -5 °C

Condensing Temperature: 54.4 °C

Ambient Temperature: 35 °C

Subcooling Temperature: 46.1

Suction Temperature: 35 °C

HBP ASHRAE Test condition:

Evaporation Temperature: 7.2°C

Condensing Temperature: 54.4°C

Ambient Temperature: 35°C

Subcooling Temperature: 46.1°C

Suction Temperature: 35°C

Parameter Variation Range:

Cooling Capacity: ≥ 95%

Input Power: ≤ 115%

Current: ≤ 110%

COP: ≥ 95%

Cooling Type:

S: Natural cooling

F1: Fan cooling, 200mm fan diameter, 1.5m/s air speed

F2: Fan cooling, 200mm fan diameter, 3m/s air speed

HPL25YE-5-K , DAEWOO COMPRESSOR , FOR REFRIGERATOR , 1/4 Hp , 220/240 V , R134A

Category: Technologie, Tester ok

written by www.mbsm.pro | 19 April 2020



OPPO F11 Pro

Private Picture Copyright : WWW.MBSM.PRO

HPL25YE-5-K , DAEWOO COMPRESSOR ,FOR REFRIGERATOR ,1/4 Hp , 220/240 V , R134A

Choice Of Capillary , EMBARACO ASPERA

Category: Tester ok

written by www.mbsm.pro | 19 April 2020

R 290 - R 404A - R 507 - MBP Applications			
COMPRESSOR	FREQUENCY	DIMENSION	
		(from -20°C to -5°C evap. temp.)	(from -5°C to +15°C evap. temp.)
T6220GK	50 Hz	1.37 mm I.D. × 1.90 m	1.37 mm I.D. × 1.50 m
NT6220U - NT6220GK	60 Hz	1.37 mm I.D. × 1.65 m	1.63 mm I.D. × 1.75 m
T6222GK	50 Hz	1.37 mm I.D. × 1.60 m	1.63 mm I.D. × 1.70 m
NT6222U - NT6222GK	60 Hz	1.63 mm I.D. × 2.85 m	1.63 mm I.D. × 1.55 m
NJ9226GK	50 Hz	1.63 mm I.D. × 2.75 m	1.63 mm I.D. × 1.60 m
NT6224U - NT6226GK	60 Hz	1.63 mm I.D. × 2.35 m	1.90 mm I.D. × 1.80 m
NJ9232GK	50 Hz	1.90 mm I.D. × 2.65 m	2.16 mm I.D. × 2.05 m
	60 Hz	1.90 mm I.D. × 2.00 m	2.16 mm I.D. × 1.60 m
NJ9232GK	50 Hz	2.16 mm I.D. × 2.45 m	2×1.63 mm I.D. × 1.70 m
	60 Hz	2.16 mm I.D. × 2.00 m	2.16 mm I.D. × 1.60 m

R 290 - R 404A - R 507 - MBP Applications

COMPRESSOR	FREQUENCY	DIMENSION	
		(from -20°C to -5°C evap. temp.)	(from -5°C to +15°C evap. temp.)
T6220GK NT6220U - NT6220GK	50 Hz	1.37 mm I.D. × 1.90 m	1.37 mm I.D. × 1.50 m
	60 Hz	1.37 mm I.D. × 1.65 m	1.63 mm I.D. × 1.75 m
T6222GK NT6222U - NT6222GK	50 Hz	1.37 mm I.D. × 1.60 m	1.63 mm I.D. × 1.70 m
	60 Hz	1.63 mm I.D. × 2.85 m	1.63 mm I.D. × 1.55 m
NJ9226GK NT6224U - NT6226GK	50 Hz	1.63 mm I.D. × 2.75 m	1.63 mm I.D. × 1.60 m
	60 Hz	1.63 mm I.D. × 2.35 m	1.90 mm I.D. × 1.80 m
NJ9232GK	50 Hz	1.90 mm I.D. × 2.65 m	2.16 mm I.D. × 2.05 m
	60 Hz	1.90 mm I.D. × 2.00 m	2.16 mm I.D. × 1.60 m
	50 Hz	2.16 mm I.D. × 2.45 m	2×1.63 mm I.D. × 1.70 m

PictureS Mbsm Dot Pro : www.mbsm.pro

R 290 - R 404A - R 507 - LBP Applications

COMPRESSOR	FREQUENCY	DIMENSION	
		(from -40°C to -10°C evap. temp.)	-
NEK2121U - NEK2125U NE2125GK - NEK2125GK EMT2121U - EMT2125U EMT2125GK - EMT2125GK	50 Hz	0.91 mm I.D. × 4.0 m	-
	60 Hz	0.91 mm I.D. × 3.5 m	-
NEK2130GK - NEK2134GK NE2134GK - NEK2134U	50 Hz	0.91 mm I.D. × 3.0 m	-
	60 Hz	0.91 mm I.D. × 2.65 m	-
T2140GK - NEK2150U	50 Hz	0.91 mm I.D. × 2.7 m	-
	60 Hz	0.91 mm I.D. × 2.4 m	-
T2155GK	50 Hz	1.20 mm I.D. × 4.1 m	-
	60 Hz	1.20 mm I.D. × 3.6 m	-
T2168GK - NT2168GK	50 Hz	1.20 mm I.D. × 3.4 m	-
	60 Hz	1.20 mm I.D. × 3.0 m	-
T2178GK NT2178GK - NT2160U	50 Hz	1.20 mm I.D. × 3.1 m	-
	60 Hz	1.20 mm I.D. × 2.75 m	-
T2180GK NT2180GK - NT2170U	50 Hz	1.20 mm I.D. × 2.9 m	-
	60 Hz	1.20 mm I.D. × 2.55 m	-
NJ2192GK - NJ2192GS NT2192GK - N2180U	50 Hz	1.40 mm I.D. × 3.5 m	-
	60 Hz	1.40 mm I.D. × 3.1 m	-

PictureS Mbsm Dot Pro : www.mbsm.pro

R 290 - R 404A - R 507 - MBP Applications

COMPRESSOR	FREQUENCY	DIMENSION	
		(from -20°C to -5°C evap. temp.)	(from -5°C to +15°C evap. temp.)
T6220GK NT6220U - NT6220GK	50 Hz	1.37 mm I.D. × 1.90 m	1.37 mm I.D. × 1.50 m
	60 Hz	1.37 mm I.D. × 1.65 m	1.63 mm I.D. × 1.75 m
T6222GK NT6222U - NT6222GK	50 Hz	1.37 mm I.D. × 1.60 m	1.63 mm I.D. × 1.70 m
	60 Hz	1.63 mm I.D. × 2.85 m	1.63 mm I.D. × 1.55 m
NJ9226GK NT6224U - NT6226GK	50 Hz	1.63 mm I.D. × 2.75 m	1.63 mm I.D. × 1.60 m
	60 Hz	1.63 mm I.D. × 2.35 m	1.90 mm I.D. × 1.80 m
NJ9232GK	50 Hz	1.90 mm I.D. × 2.65 m	2.16 mm I.D. × 2.05 m
	60 Hz	1.90 mm I.D. × 2.00 m	2.16 mm I.D. × 1.60 m
	50 Hz	2.16 mm I.D. × 2.45 m	2×1.63 mm I.D. × 1.70 m

PictureS Mbsm Dot Pro : www.mbsm.pro

R 600a - LBP Applications

COMPRESSOR	FREQUENCY	DIMENSION	
		(from -30°C to -15°C evap. temp.)	(from -15°C to -5°C evap. temp.)
EMU26CLC	50 Hz	0.66 mm I.D. × 4.00 m	0.66 mm I.D. × 3.45 m
EMT26CLP	50 Hz	0.66 mm I.D. × 3.80 m	0.66 mm I.D. × 3.30 m
EMU32CLC	50 Hz	0.66 mm I.D. × 3.60 m	0.78 mm I.D. × 3.60 m
EMT32CLP	50 Hz	0.78 mm I.D. × 3.60 m	0.91 mm I.D. × 3.60 m
EMT40CLP-EMU40CLC	50 Hz	0.78 mm I.D. × 3.50 m	0.91 mm I.D. × 3.50 m
NBM1112Y - NBT1112Y NBU1112Y	50 Hz	0.78 mm I.D. × 3.40 m	0.91 mm I.D. × 3.40 m
EMT45CLP - EMU46CLC			
NBM1114Y - NBU1114Y NBT1114Y - EMT56CLP	50 Hz	0.78 mm I.D. × 3.20m	0.91 mm I.D. × 3.20 m
NBK1116Y - NBU1116Y NBT1116Y	50 Hz	0.78 mm I.D. × 3.00 m	0.91 mm I.D. × 3.00 m
NBK1118Y - NBU1118Y	50 Hz	0.91 mm I.D. × 3.60 m	1.06 mm I.D. × 3.60 m

PictureS Mbsm Dot Pro : www.mbsm.pro

R134a - LBP Applications

COMPRESSOR	FREQUENCY	DIMENSION	
		(from -30°C to -15°C evap. temp.)	(from -15°C to -5°C evap. temp.)
EMT22H	50 Hz	0.61 mm I.D. × 4.0 m	0.61 mm I.D. × 3.5 m
EMT36H	50 Hz	0.78 mm I.D. × 4.0 m	0.91 mm I.D. × 4.0 m
EMT43H	50 Hz	0.78 mm I.D. × 3.7 m	0.91 mm I.D. × 3.7 m
EMT49H	50 Hz	0.78 mm I.D. × 3.5 m	0.91 mm I.D. × 3.5 m
NB2116Z - NB1116Z - EMT60H	50 Hz	0.78 mm I.D. × 3.3 m	0.91 mm I.D. × 3.3 m
	60 Hz	0.78 mm I.D. × 2.75 m	0.91 mm I.D. × 2.75 m
NB 1118Z - NB1118Z	50 Hz	0.91 mm I.D. × 4.0 m	1.06 mm I.D. × 4.0 m

PictureS Mbsm Dot Pro : www.mbsm.pro

R 290 - R 404A - R 507 - MBP Applications

COMPRESSOR	FREQUENCY	DIMENSION	
		(from -20°C to -5°C evap. temp.)	(from -5°C to +15°C evap. temp.)
NB6144GK - NEK6144GK EMT6144U - EMT6144GK	50 Hz	1.06 mm I.D. × 3.30 m	1.06 mm I.D. × 2.80 m
	60 Hz	1.06 mm I.D. × 2.80 m	1.06 mm I.D. × 2.45 m
NB6152GK - NEK6152U EMT6152U - EMT6152GK	50 Hz	1.06 mm I.D. × 3.10 m	1.06 mm I.D. × 2.55 m
	60 Hz	1.06 mm I.D. × 2.65 m	1.06 mm I.D. × 2.15 m
NB5165GK NB6165GK - NEK6165GK EMT6165U - EMT6165GK	50 Hz	1.06 mm I.D. × 2.80 m	1.20 mm I.D. × 3.30 m
	60 Hz	1.06 mm I.D. × 2.45 m	1.20 mm I.D. × 2.85 m
NE5181GK - NEK6181U NE6181GK - NEK 6181GK	50 Hz	1.20 mm I.D. × 3.00 m	1.20 mm I.D. × 2.35 m
	60 Hz	1.20 mm I.D. × 2.60 m	1.20 mm I.D. × 2.05 m
NE5195GK NE6195GK	60 Hz	1.20 mm I.D. × 2.80 m	1.27 mm I.D. × 2.65 m
NEK 6210U NE6210GK - NEK6210GK	50 Hz	1.20 mm I.D. × 2.75 m	1.27 mm I.D. × 2.45 m
	60 Hz	1.20 mm I.D. × 2.35 m	1.27 mm I.D. × 2.15 m
NEK6213U - NEK6213GK NE9213GK	50 Hz	1.27 mm I.D. × 2.55 m	1.27 mm I.D. × 1.80 m
	60 Hz	1.27 mm I.D. × 2.20 m	1.27 mm I.D. × 1.55 m
T6217GK NT6217U - NT6217GK	50 Hz	1.27 mm I.D. × 2.15 m	1.27 mm I.D. × 1.50 m
	60 Hz	1.27 mm I.D. × 1.85 m	1.37 mm I.D. × 1.60 m
T6220GK	50 Hz	1.37 mm I.D. × 1.90 m	1.37 mm I.D. × 1.50 m

PictureS Mbsm Dot Pro : www.mbsm.pro

R22 - MBP/HBP Applications

COMPRESSOR	FREQUENCY	DIMENSION	
		(from -20°C to -5°C evap. temp.)	(from -5°C to +10°C evap. temp.)
T6217E	50 Hz	1.27 mm I.D. × 2.3 m	1.27 mm I.D. × 1.6 m
T6220E	50 Hz	1.37 mm I.D. × 2.0 m	1.37 mm I.D. × 1.6 m
NJ9226E - NJ9226P - NJ7225F	50 Hz	1.63 mm I.D. × 2.9 m	1.63 mm I.D. × 1.7 m
	60 Hz	1.63 mm I.D. × 2.5 m	1.90 mm I.D. × 1.9 m
NJ7228F - NJ7228P - NJ7228E	50 Hz	1.63 mm I.D. × 2.4 m	1.90 mm I.D. × 1.9 m
	60 Hz	1.90 mm I.D. × 2.5 m	2.16 mm I.D. × 2.0 m
NJ9232E - NJ9232P - NJ7231F NJ7231P	50 Hz	1.90 mm I.D. × 2.8 m	2.16 mm I.D. × 2.2 m
	60 Hz	1.90 mm I.D. × 2.15 m	2.16 mm I.D. × 1.7 m
NJ9238E - NJ9238P NJ7238E - NJ7238P	50 Hz	2.16 mm I.D. × 2.6 m	2 × 1.63 mm I.D. × 1.8 m
	60 Hz	2.16 mm I.D. × 2.0 m	2 × 2.16 mm I.D. × 2.5 m
NJ7240E - NJ7240D	50 Hz	2.16 mm I.D. × 2.3 m	2 × 2.16 mm I.D. × 2.8 m

PictureS Mbsm Dot Pro : www.mbsm.pro

R134a - HBP Applications

COMPRESSOR	FREQUENCY	DIMENSION	
		(from -15°C to -5°C evap. temp.)	(from -5°C to +10°C evap. temp.)
T6213Z	50 Hz	1.37 mm I.D. × 3.5 m	1.50 mm I.D. × 3.3 m
	60 Hz	1.37 mm I.D. × 3.1 m	1.50 mm I.D. × 2.9 m
T6215Z - T6217Z	50 Hz	1.37 mm I.D. × 3.1 m	1.50 mm I.D. × 2.9 m
	60 Hz	1.37 mm I.D. × 2.7 m	1.50 mm I.D. × 2.5 m
NJ6220Z - NJ6220ZX	50 Hz	1.63 mm I.D. × 3.6 m	1.78 mm I.D. × 3.3 m
	60 Hz	1.63 mm I.D. × 3.0 m	1.78 mm I.D. × 2.75 m
NJ6226Z - NJ6226ZX	50 Hz	2 × 1.50 mm I.D. × 4.0 m	2 × 1.63 mm I.D. × 3.0 m
	60 Hz	2 × 1.50 mm I.D. × 3.4 m	2 × 1.63 mm I.D. × 2.5 m

PictureS Mbsm Dot Pro : www.mbsm.pro

R 22 - Air Conditioning Applications

COMPRESSOR	FREQUENCY	DIMENSION	
NE7213E	50 Hz	1.24 mm I.D. × 1.05 m	–
	60 Hz	1.24 mm I.D. × 1.0 m	–
NE7215E	50 Hz	1.24 mm I.D. × 1.0 m	–
	60 Hz	1.24 mm I.D. × 0.95 m	–
T7220E - T7220F	50 Hz	1.37 mm I.D. × 1.0 m	–
	60 Hz	1.37 mm I.D. × 0.95 m	–
T7223E - T7223F	50 Hz	1.5 mm I.D. × 1.05 m	–
	60 Hz	1.5 mm I.D. × 1.0 m	–
NJ7225E - NJ7225F	50 Hz	2.16 mm I.D. × 2.0 m	–
	60 Hz	2.16 mm I.D. × 1.8 m	–
NJ7228E - NJ7228F	50 Hz	2.16 mm I.D. × 1.9 m	–
	60 Hz	2.16 mm I.D. × 1.7 m	–
NJ7231E - NJ7231F -NJ7231P	50 Hz	2.16 mm I.D. × 1.6 m	–
	60 Hz	2.16 mm I.D. × 1.4 m	–
NJ7238E - NJ7238P	50 Hz	2 × 2.16 mm I.D. × 2.5 m	–
	60 Hz	2 × 2.16 mm I.D. × 2.3 m	–
	50 Hz	2 × 2.16 mm × I.D. × 2.3 m	–

PictureS Mbsm Dot Pro : www.mbsm.pro

R134a - HBP Applications

COMPRESSOR	FREQUENCY	DIMENSION	
		(from –15°C to –5°C evap. temp.)	(from –5°C to +10°C evap. temp.)
NB5125Z	50 Hz	0.78 mm I.D. × 2.5 m	0.91 mm I.D. × 2.4 m
	60 Hz	0.78 mm I.D. × 2.1 m	0.91 mm I.D. × 2.0 m
NB5128Z	50 Hz	0.78 mm I.D. × 2.4 m	0.91 mm I.D. × 2.3 m
	60 Hz	0.78 mm I.D. × 2.0 m	0.91 mm I.D. × 1.9 m
NB5132Z - NB6132Z	50 Hz	0.78 mm I.D. × 2.3 m	0.91 mm I.D. × 2.2 m
	60 Hz	0.78 mm I.D. × 1.9 m	0.91 mm I.D. × 1.8 m
NB5144Z - NB6144Z NEK5144Z - EMT6144Z	50 Hz	0.91 mm I.D. × 2.9 m	1.06 mm I.D. × 2.7 m
	60 Hz	0.91 mm I.D. × 2.4 m	1.06 mm I.D. × 2.3 m
NE5160Z - NE6160Z NEK6160Z - EMT6160Z	50 Hz	0.91 mm I.D. × 2.4 m	1.06 mm I.D. × 2.5 m
	60 Hz	0.91 mm I.D. × 2.1 m	1.06 mm I.D. × 2.2 m
NE5170Z - NE6170Z NEK5170Z - NEK6170Z EMT6170Z	50 Hz	1.06 mm I.D. × 3.2 m	1.27 mm I.D. × 3.3 m
	60 Hz	1.06 mm I.D. × 2.65 m	1.27 mm I.D. × 2.75 m
NE5187Z - NE6187Z NEK6187Z	50 Hz	1.24 mm I.D. × 4.0 m	1.37 mm I.D. × 3.3 m
	60 Hz	1.24 mm I.D. × 3.4 m	1.37 mm I.D. × 2.9 m
NE6210Z - NEK6210Z NEK6212Z	60 Hz	1.37 mm I.D. × 3.5 m	1.50 mm I.D. × 3.3 m
	60 Hz	1.37 mm I.D. × 3.3 m	1.50 mm I.D. × 3.1 m
	50 Hz	1.37 mm I.D. × 3.5 m	1.50 mm I.D. × 3.3 m

PictureS Mbsm Dot Pro : www.mbsm.pro

R22 - MBP/HBP Applications

COMPRESSOR	FREQUENCY	DIMENSION	
		(from -20°C to -5°C evap. temp.)	(from -5°C to +10°C evap. temp.)
NB6144E	50 Hz	1.06 mm I.D. × 3.5 m	1.06 mm I.D. × 3.0 m
	60 Hz	1.06 mm I.D. × 3.0 m	1.06 mm I.D. × 2.6 m
NB6152E	50 Hz	1.06 mm I.D. × 3.3 m	1.06 mm I.D. × 2.7 m
	60 Hz	1.06 mm I.D. × 2.8 m	1.06 mm I.D. × 2.3 m
NB5165E - NB6152E	50 Hz	1.06 mm I.D. × 3.0 m	1.20 mm I.D. × 3.5 m
	60 Hz	1.06 mm I.D. × 2.6 m	1.20 mm I.D. × 3.0 m
NE5181E - NE6181E	50 Hz	1.20 mm I.D. × 3.2 m	1.20 mm I.D. × 2.5 m
	60 Hz	1.20 mm I.D. × 2.75 m	1.20 mm I.D. × 2.2 m
NE5195E - NE6195E	60 Hz	1.20 mm I.D. × 3.0 m	1.27 mm I.D. × 2.8 m
NE5195E - NE6210E	50 Hz	1.20 mm I.D. × 2.9 m	1.27 mm I.D. × 2.6 m
	60 Hz	1.20 mm I.D. × 2.5 m	1.27 mm I.D. × 2.3 m
NE6212E - NE7212E	50 Hz	1.27 mm I.D. × 2.7 m	1.27 mm I.D. × 1.9 m

PictureS Mbsm Dot Pro : www.mbsm.pro

R22 - LBP Applications

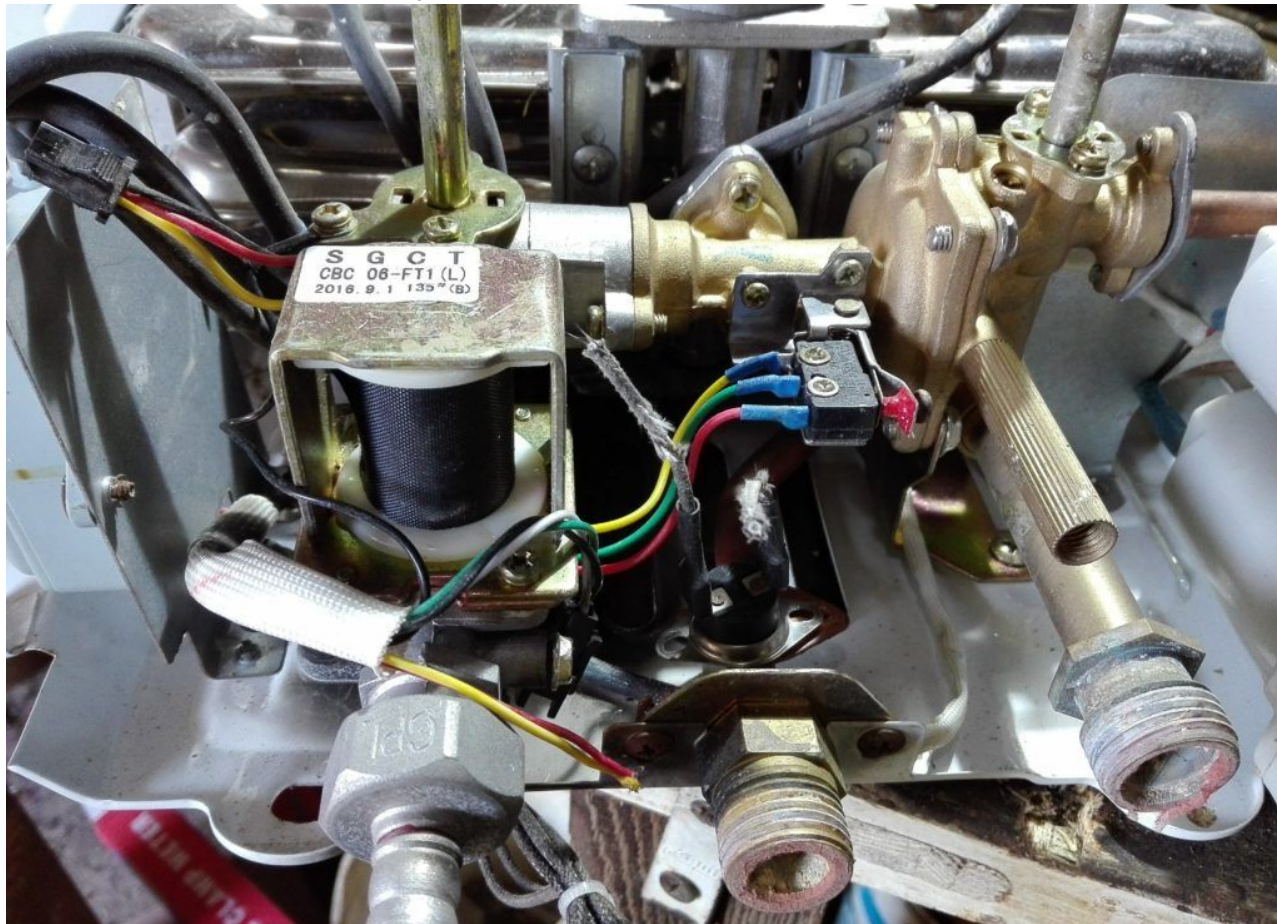
COMPRESSOR	FREQUENCY	DIMENSION	
		(from -30°C to -5°C evap. temp.)	-
NE2125E	50 Hz	0.91 mm I.D. × 3.2 m	-
	60 Hz	0.91 mm I.D. × 2.85 m	-
NE2134E	50 Hz	0.91 mm I.D. × 2.8 m	-
	60 Hz	0.91 mm I.D. × 2.5 m	-
T2140E	50 Hz	0.91 mm I.D. × 2.6 m	-
	60 Hz	0.91 mm I.D. × 2.3 m	-
T2155E	50 Hz	1.20 mm I.D. × 3.9 m	-
	60 Hz	1.20 mm I.D. × 3.5 m	-
T2168E	50 Hz	1.20 mm I.D. × 3.3 m	-
	60 Hz	1.20 mm I.D. × 2.8 m	-
NJ2178E	50 Hz	1.20 mm I.D. × 3.0 m	-

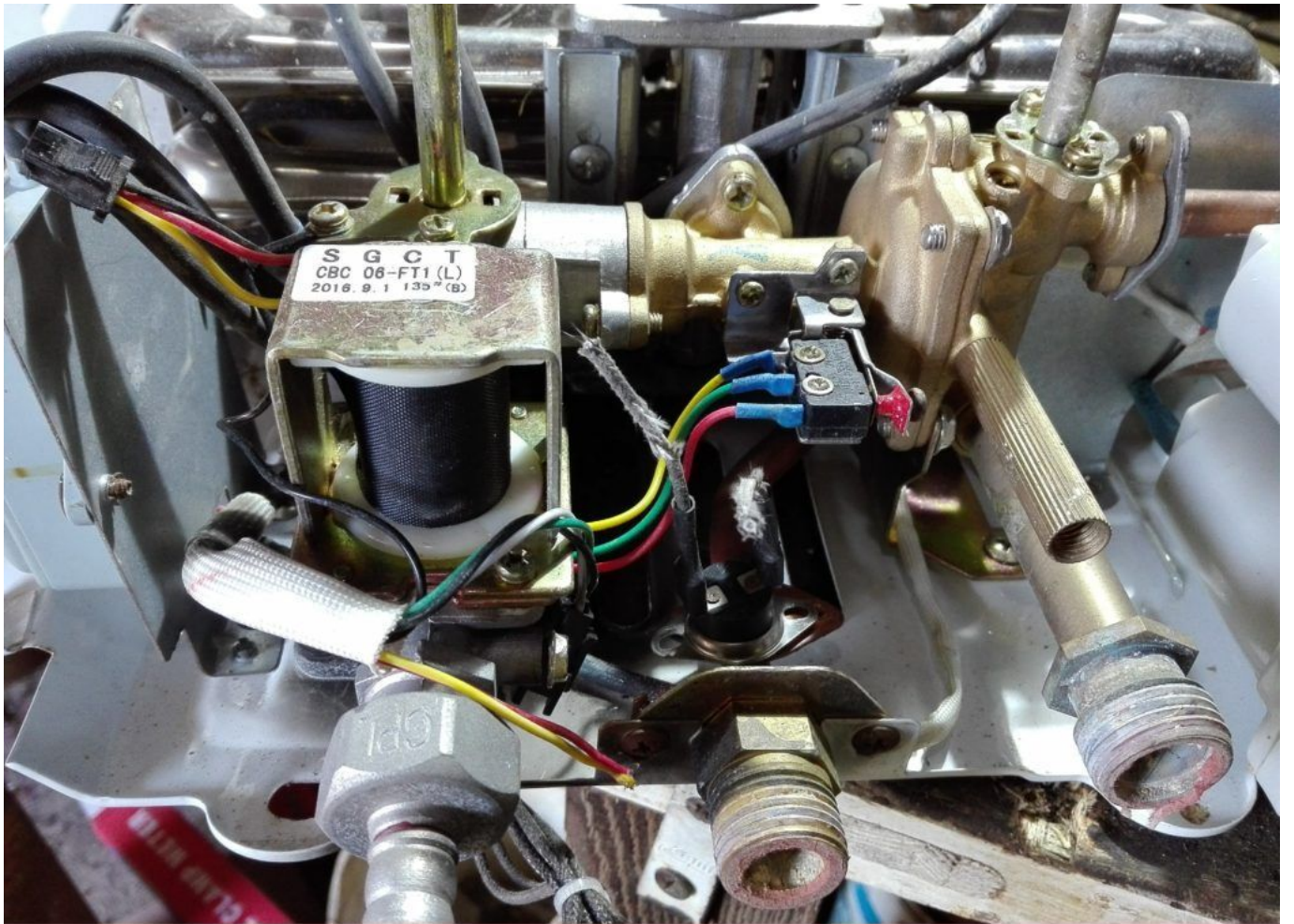
PictureS Mbsm Dot Pro : www.mbsm.pro

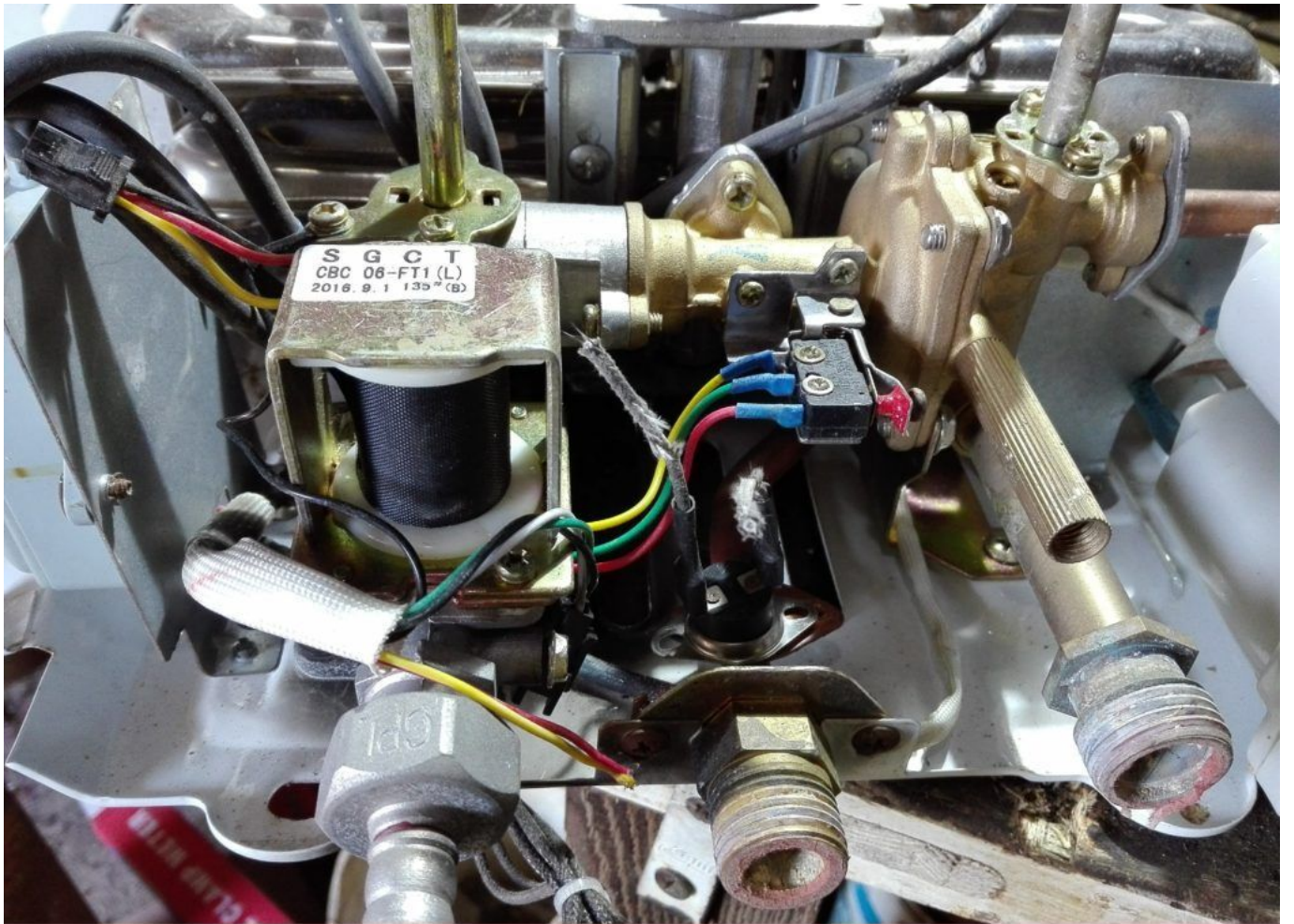
Choice Of Capillary , EMBARACO ASPERA
 إختيار الكابيلاري لشركة EMBARACO ASPERA

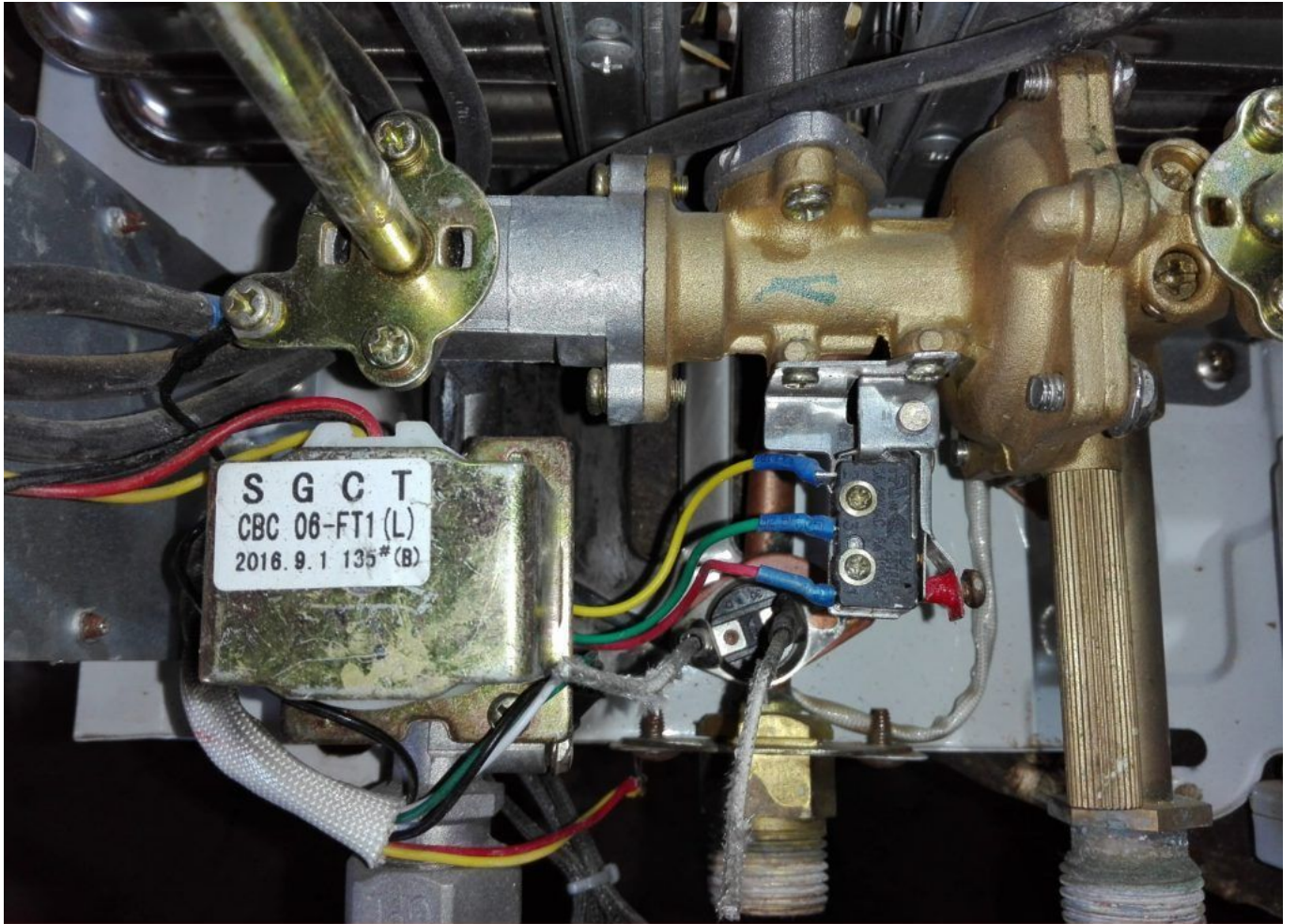
Changement injecteur gaz , M5 chauffe-eau Electronique 10l

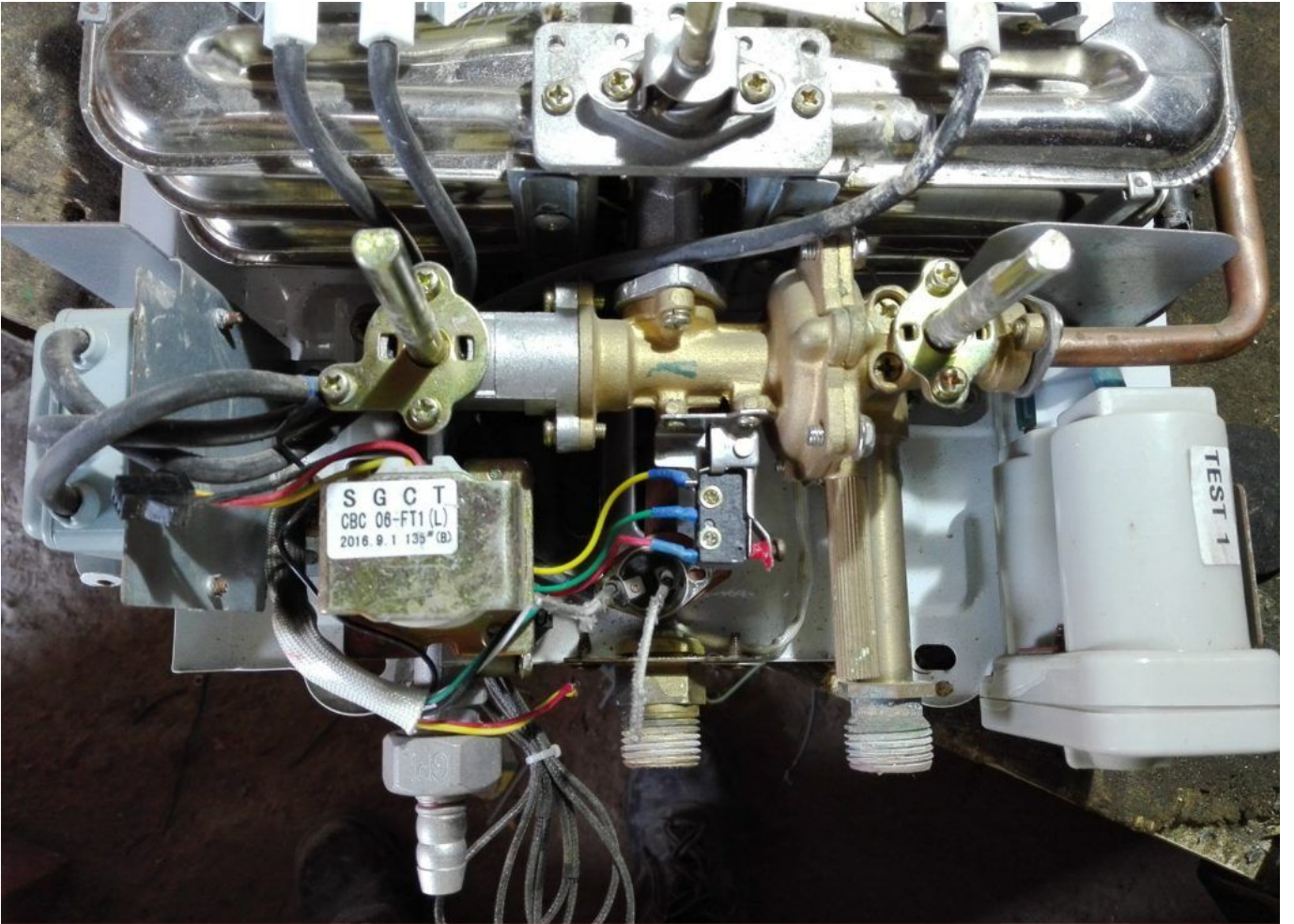
Category: Technologie, Tester ok
written by www.mbsm.pro | 19 April 2020

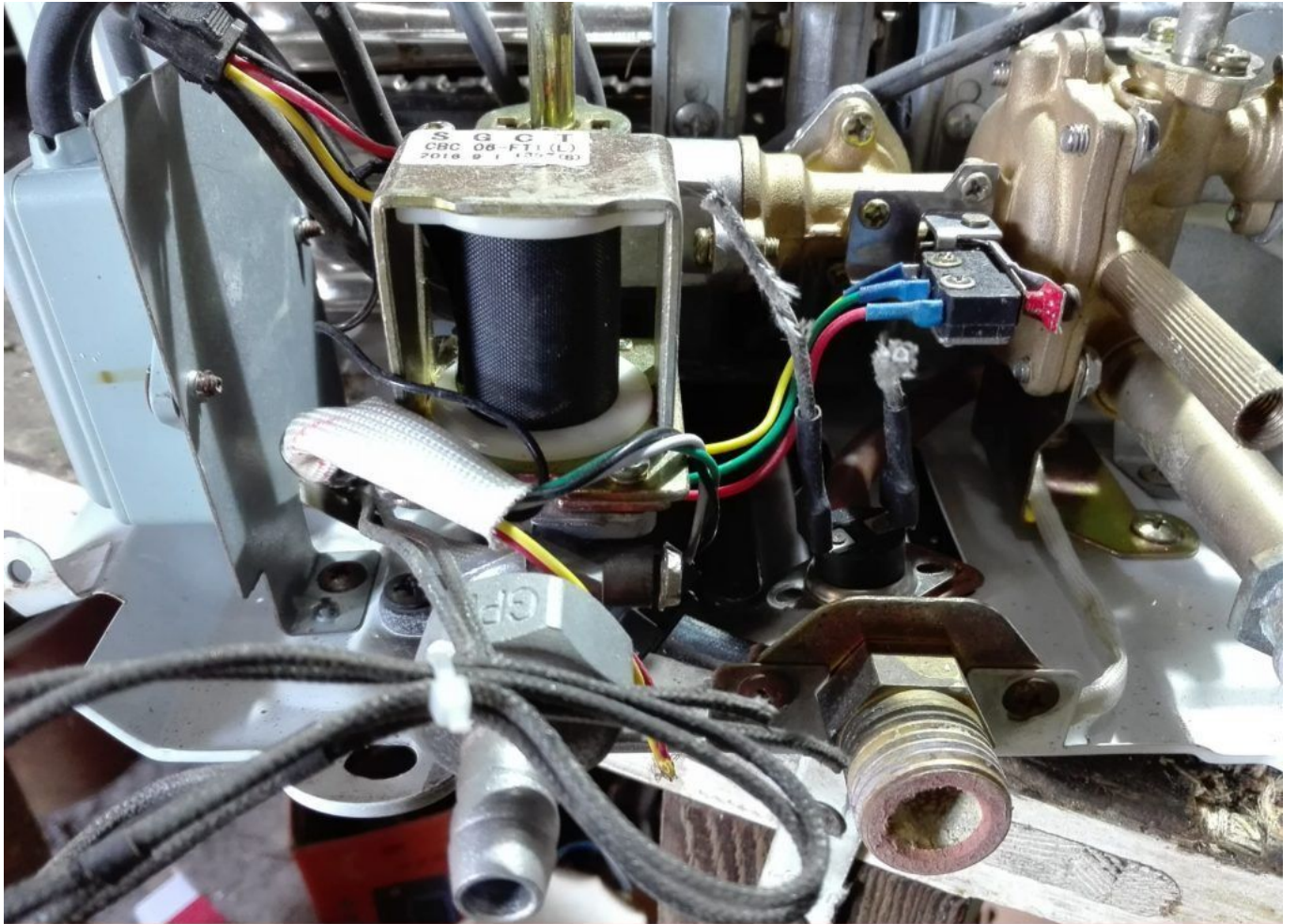


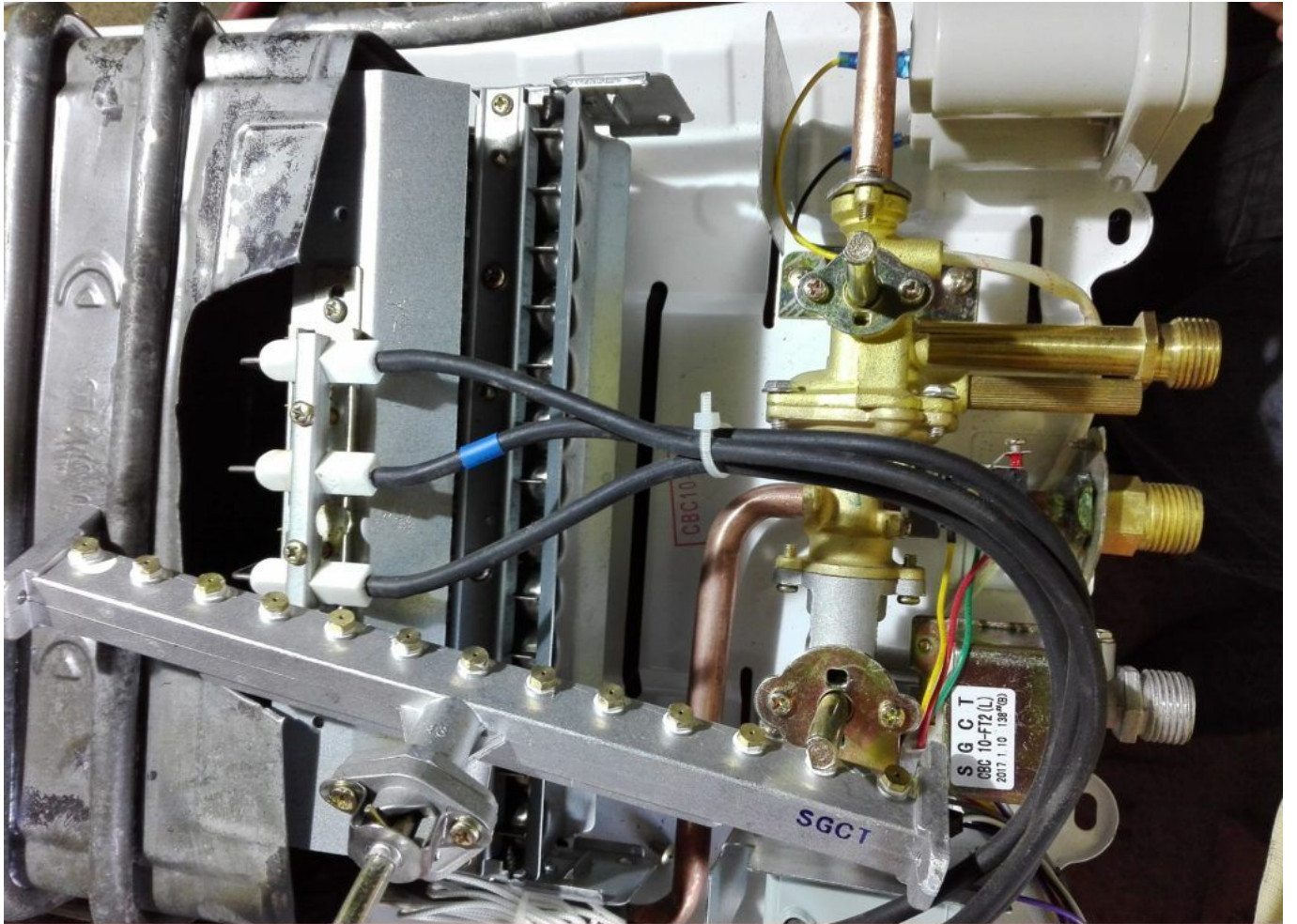


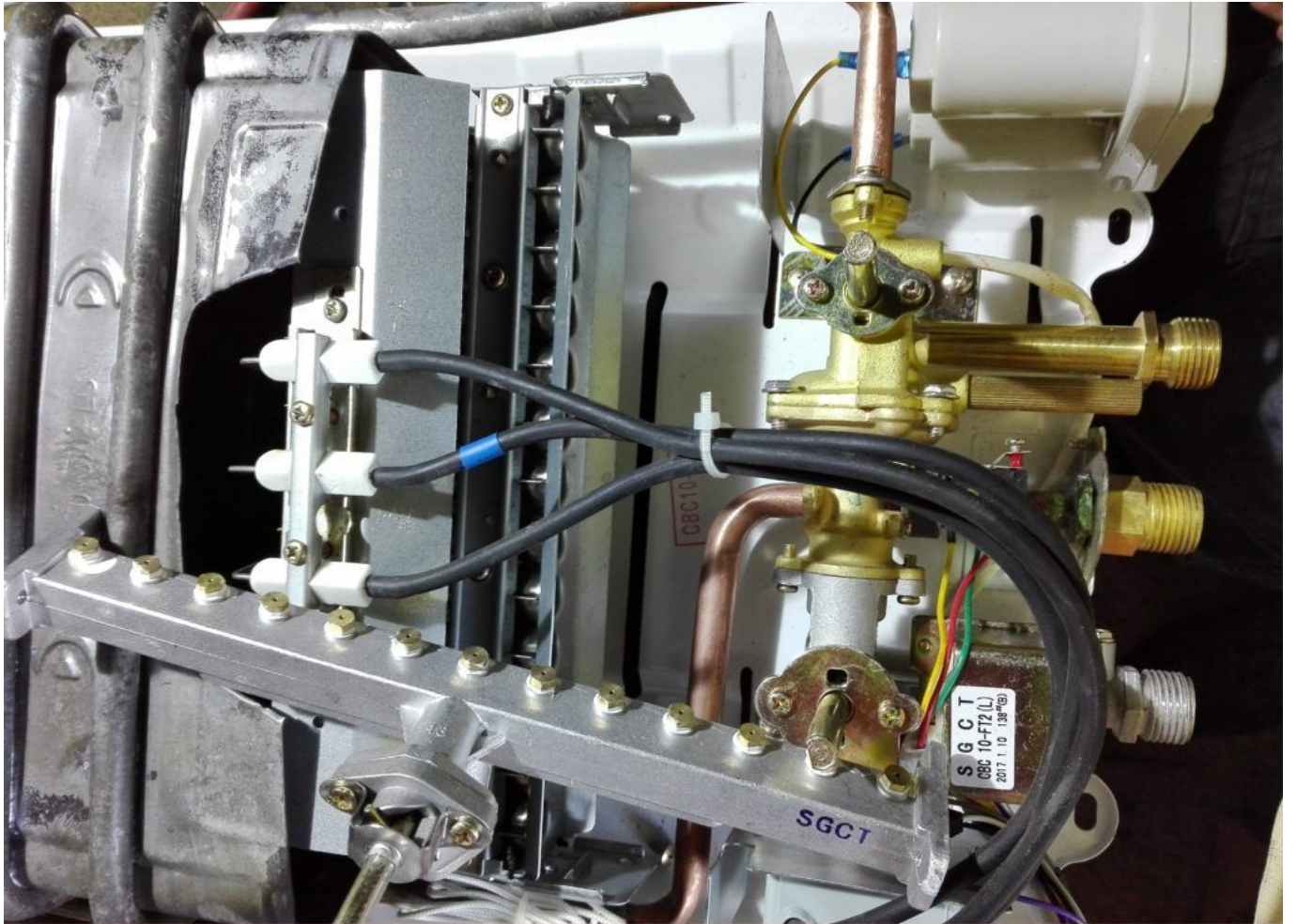


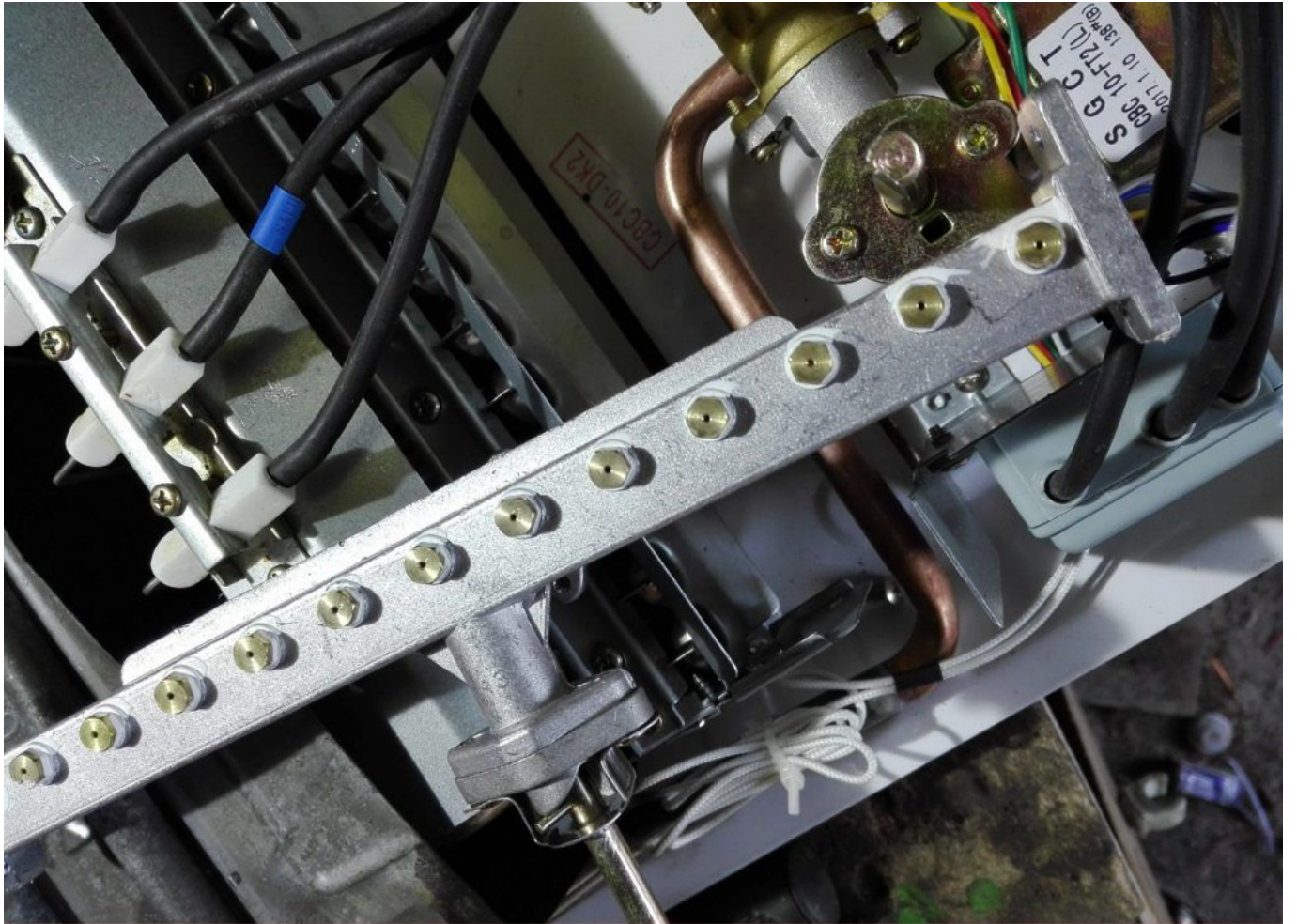


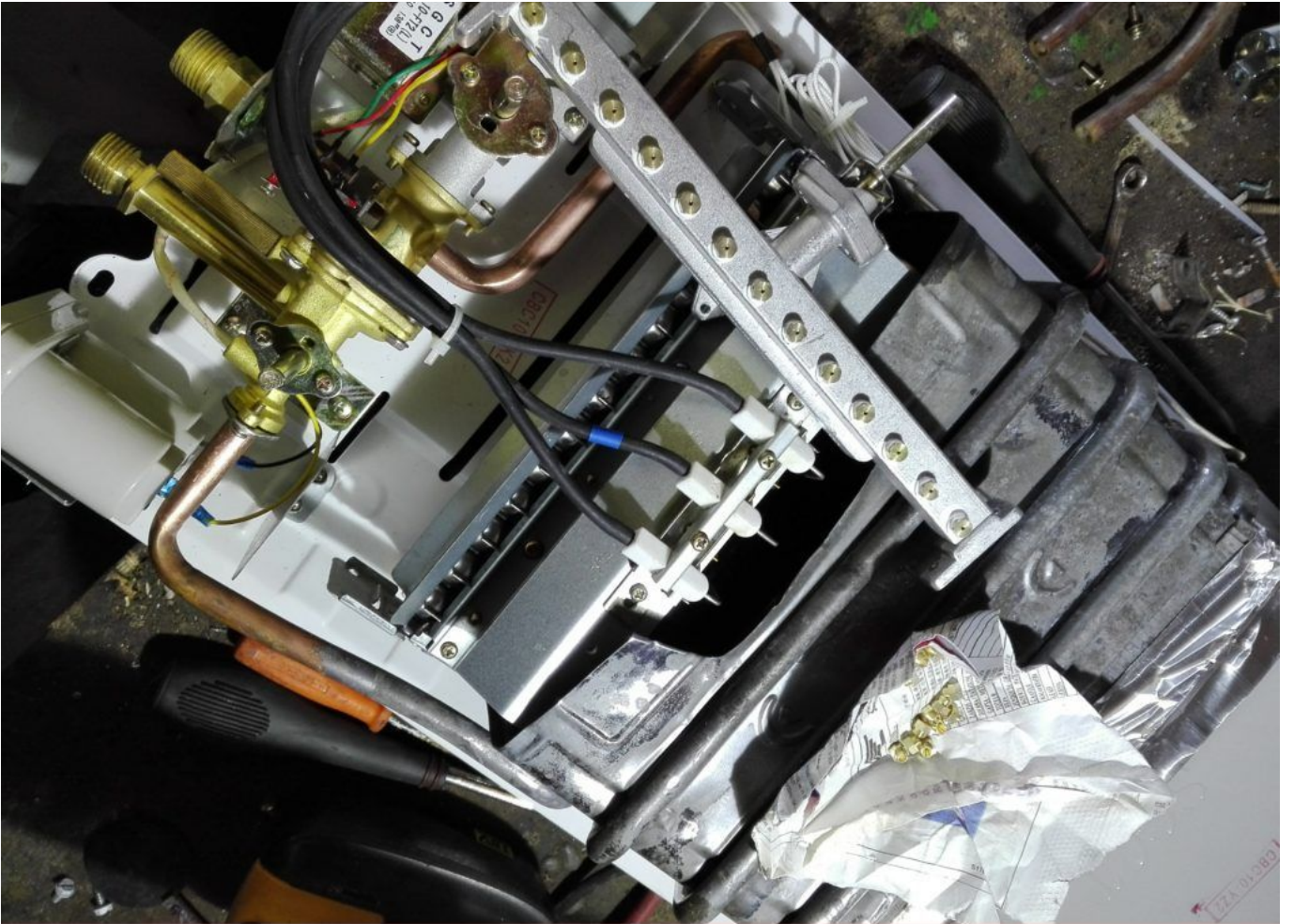


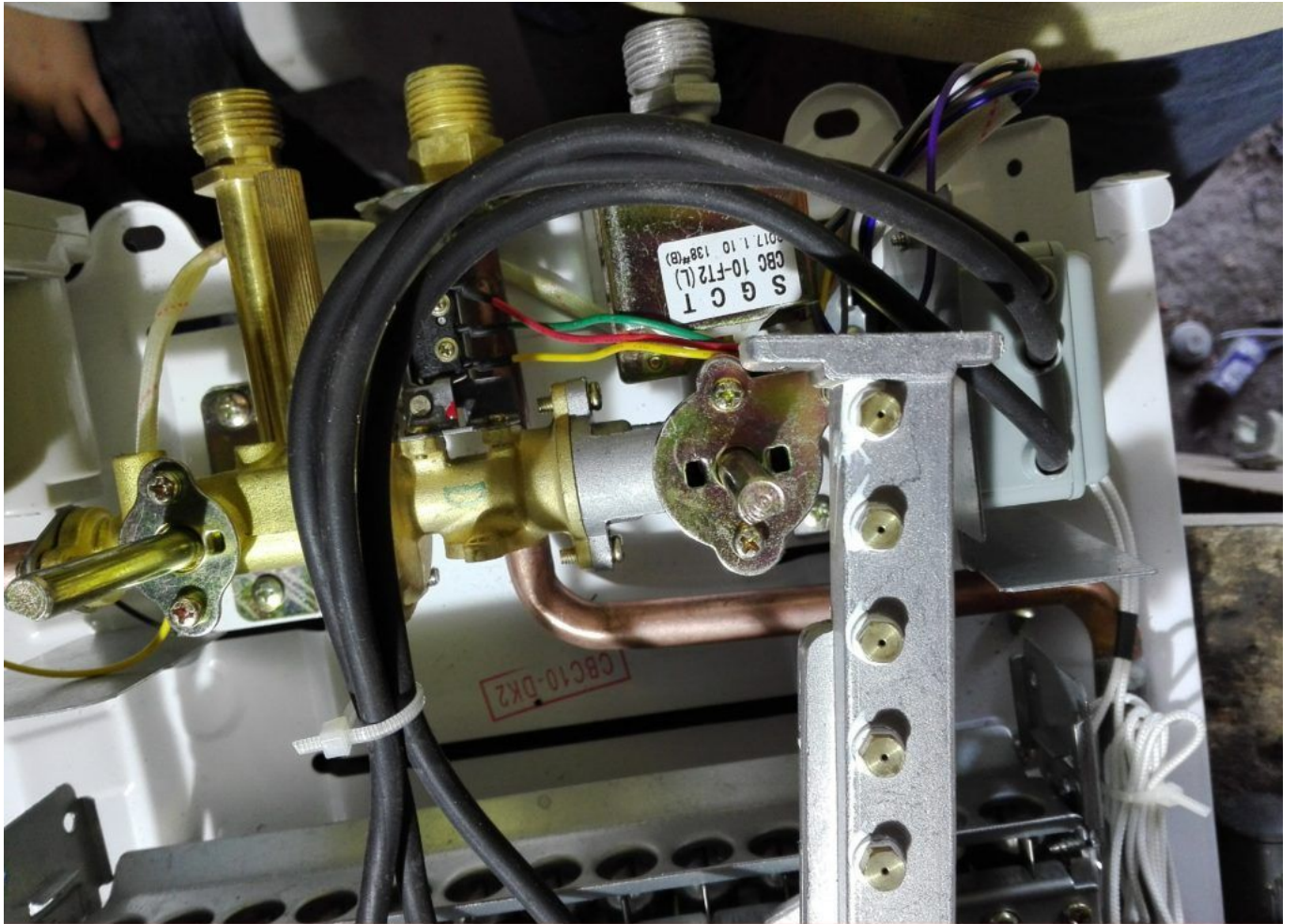




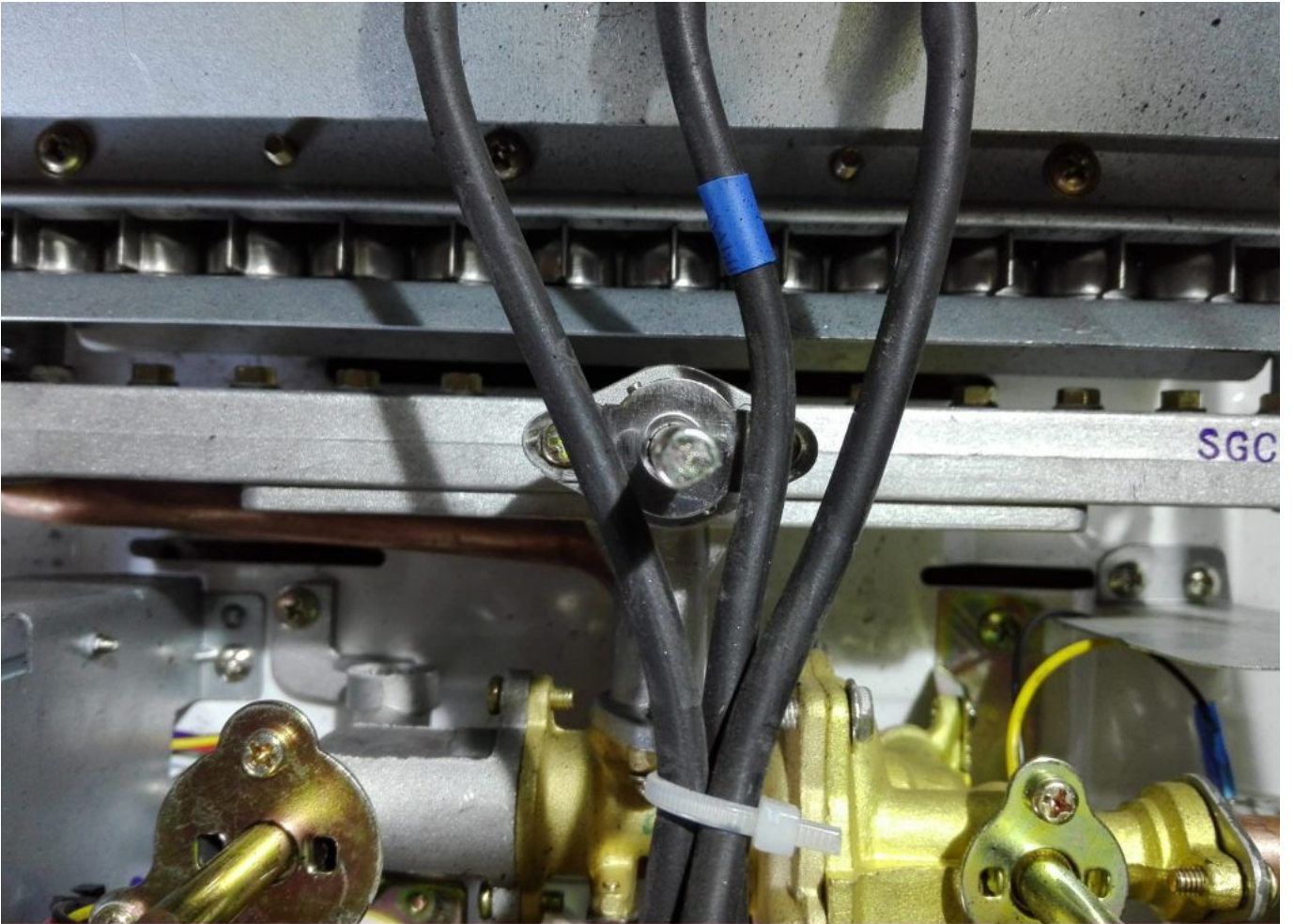


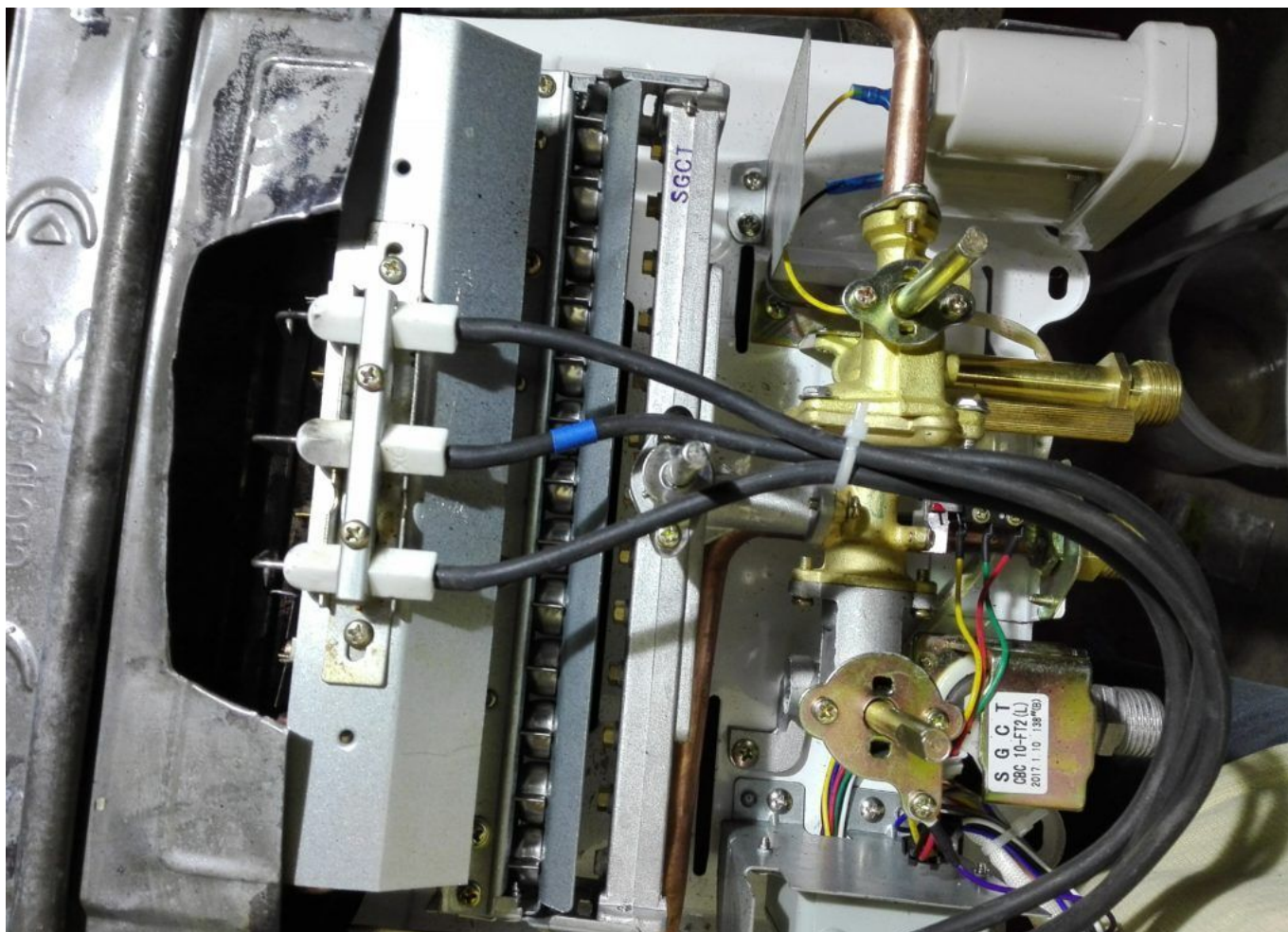










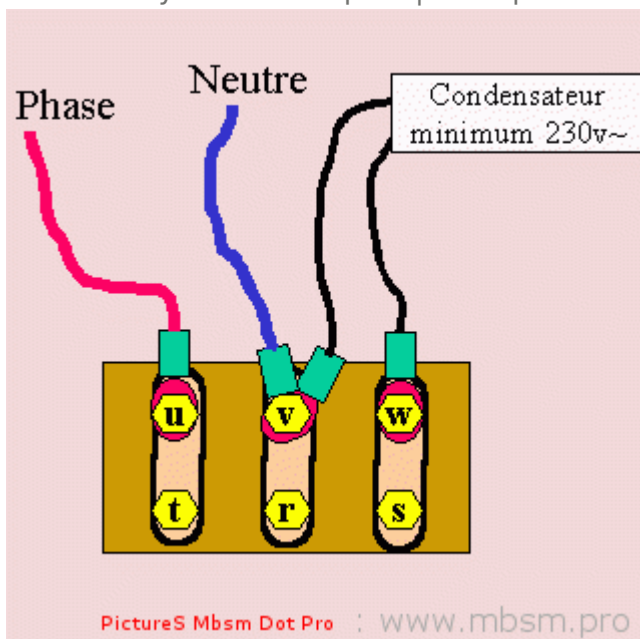


PictureS Mbsm Dot Pro : www.mbsm.pro

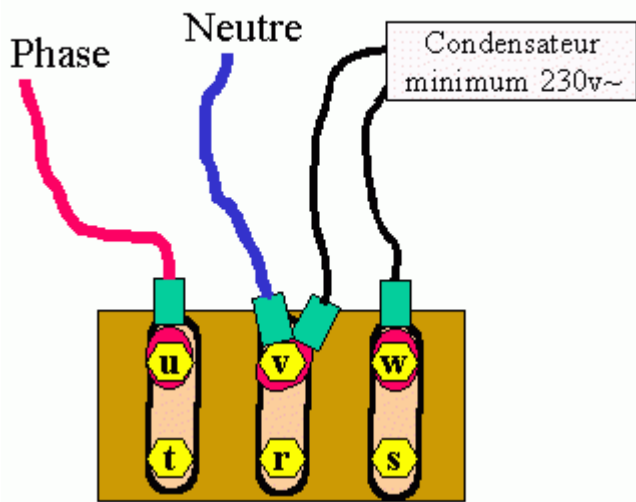
Changement injecteur gaz , M5 chauffe-eau Electronique 10l

Branchement Triangle 220v AC

Category: Technologie, Tester ok
written by www.mbsm.pro | 19 April 2020



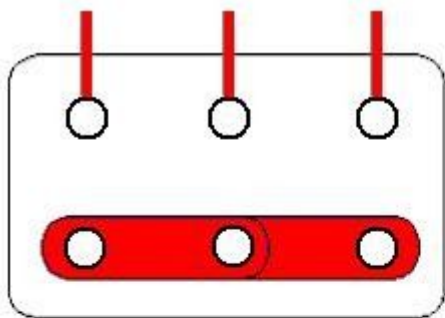
PictureS Mbsm Dot Pro : www.mbsm.pro



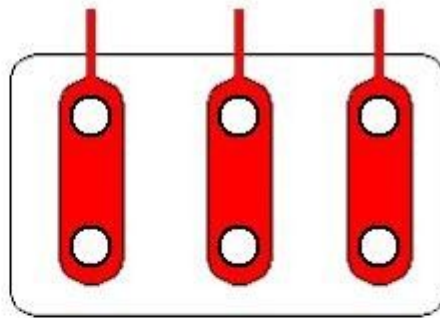
Branchement triangle (220v tri~)

PictureS Mbsm Dot Pro : www.mbsm.pro

Branchement Triangle 220v AC



Etoile



Triangle



3 barrettes =
Triangle

PictureS Mbsm Dot Pro : www.mbsm.pro

Un petit projet à réaliser .. Une balançoire haute sécurité pour les enfants

Category: Tester ok

written by www.mbsm.pro | 19 April 2020



Picture5 Mbsm Dot Pro ; www.mbsm.pro

مشروع صغير للتنفيذ .. أرجوحة أطفال عالية السلامة

A small project for implementation .. A high-safety swing for children



























Compressor ,TECUMSEH 1/4HP ,THG1374YS, R134A ,tm271-ms-393

Category: Technologie,Tester ok
written by www.mbsm.pro | 19 April 2020



PictureS Mbsm Dot Pro : www.mbsm.pro

Compressor ,TECUMSEH 1/4HP ,THG1374YS, R134A ,tm271-ms-393