

# Compressors , LG ,MA62LBJG ,1/5 HP, Gaz R134A

Category: Technologie,Tester ok  
written by [www.mbsm.pro](http://www.mbsm.pro) | 2 April 2020



R 134a

**RoHS**



LG

MA62LBJG

1PH 220-240V 50Hz



THERMALLY PROTECTED  
Made by LG Electronics



CM62705NL063027DL

Capillary	Ampair	Wattage	Codes	Hp Power
0.028	0.75	63	NS36LAEG	1\10
0.033	0.81	77	MSA43LBEG	1\8
0.033	1.12	116	MA53LAEG	1\6
0.033	1.12	142	MA57LBEG	1\6+
0.036	1.35	160	MA62LCEG	1\5
0.040	1.35	174	MA69LCEG	1\5+
0.040	1.4	200	MA72LCEG	1\4
0.042	1.6	210	MA88LCEG	1\3
0.042	1.6	279	MA98LAEM	1\3+

Private Picture Copyright : [WWW.MBSM.PRO](http://WWW.MBSM.PRO)

LG air compressor for refrigerators MA62LAEP uses voltage 220V (220V mini air compressor ), at 50Hz, 180W (174W)-cooling capacity using motor Lg kx62laeg refrigerator compressor

Capacité de refroidissement: 596 Btu (0,234 HP)

Source d'alimentation: 220V, 1Pha, 50Hz

Réfrigérant: Gaz R134A

Origine: Chine

Description du produit

Frozen Joint Stock Company est spécialisée dans la fourniture de compresseurs LG, la distribution de compresseurs LG et l'installation de compresseurs LG pour le stockage à froid, les réfrigérateurs, les armoires de stockage, les climatiseurs, les ensembles de compresseurs à condenseur, l'assurance qualité. Qualité et meilleur prix.

**Le compresseur LG MA62LAEP** est un mini compresseur à piston de **220 V** , conçu pour un fonctionnement compact et silencieux, avec le couple le plus élevé (HST) pour aider la machine à fonctionner efficacement et à réduire le bruit. Capacité de réfrigération de 0,15 HP, adaptée aux réfrigérateurs, armoires de stockage, chambre froide. **Le compresseur LG MA62LAEP** utilise du gaz réfrigérant R134A, fabriqué en Inde, avec des certificats CO et CQ complets pour l'assurance qualité.

Spécifications du **compresseur LG MA62LAEP**

Modèle		MA62LAEP
	HP	0,234
Capacité de refroidissement	W	174
	Btu / h	596
COP	w / w	1,3
EER	Btu / WH	4.44
Source d'alimentation		220V, 1Pha, 50Hz
Débit d'aspiration	cc	6.2
Le volume	Kg	9.2
Réfrigérant		Gaz R134

Fabriqué en

La Chine

Vous cherchez à acheter des **compresseurs LG MA62LAEP** , en plus des compresseurs, nous fournissons et distribuons également des produits, équipements et fournitures de réfrigération, y compris **des unités intérieures** , des unités extérieures industrielles, du gaz réfrigéré, des tuyaux en cuivre, de l'isolation isolation, leds de stockage à froid, stores de chambre froide et accessoires de porte de chambre froide, y compris charnières de porte de chambre froide, joints de porte de chambre froide, et composants de porte de chambre froide, salles blanches, etc.



R 134a

**RoHS**



LG

MA62LBJG

1PH 220-240V 50Hz

THERMALLY PROTECTED  
Made by LG Electronics



CM62705NL063027DL



Private Picture Copyright : [WWW.MBSM.PRO](http://WWW.MBSM.PRO)

Mbsm\_dot\_pro\_private\_PDF\_MA62LBJG-Refrigerator\_Compressor\_151207Télécharger



**MA 69 L A E G**

**Series name**

MA  
MB  
MC  
MQ

**Displacement**

Ex) 69 = 6.9cc/rev.

**Application category**

L : R134a, LBP  
H : R134a, HBP  
N : R600a, LBP

**Improvement order**

A  
B  
C  
D  
E  
F  
H,K,J,M,N - AL-Wire

**Motor type**

G : RSIR, PTC  
F : CSIR, PTC  
M : RSCR, PT  
H : CSR, PTC  
P : CSIR, RELAY

**Rated voltage & Frequency**

A : 110V 50/60Hz    P : 110V 50Hz  
B : 220V 50/60Hz    Q : 110-115V 60Hz  
C : 115V 60Hz        S : 200-220V 50Hz  
D : 220V 60Hz        T : 200V 60Hz  
E : 220-240V 50Hz    T : 220-240V 50Hz  
F : 127V 60Hz        U : 220V 60Hz  
J : 220V 50Hz        U : 110-127V 60Hz  
K : 110V 60Hz



Private Picture Copyright : [WWW.MBSM.PRO](http://WWW.MBSM.PRO)

# COMPRESSEUR ZEL , 200w , HDL200A, R600a, LBP , 1/4 hp

Category: Technologie, Tester ok  
written by [www.mbsm.pro](http://www.mbsm.pro) | 2 April 2020



Private Picture Copyright : [WWW.MBSM.PRO](http://WWW.MBSM.PRO)

Model	Motor	Disp.	Power	Motor type	Freq.	Cooling capacity	Input power	Input power (RC)	COP	COP (RC)	Run capacitor	Height	Netweight
GDL145D	Cu	4.4	1/8	RSIR/RSCR	60	145	94	87	1.55	1.67	10	161	7.3
GDL175D	Cu	5.3	1/6	RSIR/RSCR	60	175	112	106	1.56	1.65	10	161	7.3
GML140A	Al	4.9	1/6	RSIR	50	140	112	0	1.25	0	0	152	6.3
GML160A	Al	5.7	1/6	RSIR	50	160	128	0	1.25	0	0	161	6.9
GML180A	Al	6.5	1/5	RSIR	50	180	144	0	1.25	0	0	161	7.1
GML200A	Al	7	1/5	RSIR	50	200	160	0	1.25	0	0	164	7.3
GML145D	Al	4.4	1/7	RSIR/RSCR	60	145	97	92	1.5	1.57	10	164	7.1
GML175D	Al	4.9	1/6	RSIR/RSCR	60	175	118	112	1.48	1.56	10	164	7.1
GPL175D*	Cu	4.9	1/7	CSCR	60	175		97		1.8	10	161	7.6
GXL175D	Cu	4.9	1/7	RSCR	60	175		101		1.73	10	164	7.6

PictureS Mbsm Dot Pro : [www.mbsm.pro](http://www.mbsm.pro)

TECHNICAL CHARACTERISTICS

SCHEME COMPRESSORS

OF

ELECTRIC DIAGRAMS

ASSEMBLY

TECHNICAL SCHEMES

Model	Motor	Speed range	Displ., cm <sup>3</sup>	Motor type	Freq. hz	Cooling Capacity, w -23.3 °C/(+7.2 °C)*	Input Power, BT		COP, w/w		Run Capacitor, µF	Height, mm	Net Weight, kg	Type of cooling, S/F
							without RC	with RC	without RC	with RC				
HDL100A	Al	-	5,7	RSCR	50	98	-	60	-	1,64	2,5	161	6,9	-
HDL100A(I)	Cu/Al	-	5,7	RSCR	50	98	-	57	-	1,72	2,5	164	7,2	-
HDL125A	Al	-	7,0	RSCR	50	123	-	72	-	1,70	2,5	164	7,2	-
HDL125A (I)	Cu/Al	-	7,0	RSCR	50	123	-	69	-	1,79	2,5	164	7,2	-
HDL140A	Al	-	8,0	RSCR	50	140	-	80	-	1,74	2,5	164	7,2	-
HDL160A	Al	-	9,2	RSCR	50	160	-	90	-	1,77	3	164	7,2	-
HDL170A	Al	-	9,5	RSCR	50	172	-	101	-	1,70	4	164	7,2	-
HDL190A	Cu/Al	-	10,5	RSCR	50	185	-	106	-	1,75	4	164	7,2	-
HDL200A	Cu/Al	-	12,0	RSCR	50	200	-	118	-	1,70	4	164	7,2	-
HDL80A	Al	-	4,9	RSCR	50	80	-	49	-	1,62	2	161	6,9	-
HML100A	Al	-	5,7	RSCR	50	98	-	71	-	1,39	2	152	6,3	-
HML125A	Al	-	7,0	RSCR	50	125	-	83	-	1,45	2	152	6,3	-
HML140A	Al	-	8,0	RSCR	50	140	-	90	-	1,56	3	152	6,3	-
HML170A	Al	-	9,5	RSCR	50	165	-	114	-	1,45	3	161	6,9	-
HML200A	Al	-	12,0	RSCR	50	200	-	138	-	1,45	4	164	7,2	-
HML80A	Al	-	4,9	RSCR	50	80	-	55	-	1,45	2	152	6,3	-
HPL100A	Cu	-	5,7	CSCR	50	100	-	51	-	1,96	2	161	7,3	-
HPL125A	Cu	-	7,0	CSCR	50	125	-	64	-	1,96	2	161	7,3	-
HPL140A	Cu	-	8,0	CSCR	50	145	-	74	-	1,95	2	161	7,3	-
HXL100A	Cu	-	5,7	RSCR	50	98	-	52	-	1,87	2	161	7,3	-
HXL125A	Cu	-	7,0	RSCR	50	123	-	65	-	1,90	2	161	7,3	-
HXL140A	Cu	-	8,0	RSCR	50	140	-	73	-	1,91	2	161	7,3	-
HXL170A	Cu	-	9,3	RSCR	50	175	-	93	-	1,88	2	161	7,3	-
HXL190A	Cu	-	10,5	RSCR	50	190	-	103	-	1,85	3	164	7,3	-
HXL190A (B)	Cu	-	12,0	RSCR	50	200	-	108	-	1,85	3	164	7,3	-
HXL50A	Cu	-	4,9	RSCR	50	53	-	31	-	1,70	1,5	164	7,3	-

PictureS Mbsm Dot Pro : [www.mbsm.pro](http://www.mbsm.pro)



Private Picture Copyright : [WWW.MBSM.PRO](http://WWW.MBSM.PRO)

C 58708690

**ZEL** HDL200A 16-44  
220-240V 50Hz  
SUCTION >  
8 269 0902610 5  
ZANUSSI ELETTROMECCANICA COMPRESSOR







PictureS Mbsm Dot Pro : www.mbsm.pro

## كباسات ZEL ومواصفاتها مع مقاسات الثلاجات والفریزارات المختلفة

موديل الثلاجة	الحجم بالقدم 3	الحجم باللتر	قدرة الضاغط							
			R134a			R600a				
			Model	W	HP	Model	W	HP		
<b>LBP</b>										
<b>كباسات التجميد</b>										
Domestic single door 	4	5	113	160	GML70G	72	1/12	HMM70A	70	1/12
	6	7	170	198	GML70G	72	1/10	HMM70A	70	1/10
	8	9	226	254	GML90G	94	1/8	HMM90A	90	1/8
	9	13	283	370	GML125G	125	1/6	HML125AT	130	1/6
Domestic double door 	9	12	226	340	GML140AT	148	1/5	HML140AT	140	1/5
	13	17	370	481	GML200AT	195	1/4	HML200A	200	1/4
	17	22	509	623	GTH88AA	240	1/3	HKD14AA	240	1/3
Upright and chest freezer 	4	6	113	120	GML125G	125	1/6	HML125AT	130	1/6
	6	8	198	226	GML140AT	148	1/5	HML140AT	140	1/5
	8	12	254	340	GML200AT	195	1/4	HML200A	200	1/4
	12	18	370	509	GTH88AA	240	1/3	HKD14AA	240	1/3

PictureS Mbsm Dot Pro : www.mbsm.pro

GML70G,  
GML90G,  
GML125G,  
HMM70A,  
HMM90A,  
HML125AT,  
GML140AT  
GML200AT,  
GTH88AA,  
HML140AT,  
HML200A,  
HKD14AA,  
GML125G,  
GTH88AA,

GDL145D,  
GDL175D,  
GML140A,  
GML160A,  
GML180A,  
GML200A,  
GML145D,  
GML175D,  
GPL175D\*,  
GXL175D,  
GXL200D,

**R600a****مواصفات قياسات التجميد LBP**

Model الموديل	Voltage الفولت	Hz التردد	Cooling Capacity سعة التبريد - القدرة التبريدية		
			W	HP	
HMM70A	220 - 240	50	70	0.094	1/10
HMM80A	220 - 240	50	80	0.107	1/10
HMM90A	220 - 240	50	90	0.121	1/8
HMM100A	220 - 240	50	100	0.134	1/8
HML100A	220 - 240	50	103	0.138	1/8
HML125A	220 - 240	50	121	0.162	1/6
HML125AT	220 - 240	50	130	0.174	1/6
HML140AT	220 - 240	50	140	0.188	1/6
HML155A	220 - 240	50	155	0.208	1/5
HML170AT	220 - 240	50	170	0.228	1/5
HML190A	220 - 240	50	190	0.255	1/4
HML200A	220 - 240	50	200	0.268	1/4

**R134a****كباسات التجميد LBP**

Model الموديل	Voltage الفولت	Hz التردد	Cooling Capacity سعة التبريد - القدرة التبريدية		
			W	HP	
GML70G	220 - 240	50 - 60	72	0.097	1/12
GML80G	220 - 240	50 - 60	80	0.107	1/10
GML90G	220 - 240	50 - 60	94	0.126	1/8
GML110AT	220 - 240	50	113	0.151	1/7
GML125G	220 - 240	50 - 60	122	0.164	1/6
GML140G	220 - 240	50 - 60	136	0.182	1/6
GML140AT	220 - 240	50	148	0.198	1/5
GML180G	220 - 240	50 - 60	162	0.217	1/5
GML200AT	220 - 240	50	195	0.261	1/4
GTH88AA	220 - 240	50	240	0.322	1/3
GTH93AA	220 - 240	50	260	0.349	1/3
GTM93AA	220 - 240	50	280	0.375	3/8
GTM10AA	220 - 240	50	300	0.402	3/8+

PictureS Mbsm Dot Pro : [www.mbsm.pro](http://www.mbsm.pro)**Lambda/Zeta/Micro**PictureS Mbsm Dot Pro : [www.mbsm.pro](http://www.mbsm.pro)

# Tau



PictureS Mbsm Dot Pro : [www.mbsm.pro](http://www.mbsm.pro)

## كباسات ZEL ومواصفاتها مع مقاسات الثلاجات والفرزيرات المختلفة

موديل الثلاجة	الحجم بالقدم 3	الحجم باللتر	قدرة الضاغط							
			R134a			R600a				
			Model	W	HP	Model	W	HP		
<b>LBP</b> كباسات التجميد										
Domestic single door 	4	5	113	160	GML70G	72	1/12	HMM70A	70	1/12
	6	7	170	198	GML70G	72	1/10	HMM70A	70	1/10
	8	9	226	254	GML90G	94	1/8	HMM90A	90	1/8
	9	13	283	370	GML125G	125	1/6	HML125AT	130	1/6
Domestic double door 	9	12	226	340	GML140AT	148	1/5	HML140AT	140	1/5
	13	17	370	481	GML200AT	195	1/4	HML200A	200	1/4
	17	22	509	623	GTH88AA	240	1/3	HKD14AA	240	1/3
Upright and chest freezer 	4	6	113	120	GML125G	125	1/6	HML125AT	130	1/6
	6	8	198	226	GML140AT	148	1/5	HML140AT	140	1/5
	8	12	254	340	GML200AT	195	1/4	HML200A	200	1/4
	12	18	370	509	GTH88AA	240	1/3	HKD14AA	240	1/3

PictureS Mbsm Dot Pro : [www.mbsm.pro](http://www.mbsm.pro)



# Variable Speed Range 变频系列

# R600a

型号	电机	转速范围	排气量	电机类型	制冷量	输入功率	性能系数	高度	重量	认证
Model	Motor	Speed Range	Displ.	Motor Type	Cooling Capacity	Input Power	COP	Height	Net Weight	Certification
		rpm	cm <sup>3</sup>		w	w	w/w	mm	kg	

## 220-240V/50Hz

### T系列变频 T Series VSC

HKD66FSK	Al	1400-4000	6.6	PMSM	45-150	26-85	Up to 1.90	163	7.1	
HKD75FSK	Al	1400-4000	7.5	PMSM	52-170	29-96	Up to 1.90	163	7.1	
HKD86FSK	Al	1400-4000	8.6	PMSM	60-190	35-105	Up to 1.90	163	7.1	
HKD93FSK	Al	1400-4000	9.3	PMSM	70-210	40-125	Up to 1.90	163	7.1	
HKD10FSK	Al	1400-4000	10.5	PMSM	83-235	49-132	Up to 1.90	163	7.1	CCC
HKD12FSK	Al	1400-4000	11.5	PMSM	95-270	51-154	Up to 1.90	163	7.1	CCC
HKD66FSK I	Cu	1400-4000	6.6	PMSM	45-150	25-82	Up to 1.95	163	8.0	
HKD75FSK I	Cu	1400-4000	7.5	PMSM	52-170	28-93	Up to 1.95	163	8.0	
HKD86FSK I	Cu	1400-4000	8.6	PMSM	60-190	32-102	Up to 1.95	163	8.0	
HKD93FSK I	Cu	1400-4000	9.3	PMSM	70-210	38-115	Up to 1.95	163	8.0	
HKD10FSK I	Cu	1400-4000	10.5	PMSM	83-235	44-123	Up to 1.95	163	8.0	CCC
HKD12FSK I	Cu	1400-4000	11.5	PMSM	95-270	50-146	Up to 1.95	163	8.0	CCC

### Z系列变频 Z Series VSC

HXZ150FSM	Al	1200-4200	6.5	PMSM	42-150	23-80	Up to 1.90	145	6.9	-
HXZ170FSM	Al	1200-4200	7.0	PMSM	50-170	26-92	Up to 1.90	145	6.9	-
HXZ200FSM	Al	1200-4200	8.6	PMSM	56-200	30-103	Up to 1.90	145	6.9	-
HXZ220FSM	Al	1200-4200	9.2	PMSM	68-220	36-120	Up to 1.90	145	6.9	-
HXZ240FSM	Al	1200-4200	9.5	PMSM	75-240	39-125	Up to 1.90	145	6.9	-
HDZ150FSM	Al	1200-4200	6.5	PMSM	42-150	25-88	Up to 1.80	145	6.3	-
HDZ170FSM	Al	1200-4200	7.0	PMSM	50-170	27-98	Up to 1.80	145	6.3	-
HDZ200FSM	Al	1200-4200	8.6	PMSM	56-200	30-110	Up to 1.80	145	6.3	-
HDZ220FSM	Al	1200-4200	9.2	PMSM	68-220	40-132	Up to 1.80	145	6.3	-

Picture5 Mbsm Dot Pro : [www.mbsm.pro](http://www.mbsm.pro)

Mbsm\_dot\_pro\_private\_PDF\_catalog\_zelTélécharger  
COMPRESSEUR ZEL HML170A AU R600A LBP 1/6HP 9.5CM3



REDMI NOTE 9  
AI QUAD CAMERA

WHIRLPOOL , COMPRESSEUR R600 ,1/8 HP  
, HKK80AA, LBP Compressor, Top  
Efficiency , 220-240V 50Hz

Category: Technologie,Tester ok

written by [www.mbsm.pro](http://www.mbsm.pro) | 2 April 2020





PictureS Mbsm Dot Pro : [www.mbsm.pro](http://www.mbsm.pro)

WHIRLPOOL , COMPRESSEUR R600 , 1/8 HP , HKK80AA

R600a • 220-240 V • 50 Hz • KAPPA

Compressor	Code number	Application	CECOMAF Capacity [W] T <sub>c</sub> =55°C, T <sub>liq</sub> =55°C, T <sub>suc</sub> =32°C Evaporating temperature [°C]						CECOMAF						ASHRAE Capacity [W] T <sub>c</sub> =54.4°C, T <sub>liq</sub> =32.2°C, T <sub>suc</sub> =32.2°C Evaporating temperature [°C]					
									LBP rating point -25°C / 55°C		MBP rating point -10°C / 55°C		HBP rating point 5°C / 55°C							
			-35	-15	-5	0	10	15	Cooling capacity	COP	Cooling capacity	COP	Cooling capacity	COP	-35	-15	-5	0	10	15
									[W]	[W/W]	[W]	[W/W]	[W]	[W/W]						
HMK80AA	15950000	LBP	55	170				102	1.18	211	1.68			67	207					
HMK95AA	15460700	LBP	67	207				125	1.20	257	1.72			81	253					
HMK12AA	16236200	LBP	82	239				149	1.21	292	1.66			100	291					
HTK55AA	16122700	LBP	32	119				69	1.20	150	1.79			39	146					
HTK70AA	16106100	LBP	44	150				87	1.26	185	1.85			54	182					
HTK80AA	16068300	LBP	55	170				102	1.26	212	1.83			67	207					
HTK95AA	16068200	LBP	71	207				126	1.29	258	1.82			86	252					
HTK12AA	16111600	LBP	82	239				149	1.29	292	1.77			100	291					
HKK55AA	16124400	LBP	32	120				69	1.37	150	2.00			39	146					
HKK70AA	16124500	LBP	44	148				87	1.40	186	1.98			54	181					
HKK80AA	16072100	LBP	55	170				102	1.40	212	1.99			67	207					
HKK95AA	16049700	LBP	69	207				126	1.42	256	1.95			84	252					
HKK12AA	16065900	LBP	82	239				149	1.42	292	1.93			100	291					
HXK55AA	15650400	LBP	36	122				72	1.45	152	2.00			44	149					
HXK70AA	15690400	LBP	47	149				88	1.47	186	2.02			57	181					
HXK80AA	15621800	LBP	58	173				105	1.50	214	2.05			71	210					
HXK95AA	15592900	LBP	73	209				129	1.51	258	2.05			89	255					
HXK12AA	15593100	LBP	83	245				152	1.50	300	2.04			101	299					
HZK95AA	16313100	LBP	73	208				128	1.58	257	2.15			89	254					

PictureS Mbsm Dot Pro : [www.mbsm.pro](http://www.mbsm.pro)

# Samsung SD162H-L1U2 Compressor, Rscr, 1/5 Hp, 6.99Cc, MANUFACTURERS, FACTORY, SUPPLIERS FROM CHINA

Category: Technologie, Tester ok  
 written by [www.mbsm.pro](http://www.mbsm.pro) | 2 April 2020





PictureS Mbsm Dot Pro : [www.mbsm.pro](http://www.mbsm.pro)

HP 1/5 HP Samsung SD162C-L1U2

2. Function Specifications Temp Range □ 32□ ~ 40□ Capacity Cubic Feet 7 Climate Class N Max Ambient Temp □ 89.6□ Min Ambient Temp □ 59□ Castors 5" 4EA Shelves 2EA Doors 1EA Exterior Finish Stainless Steel Inte ...

# MK 1 62 Q - L 1 U A

① ② ③ ④ ⑤ ⑥ ⑦ ⑧

## 1) Compressor model identification

NUMBER	MEANING
① Series	CD, SD, MD, SK, MK, HK, MSS, MSA, MSE, ENV, MKV, MSV
② Refrigerant	1 : R 134a (LBP) 4 : R 600a (LBP) 6 : R 134a (HBP)
③ Displacement (cc/Rev.) x 10	24 : 2.40cc, 30 : 2.93cc, 37 : 3.71cc, 43 : 4.38cc, 50 : 5.21cc, 51 : 5.12cc, 52 : 5.21cc, 60 : 6.16cc, 62 : 6.16cc, 70 : 6.99cc, 72 : 7.21cc, 80 : 8.19cc, 82 : 8.19cc, 83 : 8.19cc, 88 : 8.80cc, 90 : 9.07cc, A1 : 10.68cc, A2 : 12.13cc, A3 : 12.52cc, A5 : 15.32cc
④ Rated voltage and frequency	B : 220V ~ 60Hz C : 115V ~ 60Hz D : 115-127V ~ 60Hz E : 100V ~ 50/60Hz G : 220-240V ~ 50Hz, 220V ~ 60Hz H : 200-220V ~ 50Hz, 220V ~ 60Hz K : 200-220V ~ 50Hz P : 127V ~ 60Hz Q : 220-240V ~ 50Hz A : variable for BLDC
⑤ Application	L/R/S : Low Back Pressure H : High Back Pressure
⑥ Cooling type	0 : Oil cooling 1 : Static 2 : Fan cooling
⑦ Motor type	B/C/X : BLDC S : PTC or Current-CSIR U : PTC-RSCR (Optional RSIR) W : PTC-CSR Y : Current-RSIR Z : PTC-RSIR
⑧ Option	

## 2) Serial number

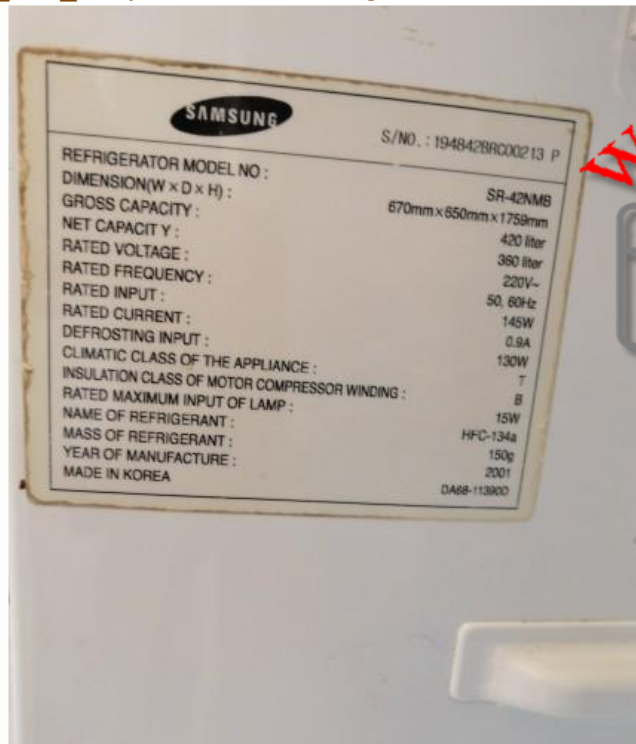
- ① Model code
- ② Production line
- ③ Year : 05 → Y, 06 → L, 07 → P, 08 → Q, 09 → S, 10 → Z, 11 → B, 12 → C, 13 → D, 14 → F
- ④ Month : 1 → Jan, 2 → Feb, ... A → Oct, B → Nov, C → Dec
- ⑤ Serial number



Private Picture Copyright : WWW.MBSM.PRO

Mbsm\_dot\_pro\_private\_PDF\_Sd162h-11uaTélécharger

Mbsm\_dot\_pro\_private\_PDF\_compressor-catalogue-2015Télécharger



Private Picture Copyright : WWW.MBSM.PRO

MODEL:  
SR-42NMB

POWER:  
220V/50,60Hz

COMPRESSOR:  
SD162H-L1U2

BOM NAME:  
S428GCSWHL/ZAM

SERIAL NO:  
194842BRC00213 P



Private Picture Copyright : WWW.MBSM.PRO



Private Picture Copyright : WWW.MBSM.PRO

COMPRESOR ACC GL80AN R134 1/5,

# Cubigel Compressors LBP , Hermetic, Freezing, Tb/Cooling/hmbp

Category: Technologie, Tester ok

written by [www.mbsm.pro](http://www.mbsm.pro) | 2 April 2020





PictureS Mbsm Dot Pro : [www.mbsm.pro](http://www.mbsm.pro)

Type: Hermetic piston compressors  
Producer: ACC

Series: HMBP/tb

Model: GL80AN

#### General data

Refrigerant: R134a  
Discharge element: C  
Cooling: S  
Maximum ambient temperature [°C]: 43

#### Compressor's data

Cylinder capacity [cm<sup>3</sup>]: 8,1  
Displacement [m<sup>3</sup>/h]: 1,4  
Weight [kg]: 10,6  
Oil charge [cm<sup>3</sup>]: 445  
Oil type: ISO VG 19 ESTER

#### Engine's data

Engine type: RSIR  
Power [KM]: 1/5  
Starting element: LST  
Power supply: 220V 50Hz  
Voltage range: 170-242  
Locked rotor current [A]: 18  
Running winding resistance (25°C) [Ω]: 5,81  
Starting winding resistance (25°C) [Ω]: 11,01

#### Electrical data

Relays: 3003  
Shielding element: MRP321LZ, T0683, AF11FI  
Starting capacitor volume [μF]:

#### Connections

	milimeters	inches
Suction tube:	6,5	
Service tube:	6,5	
Discharge tube:	4,9	

GL80AN (1)Download

---

# mbsm.pro , Compresseur Aspera , Embraco ,NEK2168GK , R404a/R507 , LBP ,3/4 HP,nominal output: 707 W

Category: Technologie,Tester ok  
written by www.mbsm.pro | 2 April 2020



Picture5 Mbsm Dot Pro : [www.mbsm.pro](http://www.mbsm.pro)

EMBRACO is a company specialized in cooling solutions and world leader in the hermetic compressor market. Our mission: provide innovative solutions for a better quality of life, always attentive to technological excellence and sustainability. Technological leadership, operational excellence and sustainability are some of the pillars which ensure the EMBRACO differential over other companies in the world market. Its products are now considered the favorite leading home appliance manufacturers by major automakers and are spotlighted by manufacturers of commercial refrigeration equipment. With global operations and production capacity exceeding 34 million units a year, the company offers solutions that are differentiated for their innovation and low energy consumption. Its 11.500 employees work in factories and offices located in Brazil

(headquarters), China, Italy, Slovakia, Mexico, the United States and Russia. Energy efficiency is constantly sought in the processes, products and relationships with the communities where it operates. Our company is the absolute leader in this segment, being able to offer products that meet the most restrictive international standards regarding energy consumption. As a worldwide leader, EMBRACO tries to anticipate market changes, and in doing so, our company is in a state of permanent transformation. We continuously assess our processes in order to maintain our leadership within the industry and promote growth, without forgetting the pillars of our organization.

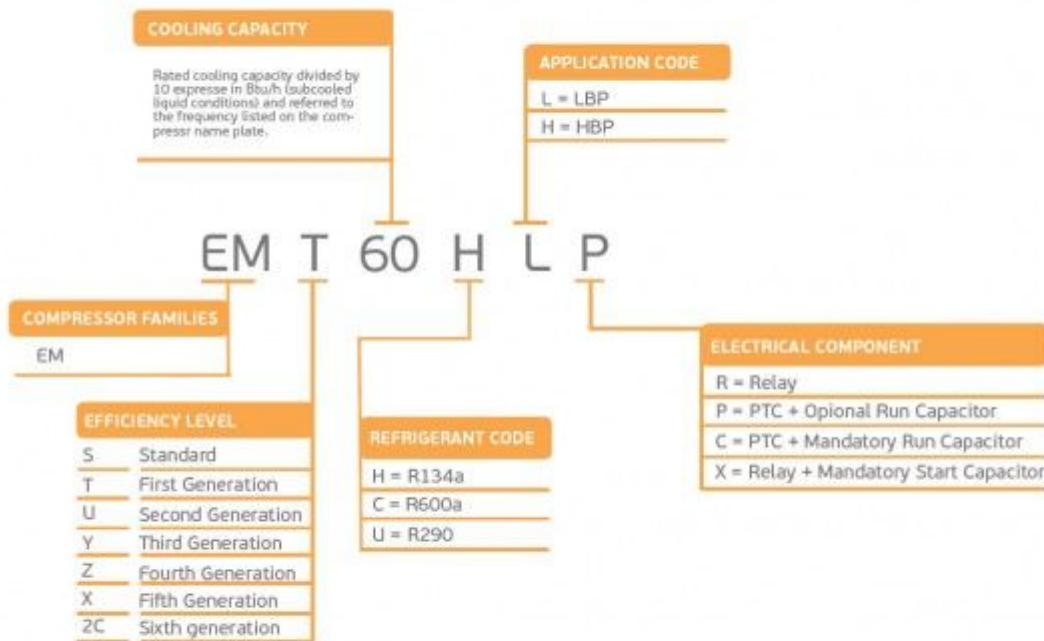
**Compressor ASPERA NEK2168GK | NEK 2168 GK**

Refrigerant	R404/R507
Working range[stC] <b>LBP</b>	-40 to -10
Nominal capacity [W] (evaporating temperature -23,3C, Condensing temperatur +54,4C)	688
Power supply	220-240V 50Hz
Engine type	CSIR
Displacement [cm³]	14,28
Weight [kg]	11,6
Evaporating temperature +55 C	

<b>Evaporating Temperature</b>	<b>Cooling Capacity +/-5%</b>	<b>Power Consumption +/-5%</b>	<b>Current Consumption +/-5%</b>	<b>Gas Flow Rate +/-5%</b>	<b>Efficiency +/-7%</b>			
°C	(kcal/h)	(W)	(Btu/h)	(W)	(A)	(kg/h)	(kcal/Wh)	(W/W)
-40	226	263	897	370	3,46	6,01	0,61	0,71
-35	309	359	1.224	435	3,57	8,22	0,71	0,82
-30	413	481	1.640	506	3,73	11,06	0,82	0,95
-25	541	629	2.146	584	3,95	14,52	0,93	1,08
-20	691	803	2.740	668	4,21	18,64	1,03	1,20
-15	863	1.004	3.424	759	4,53	23,43	1,14	1,32
-10	1.058	1.230	4.197	856	4,90	28,92	1,24	1,44

Refrigerant: R404A, R507

		R404A / R507							
		LBP	VOLT. FREQ.	COOL. CAP. [W]	DISPL. [cc]	MBP	VOLT. FREQ.	COOL. CAP. [W]	DISPL. [cc]
NE NEK	NEK2117GK	A	125	4,51	NEK6144GK	A	550	4,51	
	NEK2121GK	A	151	5,44	NEK6165GK	A	743	6,20	
	NEK2125GK	A	182	6,20	NEK6181GK	A	841	7,28	
	NEK2130GK	A	213	7,37	NEK6210GK	A / N	1.005	8,77	
	NEK2134GK	A / N	248	8,77	NEK6213GK	A	1.337	12,11	
	NEK2150GK	A	329	12,11	NEK6217GK	A / N	1.164	14,28	
	NEK2168GK	A	378	14,28					
	NEK2172GK	C	819	16,80					



embraco **NEK**



**R404A** **LBP**

PictureS Mbsm Dot Pro : [www.mbsm.pro](http://www.mbsm.pro)



Picture5 Mbsm Dot Pro : [www.mbsm.pro](http://www.mbsm.pro)

mbsm.pro , Compresseur Aspera , Embraco NEK2168GK , R404A , LBP ,3/4 HP  
Compresseur hermetique de Aspera – Embraco NEK2168GK – R404A  
3/4 HP  
220-240V 50 Hz  
Cylindrée = 14.3 CM3  
APPLICATIONS = LBP  
Moteur type: CSR

---

## [www.mbsm.pro](http://www.mbsm.pro) , when capacitor explodes , Pictures

Category: Pictures,Technologie,Tester ok  
written by [www.mbsm.pro](http://www.mbsm.pro) | 2 April 2020



pyright : WWW.MBSM.PRO

A capacitor is a device used to store an electric charge, consisting of one or more pairs of conductors separated by an insulator.

Unexpectedly the electrolytic capacitors explodes with huge sound and sometime it smoke.

Get started , how to explode a capacitor ???

All capacitors have a maximum voltage and their destruction depends upon the internal construction. Explosions are understood only by delving into the internal construction of electrolytic capacitors – the primary culprit.

Most small value capacitors are simple sandwiches of conductor and insulator and when the voltage exceeds the dielectric strength of the insulation, they short out and burn, crack, pop, open, or smoke. Explosions are rare for these. Popping open is more likely. Their failure is self evident either visually or by failure to function in the circuit.

Most large value capacitors in order to be as small in physical size as possible, have to get the conductive plates of the capacitor as close together as possible and at the same time not so small that the voltage rating is impractical.

It is for this reason that the family of electrolytic capacitors was developed. The trick they use to get high capacity with small separations and reasonable voltage is that they use the “anodizing” of chemical electrolysis on one surface and a water based electrolyte for the other surface. Take one apart and see. Notice that when a conductive metal is “anodized” by electrochemical process it turns into a dull film that is rather tough and is an insulator. This means that the actual conductive plate of the capacitor has this film entirely between itself and the other plate.

Then the other plate uses a trick too. There’s a water base solution soaked into a paper separator. Now if there was no water, the paper would be the dielectric of a normal capacitor separating the plates. But not here. Here the water has an alkali added to become a fair conductor. And as a liquid it soaks right into the surface structures of the capacitor. So it’s not the paper thickness at all – and not even the insulating surface on the other plate, but the inner recesses of the anodized surface that determine the dielectric distances.

So the operating voltage that a capacitor can tolerate depends upon how thick this anodized film is. And that is a function of it’s manufacture. Now there is a most useful characteristic that tells us we are nearing the max voltage, called leakage.

Here is a way you can check this out. Put in series, a test electrolytic capacitor (polarize it correctly), a variable power supply, a microammeter, and

a 1 meg resistor (to limit and protect the meter). From zero as you increase the voltage there will be no current initially, then as you approach the spec op voltage, there will start a small leakage current. Since you have a limiting resistor here, you can increase the voltage without damage. continuing to increase the voltage discovers an increasing leakage current. It is a matter of practice how much safety you apply between the rating and the actual voltage of the circuit.

You can now see how it is that an electrolytic capacitor fails, it is not a voltage breakdown of the dielectric material, but the increase of leakage current that is troublesome. A rising leakage means heat which will boil the water and make steam – that's the explosion process.

This is explosion as occasional failure of the few. But there is a more spectacular explosion process – it's explosion by mistake – namely being installed backward. In such a case, the anodizing chemistry is reversed and rather rapidly, the anodized film starts to reverse, and quickly thins out at a weak spot in the rather large effective film area of the capacitor. Then we have short circuit currents and steam generation rather quickly. This sort of explosion usually fills the space (the casing or the whole room if exposed) with little shreds of aluminum foil and alkali soaked paper.

This insightful solution is most successful to achieve capacitors with large values in small spaces, but has a lot of lesser characteristics as the price to pay.

The worst limit, is storage. Electrolytic capacitors store very poorly, and the voltage rating can reduce substantially as the internal chemistry deteriorates. Some equipment manufacturers recommend that capacitors stored for a few years have their inner anodizing conditions restored by simply putting them to the spec voltage for a day to restore full spec.

At the least, if you replace capacitors with old stock, and it didn't explode when power was restored, be aware that it may not reach it's spec capacity value for a few hours. A capacitor in use will always be maintained by the voltage in the circuit you use it in.

When electrolytics are used without the circuit supplying a maintenance voltage to keep the anodized film that all depends upon, such as in speaker cross over applications that have no sustaining DC, then the values of the capacitor will deteriorate at least at storage rates, and if AC currents are substantial, even faster.

[mbsm-dot-pro-capacitor-explodes- Pictures-A.jpg \(4 MB\)](#)



Picture Copyright : WWW.MBSM.PRO

mbsm-dot-pro-capacitor-explodes- Pictures-A.jpg (1 MB)



pyright : WWW.MBSM.PRO



pyright : WWW.MBSM.PRO

mbsm-dot-pro-capacitor-explodes- Pictures-B.jpg (3 MB)



mbsm-dot-pro-capacitor-explodes- Pictures-B.jpg (1 MB)



pyright : WWW.MBSM.PRO



pyright : WWW.MBSM.PRO

mbsm-dot-pro-capacitor-explodes- Pictures-C.jpg (3 MB)



Picture Copyright : WWW.MBSM.PRO

mbsm-dot-pro-capacitor-explodes- Pictures-C.jpg (1 MB)



pyright : WWW.MBSM.PRO



pyright : WWW.MBSM.PRO

mbsm-dot-pro-capacitor-explodes- Pictures-D.jpg (3 MB)



pyright : WWW.MBSM.PRO

mbsm-dot-pro-capacitor-explodes- Pictures-D.jpg (1 MB)



pyright : WWW.MBSM.PRO



pyright : WWW.MBSM.PRO

mbsm-dot-pro-capacitor-explodes- Pictures-F.jpg (2 MB)



Picture Copyright : WWW.MBSM.PRO

mbsm-dot-pro-capacitor-explodes- Pictures-F.jpg (748 KB)

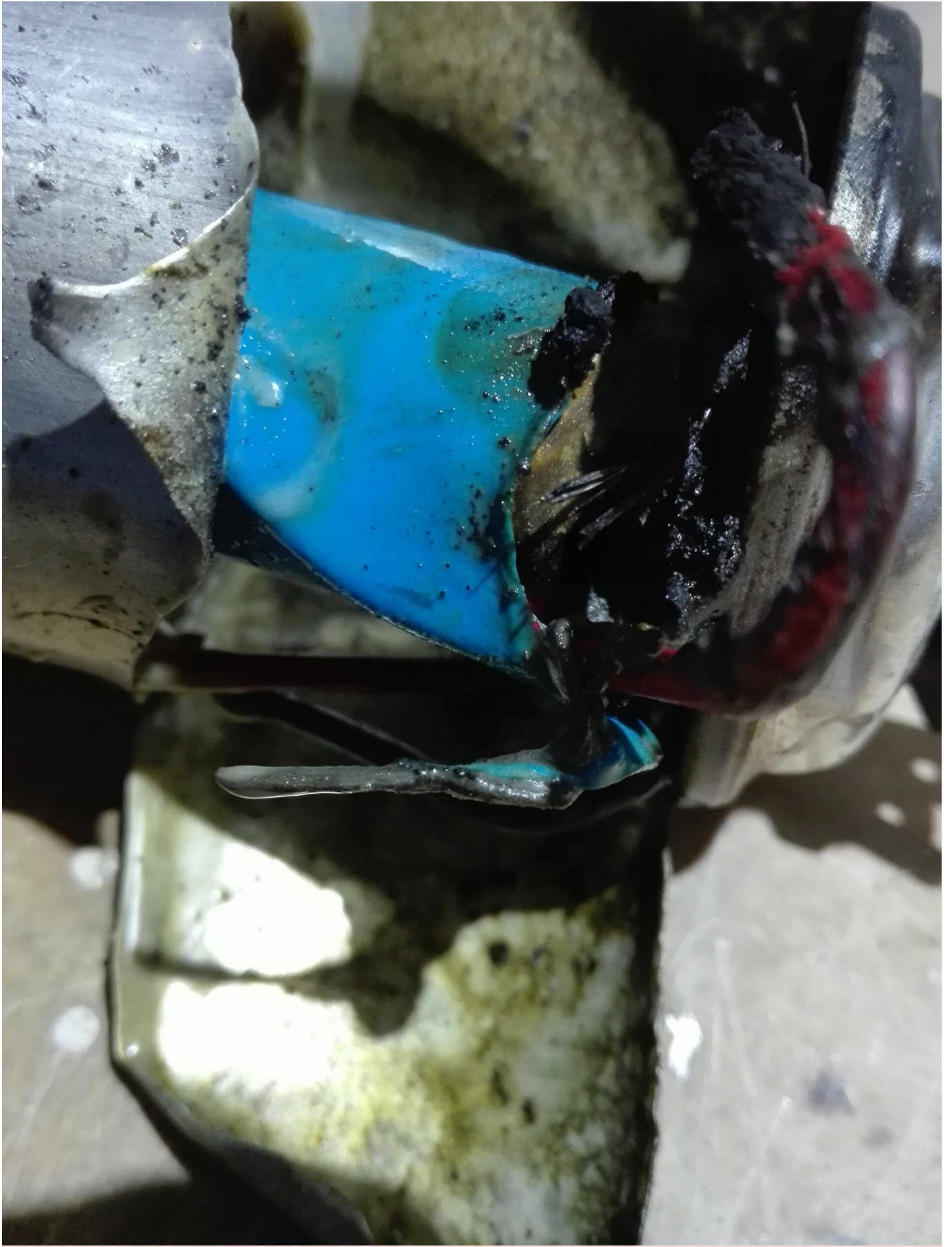


pyright : WWW.MBSM.PRO



pyright : WWW.MBSM.PRO

mbsm-dot-pro-capacitor-explodes- Pictures-E.jpg (3 MB)



Private Picture Copyright © WWW.MBSM.PRO

mbsm-dot-pro-capacitor-explodes- Pictures-E.jpg (1 MB)



pyright : WWW.MBSM.PRO



pyright : WWW.MBSM.PRO

mbsm-dot-pro-capacitor-explodes- Pictures-G.jpg (2 MB)



mbsm-dot-pro-capacitor-explodes- Pictures-G.jpg (856 KB)



pyright : WWW.MBSM.PRO



pyright : WWW.MBSM.PRO

mbsm-dot-pro-capacitor-explodes- Pictures-H.jpg (2 MB)



Picture Copyright : WWW.MBSM.PRO

mbsm-dot-pro-capacitor-explodes- Pictures-H.jpg (690 KB)



pyright : WWW.MBSM.PRO



pyright : WWW.MBSM.PRO

mbsm-dot-pro-capacitor-explodes- Pictures-I.jpg (2 MB)



Picture Copyright : WWW.MBSM.PRO

mbsm-dot-pro-capacitor-explodes- Pictures-I.jpg (1 MB)



pyright : WWW.MBSM.PRO



pyright : WWW.MBSM.PRO

mbsm-dot-pro-capacitor-explodes- Pictures-J.jpg (2 MB)



mbsm-dot-pro-capacitor-explodes- Pictures-J.jpg (739 KB)

WWW.MBSM.PRO



pyright : WWW.MBSM.PRO



pyright : WWW.MBSM.PRO

---

جدول بأنواع الزيوت ، Mbsm.pro  
المناسبة لوسائط وضواغط التبريد و  
اللزوجة المناسبة لكل نوع من الضواغط ،  
table of the types of oils suitable  
for the appropriate refrigeration and  
liquefied media and compressors for  
each type of compressor

Category: Arabe,Solutions,Technologie,Tester ok  
written by www.mbsm.pro | 2 April 2020

جدول بأنواع الزيوت المناسبة لوسائط وضواغط التبريد حسب اللزوجة

A	B	C	D	E	F	G	H	I	J	K	L
وسيط التبريد		Ramçoo	درجة حرارة البخار		ISO VG الزيت بجانبه قيمة اللزوجة						
ASHRAE تسمية	الصفة	الخطا لفر	من (°C)	الى (°C)	Piston	بستوني	Scrws	سكرو	سكرو	سكرو	طرد مركزي
R12	CFC		-40	40+	MN 32			MN 68	PAO 400		MN 68
R502	CFC		-50	20-	MN 32	AB 32		MN 68	AB 100		MN 68
R22	HCFC		-25	10+	MN 32	AB 32	PAO 68	MN 68	AB 100		MN 68
R22	HCFC		-30	10+		AB 32	PAO 68		AB 100		MN 68
R22	HCFC		-40	10+		AB 32			AB 100		MN 68
R22	HCFC		-50	10+		AB 32			AB 68		
R123	HCFC	R11	0	20+							
R124	HCFC	R114	0	80+	MN 68			AB 100			
R401a	HCFC	R12	-20	10+	MN 32	AB 32					
R402a	HCFC	R502	-50	30-	AB 32						
R408a	HCFC	R502	-50	30-	AB 32			AB 100			
R409a	HCFC	R12	-20	10+	MN 32	AB 32					
R290	C3H8(propane)		-30	20+	MN 68			PG 150			PG 150
R600/R600a	Butane /Iso But		-30	20+	MN 68			PG 150			PG 150
R717	NH3(ammonia)		-30	10+	MN 68	AB 32	PAO/AB 68	MN 68	PAO 68	PAO/AB 68	MN 68
R717	NH3(ammonia)		-50	10+		AB 32	PAO/AB 68		PAO 68	PAO/AB 68	MN 68
R744	CO2		-55	10-							
R23	HFC		-100	40-	POE 22						
R134a	HFC	R12	-20	10+	POE 22			POE 220			POE 68
R134a	HFC	R12	-30	10+	POE 22			POE100			POE 68
R404a	HFC	R502	-40	30-	POE 22			POE 220			POE 68
R404a	HFC	R502	-50	30-	POE 22			POE100			POE 68
R407C	HFC	R22	0	10+	POE 68			POE 220			
R410a	HFC		-45	10+	POE 22			POE100			POE 68
R410a	HFC		-25	10+	POE 32			POE 220			POE 68
R410b	HFC		-25	10+	POE 22			POE 220			POE 68
R417a	HFC	R22	-15	15+	POE 68			POE 220			POE 68
R422a	HFC	R22	-45	5-	POE 22			POE100			POE 68
R422a	HFC	R22	-25	5-	POE 32			POE 220			POE 68
R422d	HFC	R22	-45	10+	POE 22			POE100			POE 68
R422d	HFC	R22	-25	10+	POE 32			POE 220			POE 68
R427a	HFC	R22	-40	10+	POE 22			POE100			POE 68
R427a	HFC	R22	-20	10+	PAO 400			POE 220			POE 68
R507/507a	HFC		-40	0	POE 22			POE100			POE 68

PictureS Mbsm Dot Pro : www.mbsm.pro

Table of oil types suitable for appropriate refrigeration and liquefied media and compressors for each type of compressor

PAO (Polyalphaolefin) Polyamphalene oil

MN (Mineral Naphthenic) Oil

AB (Alkylbenzene) Petrol oil

POE (Polyol Ester) Polyethylene oil

PG (Polyglycol) Polyglycol

www.mbsm.pro , EJECTEUR DAB, Pompe Monobloc Série Pa Double Aspiration Autoamorçante

Category: Plomberie, Tester ok

written by mahdi miled | 2 April 2020



Private Picture Copyright : WWW.MBSM.PRO

Électropompe centrifuge autoamorçante double aspiration du type jet, appropriée pour l'aspiration jusqu'à 50m de profondeur. Corps de pompe et support en fonte, roue en noryl ou sur demande en laiton. Injecteur type P20 standard de 4" et 2". Température maxi. du liquide pompé : 50°C. Pression maxi. de fonctionnement : 8 bars.

Descriptif produit

Pompe pour aspirations profondes

Plage de fonctionnement: jusqu'à 4,3 m<sup>3</sup>/h

Plage de température du liquide: de -0°C à 40°C pour autres applications. de 0°C à +35°C pour usage domestique Liquide pompé: propre, ne contenant pas de corps solides ou abrasifs, non visqueux, non agressif, non cristallisé et chimiquement neutre.

Température ambiante maximum: + 40°C

Pression de service maximum: 6 bar (600 kPa) pour DP 82 DP 102 8 bar (800 kPa) pour DP 151 – DP 251

Indice de protection: IP 44 (IP 55 au bornier)

Classe d'isolement: F

EJECTEUR-DAB-mbsm-dot-pro (1).jpg (64 KB)



PictureS Mbsm Dot Pro : [www.mbsm.pro](http://www.mbsm.pro)

Private Picture Copyright : [WWW.MBSM.PRO](http://WWW.MBSM.PRO)

EJECTEUR-DAB-mbsm-dot-pro (1).jpg (14 KB)



pyright : [WWW.MBSM.PRO](http://WWW.MBSM.PRO)



pyright : [WWW.MBSM.PRO](http://WWW.MBSM.PRO)

EJECTEUR-DAB-mbsm-dot-pro (8).jpg (8 KB)



PictureS Mbsm Dot Pro : [www.mbsm.pro](http://www.mbsm.pro)

Private Picture Copyright : [WWW.MBSM.PRO](http://WWW.MBSM.PRO)

EJECTEUR-DAB-mbsm-dot-pro (8).jpg (6 KB)



pyright : [WWW.MBSM.PRO](http://WWW.MBSM.PRO)



pyright : [WWW.MBSM.PRO](http://WWW.MBSM.PRO)

EJECTEUR-DAB-mbsm-dot-pro (2).jpg (1 MB)



Richard MBSM dot Pro  
www.mbsm.pro  
Photo Picture Copyright : WWW.MBSM.PRO

EJECTEUR-DAB-mbsm-dot-pro (2).jpg (465 KB)



pyright : WWW.MBSM.PRO



pyright : WWW.MBSM.PRO

EJECTEUR-DAB-mbsm-dot-pro (3).jpg (1 MB)



Richard MBSM dot Pro www.mbsm.pro  
Photo Picture Copyright : WWW.MBSM.PRO

EJECTEUR-DAB-mbsm-dot-pro (3).jpg (467 KB)



pyright : WWW.MBSM.PRO

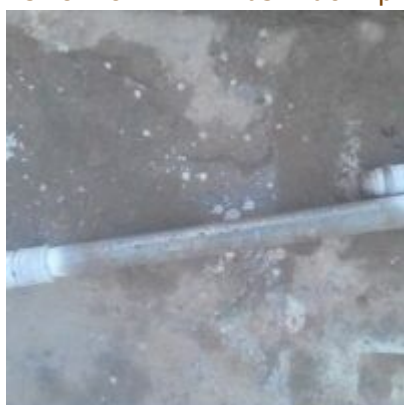


pyright : WWW.MBSM.PRO

EJECTEUR-DAB-mbsm-dot-pro (4).jpg (1 MB)



EJECTEUR-DAB-mbsm-dot-pro (4).jpg (408 KB)



pyright : WWW.MBSM.PRO



pyright : WWW.MBSM.PRO

EJECTEUR-DAB-mbsm-dot-pro (5).jpg (1 MB)



Richard MBSM dot Pro www.mbsm.pro  
Photo Picture Copyright : WWW.MBSM.PRO

EJECTEUR-DAB-mbsm-dot-pro (5).jpg (524 KB)



pyright : WWW.MBSM.PRO



pyright : WWW.MBSM.PRO

EJECTEUR-DAB-mbsm-dot-pro (6).jpg (1 MB)



Richard MBSM dot Pro www.mbsm.pro  
Picture Copyright: WWW.MBSM.PRO

EJECTEUR-DAB-mbsm-dot-pro (6).jpg (318 KB)



pyright : WWW.MBSM.PRO



pyright : WWW.MBSM.PRO

EJECTEUR-DAB-mbsm-dot-pro (7).jpg (1 MB)



Richard M. Smith, D. Phil. www.mbsm.pro  
Photo Picture Copyright: WWW.MBSM.PRO

EJECTEUR-DAB-mbsm-dot-pro (7).jpg (451 KB)



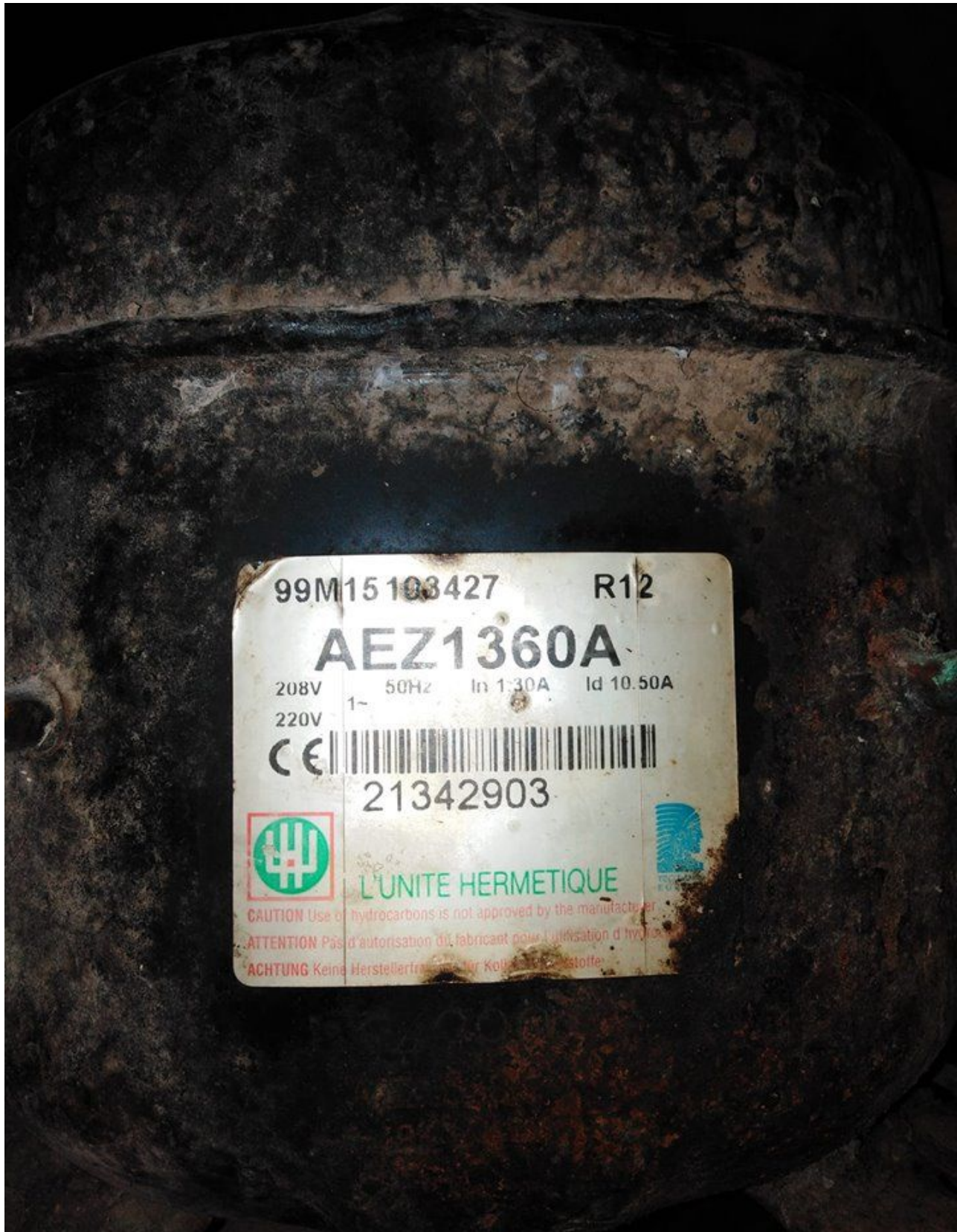
pyright : WWW.MBSM.PRO



pyright : WWW.MBSM.PRO

www.mbsm.pro, AEZ1360A, Kirby,  
Tecumseh, Compressors ,low back,  
pressure, models, 240v/50HT , 1PH ,  
1/5Hp , Gaz 12A

Category: Solutions,Technologie,Tester ok  
written by www.mbsm.pro | 2 April 2020



PictureS Mbsm Dot Pro : [www.mbsm.pro](http://www.mbsm.pro)

Points forts : Compresseur aez1360a pour réfrigérateur fagor FAGOR  
MA-10CA562COMP-QZQAZ