

230V ,compressor, Danfoss ,SC15MFX ,
made by Secop, R134a ,refrigeration,
CSIR , Moteur HP , R134a ,3 / 8HP
,HMBP ,1PH

Category: Technologie,Tester ok
written by www.mbsm.pro | 30 April 2020



Private Picture : www.MBSM.PRO

PictureS Mbsm Dot Pro : www.mbsm.pro

230V ,compressor, Danfoss ,SC15MFX , made by Secop, R134a ,refrigeration, CSIR ,
Moteur HP , R134a ,3 / 8HP ,HMBP ,1PH

AEA3440YXC ,Tecumseh Product Co ,HBP
,Moteur HP , 1PHase, 1/3HP , High
Back Pressure ,R134a ,220-240V ~ 50Hz
,Reciprocating Compressor ,996W

Category: Technologie,Tester ok
written by www.mbsm.pro | 30 April 2020



Private Picture : www.MBSM.PRO

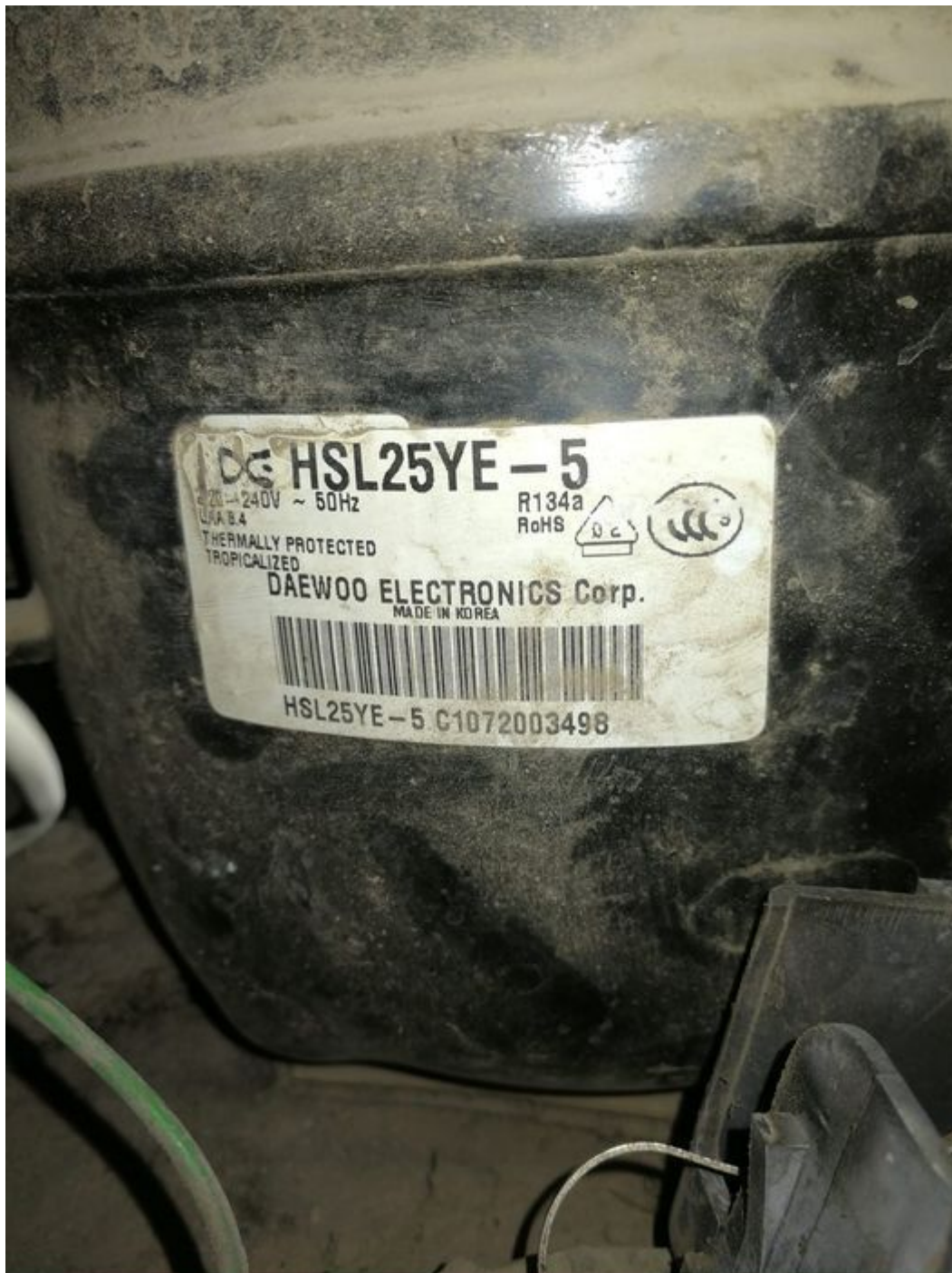
PictureS Mbsm Dot Pro : www.mbsm.pro

AEA3440YXC ,HBP ,Moteur HP , 1HP, 1/HP , High Back Pressure ,R134a ,220-240V ~ 50Hz ,Reciprocating Compressor

DAEW00 Compressor , HSL25YE-5, 1/4HP, 1PH, R134a ,220-240V 50Hz, Puissance frigorifique, 204 W ,690 BTU

Category: Technologie,Tester ok

written by www.mbsm.pro | 30 April 2020

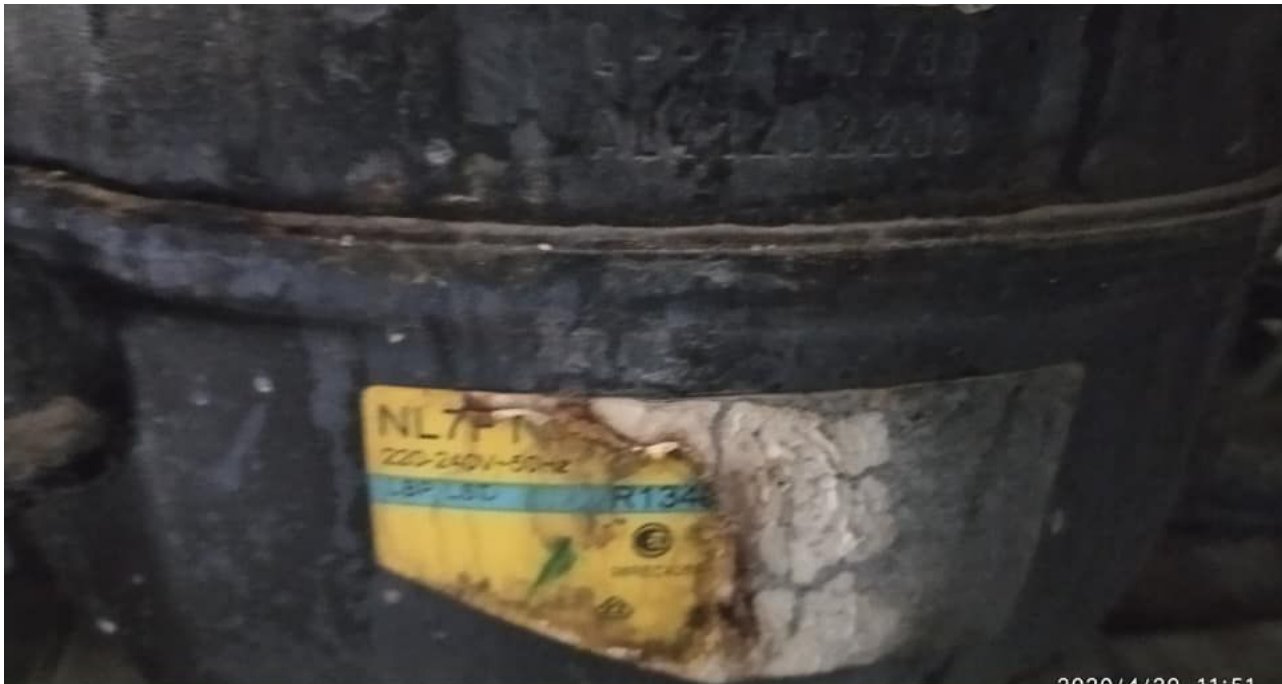


Private Picture Copyright : WWW.MBSM.PRO

DAEWOO Compressor , HSL25YE-5, 1/5HP , 1PH, R134a ,220-240V 50Hz,Puissance frigorifique 176 W

Danfoss ,Fridge Compressor ,NL7FT , 1/4 HP ,R134a

Category: Non classé,Technologie,Tester ok
written by www.mbsm.pro | 30 April 2020



PictureS Mbsm Dot Pro : www.mbsm.pro

Danfoss ,Fridge Compressor ,NL7FT , 1/4 HP ,R134a

Compressor ELECTROLUX, CUBIGEL
,GP12TB ,Hermetic piston ,ACC ,HMBP ,
moteur HP , 3/8 HP++ , 1/2 hp- , 1PH ,
R134A , Pression 1.7 Bar , 220V

Category: compressor,Technologie,Tester ok
written by www.mbsm.pro | 30 April 2020

	Model	Refr.	HP
▶ <input type="checkbox"/>	<u>GL45PB</u>	HMBP::R134a	1/6
▶ <input type="checkbox"/>	<u>GL45PB</u>	HMBP::R134a	1/6
▶ <input type="checkbox"/>	<u>GL45TB</u>	HMBP::R134a	1/6
▶ <input type="checkbox"/>	<u>GL60PB</u>	HMBP::R134a	1/5
▶ <input type="checkbox"/>	<u>GL60TB</u>	HMBP::R134a	1/5
▶ <input type="checkbox"/>	<u>GL80PB</u>	HMBP::R134a	1/5
▶ <input type="checkbox"/>	<u>GL80TB</u>	HMBP::R134a	F
▶ <input type="checkbox"/>	<u>GL90TB</u>	HMBP::R134a	1/4
▶ <input type="checkbox"/>	<u>GP12TB</u>	HMBP::R134a	3/8

Picture5 Mbsm Dot Pro : www.mbsm.pro

Private Picture Copyright : WWW.MBSM.PRO

Compressor ELECTROLUX, CUBIGEL GP12TB ,Hermetic piston ,ACC ,HMBP , moteur HP , 3/8 HP , 1PH , R134A , Pression 1.7 Bar

The best way, to clean the capillary ,from oils, and repair Blockage, in

cooling with Gaz R22

Category: Technologie, Tester ok

written by www.mbsm.pro | 30 April 2020



PictureS Mbsm Dot Pro : www.mbsm.pro

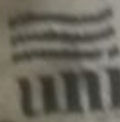
The best way to clean the capillary from oils and repair Blockage in cooling with Gaz R22

ZEL , Refrigeration , Compressor
, Gml200a , 152w , 1/5 Hp
, 220/240V/50Hz , R134a

Category: Technologie, Tester ok

written by www.mbsm.pro | 30 April 2020

MADE IN EGYPT



unionaire SPECIFICATIONS

MODEL	RD 310
REFRIGERANT AMOUNT	R134a / 100g
RATED INPUT OF LAMP	15 W
RATED VOLTAGE	220-240V~
RATED CURRENT	1.1A
RATED FREQUENCY	50Hz
CLIMATE CLASS	T
POWER INPUT	130 W
GROSS VOLUME	310 L
CAPACITY (NET)	290 L
GROSS VOLUME cabinet	227
Net volume cabinet	210
PRODUCTION DATE	JULY/2108

Private Picture Copyright : WWW.MBSM.PRO

ZEL , Refrigeration , Compressor , Gml200a , 152w , 1/5 Hp , 220/240V/50Hz , R134a

HFC refrigerant , hydrofluorocarbons , is the third generation, of fluorinated refrigerants

Category: Technologie

written by www.mbsm.pro | 30 April 2020



PictureS Mbsm Dot Pro : www.mbsm.pro

HFC refrigerant (hydrofluorocarbons) is the third generation of fluorinated refrigerants. Recognized as Ozone Depleting Potential (ODP) and Global Warming Potential (GWP), they represent a greener alternative to CFC and HCFC. Refrigerants in this group are applicable to refrigeration plants and air conditioning units designed specifically for their use. In addition, they can serve as drop-in replacements for older CFCs and HCFCs. The HFC group includes the following products:

R23
R32
R134a
R404A
R407A
R407C
R407F (PERFORMAX LT)
R410A
R417A (ISCEON M059)
R422A (ISCEON M079)
R422D (ISCEON M029)
R423A (ISCEON 39TC)
R424A (RS-44)
R427A (Forane 427A)
R428A (RS-52)
R434A (RS-45)
R437A (ISCEON M049Plus)
R438A (ISCEON M099)
R442A (RS-50)
R449A (OPTEON XP40)
R507A
R508B (SUVA 95)
ISCEON M089
R1234yf

مركبات الهيدروفلوروكربون) هي الجيل الثالث من المبردات المفلورة (HFC (GWP) وإمكانية الاحترار العالمي (ODP) معترف بها على أنها إمكانات استنفاد الأوزون . فهي تمثل بديلاً أكثر خضرة لمركبات الكربون الكلورية فلورية ومركبات الكربون الهيدروكلورية فلورية. تنطبق المبردات في هذه المجموعة على محطات التبريد ووحدات تكييف الهواء المصممة خصيصاً لاستخدامها. بالإضافة إلى ذلك ، يمكن أن تكون بمثابة بدائل منسدة لمركبات الكربون الكلورية فلورية ومركبات الكربون الهيدروكلورية فلورية القديمة.

:المنتجات التالية HFC تتضمن مجموعة

R23
R32
R134a
R404A
R407A
R407C
R407F (PERFORMAX LT)
R410A
R417A (ISCEON M059)
R422A (ISCEON M079)
R422D (ISCEON M029)
R423A (ISCEON 39TC)
R424A (RS-44)
R427A (Forane 427A)
R428A (RS-52)
R434A (RS-45)
R437A (ISCEON M049Plus)
R438A (ISCEON M099)

R442A (RS-50)
R449A (OPTEON XP40)
R507A
R508B (SUVA 95)
ISCEON M089
R1234yf

Le réfrigérant HFC (hydrofluorocarbures) est la troisième génération de réfrigérants fluorés. Reconnus comme potentiel d'appauvrissement de la couche d'ozone (ODP) et potentiel de réchauffement planétaire (GWP), ils représentent une alternative plus verte au CFC et au HCFC. Les réfrigérants de ce groupe sont applicables aux installations de réfrigération et aux unités de climatisation conçues spécifiquement pour leur utilisation. De plus, ils peuvent servir de remplacements directs pour les CFC et HCFC plus anciens.

Le groupe HFC comprend les produits suivants:

R23
R32
R134a
R404A
R407A
R407C
R407F (PERFORMAX LT)
R410A
R417A (ISCEON M059)
R422A (ISCEON M079)
R422D (ISCEON M029)
R423A (ISCEON 39TC)
R424A (RS-44)
R427A (Forane 427A)
R428A (RS-52)
R434A (RS-45)
R437A (ISCEON M049Plus)
R438A (ISCEON M099)
R442A (RS-50)
R449A (OPTEON XP40)
R507A
R508B (SUVA 95)
ISCEON M089
R1234yf

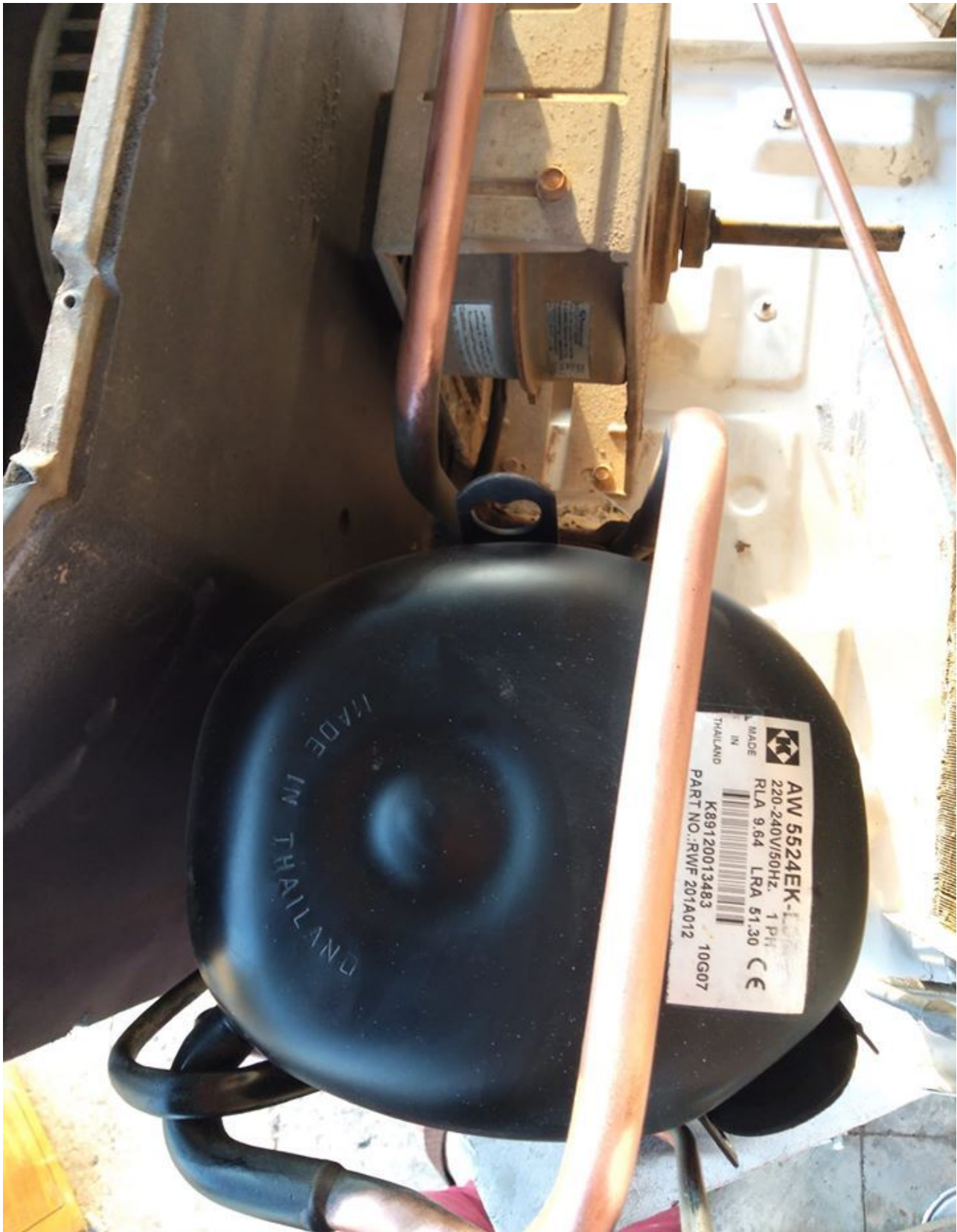




PictureS Mbsm Dot Pro | www.mbsm.pro

HERMETIC ,AW5524EK ,Compressor ,
20,950 BTU ,230/1/60 R-22 ,: 220-240
V/50 Hz., 1 Phase , 1.745833333 TON

Category: Technologie,Tester ok
written by www.mbsm.pro | 30 April 2020



PictureS Mbsm Dot Pro : www.mbsm.pro

Electrical : 220-240 V/50 Hz. 1 Phase
Nominal Performance
Capacity 6,140 / – Watts
20,950 / – BTU/Hr
5,280 / – Kcal/Hr
Power Input 2,089 / – Watts
Locked Rotor Amps 51.30 / – Amps

Max Continuous Current – / – Amps

Rated Load Amps 9.64 / – Amps

COP 2.94 / – Watts / Watts

EER 10.03 / – BTU/W-Hr

Testing Conditions

Condensing Temperature 54.40 °C 129.9 °F

Evaporating Temperature 7.20 / – °C 45.0 / – °F

Liquid Temperature 46.10 °C 115.0 °F

Return Gas Temperature 35.00 °C 95.0 °F

Ambient Temperature 35.00 °C 95.0 °F

Application

Evaporating Temp. Range HBP, A/C @ 0.00 ° C to 13.00 ° C
(32.0° F to 55.4° F)

Heat Pump -23.30 ° C to 13.00 ° C
(-9.9° F to 55.4° F)

Refrigerant R22

Refrigerant Flow Control Capillary Tube

Compressor Cooling Fan

Compressor and Motor data

Compressor Type Reciprocating

Displacement 43.10 cc.

Oil Type Mineral Oil

Oil Charge 964 cc.

Motor Type P.S.C ; 2 Pole 2,850 / – r/m

Voltage Range 198-264/- Volts 50/- Hz.

Winding Resistance at 25 ° C

Start 2.52 Ohms

Run 1.24 Ohms

Weight with Oil 27.72 Kg.

Weight with Oil and Accessories 28.05 Kg.

Electrical Components

Motor Protector

Type Internal Overload

Model Number 4042KGE661-2

Open / Close 125-135 / 50-70 ° C

1st Cycle trip at 25 ° C 50.00 Amps(main) 30.00 Amps(start)

Motor Starter

Type Potential Relay

Model Number 4043KGE681-4(RVA3G6D)

Pick Up (max.) 180.00-195.00 Volts

Drop Out (min.) 40.00-90.00 Volts

Terminal Cover KGM 901-3

Start Capacitor 88-106 µF 330 VAC.

Disch Resistor for Start Cap –

Run Capacitor 45 µF 370/440 VAC.

Mounting Kit

Rubber Grommet 4007KGM905-2

Sleeve Grommet 4023KGM903-2

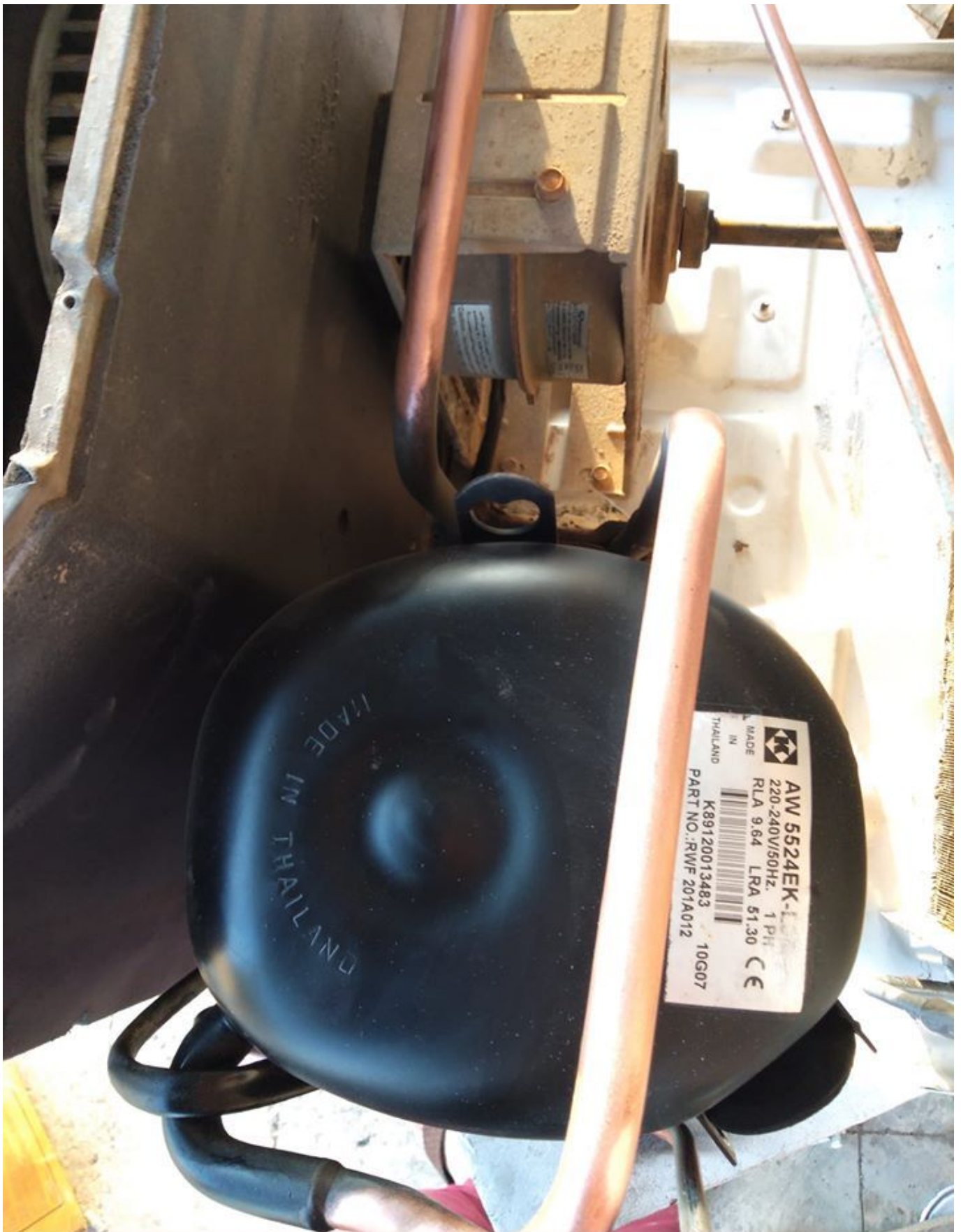
Washer –

Since we are constantly improving our product , the

specification are subject to change without notice.

REV. DATE C / N No.

ECN 01-04-14 ECN 0515/13





dot Pro : www.mbsm.pro

DOCUMENTATION PDF

Mbsm_dot_pro_private_pictureAW5524EKTélécharger

D110C24GAX5 , PANASONIC ,RSIR, Serie D, Reciprocating ,Compressors , 298 w , 1/3 HP , R134a ,220v 50Hz

Category: Technologie,Tester ok

written by www.mbsm.pro | 30 April 2020

displacement cm ³	W (cooling)	BTU/HR	K Cal/hr	HP	Model	number
5.1	135	461	116	1/6	D51C10RAW5	1
5.1	135	461	116	1/6	D51C90RAW5	2
5.7	141	481	121	1/6	D57C10RAW5	3
5.7	141	481	121	1/6	D57C13RAX5	4
6.6	160	546	138	1/5	D66C10RAW5	5
6.6	151	515	130	1/5	D66C10RAX5	6
7.7	186	635	160	1/5	D77C10RAW5	7
7.7	186	635	160	1/5	D77C10RAX5	8
9.1	227	774	195	1/4	D91C10RAW5	9
9.1	227	774	195	1/4	D91C10RAX5	10
11.0	298	1017	256	1/3	D51C21RAX5	11
11.0	298	1017	256	1/3	D110C21RA25	12
11.0	298	1017	256	1/3	D110C21RBX5	13
11.0	298	1017	256	1/3	D110C24GAX5	14



Private Picture Copyright : WWW.MBSM.PRO

D110C24GAX5 , PANASONIC ,RSIR, Serie D, Reciprocating ,Compressors , 298 w , 1/3 HP , R134a ,220v 50Hz