

Cosse et Fiche plat

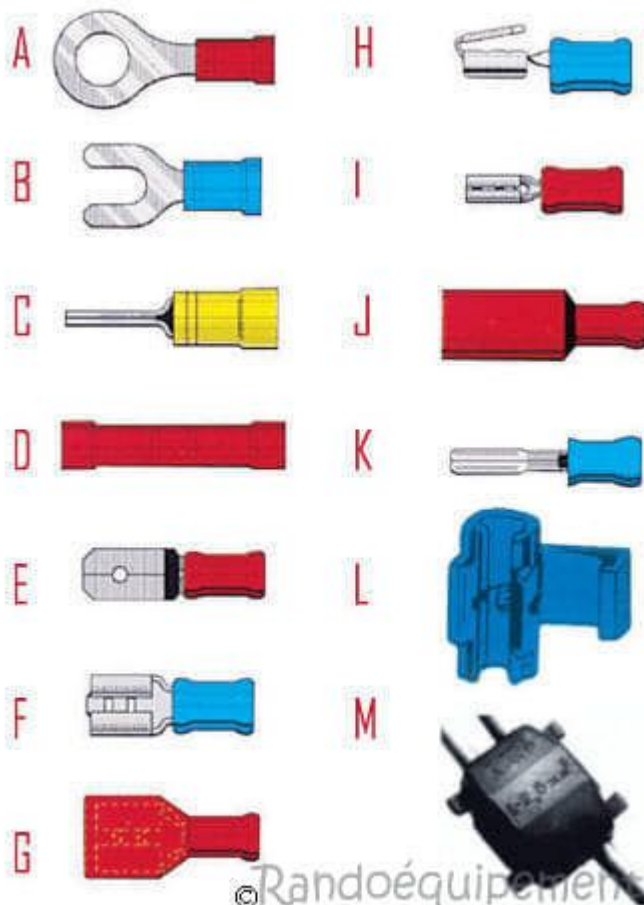
Category: Technologie

written by www.mbsm.pro | 7 April 2020



PictureS Mbsm Dot Pro : www.mbsm.pro

On trouve également sur le marché des **cosses** pour batterie qui diffèrent selon leur surface de contact avec la batterie. Dans cette catégorie d'accessoires de connexion, on peut trouver des boîtes de dérivation, du ruban adhésif ou des bornes et des dominos.



© Randoéquipement

PictureS Mbsm Dot Pro : www.mbsm.pro



PictureS Mbsm Dot Pro : www.mbsm.pro



PictureS Mbsm Dot Pro : www.mbsm.pro



Mbsm Dot Pro : www.mbsm.pro



Mbsm Dot Pro : www.mbsm.pro



PictureS Mbsm Dot Pro : www.mbsm.pro



PictureS Mbsm Dot Pro : www.mbsm.pro



PictureS Mbsm Dot Pro : www.mbsm.pro



PictureS Mbsm Dot Pro : www.mbsm.pro



Mbsm Dot Pro : www.mbsm.pro



Mbsm Dot Pro : www.mbsm.pro

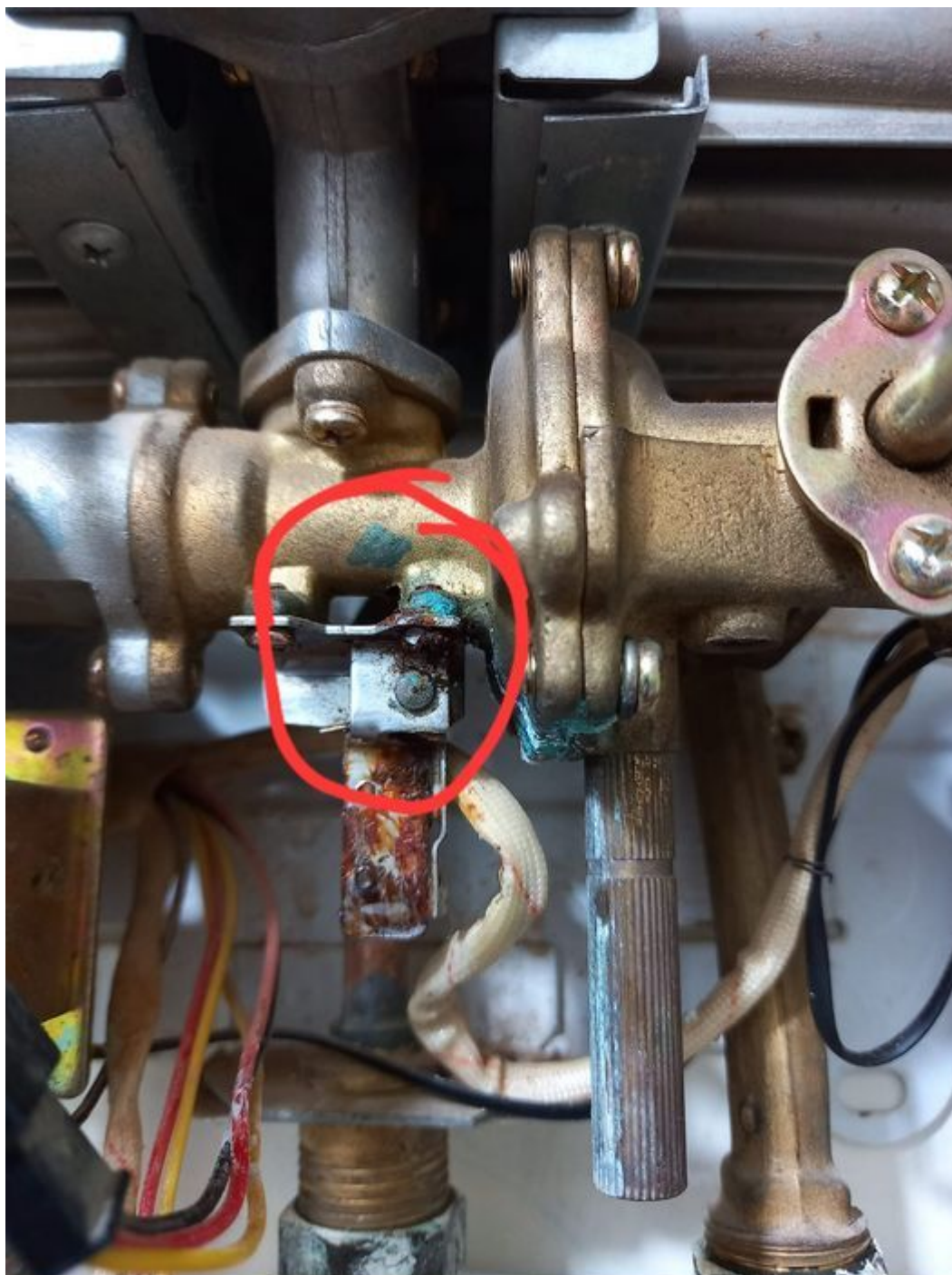


PictureS Mbsm Dot Pro : www.mbsm.pro

Core Mécanique du chauffe-eau Électronique 10 litre

Category: Technologie

written by www.mbsm.pro | 7 April 2020



Private Picture Copyright : WWW.MBSM.PRO

Core Mécanique du chauffe-eau Électronique 10 litre

Compressor ,TECUMSEH 1/4HP ,THG1374YS, R134A ,tm271-ms-393

Category: Technologie,Tester ok
written by www.mbsm.pro | 7 April 2020



Picture5 Mbsm Dot Pro : www.mbsm.pro

Compressor ,TECUMSEH 1/4HP ,THG1374YS, R134A ,tm271-ms-393

Compressors , LG ,MA62LBJG ,1/5 HP, Gaz R134A

Category: Technologie,Tester ok
written by www.mbsm.pro | 7 April 2020



R 134a

RoHS



LG

MA62LBJG

1PH 220-240V 50Hz

THERMALLY PROTECTED
Made by LG Electronics



CM62705NL063027DL

Capillary	Ampair	Wattage	Codes	Hp Power
0.028	0.75	63	NS36LAEG	1\10
0.033	0.81	77	MSA43LBEG	1\8
0.033	1.12	116	MA53LAEG	1\6
0.033	1.12	142	MA57LBEG	1\6+
0.036	1.35	160	MA62LCEG	1\5
0.040	1.35	174	MA69LCEG	1\5+
0.040	1.4	200	MA72LCEG	1\4
0.042	1.6	210	MA88LCEG	1\3
0.042	1.6	279	MA98LAEM	1\3+

Private Picture Copyright : WWW.MBSM.PRO

LG air compressor for refrigerators MA62LAEP uses voltage 220V (220V mini air compressor), at 50Hz, 180W (174W)-cooling capacity using motor Lg kx62laeg refrigerator compressor

Capacité de refroidissement: 596 Btu (0,234 HP)

Source d'alimentation: 220V, 1Pha, 50Hz

Réfrigérant: Gaz R134A

Origine: Chine

Description du produit

Frozen Joint Stock Company est spécialisée dans la fourniture de compresseurs LG, la distribution de compresseurs LG et l'installation de compresseurs LG pour le stockage à froid, les réfrigérateurs, les armoires de stockage, les climatiseurs, les ensembles de compresseurs à condenseur, l'assurance qualité. Qualité et meilleur prix.

Le compresseur LG MA62LAEP est un mini compresseur à piston de **220 V** , conçu pour un fonctionnement compact et silencieux, avec le couple le plus élevé (HST) pour aider la machine à fonctionner efficacement et à réduire le bruit. Capacité de réfrigération de 0,15 HP, adaptée aux réfrigérateurs, armoires de stockage, chambre froide. **Le compresseur LG MA62LAEP** utilise du gaz réfrigérant R134A, fabriqué en Inde, avec des certificats CO et CQ complets pour l'assurance qualité.

Spécifications du **compresseur LG MA62LAEP**

Modèle		MA62LAEP
	HP	0,234
Capacité de refroidissement	W	174
	Btu / h	596
COP	w / w	1,3
EER	Btu / WH	4.44
Source d'alimentation		220V, 1Pha, 50Hz
Débit d'aspiration	cc	6.2
Le volume	Kg	9.2
Réfrigérant		Gaz R134

Fabriqué en

La Chine

Vous cherchez à acheter des **compresseurs LG MA62LAEP** , en plus des compresseurs, nous fournissons et distribuons également des produits, équipements et fournitures de réfrigération, y compris **des unités intérieures** , des unités extérieures industrielles, du gaz réfrigéré, des tuyaux en cuivre, de l'isolation isolation, leds de stockage à froid, stores de chambre froide et accessoires de porte de chambre froide, y compris charnières de porte de chambre froide, joints de porte de chambre froide, et composants de porte de chambre froide, salles blanches, etc.



R 134a

RoHS



LG

MA62LBJG

1PH 220-240V 50Hz

THERMALLY PROTECTED
Made by LG Electronics



CM62705NL063027DL



Private Picture Copyright : WWW.MBSM.PRO

Mbsm_dot_pro_private_PDF_MA62LBJG-Refrigerator_Compressor_151207Télécharger

MA 69 L A E G

Series name

MA
MB
MC
MQ

Displacement
Ex) 69 = 6.9cc/rev.

Application category
L : R134a, LBP
H : R134a, HBP
N : R600a, LBP

Improvement order
A
B
C
D
E
F
H,K,J,M,N - AL-Wire

Motor type
G : RSIR, PTC
F : CSIR, PTC
M : RSCR, PT
H : CSR, PTC
P : CSIR, RELAY

Rated voltage & Frequency

A : 110V 50/60Hz	P : 110V 50Hz
B : 220V 50/60Hz	Q : 110-115V 60Hz
C : 115V 60Hz	S : 200-220V 50Hz
D : 220V 60Hz	200V 60Hz
E : 220-240V 50Hz	T : 220-240V 50Hz
F : 127V 60Hz	220V 60Hz
J : 220V 50Hz	U : 110-127V 60Hz
K : 110V 60Hz	

Private Picture Copyright : WWW.MBSM.PRO

COMPRESSEUR ZEL , 200w , HDL200A, R600a, LBP , 1/4 hp

Category: Technologie, Tester ok
 written by www.mbsm.pro | 7 April 2020



Private Picture Copyright : WWW.MBSM.PRO

Model	Motor	Disp.	Power	Motor type	Freq.	Cooling capacity	Input power	Input power (RC)	COP	COP (RC)	Run capacitor	Height	Netweight
GDL145D	Cu	4.4	1/8	RSIR/RSCR	60	145	94	87	1.55	1.67	10	161	7.3
GDL175D	Cu	5.3	1/6	RSIR/RSCR	60	175	112	106	1.56	1.65	10	161	7.3
GML140A	Al	4.9	1/6	RSIR	50	140	112	0	1.25	0	0	152	6.3
GML160A	Al	5.7	1/6	RSIR	50	160	128	0	1.25	0	0	161	6.9
GML180A	Al	6.5	1/5	RSIR	50	180	144	0	1.25	0	0	161	7.1
GML200A	Al	7	1/5	RSIR	50	200	160	0	1.25	0	0	164	7.3
GML145D	Al	4.4	1/7	RSIR/RSCR	60	145	97	92	1.5	1.57	10	164	7.1
GML175D	Al	4.9	1/6	RSIR/RSCR	60	175	118	112	1.48	1.56	10	164	7.1
GPL175D*	Cu	4.9	1/7	CSCR	60	175		97		1.8	10	161	7.6
GXL175D	Cu	4.9	1/7	RSCR	60	175		101		1.73	10	164	7.6

PictureS Mbsm Dot Pro : www.mbsm.pro

TECHNICAL CHARACTERISTICS

SCHEME COMPRESSORS

OF

ELECTRIC DIAGRAMS

ASSEMBLY

TECHNICAL SCHEMES

Model	Motor	Speed range	Displ., cm ³	Motor type	Freq. hz	Cooling Capacity, w -23.3 °C/(+7.2 °C)*	Input Power, BT		COP, w/w		Run Capacitor, µF	Height, mm	Net Weight, kg	Type of cooling, S/F
							without RC	with RC	without RC	with RC				
HDL100A	Al	-	5,7	RSCR	50	98	-	60	-	1,64	2,5	161	6,9	-
HDL100A(I)	Cu/Al	-	5,7	RSCR	50	98	-	57	-	1,72	2,5	164	7,2	-
HDL125A	Al	-	7,0	RSCR	50	123	-	72	-	1,70	2,5	164	7,2	-
HDL125A (I)	Cu/Al	-	7,0	RSCR	50	123	-	69	-	1,79	2,5	164	7,2	-
HDL140A	Al	-	8,0	RSCR	50	140	-	80	-	1,74	2,5	164	7,2	-
HDL160A	Al	-	9,2	RSCR	50	160	-	90	-	1,77	3	164	7,2	-
HDL170A	Al	-	9,5	RSCR	50	172	-	101	-	1,70	4	164	7,2	-
HDL190A	Cu/Al	-	10,5	RSCR	50	185	-	106	-	1,75	4	164	7,2	-
HDL200A	Cu/Al	-	12,0	RSCR	50	200	-	118	-	1,70	4	164	7,2	-
HDL80A	Al	-	4,9	RSCR	50	80	-	49	-	1,62	2	161	6,9	-
HML100A	Al	-	5,7	RSCR	50	98	-	71	-	1,39	2	152	6,3	-
HML125A	Al	-	7,0	RSCR	50	125	-	83	-	1,45	2	152	6,3	-
HML140A	Al	-	8,0	RSCR	50	140	-	90	-	1,56	3	152	6,3	-
HML170A	Al	-	9,5	RSCR	50	165	-	114	-	1,45	3	161	6,9	-
HML200A	Al	-	12,0	RSCR	50	200	-	138	-	1,45	4	164	7,2	-
HML80A	Al	-	4,9	RSCR	50	80	-	55	-	1,45	2	152	6,3	-
HPL100A	Cu	-	5,7	CSCR	50	100	-	51	-	1,96	2	161	7,3	-
HPL125A	Cu	-	7,0	CSCR	50	125	-	64	-	1,96	2	161	7,3	-
HPL140A	Cu	-	8,0	CSCR	50	145	-	74	-	1,95	2	161	7,3	-
HXL100A	Cu	-	5,7	RSCR	50	98	-	52	-	1,87	2	161	7,3	-
HXL125A	Cu	-	7,0	RSCR	50	123	-	65	-	1,90	2	161	7,3	-
HXL140A	Cu	-	8,0	RSCR	50	140	-	73	-	1,91	2	161	7,3	-
HXL170A	Cu	-	9,3	RSCR	50	175	-	93	-	1,88	2	161	7,3	-
HXL190A	Cu	-	10,5	RSCR	50	190	-	103	-	1,85	3	164	7,3	-
HXL190A (B)	Cu	-	12,0	RSCR	50	200	-	108	-	1,85	3	164	7,3	-
HXL50A	Cu	-	4,9	RSCR	50	53	-	31	-	1,70	1,5	164	7,3	-

PictureS Mbsm Dot Pro : www.mbsm.pro



Private Picture Copyright : WWW.MBSM.PRO

C 58708690

ZEL HDL200A 16-44
220-240V 50Hz
SUCTION >
8 269 0902610 5
ZANUSSI ELETTROMECCANICA COMPRESSOR







PictureS Mbsm Dot Pro : www.mbsm.pro

كباسات ZEL ومواصفاتها مع مقاسات الثلاجات والفریزارات المختلفة

موديل الثلاجة	الحجم بالقدم 3	الحجم باللتر	قدرة الضاغط							
			R134a			R600a				
			Model	W	HP	Model	W	HP		
LBP										
كباسات التجميد										
Domestic single door 	4	5	113	160	GML70G	72	1/12	HMM70A	70	1/12
	6	7	170	198	GML70G	72	1/10	HMM70A	70	1/10
	8	9	226	254	GML90G	94	1/8	HMM90A	90	1/8
	9	13	283	370	GML125G	125	1/6	HML125AT	130	1/6
Domestic double door 	9	12	226	340	GML140AT	148	1/5	HML140AT	140	1/5
	13	17	370	481	GML200AT	195	1/4	HML200A	200	1/4
	17	22	509	623	GTH88AA	240	1/3	HKD14AA	240	1/3
Upright and chest freezer 	4	6	113	120	GML125G	125	1/6	HML125AT	130	1/6
	6	8	198	226	GML140AT	148	1/5	HML140AT	140	1/5
	8	12	254	340	GML200AT	195	1/4	HML200A	200	1/4
	12	18	370	509	GTH88AA	240	1/3	HKD14AA	240	1/3

PictureS Mbsm Dot Pro : www.mbsm.pro

GML70G,
GML90G,
GML125G,
HMM70A,
HMM90A,
HML125AT,
GML140AT
GML200AT,
GTH88AA,
HML140AT,
HML200A,
HKD14AA,
GML125G,
GTH88AA,

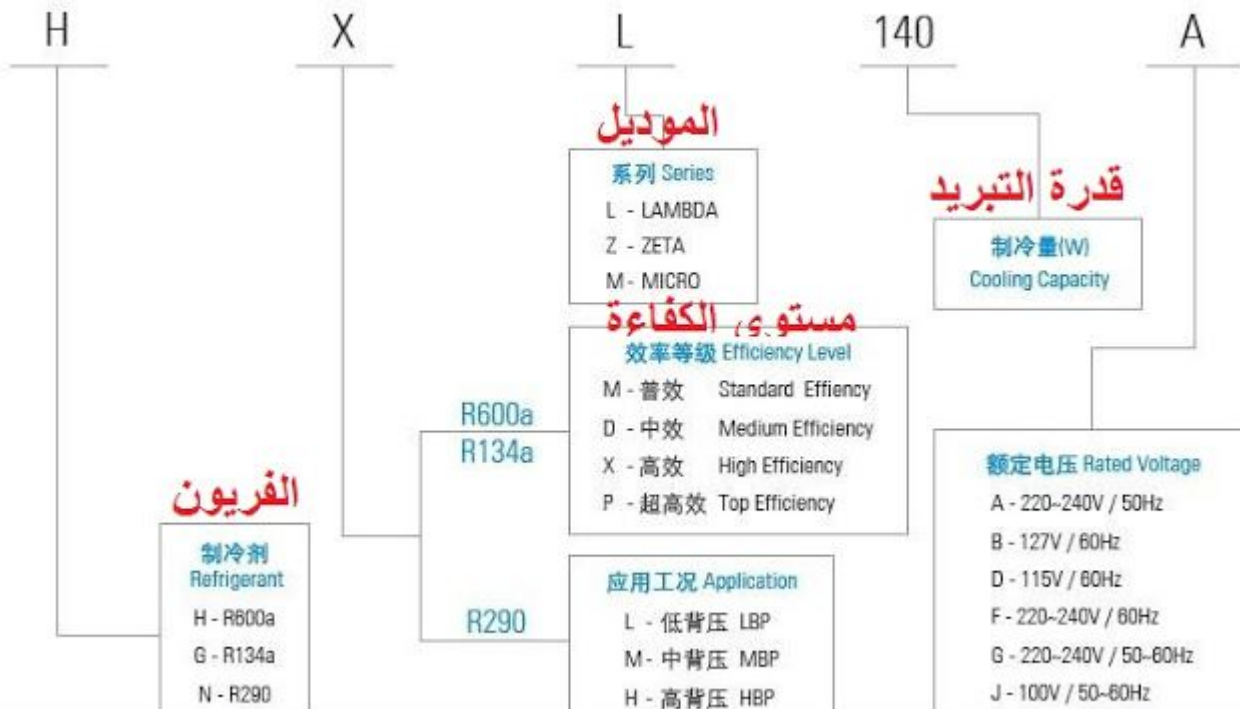
GDL145D,
GDL175D,
GML140A,
GML160A,
GML180A,
GML200A,
GML145D,
GML175D,
GPL175D*,
GXL175D,
GXL200D,

R600a**مواصفات قياسات التجميد LBP**

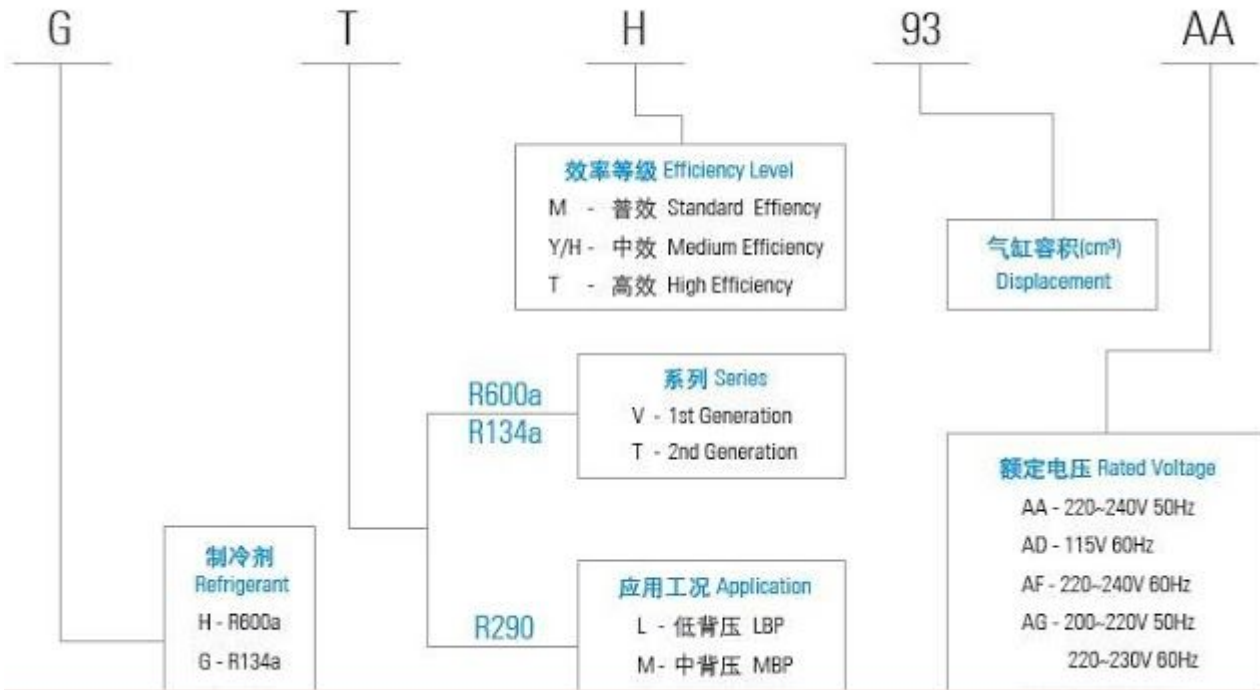
Model الموديل	Voltage الفولت	Hz التردد	Cooling Capacity سعة التبريد - القدرة التبريدية		
			W	HP	
HMM70A	220 - 240	50	70	0.094	1/10
HMM80A	220 - 240	50	80	0.107	1/10
HMM90A	220 - 240	50	90	0.121	1/8
HMM100A	220 - 240	50	100	0.134	1/8
HML100A	220 - 240	50	103	0.138	1/8
HML125A	220 - 240	50	121	0.162	1/6
HML125AT	220 - 240	50	130	0.174	1/6
HML140AT	220 - 240	50	140	0.188	1/6
HML155A	220 - 240	50	155	0.208	1/5
HML170AT	220 - 240	50	170	0.228	1/5
HML190A	220 - 240	50	190	0.255	1/4
HML200A	220 - 240	50	200	0.268	1/4

R134a**كباسات التجميد LBP**

Model الموديل	Voltage الفولت	Hz التردد	Cooling Capacity سعة التبريد - القدرة التبريدية		
			W	HP	
GML70G	220 - 240	50 - 60	72	0.097	1/12
GML80G	220 - 240	50 - 60	80	0.107	1/10
GML90G	220 - 240	50 - 60	94	0.126	1/8
GML110AT	220 - 240	50	113	0.151	1/7
GML125G	220 - 240	50 - 60	122	0.164	1/6
GML140G	220 - 240	50 - 60	136	0.182	1/6
GML140AT	220 - 240	50	148	0.198	1/5
GML180G	220 - 240	50 - 60	162	0.217	1/5
GML200AT	220 - 240	50	195	0.261	1/4
GTH88AA	220 - 240	50	240	0.322	1/3
GTH93AA	220 - 240	50	260	0.349	1/3
GTM93AA	220 - 240	50	280	0.375	3/8
GTM10AA	220 - 240	50	300	0.402	3/8+

PictureS Mbsm Dot Pro : www.mbsm.pro**Lambda/Zeta/Micro**PictureS Mbsm Dot Pro : www.mbsm.pro

Tau



PictureS Mbsm Dot Pro : www.mbsm.pro

كباسات ZEL ومواصفاتها مع مقاسات الثلاجات والفرزيرات المختلفة

موديل الثلاجة	الحجم بالقدم 3	الحجم باللتر	قدرة الضاغط							
			R134a			R600a				
			Model	W	HP	Model	W	HP		
LBP كباسات التجميد										
Domestic single door 	4	5	113	160	GML70G	72	1/12	HMM70A	70	1/12
	6	7	170	198	GML70G	72	1/10	HMM70A	70	1/10
	8	9	226	254	GML90G	94	1/8	HMM90A	90	1/8
	9	13	283	370	GML125G	125	1/6	HML125AT	130	1/6
Domestic double door 	9	12	226	340	GML140AT	148	1/5	HML140AT	140	1/5
	13	17	370	481	GML200AT	195	1/4	HML200A	200	1/4
	17	22	509	623	GTH88AA	240	1/3	HKD14AA	240	1/3
Upright and chest freezer 	4	6	113	120	GML125G	125	1/6	HML125AT	130	1/6
	6	8	198	226	GML140AT	148	1/5	HML140AT	140	1/5
	8	12	254	340	GML200AT	195	1/4	HML200A	200	1/4
	12	18	370	509	GTH88AA	240	1/3	HKD14AA	240	1/3

PictureS Mbsm Dot Pro : www.mbsm.pro



Variable Speed Range 变频系列

R600a

型号	电机	转速范围	排气量	电机类型	制冷量	输入功率	性能系数	高度	重量	认证
Model	Motor	Speed Range	Displ.	Motor Type	Cooling Capacity	Input Power	COP	Height	Net Weight	Certification
		rpm	cm ³		w	w	w/w	mm	kg	

220-240V/50Hz

T系列变频 T Series VSC

HKD66FSK	Al	1400-4000	6.6	PMSM	45-150	26-85	Up to 1.90	163	7.1	
HKD75FSK	Al	1400-4000	7.5	PMSM	52-170	29-96	Up to 1.90	163	7.1	
HKD86FSK	Al	1400-4000	8.6	PMSM	60-190	35-105	Up to 1.90	163	7.1	
HKD93FSK	Al	1400-4000	9.3	PMSM	70-210	40-125	Up to 1.90	163	7.1	
HKD10FSK	Al	1400-4000	10.5	PMSM	83-235	49-132	Up to 1.90	163	7.1	CCC
HKD12FSK	Al	1400-4000	11.5	PMSM	95-270	51-154	Up to 1.90	163	7.1	CCC
HKD66FSK I	Cu	1400-4000	6.6	PMSM	45-150	25-82	Up to 1.95	163	8.0	
HKD75FSK I	Cu	1400-4000	7.5	PMSM	52-170	28-93	Up to 1.95	163	8.0	
HKD86FSK I	Cu	1400-4000	8.6	PMSM	60-190	32-102	Up to 1.95	163	8.0	
HKD93FSK I	Cu	1400-4000	9.3	PMSM	70-210	38-115	Up to 1.95	163	8.0	
HKD10FSK I	Cu	1400-4000	10.5	PMSM	83-235	44-123	Up to 1.95	163	8.0	CCC
HKD12FSK I	Cu	1400-4000	11.5	PMSM	95-270	50-146	Up to 1.95	163	8.0	CCC

Z系列变频 Z Series VSC

HXZ150FSM	Al	1200-4200	6.5	PMSM	42-150	23-80	Up to 1.90	145	6.9	-
HXZ170FSM	Al	1200-4200	7.0	PMSM	50-170	26-92	Up to 1.90	145	6.9	-
HXZ200FSM	Al	1200-4200	8.6	PMSM	56-200	30-103	Up to 1.90	145	6.9	-
HXZ220FSM	Al	1200-4200	9.2	PMSM	68-220	36-120	Up to 1.90	145	6.9	-
HXZ240FSM	Al	1200-4200	9.5	PMSM	75-240	39-125	Up to 1.90	145	6.9	-
HDZ150FSM	Al	1200-4200	6.5	PMSM	42-150	25-88	Up to 1.80	145	6.3	-
HDZ170FSM	Al	1200-4200	7.0	PMSM	50-170	27-98	Up to 1.80	145	6.3	-
HDZ200FSM	Al	1200-4200	8.6	PMSM	56-200	30-110	Up to 1.80	145	6.3	-
HDZ220FSM	Al	1200-4200	9.2	PMSM	68-220	40-132	Up to 1.80	145	6.3	-

Picture5 Mbsm Dot Pro : www.mbsm.pro

Mbsm_dot_pro_private_PDF_catalog_zelTélécharger
COMPRESSEUR ZEL HML170A AU R600A LBP 1/6HP 9.5CM3



REDMI NOTE 9
AI QUAD CAMERA

WHIRLPOOL , COMPRESSEUR R600 ,1/8 HP
, HKK80AA, LBP Compressor, Top
Efficiency , 220-240V 50Hz

Category: Technologie,Tester ok
written by www.mbsm.pro | 7 April 2020





PictureS Mbsm Dot Pro : www.mbsm.pro

WHIRLPOOL , COMPRESSEUR R600 , 1/8 HP , HKK80AA

R600a • 220-240 V • 50 Hz • KAPPA

Compressor	Code number	Application	CECOMAF Capacity [W] T _c =55°C, T _{liq} =55°C, T _{suc} =32°C Evaporating temperature [°C]						CECOMAF						ASHRAE Capacity [W] T _c =54.4°C, T _{liq} =32.2°C, T _{suc} =32.2°C Evaporating temperature [°C]					
									LBP rating point -25°C / 55°C		MBP rating point -10°C / 55°C		HBP rating point 5°C / 55°C							
			-35	-15	-5	0	10	15	Cooling capacity	COP	Cooling capacity	COP	Cooling capacity	COP	-35	-15	-5	0	10	15
									[W]	[W/W]	[W]	[W/W]	[W]	[W/W]						
HMK80AA	15950000	LBP	55	170				102	1.18	211	1.68			67	207					
HMK95AA	15460700	LBP	67	207				125	1.20	257	1.72			81	253					
HMK12AA	16236200	LBP	82	239				149	1.21	292	1.66			100	291					
HTK55AA	16122700	LBP	32	119				69	1.20	150	1.79			39	146					
HTK70AA	16106100	LBP	44	150				87	1.26	185	1.85			54	182					
HTK80AA	16068300	LBP	55	170				102	1.26	212	1.83			67	207					
HTK95AA	16068200	LBP	71	207				126	1.29	258	1.82			86	252					
HTK12AA	16111600	LBP	82	239				149	1.29	292	1.77			100	291					
HKK55AA	16124400	LBP	32	120				69	1.37	150	2.00			39	146					
HKK70AA	16124500	LBP	44	148				87	1.40	186	1.98			54	181					
HKK80AA	16072100	LBP	55	170				102	1.40	212	1.99			67	207					
HKK95AA	16049700	LBP	69	207				126	1.42	256	1.95			84	252					
HKK12AA	16065900	LBP	82	239				149	1.42	292	1.93			100	291					
HXK55AA	15650400	LBP	36	122				72	1.45	152	2.00			44	149					
HXK70AA	15690400	LBP	47	149				88	1.47	186	2.02			57	181					
HXK80AA	15621800	LBP	58	173				105	1.50	214	2.05			71	210					
HXK95AA	15592900	LBP	73	209				129	1.51	258	2.05			89	255					
HXK12AA	15593100	LBP	83	245				152	1.50	300	2.04			101	299					
HZK95AA	16313100	LBP	73	208				128	1.58	257	2.15			89	254					

PictureS Mbsm Dot Pro : www.mbsm.pro

Samsung SD162H-L1U2 Compressor, Rscr, 1/5 Hp, 6.99Cc, MANUFACTURERS, FACTORY, SUPPLIERS FROM CHINA

Category: Technologie, Tester ok
 written by www.mbsm.pro | 7 April 2020





PictureS Mbsm Dot Pro : www.mbsm.pro

HP 1/5 HP Samsung SD162C-L1U2

2. Function Specifications Temp Range □ 32□ ~ 40□ Capacity Cubic Feet 7 Climate Class N Max Ambient Temp □ 89.6□ Min Ambient Temp □ 59□ Castors 5" 4EA Shelves 2EA Doors 1EA Exterior Finish Stainless Steel Inte ...

MK 1 62 Q - L 1 U A

① ② ③ ④ ⑤ ⑥ ⑦ ⑧

1) Compressor model identification

NUMBER	MEANING
① Series	CD, SD, MD, SK, MK, HK, MSS, MSA, MSE, ENV, MKV, MSV
② Refrigerant	1 : R 134a (LBP) 4 : R 600a (LBP) 6 : R 134a (HBP)
③ Displacement (cc/Rev.) x 10	24 : 2.40cc, 30 : 2.93cc, 37 : 3.71cc, 43 : 4.38cc, 50 : 5.21cc, 51 : 5.12cc, 52 : 5.21cc, 60 : 6.16cc, 62 : 6.16cc, 70 : 6.99cc, 72 : 7.21cc, 80 : 8.19cc, 82 : 8.19cc, 83 : 8.19cc, 88 : 8.80cc, 90 : 9.07cc, A1 : 10.68cc, A2 : 12.13cc, A3 : 12.52cc, A5 : 15.32cc
④ Rated voltage and frequency	B : 220V ~ 60Hz C : 115V ~ 60Hz D : 115-127V ~ 60Hz E : 100V ~ 50/60Hz G : 220-240V ~ 50Hz, 220V ~ 60Hz H : 200-220V ~ 50Hz, 220V ~ 60Hz K : 200-220V ~ 50Hz P : 127V ~ 60Hz Q : 220-240V ~ 50Hz A : variable for BLDC
⑤ Application	L/R/S : Low Back Pressure H : High Back Pressure
⑥ Cooling type	0 : Oil cooling 1 : Static 2 : Fan cooling
⑦ Motor type	B/C/X : BLDC S : PTC or Current-CSIR U : PTC-RSCR (Optional RSIR) W : PTC-CSR Y : Current-RSIR Z : PTC-RSIR
⑧ Option	

2) Serial number

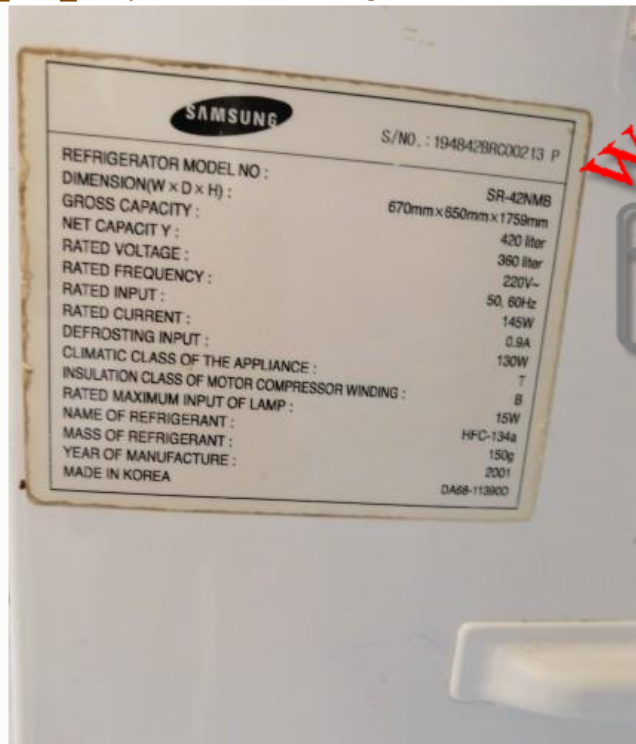
- ① Model code
- ② Production line
- ③ Year : 05 → Y, 06 → L, 07 → P, 08 → Q, 09 → S, 10 → Z, 11 → B, 12 → C, 13 → D, 14 → F
- ④ Month : 1 → Jan, 2 → Feb, ... A → Oct, B → Nov, C → Dec
- ⑤ Serial number



Private Picture Copyright : WWW.MBSM.PRO

Mbsm_dot_pro_private_PDF_Sd162h-11uaTélécharger

Mbsm_dot_pro_private_PDF_compressor-catalogue-2015Télécharger



Private Picture Copyright : WWW.MBSM.PRO

MODEL:
SR-42NMB

POWER:
220V/50,60Hz

COMPRESSOR:
SD162H-L1U2

BOM NAME:
S428GCSWHL/ZAM

SERIAL NO:
194842BRC00213 P



Private Picture Copyright : WWW.MBSM.PRO



Private Picture Copyright : WWW.MBSM.PRO

COMPRESOR ACC GL80AN R134 1/5,

Cubigel Compressors LBP , Hermetic, Freezing, Tb/Cooling/hmbp

Category: Technologie, Tester ok

written by www.mbsm.pro | 7 April 2020





PictureS Mbsm Dot Pro : www.mbsm.pro

Type: Hermetic piston compressors
Producer: ACC

Series: HMBP/tb

Model: GL80AN

General data

Refrigerant: R134a
Discharge element: C
Cooling: S
Maximum ambient temperature [°C]: 43

Compressor's data

Cylinder capacity [cm³]: 8,1
Displacement [m³/h]: 1,4
Weight [kg]: 10,6
Oil charge [cm³]: 445
Oil type: ISO VG 19 ESTER

Engine's data

Engine type: RSIR
Power [KM]: 1/5
Starting element: LST
Power supply: 220V 50Hz
Voltage range: 170-242
Locked rotor current [A]: 18
Running winding resistance (25°C) [Ω]: 5,81
Starting winding resistance (25°C) [Ω]: 11,01

Electrical data

Relays: 3003
Shielding element: MRP321LZ, T0683, AF11FI
Starting capacitor volume [μF]:

Connections

	milimeters	inches
Suction tube:	6,5	
Service tube:	6,5	
Discharge tube:	4,9	

GL80AN (1)Download

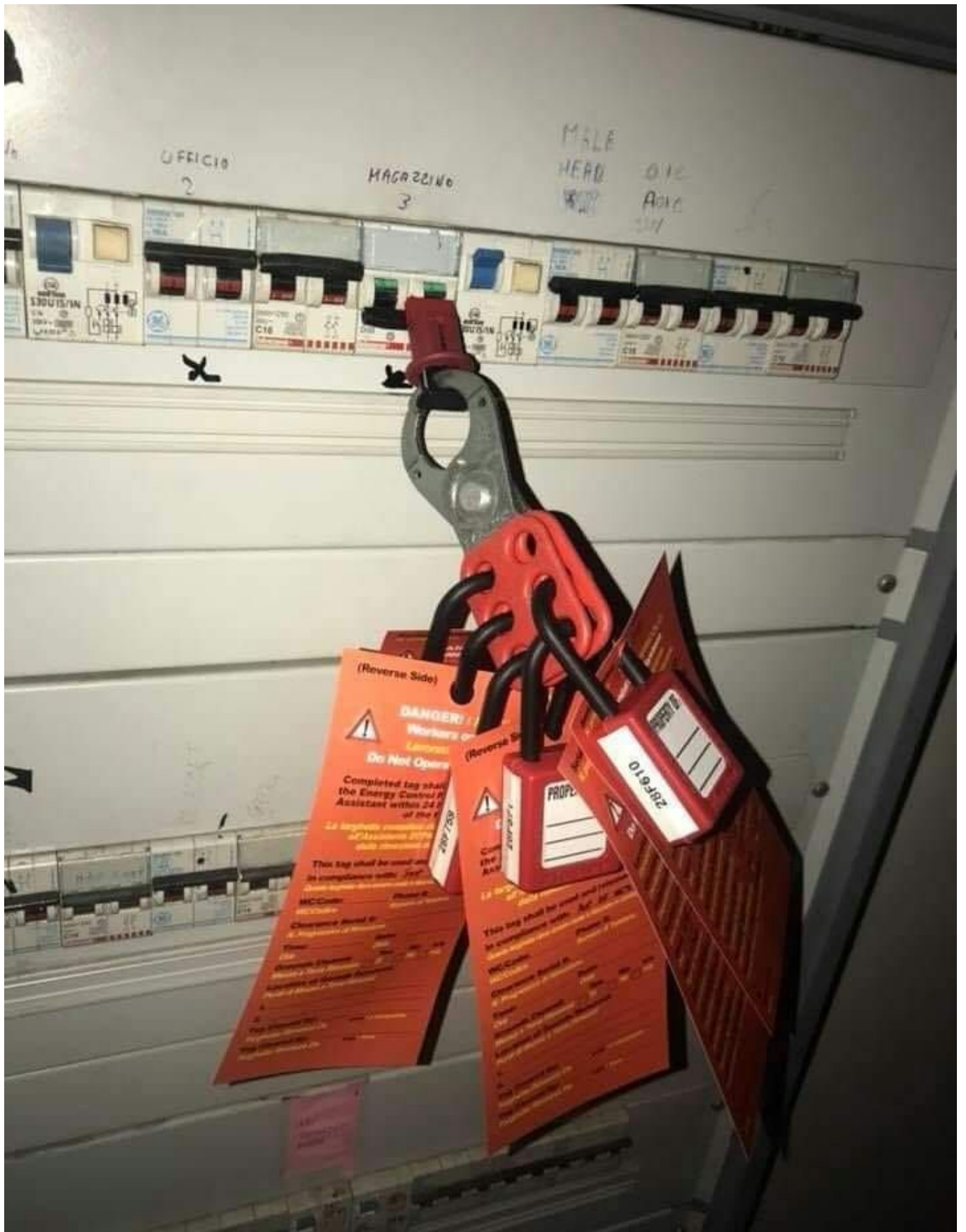
Lockout , تأمين الأجهزة , Mbsm.pro المعدات الكهربائية , نظام Tagout , السلامة المهنية

Category: Arabe, Développement, Technologie

written by www.mbsm.pro | 7 April 2020



Mbsm Dot Pro : www.mbsm.pro





Mbsm Dot Pro : www.mbsm.pro

غلق بمشبك قابل للطي ، مما يسمح لسلسلة أقفال لقفل جهاز واحد أو القفل والعلامة هو إجراء أمان يستخدم في إعدادات الصناعة والبحث للتأكد من أن الآلات الخطرة مغلقة بشكل صحيح ولا يمكن تشغيلها مرة أخرى قبل الانتهاء من أعمال الصيانة أو الإصلاح. يتطلب الأمر عزل " مصادر الطاقة الخطرة " وجعلها غير صالحة للعمل قبل بدء العمل في المعدات المعنية. يتم بعد ذلك قفل مصادر الطاقة المعزولة ووضع علامة على القفل تحدد العامل الذي وضعه. عندها يمسك العامل بمفتاح القفل ، مما يضمن أنه فقط هو أو هي قادر على إزالة القفل وبدء تشغيل الجهاز. هذا يمنع بدء التشغيل العرضي لجهاز ما عندما يكون في حالة خطرة أو عندما يكون العامل على اتصال مباشر به. ^{1]}

في مختلف الصناعات كوسيلة آمنة للعمل على المعدات الخطرة Lockout-tagout يستخدم ويفوضه القانون في بعض البلدان.

mbsm.pro , Compresseur Aspera ,
Embraco ,NEK2168GK , R404a/R507 , LBP
,3/4 HP,nominal output: 707 W

Category: Technologie,Tester ok
written by www.mbsm.pro | 7 April 2020



PictureS Mbsm Dot Pro : www.mbsm.pro

EMBRACO is a company specialized in cooling solutions and world leader in the hermetic compressor market. Our mission: provide innovative solutions for a better quality of life, always attentive to technological excellence and sustainability. Technological leadership, operational excellence and sustainability are some of the pillars which ensure the EMBRACO differential over other companies in the world market. Its products are now considered the favorite leading home appliance manufacturers by major automakers and are spotlighted by manufacturers of commercial refrigeration equipment. With global operations and production capacity exceeding 34 million units a year, the company offers solutions that are differentiated for their innovation and low energy consumption. Its 11.500 employees work in factories and offices located in Brazil (headquarters), China, Italy, Slovakia, Mexico, the United States and Russia. Energy efficiency is constantly sought in the processes, products and relationships with the communities where it operates. Our company is the absolute leader in this segment, being able to offer products that meet the most restrictive international standards regarding energy consumption.

As a worldwide leader, EMBRACO tries to anticipate market changes, and in doing so, our company is in a state of permanent transformation. We continuously assess our processes in order to maintain our leadership within the industry and promote growth, without forgetting the pillars of our organization.

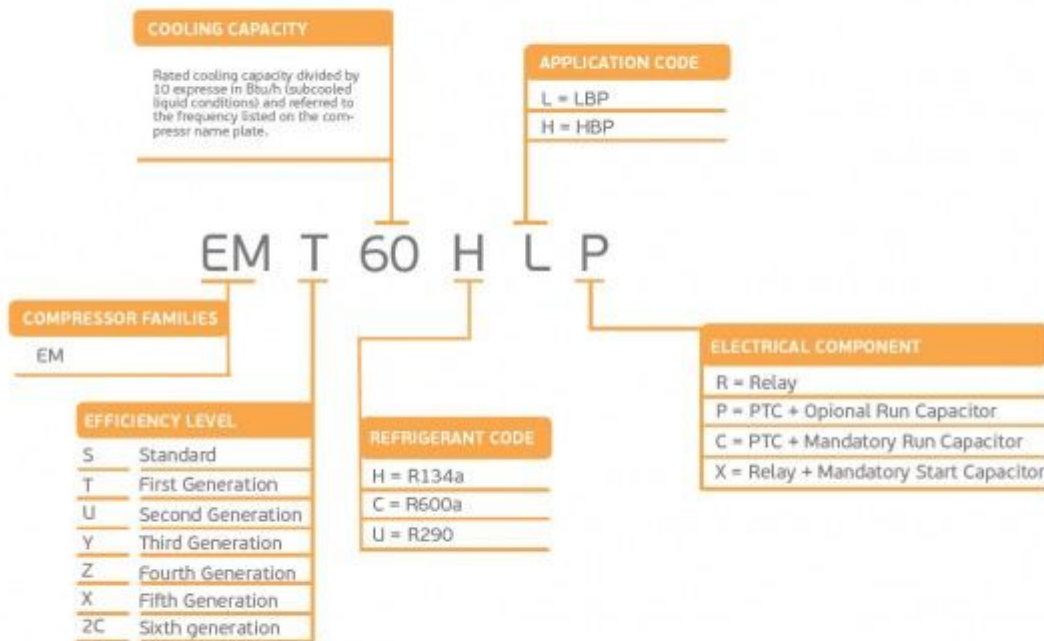
Compressor ASPERA NEK2168GK | NEK 2168 GK

Refrigerant	R404/R507
Working range[stC] LBP	-40 to -10
Nominal capacity [W] (evaporating temperature -23,3C, Condensing temperatur +54,4C)	688
Power supply	220-240V 50Hz
Engine type	CSIR
Displacement [cm ³]	14,28
Weight [kg]	11,6
Evaporating temperature +55 C	

Evaporating Temperature	Cooling Capacity +/-5%	Power Consumption +/-5%	Current Consumption +/-5%	Gas Flow Rate +/-5%	Efficiency +/-7%			
°C	(kcal/h)	(W)	(Btu/h)	(W)	(A)	(kg/h)	(kcal/Wh)	(W/W)
-40	226	263	897	370	3,46	6,01	0,61	0,71
-35	309	359	1.224	435	3,57	8,22	0,71	0,82
-30	413	481	1.640	506	3,73	11,06	0,82	0,95
-25	541	629	2.146	584	3,95	14,52	0,93	1,08
-20	691	803	2.740	668	4,21	18,64	1,03	1,20
-15	863	1.004	3.424	759	4,53	23,43	1,14	1,32
-10	1.058	1.230	4.197	856	4,90	28,92	1,24	1,44

Refrigerant: R404A, R507

		R404A / R507							
		LBP	VOLT. FREQ.	COOL. CAP. [W]	DISPL. [cc]	MBP	VOLT. FREQ.	COOL. CAP. [W]	DISPL. [cc]
NE NEK	NEK2117GK	A	125	4,51	NEK6144GK	A	550	4,51	
	NEK2121GK	A	151	5,44	NEK6165GK	A	743	6,20	
	NEK2125GK	A	182	6,20	NEK6181GK	A	841	7,28	
	NEK2130GK	A	213	7,37	NEK6210GK	A / N	1.005	8,77	
	NEK2134GK	A / N	248	8,77	NEK6213GK	A	1.337	12,11	
	NEK2150GK	A	329	12,11	NEK6217GK	A / N	1.164	14,28	
	NEK2168GK	A	378	14,28					
	NEK2172GK	C	819	16,80					



embraco **NEK**



R404A **LBP**

PictureS Mbsm Dot Pro : www.mbsm.pro



Picture5 Mbsm Dot Pro : www.mbsm.pro

mbsm.pro , Compresseur Aspera , Embraco NEK2168GK , R404A , LBP ,3/4 HP
Compresseur hermetique de Aspera – Embraco NEK2168GK – R404A
3/4 HP
220-240V 50 Hz
Cylindrée = 14.3 CM3
APPLICATIONS = LBP
Moteur type: CSR