

PDF : Calcul ,désenfumage ,pour immeuble

Category: Solutions

written by www.mbsm.pro | 30 April 2020



PictureS Mbsm Dot Pro : www.mbsm.pro

note de calcul désenfumage pour immeuble contient atrium

QBH57C10GPX, 1/6HP ,RSIR, Reciprocating Fixed Speed, Compressors, R134a, LBP ,PANASONIC SMALL REFRIGERATOR

Category: Solutions,Tester ok

written by www.mbsm.pro | 30 April 2020



PictureS Mbsm Dot Pro : www.mbsm.pro

QBH57C10GPX, 1/6HP ,RSIR, Reciprocating Fixed Speed, Compressors, R134a, LBP ,PANASONIC SMALL REFRIGERATOR

**LOW BACK PRESSURE ,HITACHI ,
Compressor FL1257-SR , 1/5HP , R134a
,135 W , BTU/Hr 512 ,Curcuit RSIR**

Category: Solutions,Tester ok
written by www.mbsm.pro | 30 April 2020

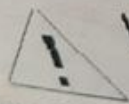
HITACHI FL1257-SD

220-240V 50Hz OIL 2006.05.13



SERIAL NO.09760

HFC-134a



WARNING

HIGH TEMPERATURE
ELECTRIC SHOCK

K12

DO NOT TOUCH



SHOT ON M6T
MEIZU

PictureS Mbsm Dot Pro : www.mbsm.pro

LOW BACK PRESSURE ,HITACHI , Compressor FL1257-SR , 1/5HP , R134a ,135 W ,
BTU/Hr 512 ,Curcuit RSIR

Notion , Ne jamais utiliser de , pâte
à joints, ni Téflon, ni filasse pour
, l'étanchéité des raccords , de
Climatisation

Category: Solutions, Tester ok
written by www.mbsm.pro | 30 April 2020



PictureS Mbsm Dot Pro : www.mbsm.pro

Notion , Ne jamais utiliser de , pâte à joints, ni Téflon, ni filasse pour , l'étanchéité des raccords , de Climatisation

Fatal and serious errors in not passing the tubes in ordinary or thermal insulators in normal plumbing or central heating

Category: Solutions

written by www.mbsm.pro | 30 April 2020







PictureS Mbsm Dot Pro : www.mbsm.pro

You need to do this





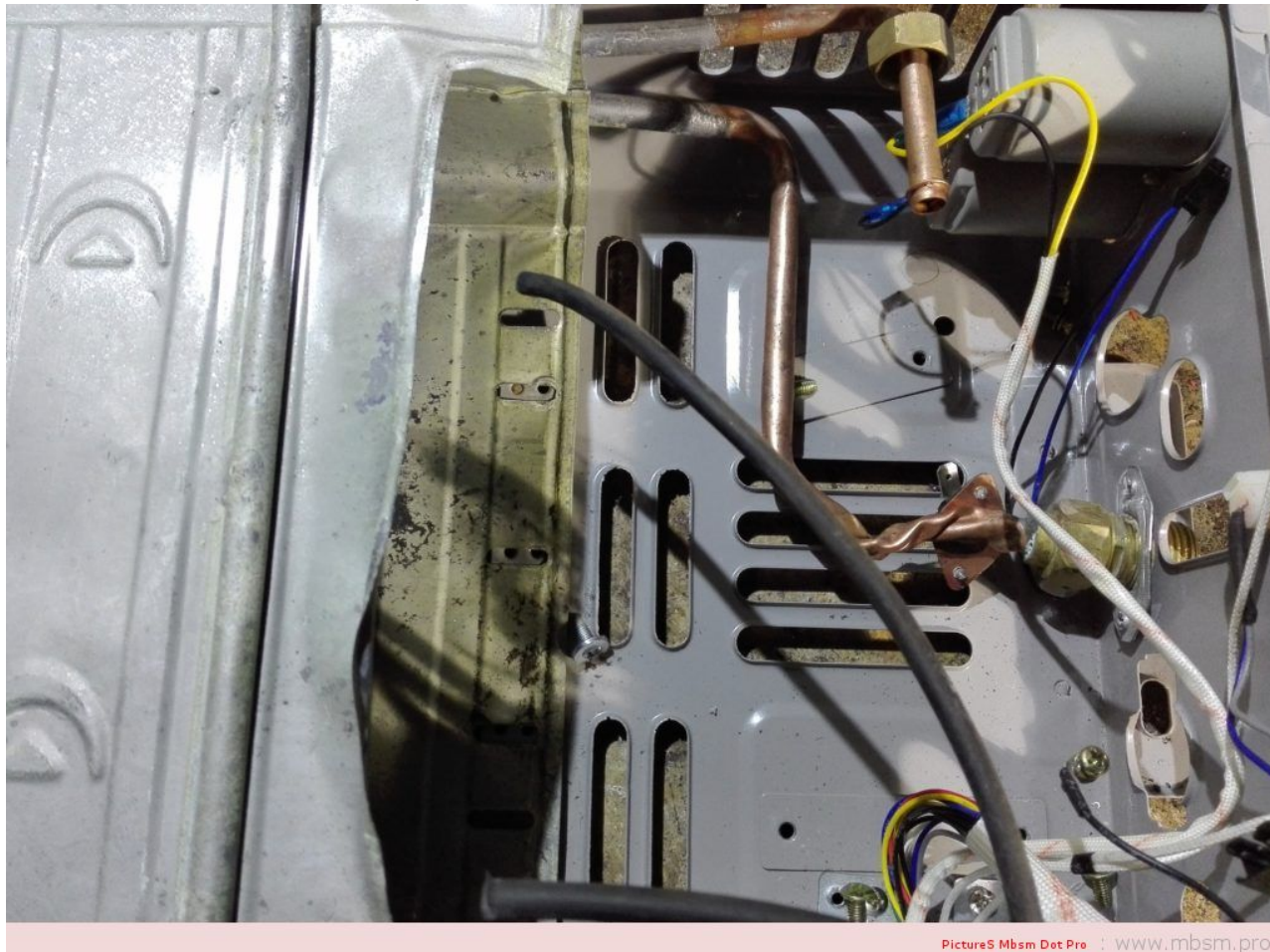
PictureS Mbsm Dot Pro : www.mbsm.pro

أخطاء فادحة وخطيرة في عدم تمرير الانابيب في عوازل عادية او حرارية في أعمال السباكة العادية او التدخين المركزي

Erreur Grave montage chauffe bain Électronique

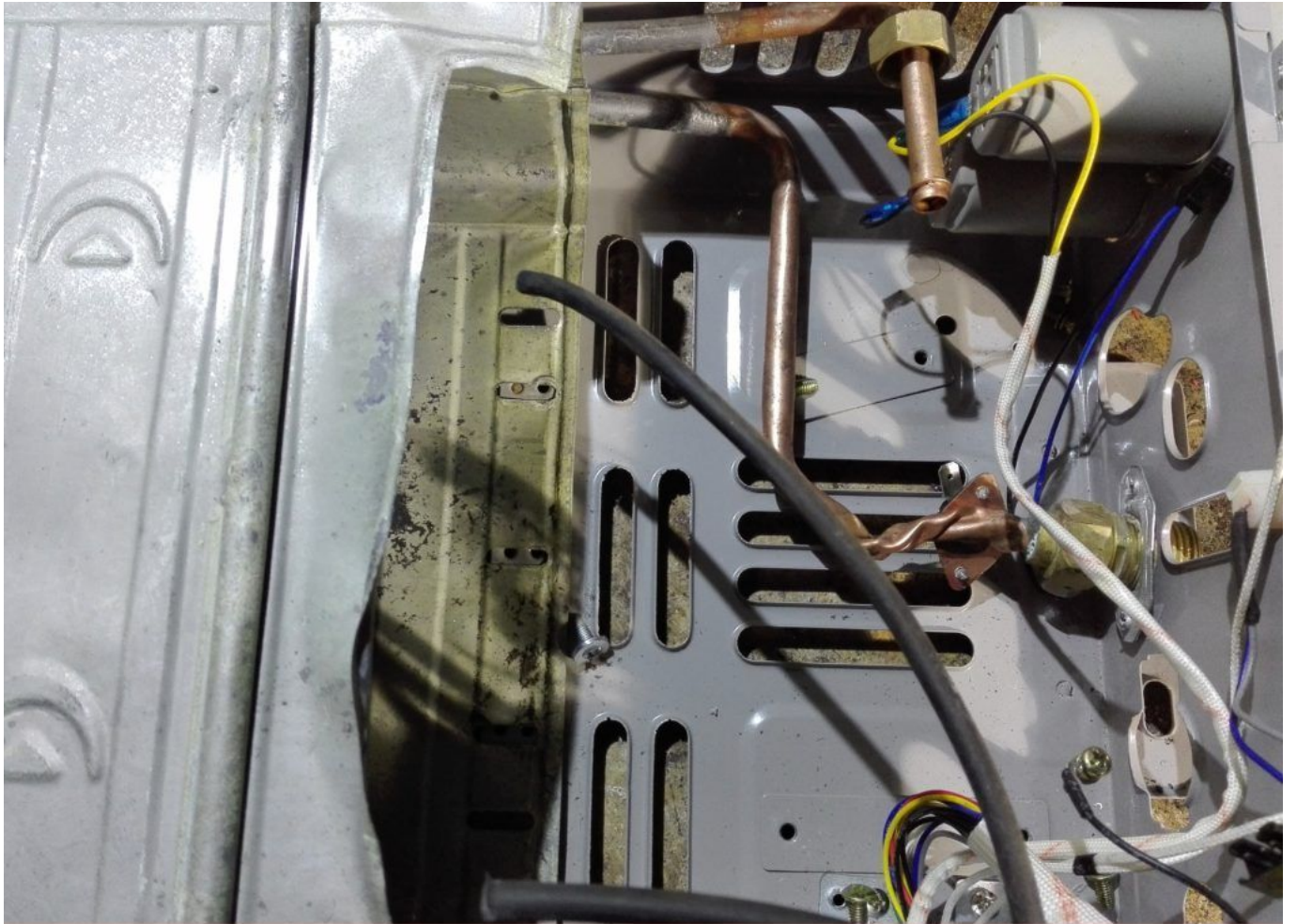
Category: Solutions

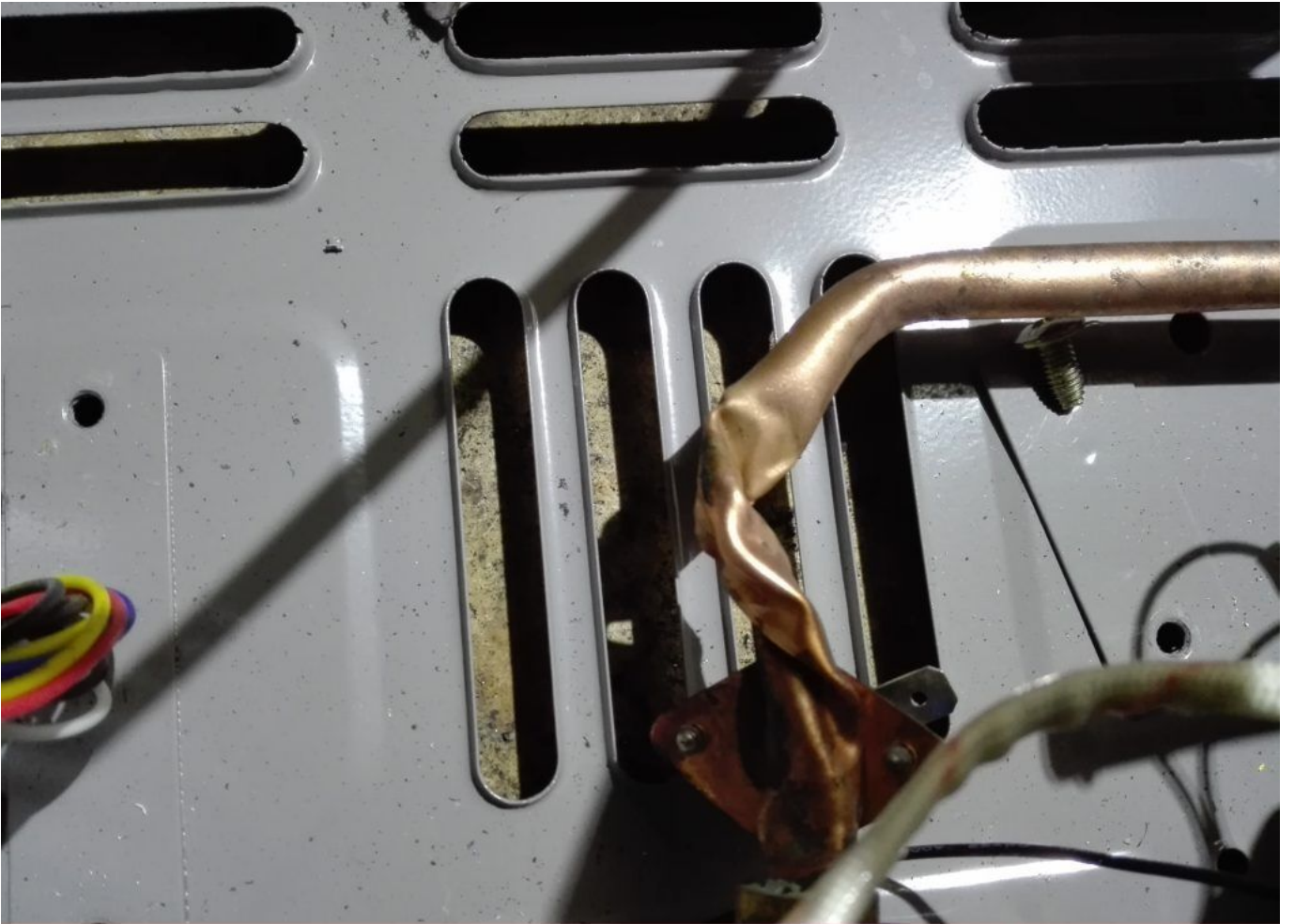
written by www.mbsm.pro | 30 April 2020

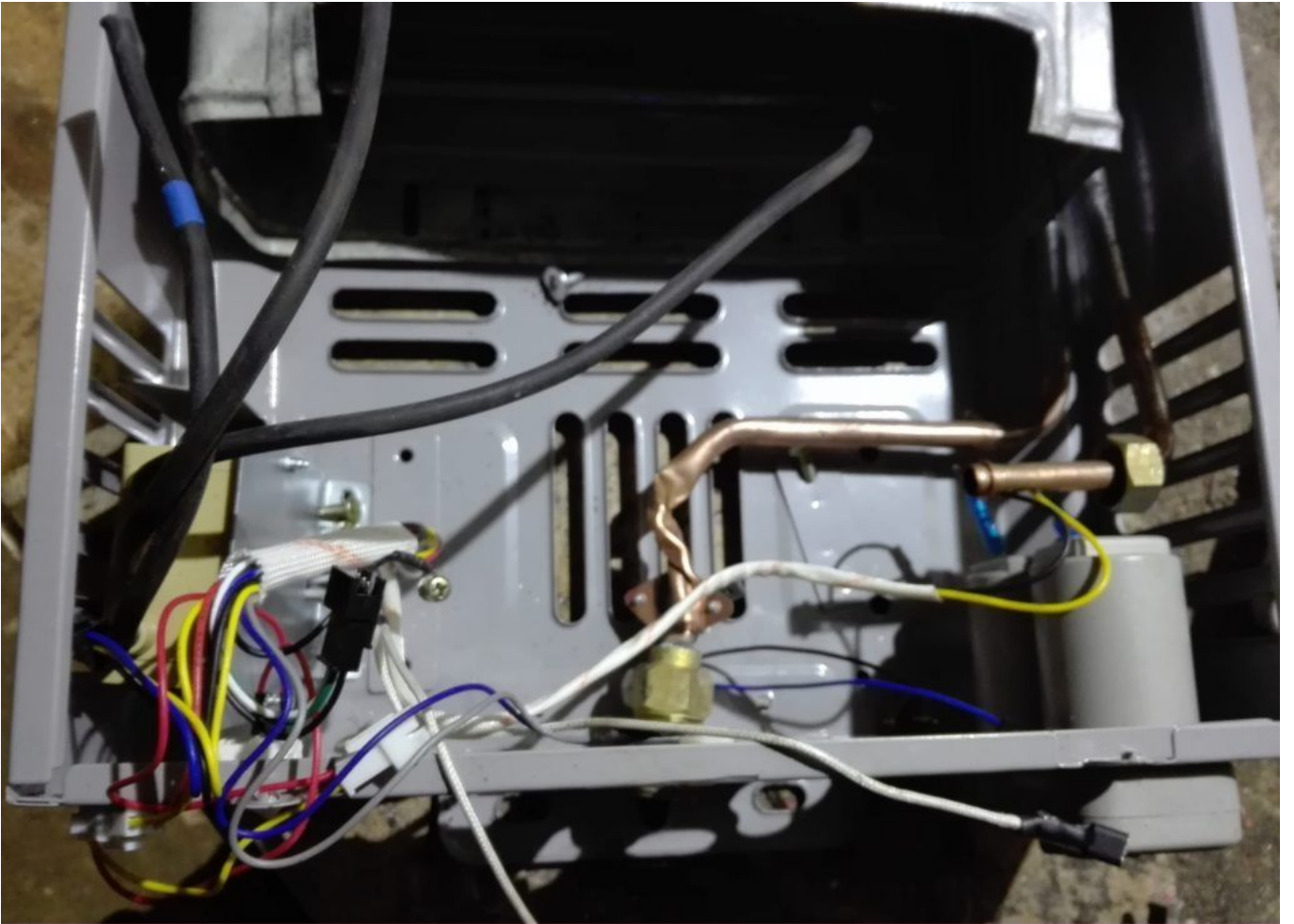


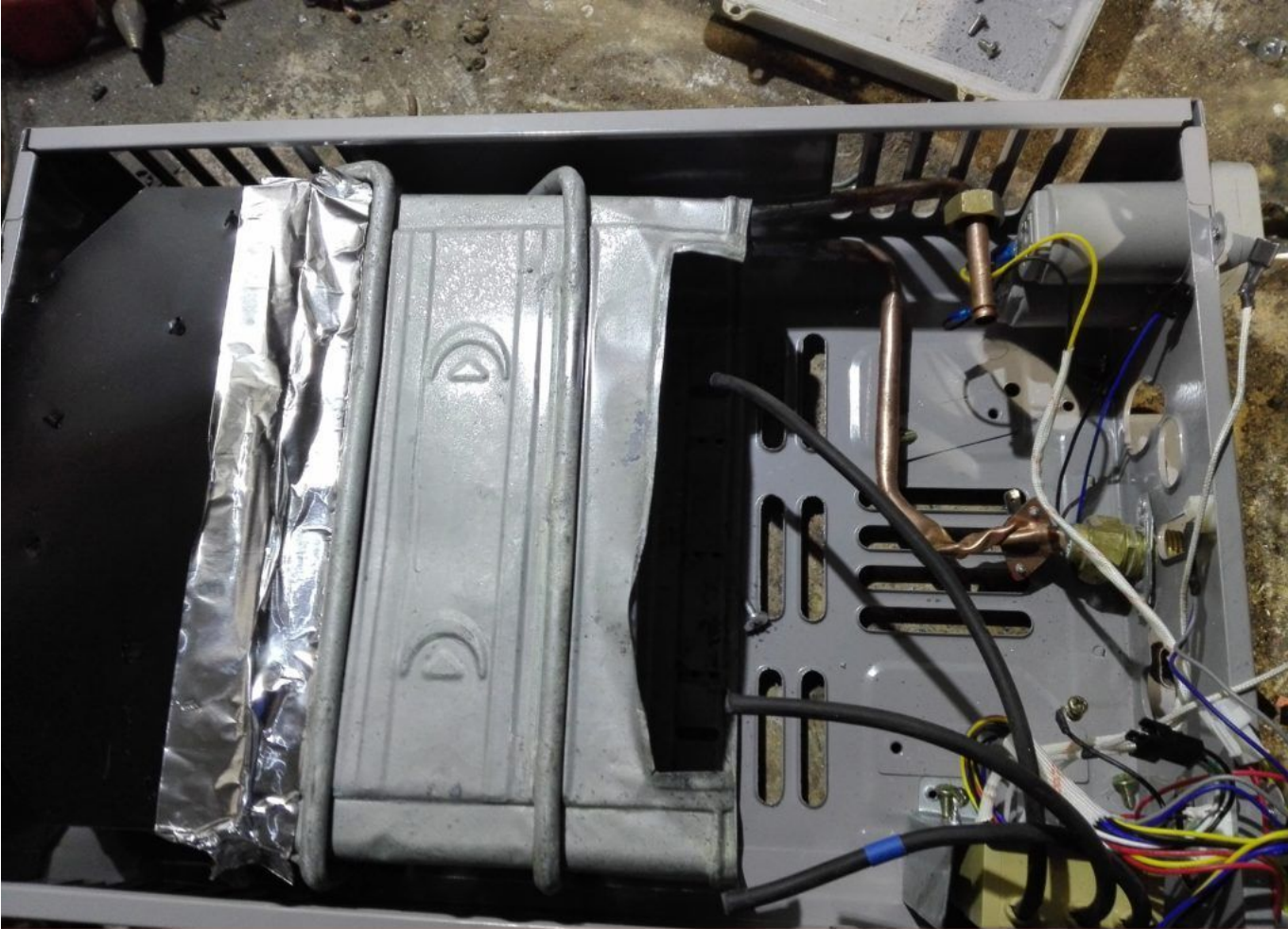
Picture5 Mbsm Dot Pro : www.mbsm.pro

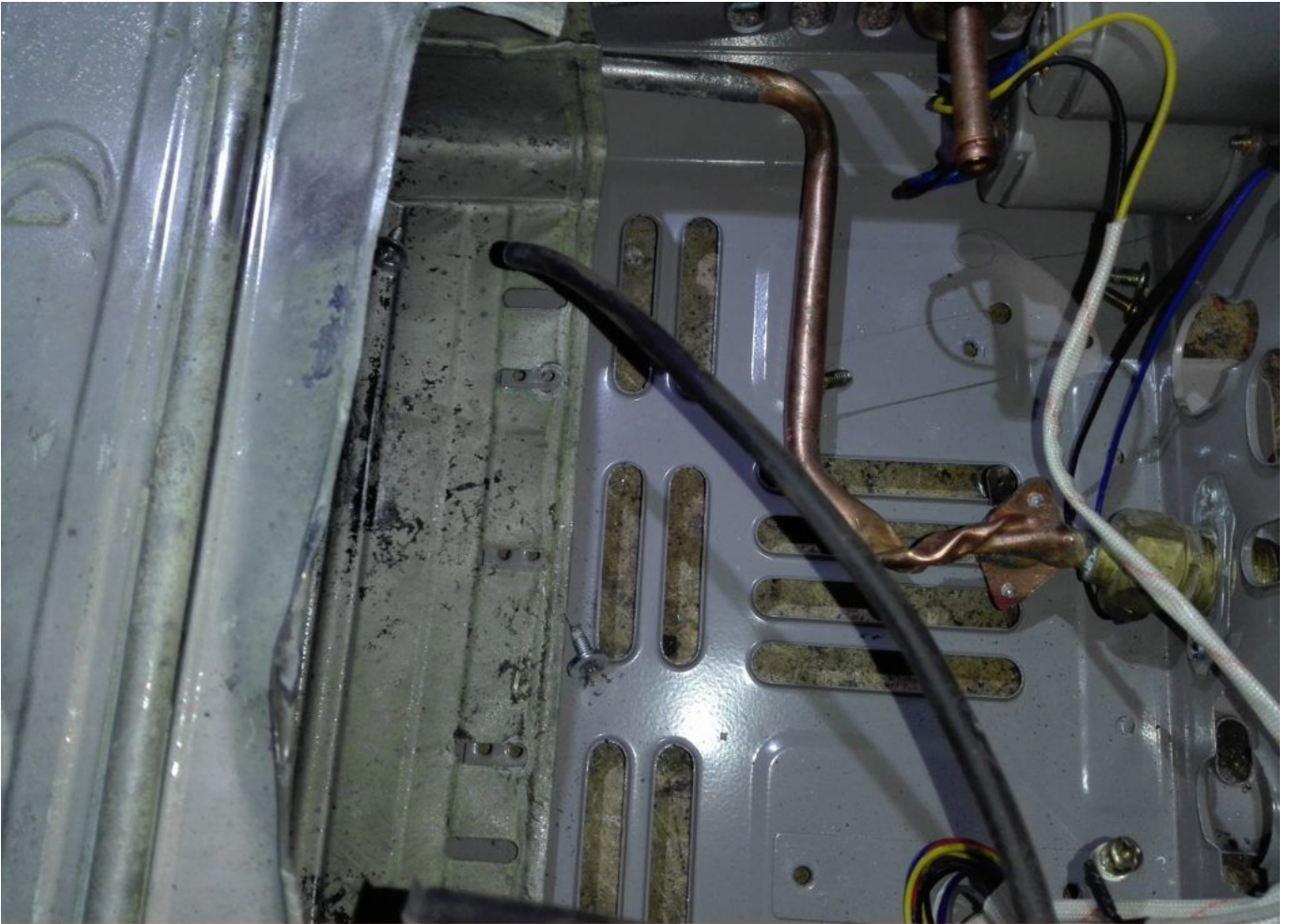
خطأ كبير في تركيب سخان الحمام
Serious bath heater mounting error

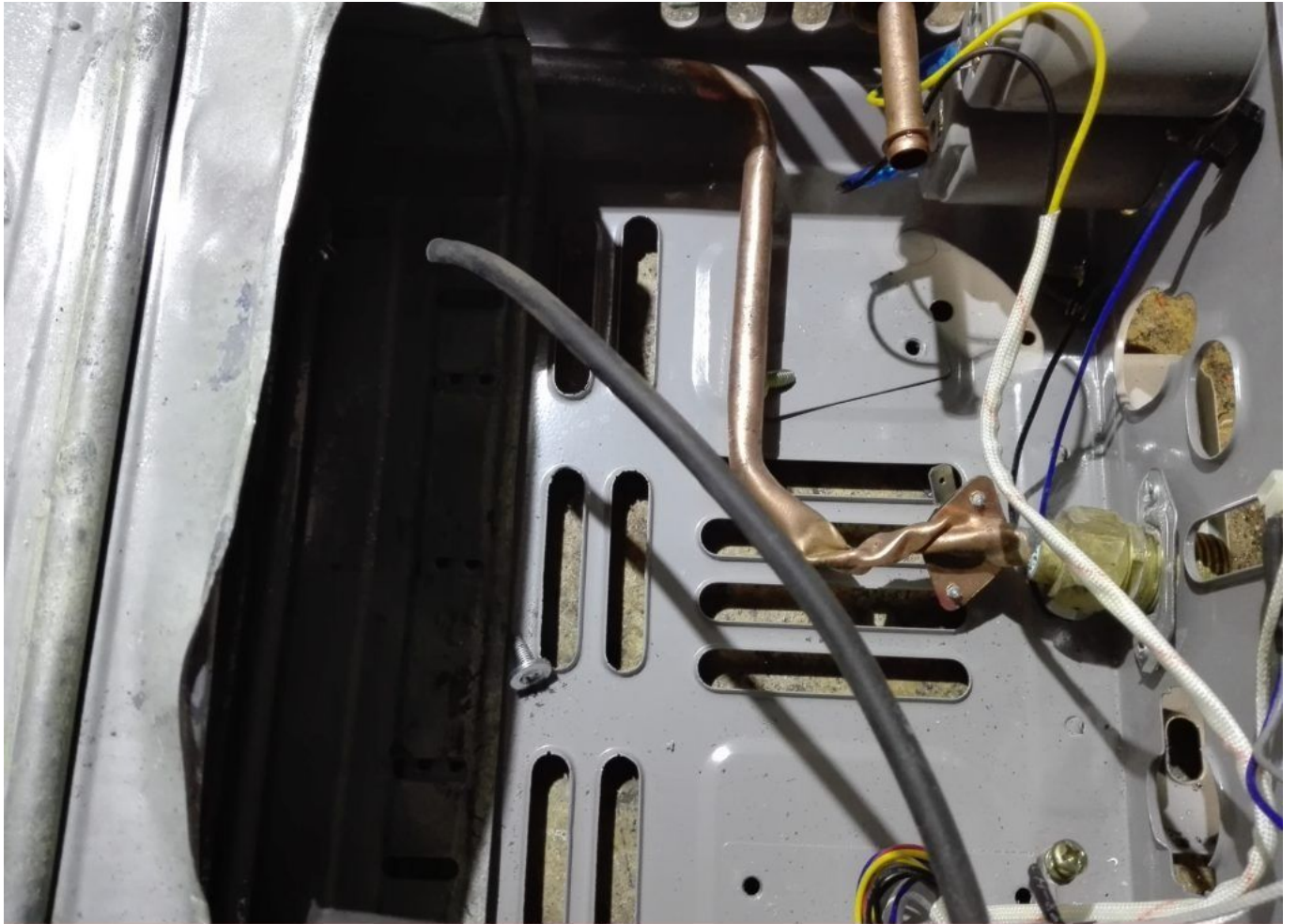




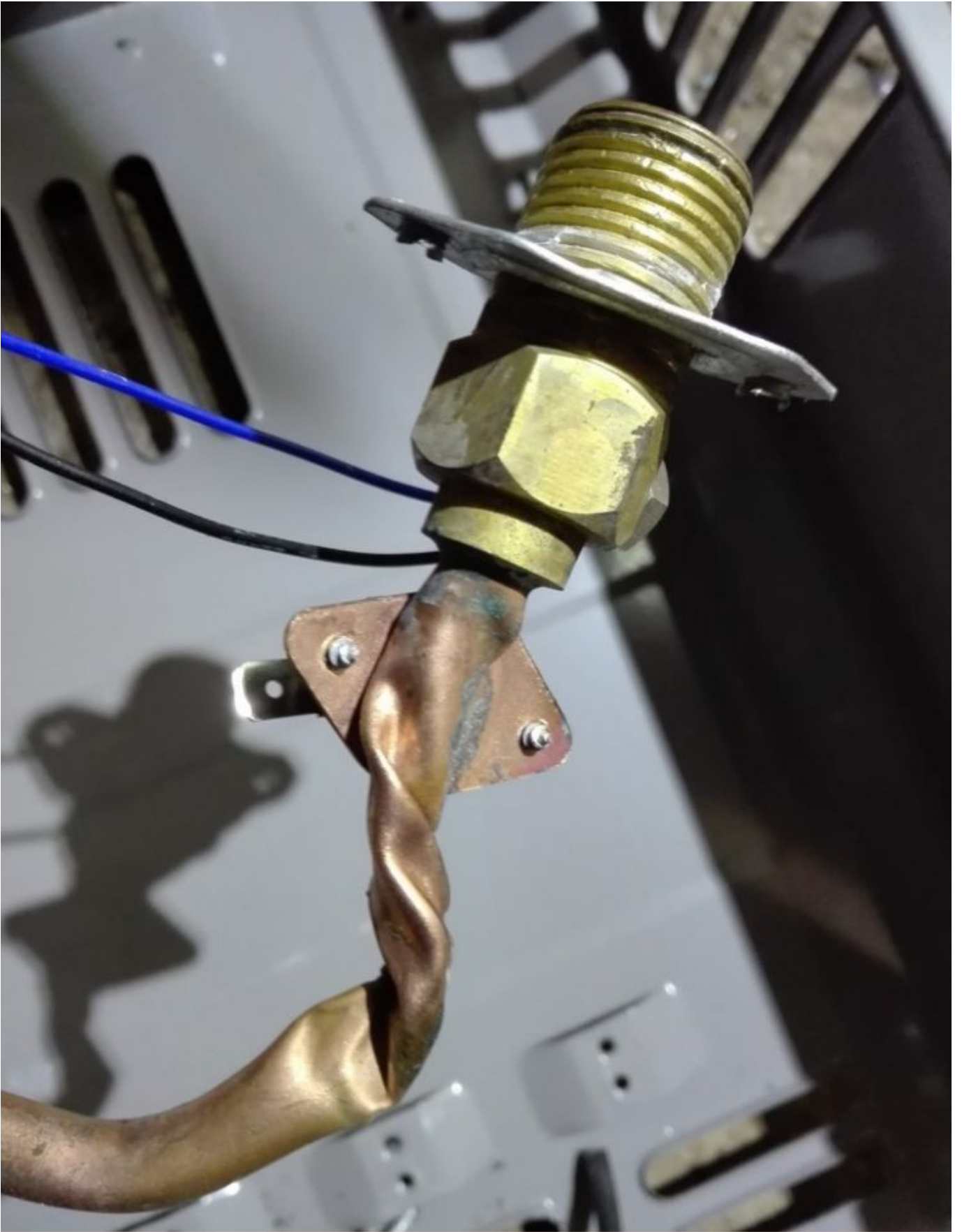


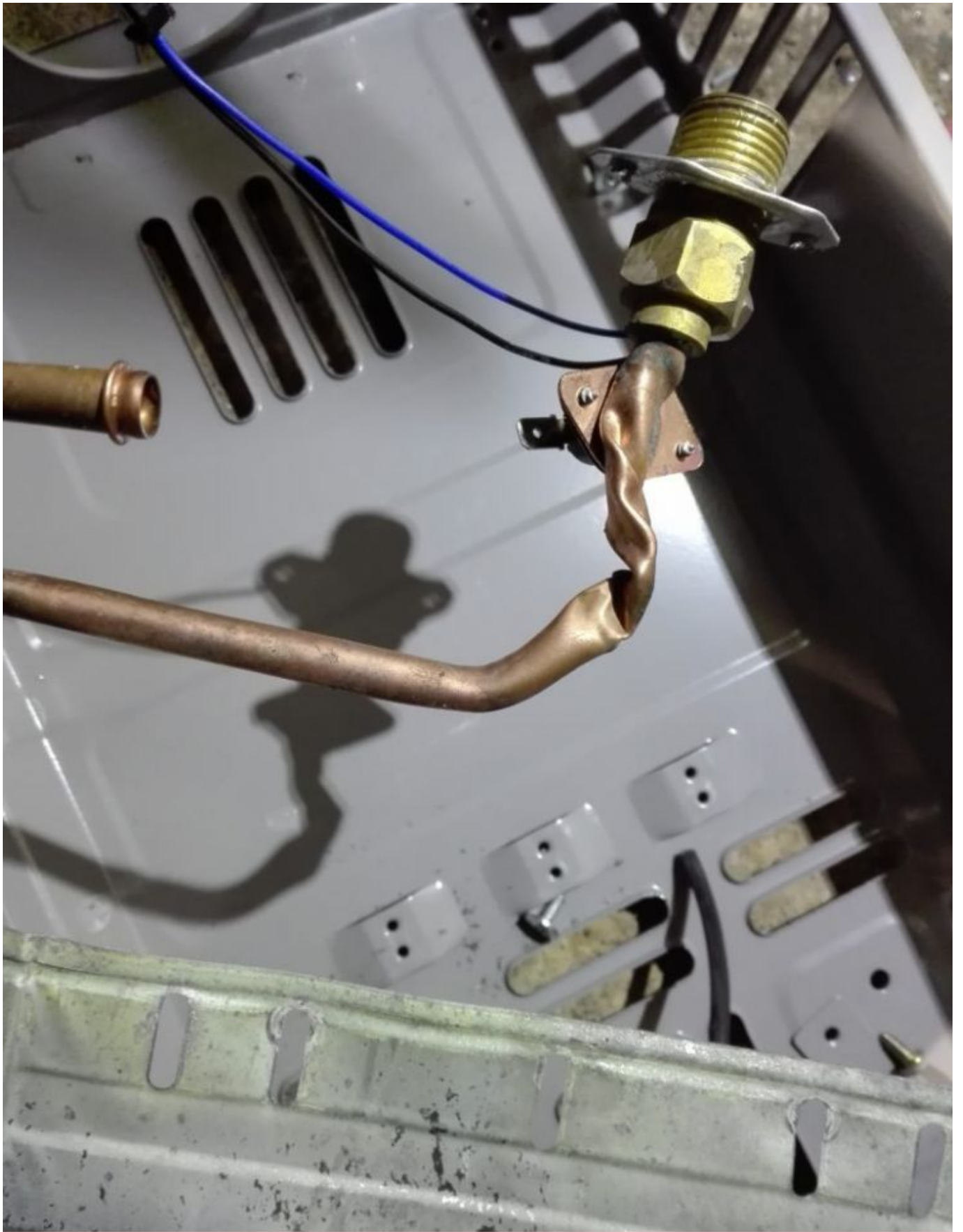












Erreur de maintenance chauffe eau solaire

Category: Solutions

written by www.mbsm.pro | 30 April 2020



PictureS Mbsm Dot Pro : www.mbsm.pro

خطأ صيانة سخان المياه بالطاقة الشمسية

Solar water heater maintenance error











Picture5 Mbsm Dot Pro : www.mbsm.pro

Erreur de montage et démontage panneau solaire

Category: Solutions

written by www.mbsm.pro | 30 April 2020



Picture5 Mbsm Dot Pro : www.mbsm.pro

Solar panel mounting and dismounting error
خطأ في تركيب الألواح الشمسية وتفكيكها













Picture5 Mbsm Dot Pro : www.mbsm.pro

جدول بأنواع الزيوت ، Mbsm.pro
المناسبة لوسائط وضواغط التبريد و
اللدوجة المناسبة لكل نوع من الضواغط
table of the types of oils suitable
for the appropriate refrigeration and
liquefied media and compressors for
each type of compressor

Category: Arabe,Solutions,Technologie,Tester ok
written by www.mbsm.pro | 30 April 2020

جدول بأنواع الزيوت المناسبة لوسائط وضواغط التبريد حسب اللدوجة

A	B	C	D	E	F	G	H	I	J	K	L
وسيط التبريد		Ramçoo	درجة حرارة البخار		مؤهل الضاغط. ونوع الزيت بجانبه قيمة اللدوجة ISO VG						
تسمية ASHRAE	الصفة	الخطأ	من (°C)	إلى (°C)	Piston	بستوني	Scrws	سكرو	سكرو	سكرو	طرد مركزي
R12	CFC		-40	40+	MN 32			MN 68	PAO 400		MN 68
R502	CFC		-50	20-	MN 32	AB 32		MN 68	AB 100		MN 68
R22	HCFC		-25	10+	MN 32	AB 32	PAO 68	MN 68	AB 100		MN 68
R22	HCFC		-30	10+		AB 32	PAO 68		AB 100		MN 68
R22	HCFC		-40	10+		AB 32			AB 100		MN 68
R22	HCFC		-50	10+		AB 32			AB 68		
R123	HCFC	R11	0	20+							
R124	HCFC	R114	0	80+	MN 68			AB 100			
R401a	HCFC	R12	-20	10+	MN 32	AB 32					
R402a	HCFC	R502	-50	30-	AB 32						
R408a	HCFC	R502	-50	30-	AB 32			AB 100			
R409a	HCFC	R12	-20	10+	MN 32	AB 32					
R290	C3H8(propane)		-30	20+	MN 68			PG 150			PG 150
R600/R600a	Butane /Iso But		-30	20+	MN 68			PG 150			PG 150
R717	NH3(ammonia)		-30	10+	MN 68	AB 32	PAO/AB 68	MN 68	PAO 68	PAO/AB 68	MN 68
R717	NH3(ammonia)		-50	10+		AB 32	PAO/AB 68		PAO 68	PAO/AB 68	MN 68
R744	CO2		-55	10-							
R23	HFC		-100	40-	POE 22						
R134a	HFC	R12	-20	10+	POE 22			POE 220			POE 68
R134a	HFC	R12	-30	10+	POE 22			POE100			POE 68
R404a	HFC	R502	-40	30-	POE 22			POE 220			POE 68
R404a	HFC	R502	-50	30-	POE 22			POE100			POE 68
R407C	HFC	R22	0	10+	POE 68			POE 220			
R410a	HFC		-45	10+	POE 22			POE100			POE 68
R410a	HFC		-25	10+	POE 32			POE 220			POE 68
R410b	HFC		-25	10+	POE 22			POE 220			POE 68
R417a	HFC	R22	-15	15+	POE 68			POE 220			POE 68
R422a	HFC	R22	-45	5-	POE 22			POE100			POE 68
R422a	HFC	R22	-25	5-	POE 32			POE 220			POE 68
R422d	HFC	R22	-45	10+	POE 22			POE100			POE 68
R422d	HFC	R22	-25	10+	POE 32			POE 220			POE 68
R427a	HFC	R22	-40	10+	POE 22			POE100			POE 68
R427a	HFC	R22	-20	10+	PAO 400			POE 220			POE 68
R507/507a	HFC		-40	0	POE 22			POE100			POE 68

PictureS Mbsm Dot Pro : www.mbsm.pro

Table of oil types suitable for appropriate refrigeration and liquefied media and compressors for each type of compressor

PAO (Polyalphaolefin) Polyamphalene oil

MN (Mineral Naphthenic) Oil

AB (Alkylbenzene) Petrol oil

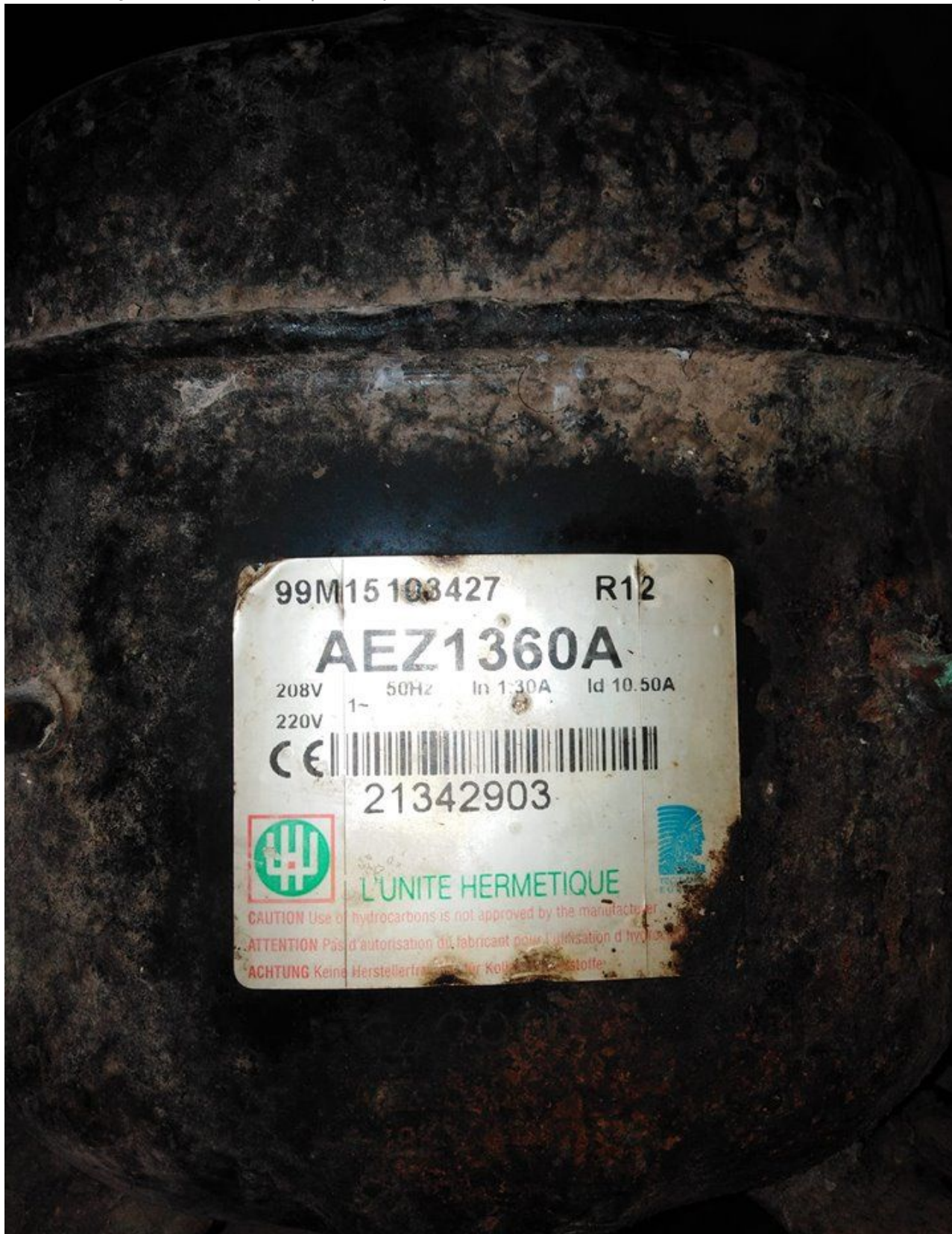
POE (Polyol Ester) Polyethylene oil

PG (Polyglycol) Polyglycol

www.mbsm.pro, AEZ1360A, Kirby, Tecumseh, Compressors ,low back, pressure, models, 240v/50HT , 1PH ,

1/5Hp , Gaz 12A

Category: Solutions,Technologie,Tester ok
written by www.mbsm.pro | 30 April 2020



Picture5 Mbsm Dot Pro : www.mbsm.pro

Points forts : Compresseur aez1360a pour réfrigérateur fagor FAGOR
MA-10CA562COMP-QZQAZ