

Compressor, Matsushita, D77C18RAX5, 1/4 hp, Panasonic

Category: Refrigeration

written by www.mbsm.pro | 18 January 2026



Picture5 Mbsm Dot Pro : www.mbsm.pro

The Matsushita D77C18RAX5 is a legendary 1/4 HP refrigerator compressor optimized for R134a refrigerant. Known for its robust RSIR motor and 7.7cc displacement, it delivers 195W of cooling power for domestic freezers and refrigerators. This guide provides full technical data, wiring details, and the best professional cross-reference replacements for modern refrigeration repair.

Huayi HYE69Y63 Compressor 1/5 HP R134a LBP

Category: Refrigeration

written by www.mbsm.pro | 18 January 2026



Private Picture Copyright : WWW.MBSM.PRO

The Huayi HYE69Y63 is a highly efficient hermetic reciprocating compressor designed for low back pressure applications using R134a refrigerant. With a 1/5 HP rating and dual-frequency compatibility (50/60Hz), this motor is a cornerstone for domestic refrigerators and freezers. This comprehensive guide covers technical datasheets, electrical wiring, and professional replacement strategies for global cooling systems.

Huayi HYB60MGU Compressor 1/7 HP R600a LBP

Category: Refrigeration

written by www.mbsm.pro | 18 January 2026



Private Picture Copyright : WWW.MBSM.PRO

The Huayi HYB60MGU is a high-efficiency hermetic reciprocating compressor specifically engineered for Low Back Pressure (LBP) applications. Operating on the eco-friendly R600a refrigerant, this 1/7 HP unit is a primary component in modern household refrigerators. This guide provides an in-depth technical analysis, electrical wiring configurations, and reliable replacement alternatives for field engineers.

GMCC PE75H1C Compressor 1/4 HP R134a LBP

Category: Refrigeration

written by www.mbsm.pro | 18 January 2026



Private Picture Copyright : WWW.MBSM.PRO

The GMCC PE75H1C is a robust hermetic reciprocating compressor engineered for low back pressure applications using R134a refrigerant. Operating at 220-240V 50Hz, this 1/4 HP motor provides a cooling capacity of approximately 185W. This article provides technical datasheets, electrical wiring schemas, and professional cross-reference guides for global refrigeration maintenance and engineering.

TEE NTU 170 MT Compressor 1/4 HP R600a

Category: Refrigeration

written by www.mbsm.pro | 18 January 2026



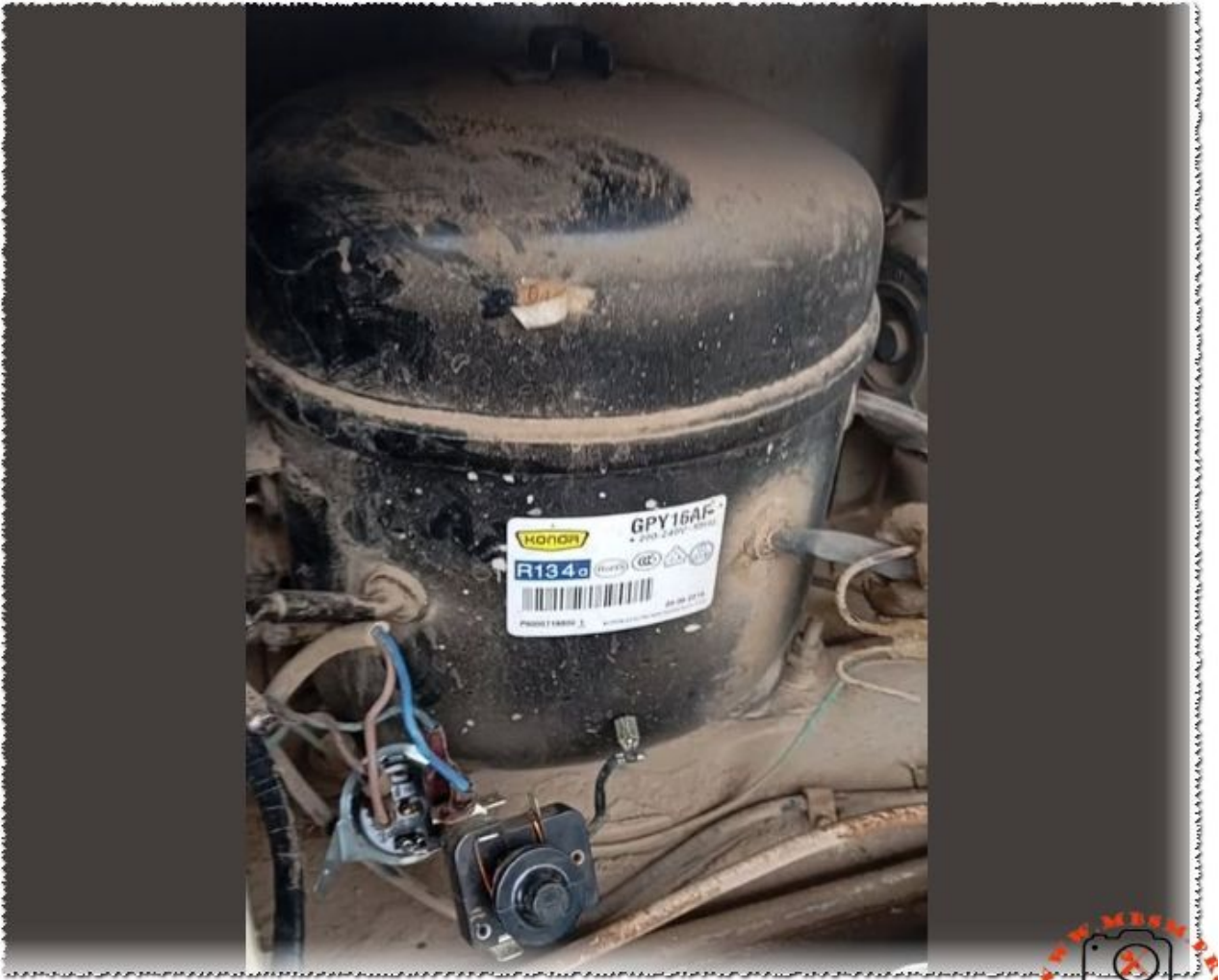
Private Picture Copyright : WWW.MBSM.PRO

The TEE NTU 170 MT is a high-efficiency hermetic reciprocating compressor designed for low back pressure applications using R600a refrigerant. Known for its reliability in household refrigeration, this unit operates at 220-240V 50Hz. This article explores its technical specs, cooling capacity, and suitable replacements for HVAC technicians and engineers worldwide.

Compressor, Konor, GPY16AF, 1/2 HP, R134a, LBP

Category: Refrigeration

written by www.mbsm.pro | 18 January 2026



Private Picture Copyright : WWW.MBSM.PRO

The Konor GPY16AF is a robust hermetic reciprocating compressor engineered for low back pressure applications using R134a refrigerant. With a displacement of 16.2 cm³, this 1/2 HP unit is a staple in commercial freezers and large refrigerators. This guide provides detailed technical data, wiring diagrams, and professional cross-reference options for field technicians.

STC-9200 Temperature Controller

Category: Refrigeration

written by www.mbsm.pro | 18 January 2026



Private Picture Copyright : WWW.MBSM.PRO

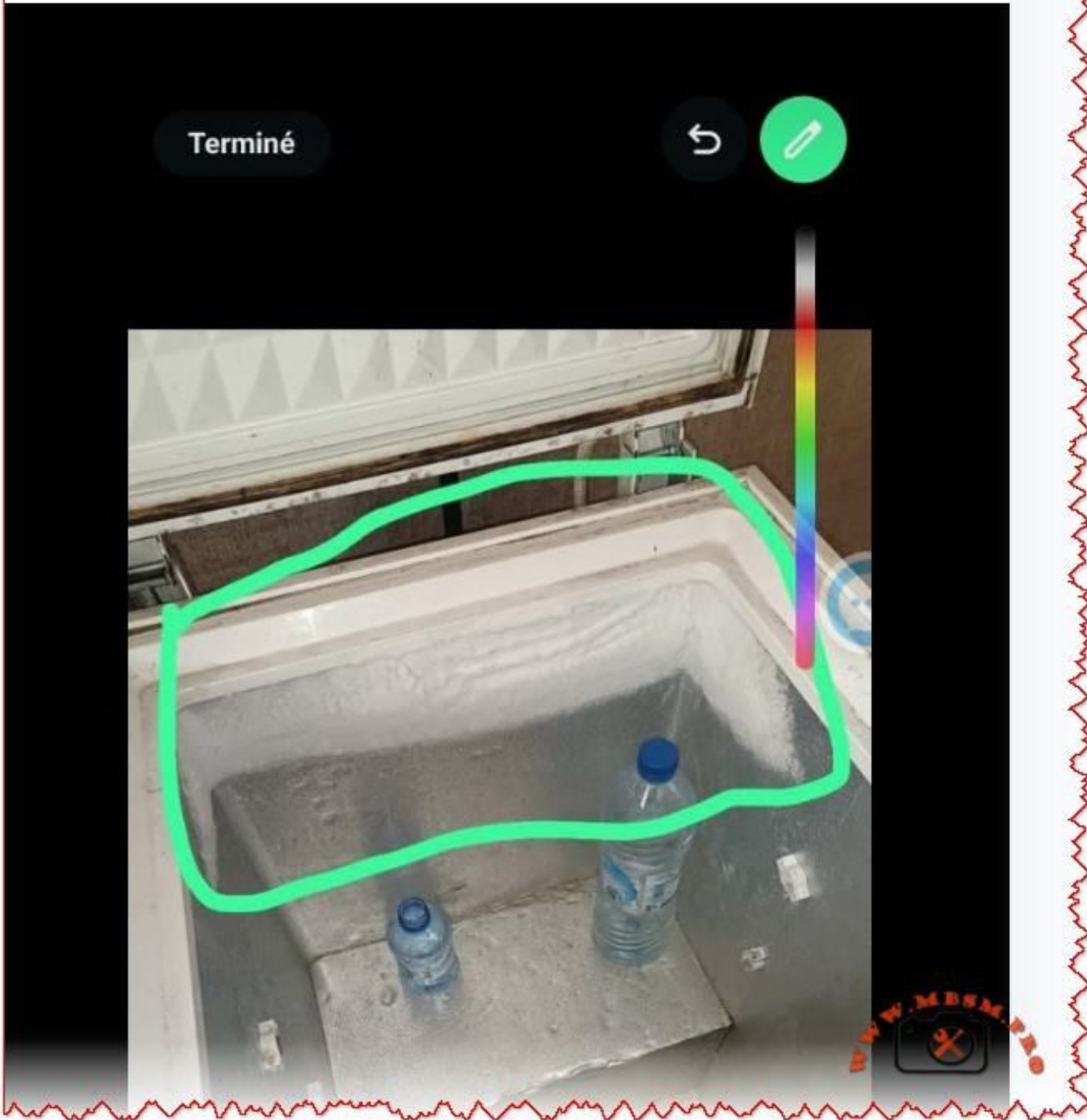
“The STC-9200 digital temperature controller is a professional-grade thermostat designed for industrial refrigeration and freezing applications. This advanced multi-stage controller features precise temperature regulation from -50°C to +50°C, integrated defrost management, and robust relay capacity for compressor control, making it ideal for commercial cooling systems and display cases.”

The 5 Pillars of Refrigeration Diagnosis: Professional HVAC

Category: Refrigeration

written by www.mbsm.pro | 18 January 2026

Where is the problem?



Private Picture Copyright : WWW.MBSM.PRO

Professional HVAC technicians rely on five critical diagnostic pillars: suction pressure, discharge pressure, superheat, subcooling, and saturation temperature relationships. Mastering these five measurements eliminates guesswork, accurately identifies refrigeration problems, and ensures proper system troubleshooting without expensive callbacks or equipment damage.

SECOP SC21G COMPRESSOR

Category: Refrigeration

written by www.mbsm.pro | 18 January 2026



Private Picture Copyright : WWW.MBSM.PRO

Secop SC21G is a high-performance hermetic reciprocating compressor designed for commercial refrigeration and freezing applications using R134a refrigerant. This guide covers detailed specifications, technical parameters, and installation requirements for 220-240V/50Hz systems at up to 1.3 amperes.

Samsung MSE4A1Q-L1G AK1, hermetic reciprocating refrigerator compressor

Category: Refrigeration

written by www.mbsm.pro | 18 January 2026



Private Picture Copyright : WWW.MBSM.PRO

The Samsung MSE4A1Q-L1G AK1 is a hermetic reciprocating refrigerator compressor designed for domestic LBP applications with R600a refrigerant and a nominal cooling capacity around 175–180 W at ASHRAE conditions, equivalent to roughly 1/4 hp. Engineers value this model for its efficient RSCR motor and robust design. □