

Mbsm.pro, Compressor, Delta, 1/4 hp, r12, D207w, Lbp

written by Lilianne | 28 December 2023



Mbsm.pro, Compressor, Delta, 1/4 hp, r12, D207w, Lbp

Mbsm.pro, White Point, Washing Machine, Front loading, WPW-541, 5 kgs

written by Lilianne | 28 December 2023



Private Picture Copyright : WWW.MBSM.PRO

Mbsm.pro, White Point, Washing Machine, Front loading,
WPW-541, 5 kgs

**Mbsm.pro, Compressor, Qdh79g,
1/4 Hp, 205 w, Lbp, R134a,
220v, 1 phase 50 hz, QDH79G
Refrigerator, 7.9 cm³**

written by Lilianne | 28 December 2023



Private Picture Copyright : WWW.MBSM.PRO

Mbsm.pro, Compressor, Qdh79g, 1/4 Hp, 205 w, Lbp, R134a, 220v, 1 phase 50 hz, QDH79G Refrigerator

**Refrigerator, Embraco,
Compressor, 1/4 hp,
FF17.5HAK, FF18.5HAK ,
FFU70HAK, 1/3 hp, FG95HAK,
FEU100HAK, 1/6 hp, EM65HNR,
EMI50HEP, 1/5 hp, FG65HAK,
FF165HAK, EMI70, EM20HHR,
1/12 hp, EM30HHR, 1/10 hp,
EM40HEP, EM45HNR**

written by Lilianne | 28 December 2023



Private Picture Copyright : WWW.MBSM.PRO

Refrigerator, Embraco, Compressor, 1/4 hp, FF17.5HAK, FF18.5HAK , FFUZ0HAK, 1/3 hp, FG95HAK FEU100HAK, 1/6 hp, EM65HNR, EMI50HEP, 1/5 hp, FG65HAK, FF165HAK, EMI70, EM20HHR, 1/12 hp,

EM30HHR, 1/10 hp, EM40HEP, EM45HNR,

If you need to replace a compressor in a refrigerator, you need to choose the right analogue

written by Lilianne | 28 December 2023



Private Picture Copyright : WWW.MBSM.PRO

If you need to replace a compressor in a refrigerator, you need to choose the right analogue

**Compressor, 1/10 hp, 88 w,
ZBS1111CY, JIAXIPERA, r600a**

written by Lilianne | 28 December 2023



Compressor, 1/10 hp, 88 w, ZBS1111CY, JIAXIPERA, r600a

**Deep Freezer, Crown, CR120w,
120 L, 140 W, 1.1 a, r600a,
40 g, 4.23 feet, Compressor ,
1/6 hp, Lbp, 140 w,**

written by Amina | 28 December 2023



Deep Freezer, Crown, CR120w, 120 L, 140 W, 1.1 a, r600a, 40 g,
4.23 feet, Compressor , 1/6 hp, Lbp, 140 w,

**Mitsubishi, Electric, fixed
frequency, NH41VNHT 2.55HP,
single-phase, 220V, rotary,
air condition, 26000 btu/h**

written by Amina | 28 December 2023



SIAM COMPRESSOR INDUSTRY



MITSUBISHI ELECTRIC CO., LTD.

REFRIGERANT COMPRESSOR
MODEL **NH41VNHT**

MANUFACTURING DATE **16092010**

POWER SOURCE

220-240V 1~ 50Hz

POWER INPUT **2410 W** AT **50** **Hz**

LRA **70/77** **A**

REFRIGERANT **R-22**

OIL **1.30 L**

AP **2.74** **MPa**

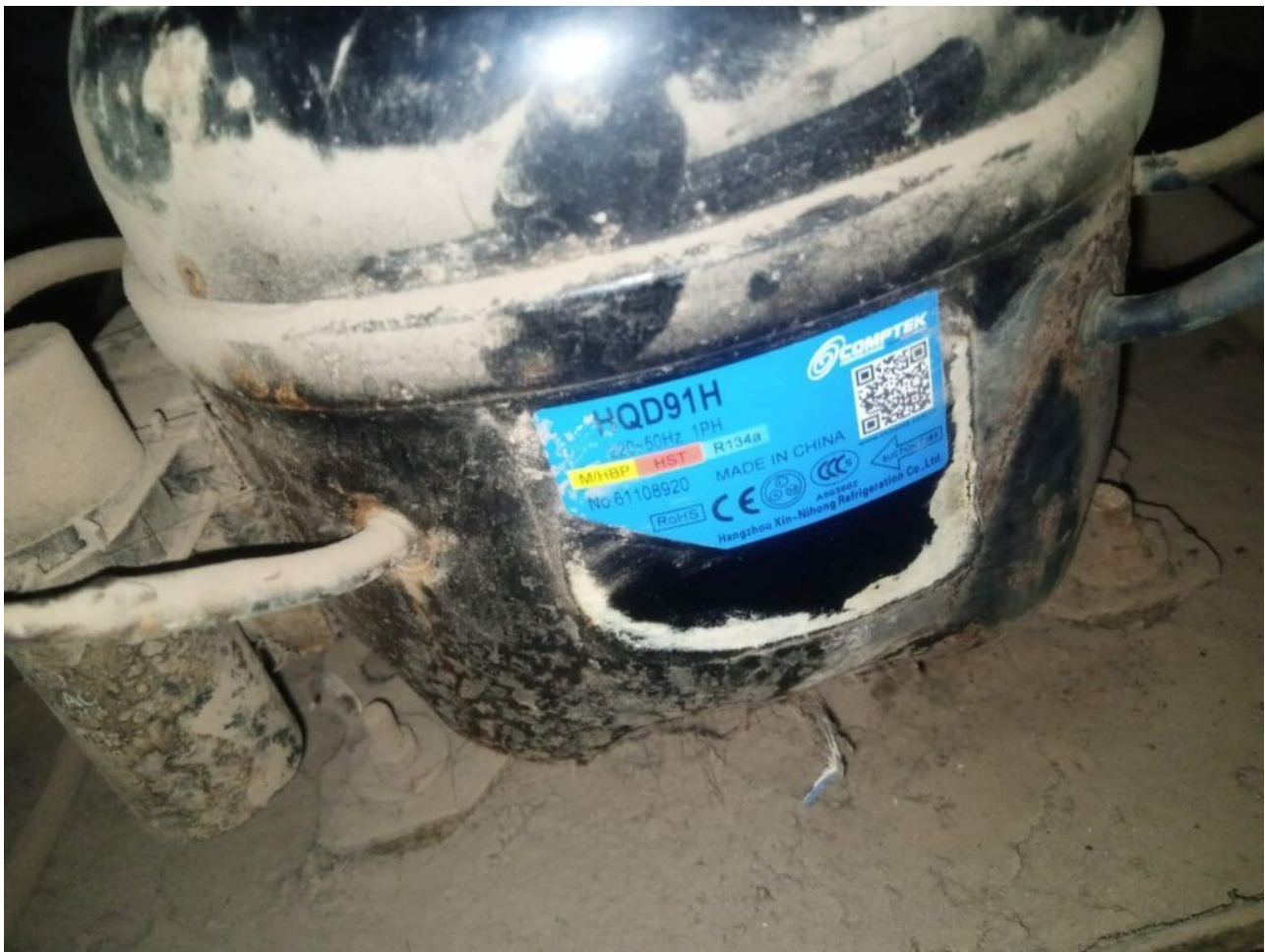
SP **10.5** **MPa**

TERMINALLY PROTECTED

Mitsubishi, Electric, fixed frequency, NH41VNHT 2.55HP,
single-phase, 220V, rotary, air condition, 26000 btu/h

**COMPTEK, Compressor,
HALQD91HHR, HQD91H, 1/4 hp++,
1/3 hp-, m/hbp, 250 w, 8.8
cm³, r134a**

written by Amina | 28 December 2023



Private Picture Copyright : WWW.MBSM.PRO

COMPTEK, Compressor, HALQD91HHR, HQD91H, 1/4 hp++, m/hbp, 250
w, 8.8 cm³

**Beko, refrigerator, DS13901S,
D70410e, b670,340 L,
Compressor Acc, hmk95at, 1/5
hp, r600a, 80 g, 160 w**

written by Amina | 28 December 2023

BEKO

Made in Turkey



PRODUCT NUMBER :	7276247994	VOLTAGE :	220-240 V -
PRODUCT CODE :	DS139010S	FREQUENCY :	50 Hz
MODEL :	D70410E / B670	WATTAGE :	140 W
CLASS :	T	CURRENT :	0,70 A
TYPE :	I	DEFROST POWER :	
TOTAL GROSS VOLUME :	340 L	REFRIGERANT TYPE :	R600a
FRIDGE COMP. NET. VOL. :	293 L	REFRIGERANT CHARGE :	80 g
FREEZER COMP. NET. VOL. :	98 L	CONSERVATION TIME FROM POWER FAILURE :	21,0 h
FROZEN FOOD COMP. NET. VOL. :		CHILLER COMP. NET.VOL. :	
FREEZING CAPACITY :	5,5 kg/24 h		

1310122002

OPPO A9 2020

17:20 2.22/10/10

Private Picture Copyright : WWW.MBSM.PRO

Beko, refrigerator, DS13901S, D70410e, b670, 340 L, Compressor Acc, hmk95at, 1/5 hp, r600a, 80 g, 160 w