

MBSM.PRO, All Compressor in One File , Pdf and Print

Category: compressor

written by www.mbsm.pro | 5 April 2021



Private Picture Copyright: WWW.MBSM.PRO

MBSM.PRO, All Compressor in One File , Pdf and Print

RÉFRIGÉRATEUR NIKAI, nrf480fn4, 165W, Compressor, ATD60L, Wanbao Huaguang Refrigerator, 1/5Hp, R134A, 120G, 1.25A, 220V/50HZ

Category: compressor

written by www.mbsm.pro | 5 April 2021

NIKAI®

REFRIGERATOR MODEL: NRF480FN4

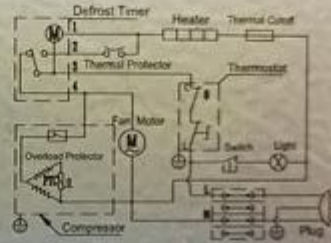
Rated Voltage	220-240V~
Rated Frequency	50Hz
Rated Current	1.25A
Rated Input Power	165W
Defrosting Power	150W
Electricity Consumption	1.385kw.h/24h
Climate Classification	T
Classification of Protection Against Electric Shock	Class I
Lamp Power	≤15W
Foaming Agent	CsH ₁₀ (CP)
Refrigerant and Inject Amount	R134a/120g
Freeze Capacity	5.0kg/24h
Weight	65kg

MADE IN CHINA

صنع في الصين

CB

ELECTRIC DIAGRAM



NIKAI GULF FZCO

PO BOX 9200 DUBAI UAE

نيكاي جلف فزكو

مستودع بريد 9200 دبي دولة الإمارات العربية المتحدة

REDMI NOTE 8 PRO
AI QUAD CAMERA



Private Picture Copyright : WWW.MBSM.PRO

RÉFRIGÉRATEUR NIKAI, nrf480fn4, 165W, Compressor, ATD60L, Wanbao Huaguang Refrigerator, 1/6Hp, R134A, 120G, 1.25A, 220V/50HZ

Compressor, 1/3HP, FR10S, 103U2930, SECOP, 103U, 2930, Compressor Danfoss, R12, 220-240V, 50Hz

Category: compressor

written by www.mbsm.pro | 5 April 2021



• DESCRIPTION

DESCRIPTION



		R404a / R507a		
13	104L2523	Danfoss Compressor SC 10CL	1/3 HP	352 W
14	104L2623	Danfoss Compressor SC 12CL	3/8 HP	445 W
15	104L2853	Danfoss Compressor SC 15CL	1/2 HP	560 W
16	104L2123	Danfoss Compressor SC 18CL	5/8 HP	615 W
17	104L2322	Danfoss Compressor SC 21CL	7/8 HP	702 W

Private Picture Copyright : WWW.MBSM.PRO

		R134a		
9	104G8240	Danfoss compressor SC 12G	3/8 HP	298 W
10	104G8520	Danfoss compressor SC 15G	1/2 HP	356 W
11	104G8820	Danfoss compressor SC 18G	5/8 HP	615 W
12	104G8140	Danfoss compressor SC 21G	7/8 HP	702 W

Private Picture Copyright : WWW.MBSM.PRO

		R12a		
5	103G2630	Danfoss compressor FR 6S	1/6 HP	119 W
6	103U2730	Danfoss compressor FR 7.5S	1/5 HP	138 W
7	103U2830	Danfoss compressor FR 8.5S	1/4 HP	164 W
8	103U2930	Danfoss compressor FR 10S	1/3 HP	194 W

Private Picture Copyright : WWW.MBSM.PRO

		R134a		
1	103G6660	Danfoss Compressor FR 6G	1/6 HP	119 W
2	103G6680	Danfoss compressor FR 7.5G	1/5 HP	138 W
3	103G6780	Danfoss compressor FR 8.5G	1/4 HP	164 W
4	103G6880	Danfoss compressor FR 10G	1/3 HP	194 W

Private Picture Copyright : WWW.MBSM.PRO

Sr Material Material Description Capacity Cons. Watts -25

R134a

1	103G6660	Danfoss	Compressor	FR 6G	1/6 HP	119 W
2	103G6680	Danfoss	compressor	FR 7.5G	1/5 HP	138 W
3	103G6780	Danfoss	compressor	FR 8.5G	1/4 HP	164 W
4	103G6880	Danfoss	compressor	FR 10G	1/3 HP	194 W

R12a

5	103G2630	Danfoss	compressor	FR 6S	1/6 HP	119 W
6	103U2730	Danfoss	compressor	FR 7.5S	1/5 HP	138 W
7	103U2830	Danfoss	compressor	FR 8.5S	1/4 HP	164 W
8	103U2930	Danfoss	compressor	FR 10S	1/3 HP	194 W

R134a

9	104G8240	Danfoss	compressor	SC 12G	3/8 HP	298 W
10	104G8520	Danfoss	compressor	SC 15G	1/2 HP	356 W
11	104G8820	Danfoss	compressor	SC 18G	5/8 HP	615 W
12	104G8140	Danfoss	compressor	SC 21G	7/8 HP	702 W

R404a / R507a

13	104L2523	Danfoss	Compressor	SC 10CL	1/3 HP	352 W
14	104L2623	Danfoss	Compressor	SC 12CL	3/8 HP	445 W
15	104L2853	Danfoss	Compressor	SC 15CL	1/2 HP	560 W
16	104L2123	Danfoss	Compressor	SC 18CL	5/8 HP	615 W
17	104L2322	Danfoss	Compressor	SC 21CL	7/8 HP	702 W

COMPRESSOR, DONPER, NE6213CK, 1/2hp, R404a

Category: compressor

written by www.mbsm.pro | 5 April 2021



Private Picture Copyright : WWW.MBSM.PRO

Ne6213Ck Compressor R404A Med Temp 12 Disp 1080W @ -5 1/2Hp 240V 50Hz



 **NE6213CK**
220-240V~50Hz 1PH
THERMALLY PROTECTED
RoHS   
<http://www.donper.com>

141011613510402180

R404A



NE6213CK
220-240V-50Hz 1PH
THERMALLY PROTECTED
RoHS CE ACC0083 2
R404A
http://www.danfoss.com
0126741729011801180

NE6213CK COMPRESSOR R404A MED TEMP 12 DISP 1080W @ -5 1/2HP 240V 50HZ

Displacement: 12 cm³

Power: 1/2 HP

Oil Charge: 450 +/- 10 mL

Cooling capacity: 1080W @-5 SST

COP: ASHRAE 1.80

Private Picture Copyright : WWW.MBSM.PRO

Testing condition:

Test conditions	H.B.P	
	ASHRAE	CECOMAF
Evaporating Temp.	+7.2°C	+5°C
Ambient Temp.	+35.0°C	+32°C
Condensing Temp.	+54.4°C	+55°C
Suction Temp.	+35.0°C	+32°C
Subcooling Temp.	+46.1°C	+55°C

3. Running Condition

Ambient temp.	0~43°C
Evaporating temp.	-15~10°C
Voltage range	187~264V
Max. condensing temp.	65°C
Max. winding temp.	130°C
Max. shell temp.	95°C
Max. discharge temp.	120°C
Start voltage	187V [5/5bar(abs)]
Shell min. resistance to pressure	35bar

Private Picture Copyright : WWW.MBSM.PRO

1. Compressor Type

Compressor model	NE6213CK
Rated voltage/frequency	220-240V~50Hz
Refrigerant	R404A
Application	High back pressure (H.B.P)
Cooling method	Fan Cooling
Start torque	High starting torque (HST)
Control device	Capillary tube
Motor type	CSIR

Private Picture Copyright : WWW.MBSM.PRO

Mbsm_dot_pro_private_PDF_ne6213ck-compressorTélécharger

Compressor, QD110, 3/10 HP, LBP, R12/R406, 276w, R12, R406

Category: compressor

written by www.mbsm.pro | 5 April 2021



Private Picture Copyright : WWW.MBSM.PRO

Quantité(Pièce) 1 – 30 31 – 70 71 – 150 >150
 Durée estimée (jours) 5 10 15 À négocier
 Tension: 220 V-240 V
 50 HZ
 Compresseur LBP R12/R406

Modèle	Valage	Fréquence	Déplacement	Capacité	Puissance d'entrée	Type de moteur	De charge d'huile	Type de refroidissement	Poids
	(V)	(Hz)	(CC)	(W)	(W)		(CC)		(Kg)
QD30	220-240	50	3.0	62	81	RSIR	180	ST	6.3
QD36	220-240	50	3.6	75	93	RSIR	180	ST	6.4

QD55	220-240	50	5.5	133	110	RSIR	240	ST	8.4
QD65	220-240	50	6.5	155	130	RSIR	240	ST	8.4
QD75	220-240	50	7.5	176	146	RSIR	240	ST	8.6
QD85	220-240	50	8.5	202	168	RSIR	240	ST	8.9
QD110	220-240	50	11.0	276	236	RSIR	240	ST	9.9
QD125	220-240	50	12.5	305	254	RSCR	280	ST	11.2



Private Picture Copyright: WWW.MBSM.PRO

Mbsm_dot_pro_private_PDF_QD110-1Télécharger

R406a 220~240V/50Hz

LBP
低背压

序号 No.	应用类型 Application	产品系列 Serial	产品型号 type	马力 Hp	电压/频率 Power Supply (V/Hz)	电机类型 Motor type	制冷量 Capacity		COP Power Efficiency		启动器 Starting Device	启动电容 Starting Capacitor (μF)	运行电容 Running Capacitor (μF)	冷却方式 Cool
							ASHRAE (-23.3°C)	CECOMAF (-25°C)	ASHRAE (-23.3°C)	CECOMAF (-25°C)				
1	LBP 低背压	WT	QD55	1/6	220~240V ~50Hz	RSIR	130	98	1.04	0.81	PTC	/	/	S
2			QD65	1/5		RSIR	158	119	1.08	0.84		/	/	S
3			QD75	1/4		RSIR	176	132	1.09	0.85		/	/	S
4			QD85	1/4		RSIR	202	152	1.10	0.86		/	/	S
5			QD91	1/4		RSIR	216	162	1.12	0.87		/	/	S
6	LBP 低背压	WQ	QD110	3/10	220~240V ~50Hz	RSIR	271	203	1.17	0.91	重锤 Starting Relay	/	/	F
7			QD128	1/3		RSIR	306	230	1.18	0.92		/	/	F
8			QD142	2/5		CSIR	333	250	1.19	0.93		80	/	F
9	LBP 低背压	SC	QD168	1/2	220~240V ~50Hz	CSIR	380	330	1.15	1.06	电流式 Current	80	/	F2
10			QD180	1/2		CSIR	440	382	1.15	1.07		80	/	F2
11			QD210	3/5		CSIR	510	443	1.17	1.08		80	/	F2

Private Picture Copyright: WWW.MBSM.PRO

Cubigel Compressors, Compressor,
GQY80AT, 1/4Hp, LBP, R134a,
8.1cmc,165 W, REFRIGERATEUR INDESIT

Category: compressor

written by www.mbsm.pro | 5 April 2021



BAJA presión					serie LBP														
CÓDIGO REMLE	MODELO	Potencia	Enfriam.	Cilind.	Producción Frigorífica en Watios.								Expans.	Acelle cm3	Peso Kg.	Motor	Arranq.	Modelos MIX Sustitutos R-12 / R134a	
• Últimas existencias					-35	-30	-25	-23,3	-20	-15	-10	Sustitutos R-12 / R134a							
451.00.0202	D40AS	1/10	S	4.00	40	56	74	81	96	121	149	C	240	6.7	RSIR	P	GD40AAa	451.00.3301	
451.00.0002	L45AV	1/8	S	4.50	39	57	79	87	105	136	171	C	300	8.4	RSIR	R	GL45AA	451.00.3302	
451.00.0003	L55AV	1/6	S	5.47	49	73	101	112	134	171	211	C	470	9.5	RSIR	R	GL60AA	451.00.3303	
451.00.0004	L76AV	1/5	S	7.57	58	89	125	139	168	217	271	C	530	10.5	RSIR	R	GL75AA	451.00.3304	
451.00.0104	L76BV	1/5	OC	7.57	58	89	125	139	168	217	271	C	530	10.5	RSIR	R			
451.00.0005	L88AV	1/4	S	8.85	69	107	150	167	200	255	317	C	530	11.0	RSIR	R	GL80AA	451.00.3305	
451.00.0105	L88BV	1/4	OC	8.85	69	107	150	167	200	255	317	C	530	11.0	RSIR	R	GL90AAa OC	451.00.3325	
451.00.0205	L88FW	1/4	F	8.85	69	107	150	167	200	255	317	C-V	530	10.0	RSIR	R	GL90AAb	451.00.3205	
451.00.0106	P12BW	1/3	OC	12.00	79	132	192	215	261	337	422	C	530	11.5	RSIR	R	GP12BB OC	451.00.3326	
451.00.0206	P12FW	1/3	F	12.00	79	132	192	215	261	337	422	C-V	530	11.5	RSIR	R	GP12FB	451.00.3206	

Private Picture Copyright : WWW.MBSM.PRO

Compresor GQY80AT, freon R134a, capacitate 8.1 cmc, capacitate frigorifica ASHRAE 222 W, capacitate frigorifica CECOMAF 165 W, racire statica #GQY80AT

Model: GQY80AT

Freon: R134a

Capacitate: 8.1 cmc

Capacitate frigorifica ASHRAE: 222 W

Capacitate frigorifica CECOMAF: 165 W

35 -30 -25 -10 w COP

- 451.00.3301 GD40AAa / GQY80AT 1/10 S 4.03 34 49 70 0.77 154 C 200 6.7 RSIR P •
- 451.00.3202 GD40AA 1/10 S 4.03 34 49 70 0.77 154 C 200 6.7 RSIR P •
- 451.00.3302 GL45AA / GQY80AT 1/8 S 4.55 37 56 81 0.81 183 C 265 8.3 RSIR P •
- 451.00.3303 GL60AA / GQY80AT 1/6 S 5.99 50 75 107 0.85 238 C 265 9.1 RSIR P •
- 451.00.3304 GL75AA / GQY80AT 1/5 S 6.65 57 85 121 0.87 267 C 345 9.6 RSIR P •
- 451.00.3305 GL80AA / GQY80AT 1/5 S 7.52 68 101 144 0.89 326 C 345 9.9 RSIR P •
- 451.00.3104 GL80AAb 1/5 OC 8.10 68 101 144 0.89 326 C-V 345 9.9 CSIR R •
- 451.00.3005 GL90AA 1/4 S 9.08 82 119 165 0.90 350 C 345 10.2 RSIR P •
- 451.00.3306 GL90AAa / GQY80AT 1/4 S 9.08 82 119 165 0.90 350 C 345 10.2 RSIR P •
-
- 451.00.3105 GL90AAb 1/4 OC 9.08 82 119 165 0.90 350 C-V 345 10.2 CSIR R •
- 451.00.3205 GL90AAb 1/4 F 9.08 82 119 165 0.90 350 C-V 345 10.2 CSIR R •
- 451.00.3325 GL90AAa 1/4 OC 9.08 82 119 165 0.90 350 C-V 345 10.2 CSIR R •
- 451.00.3106 GP12BB 1/3 OC 12.00 83 131 190 0.88 424 C 400 11.5 RSIR R •
- 451.00.3206 GP12FB 1/3 F 12.00 83 131 190 0.88 424 C 400 11.5 RSIR R •
- 451.00.3326 GP12BB 1/3 OC 12.00 83 131 190 0.88 424 C 400 11.5 RSIR R •
- 451.00.3218 GP14CB 3/8 F 14.17 99 158 228 0.90 509 C 400 11.5 RSIR R •
- 451.00.3223 GP16FB 3/8 F 16.15 109 182 266 0.89 585 C-V 530 12.0 CSIR R •
- 451.00.3224 GX18FB 3/7 F 18.40 123 199 291 0.91 660 C-V 500 15.1 CSIR R •
- 451.00.3225 GX21FB 2/3 F 20.72 151 243 351 0.93 778 C-V 500 15.5 CSIR R •
- 451.00.3403 GL45TB 1/6 F 4.50 76 134 342 1.62 412 C-V 300 8.4 CSIR R •
- 451.00.3503 GL45PB 1/6 F 4.50 76 134 342 1.62 412 C-V 300 8.4 CSIR R •
- 451.00.3404 GL60TB 1/5 F 5.67 95 170 437 1.82 527 C-V 300 9.5 CSIR R •
- 451.00.3504 GL60PB 1/5 F 5.67 95 170 437 1.82 527 C-V 300 9.5 CSIR R •
- 451.00.3406 GL80TB 1/5 F 7.57 111 212 554 1.83 667 C-V 300 9.5 CSIR R •

- 451.00.3505 GL90TB 1/4 F 8.85 142 259 661 1.91 796 C-V 300 10.8 CSIR R •
- 451.00.3506 GP12TB 3/8 F 12.05 169 338 893 1.80 1077 C-V 350 11.2 CSIR R •
- 451.00.3418 GP14TB 3/8 F 14.00 190 373 999 1.77 1208 C-V 400 11.5 CSIR R •
- 451.00.3513 GP14TB 3/8 F 14.00 190 373 999 1.77 1208 C-V 400 11.5 CSIR R •
- 451.00.3419 GX18TB 1/2 F 18.40 285 539 1390 1.91 1673 C-V 500 16.0 CSIR R •
- 451.00.3420 GX21TB 5/8 F 20.72 332 603 1550 1.90 1866 C-V 500 17.0 CSIR R •
- 451.00.3421 GX23TB 5/8 F 23.20 368 677 1730 1.89 2083 C-V 500 17.0 CSIR R •
- 451.00.3422 GS26TB 3/4 F 25.93 392 771 2071 2.09 1011 C-V 887 22.7 CSIR R •
- 451.00.3423 GS30TB 7/8 F 29.95 317 785 2452 2.33 3020 C-V 887 22.7 CSR R •
- 451.00.3424 GS34TB 1 F 34.42 476 1068 2852 2.28 3421 C-V 887 22.7 CSR R •



Private Picture Copyright : WWW.MBSM.PRO

BAJA presión					serie LBP										R-134a				
CÓDIGO REMLE	MODELO	Potencia	Enfri.	Cilindr.	Producción Frigorífica en Watts.								Expansión	Acelte cm3	Peso Kg.	Motor	Arranque	220-240V/50Hz	
• Gases sustitutos del R-12 y R-134a.					CECOMAF (W)														
• Últimas existencias					-35	-30	-25				-10								
					w	COP													
• 451.00.3301	GD40AAa / GVV40AA	1/10	S	4.03	34	49	70	0.77	154	C	200	6.7	RSIR	P	•				
• 451.00.3202	GD40AA	1/10	S	4.03	34	49	70	0.77	154	C	200	6.7	RSIR	P	•				
• 451.00.3302	GL45AA / GVV44AA	1/8	S	4.55	37	56	81	0.81	183	C	265	8.3	RSIR	P	•				
• 451.00.3303	GL60AA / GVV57AA	1/6	S	5.99	50	75	107	0.85	238	C	265	9.1	RSIR	P	•				
• 451.00.3304	GL75AA / GVV66AA	1/5	S	6.65	57	85	121	0.87	267	C	345	9.6	RSIR	P	•				
• 451.00.3305	GL80AA / GVV75AA	1/5	S	7.52	68	101	144	0.89	326	C	345	9.9	RSIR	P	•				
• 451.00.3104	GL80AAb	1/5	OC	8.10	68	101	144	0.89	326	C-V	345	9.9	CSIR	R	•				
• 451.00.3005	GL90AA	1/4	S	9.08	82	119	165	0.90	350	C	345	10.2	RSIR	P	•				
• 451.00.3306	GL90AAa / GQY80AT	1/4	S	9.08	82	119	165	0.90	350	C	345	10.2	RSIR	P	•				
• 451.00.3105	GL90AAb	1/4	OC	9.08	82	119	165	0.90	350	C-V	345	10.2	CSIR	R	•				
• 451.00.3205	GL90AAb	1/4	F	9.08	82	119	165	0.90	350	C-V	345	10.2	CSIR	R	•				
• 451.00.3325	GL90AAa	1/4	OC	9.08	82	119	165	0.90	350	C-V	345	10.2	CSIR	R	•				
• 451.00.3106	GP12BB	1/3	OC	12.00	83	131	190	0.88	424	C	400	11.5	RSIR	R	•				
• 451.00.3206	GP12FB	1/3	F	12.00	83	131	190	0.88	424	C	400	11.5	RSIR	R	•				
• 451.00.3326	GP12BB	1/3	OC	12.00	83	131	190	0.88	424	C	400	11.5	RSIR	R	•				
451.00.3218	GP14CB	3/8	F	14.17	99	158	228	0.90	509	C	400	11.5	RSIR	R	•				
451.00.3223	GP16FB	3/8	F	16.15	109	182	266	0.89	585	C-V	530	12.0	CSIR	R	•				
451.00.3224	GX18FB	3/7	F	18.40	123	199	291	0.91	660	C-V	500	15.1	CSIR	R	•				
451.00.3225	GX21FB	2/3	F	20.72	151	243	351	0.93	778	C-V	500	15.5	CSIR	R	•				

Private Picture Copyright: WWW.MBSM.PRO

ALTA - MEDIA presión					serie HMBP										R-134a				
CÓDIGO REMLE	MODELO	Potencia	Enfriamiento	Cilindrada	Producción Frigorífica en Watts.								Expansión	Acelte cm3	Peso Kg.	Motor	Arranque	220-240V/50Hz	
• Gases sustitutos de R-12 y R-134a.					CECOMAF (W)														
• Últimas existencias					-25	-15	5				10								
					w	COP													
• 451.00.3403	GL45TB	1/6	F	4.50	76	134	342	1.62	412	C-V	300	8.4	CSIR	R	•				
• 451.00.3503	GL45PB	1/6	F	4.50	76	134	342	1.62	412	C-V	300	8.4	CSIR	R	•				
• 451.00.3404	GL60TB	1/5	F	5.67	95	170	437	1.82	527	C-V	300	9.5	CSIR	R	•				
• 451.00.3504	GL60PB	1/5	F	5.67	95	170	437	1.82	527	C-V	300	9.5	CSIR	R	•				
451.00.3406	GL80TB	1/5	F	7.57	111	212	554	1.83	667	C-V	300	9.5	CSIR	R	•				
• 451.00.3505	GL90TB	1/4	F	8.85	142	259	661	1.91	796	C-V	300	10.8	CSIR	R	•				
• 451.00.3506	GP12TB	3/8	F	12.05	169	338	893	1.80	1077	C-V	350	11.2	CSIR	R	•				
• 451.00.3418	GP14TB	3/8	F	14.00	190	373	999	1.77	1208	C-V	400	11.5	CSIR	R	•				
• 451.00.3513	GP14TB	3/8	F	14.00	190	373	999	1.77	1208	C-V	400	11.5	CSIR	R	•				
451.00.3419	GX18TB	1/2	F	18.40	285	539	1390	1.91	1673	C-V	500	16.0	CSIR	R	•				
451.00.3420	GX21TB	5/8	F	20.72	332	603	1550	1.90	1866	C-V	500	17.0	CSIR	R	•				
451.00.3421	GX23TB	5/8	F	23.20	368	677	1730	1.89	2083	C-V	500	17.0	CSIR	R	•				
• 451.00.3422	GS26TB	3/4	F	25.93	392	771	2071	2.09	1011	C-V	887	22.7	CSIR	R	•				
451.00.3423	GS30TB	7/8	F	29.95	317	785	2452	2.33	3020	C-V	887	22.7	CSR	R	•				
• 451.00.3424	GS34TB	1	F	34.42	476	1068	2852	2.28	3421	C-V	887	22.7	CSR	R	•				

Private Picture Copyright: WWW.MBSM.PRO

BAJA presión					serie LBP										R-600a			
CÓDIGO REMLE	MODELO	Potencia	Enfriamiento	Cilindrada	Producción Frigorífica en Watts.								Expansión	Acelte cm3	Peso Kg.	Motor	Arranque	220-240V/50Hz
					-35	-30	-25	-23.3	-20	-15	-10							
451.00.0605	HQY55AA	1/9	S	5.46	28	44	62	69	83	105	130	C	210	8.9	RSIR/RSCR	P	•	
451.00.0610	HQY70AA	1/8	S	6.64	42	59	80	88	104	131	161	C	210	9.0	RSIR/RSCR	P	•	
451.00.0615	HLY99AA	1/6	S	9.93	69	90	119	130	155	198	248	C	345	9.6	RSIR/RSCR	P	•	
451.00.0620	HPY12AA	1/5	S	12.10	79	107	143	157	187	239	299	C	300	10.7	RSIR/RSCR	P	•	
451.00.0625	HPY14AA	1/5	S	14.31	92	124	165	181	215	274	342	C	300	11.0	RSIR/RSCR	P	•	
451.00.0630	HPY16AA	1/4	S	16.14	102	136	180	198	236	302	379	C	300	11.2	RSIR/RSCR	P	•	

Private Picture Copyright: WWW.MBSM.PRO

ALTA - MEDIA presión **serie HMBP** **R-22**

CÓDIGO REMLE	MODELO	Potencia	Enfriamiento	Cilindrada	Producción Frigorífica en Vatios.								Expansión	Aceite cm3	Peso Kg.	Motor	Arranque	220-240V/50Hz
					-20	-15	-10	-5	0	5	7.2	10						
451.00.1404	L45TN	1/5	F	4.50	157	206	265	333	410	496	537	592	C-V	400	9.5	CSIR	P	•
451.00.1405	L57TN	1/4	F	5.67	194	255	327	410	505	610	660	727	C-V	300	9.5	CSIR	R	•
451.00.1428	L76TN	3/8	F	7.57	268	347	441	550	675	814	881	969	C-V	470	10.0	CSIR	R	•
451.00.1408	L88TN	3/8	F	8.85	523	416	527	658	806	973	1052	1159	C-V	400	10.6	CSIR	R	•
451.00.1409	P12TN	1/2	F	12.00	412	537	689	868	1075	1309	1421	1570	C-V	400	12.3	CSR	R	•
451.00.1416	S22TN	7/8	F	21.77	645	890						3000	C-V	887	22.7	CSR	R	•
451.00.1418	S26TN	1 1/4	F	25.93	857	1182	1561	1993	2480	3021	3275	3615	C-V	887	22.7	CSR	R	•

Private Picture Copyright : WWW.MBSM.PRO

ALTA - MEDIA presión **serie HMBP** **sustituto del R-404a - R507 (*)**

220-240V 50Hz

CÓDIGO REMLE	MODELO	CV	Enfr.	Cil. cm3	Int. A	Conex.		Conex. aspir. Rotalock	Rendimientos (Wattios)*				Aplic.
						ODF	Rotalock		+7,2	-0°C	-5°C	-10°C	
451.00.0299	ML40TB	1/6	F	4.04	2,03	1/4"	-	3/16"	516	387	320	260	C-V
451.00.0300	ML45TB	1/5	F	4.50	2,19	1/4"	-	3/16"	559	432	356	289	C-V
451.00.0305	ML60TB	1/4	F	5.67	2,77	1/4"	-	3/16"	686	525	428	343	C-V
451.00.0310	ML80TB	3/8	F	7.57	3,27	1/4"	-	3/16"	931	720	590	475	C-V
451.00.0315	ML90TB	3/8	F	8.85	3,98	1/4"	-	3/16"	1118	861	705	569	C-V
451.00.0321	MP12RB	1/2	F	12.00	3,80	5/16"	-	1/4"	1765	1379	1142	931	C-V
451.00.0323	MP14RB	1/2	F	14.00	4,86	5/16"	-	1/4"	1765	1379	1142	931	C-V
451.00.0325	MX18TB	7/8	F	18.12	6,50	3/8"	-	1/4"	2275	1719	1379	1078	C-V
451.00.0326	MX21TB	1	F	21,74	6,28	3/8"	-	1/4"	2745	2063	1645	1275	C-V
451.00.0327	MS26TB-V	1 3/8	F	25.95	8,97	5/8"	1" 5/8"R	5/16"	3382	2578	2085	1647	C-V
451.00.0328	MA34TB-V	1 5/8	F	34,42	11,50	5/8"	1" 5/8"R	5/16"	4450	3480	2870	2310	C-V

Private Picture Copyright : WWW.MBSM.PRO

BAJA presión **serie LBP** **sustituto del R-404a - R507 (*)**

220-240V 50Hz

CÓDIGO REMLE	MODELO	CV	Enfr.	Cilindr. cm3	Int. A	Conex. aspir.		Conex. descar. ODF	Rendimientos (Wattios)*			Aplic.
						ODF	Rotalock		-35°C	-25°C	-10°C	
451.00.0450	ML45FB	1/6	F	4,60	1,58	1/4"	-	3,16"	70	130	270	C-V
451.00.0455	ML60FB	1/5	F	6,00	1,77	1/4"	-	3,16"	100	180	340	C-V
451.00.0460	ML80FB	1/4	F	8,10	2,21	1/4"	-	3,16"	140	250	490	C-V
451.00.0465	ML90FB	1/3	F	8,85	2,24	1/4"	-	3/16"	150	280	530	C-V
451.00.0470	MP12FB	3/8	F	12,00	2,88	3/8"	-	1/4"	170	350	720	C-V
451.00.0471	MP14FB	1/2	F	14,00	3,38	3/8"	-	1/4"	200	400	850	C-V
451.00.0472	MPT14LA [®]	1/2	F	14,32	2,70	3/8"	-	1/4"	360	550	1000	C-V
451.00.0473	MX18FBa	5/8	F	18,20	2,97	3/8"	-	1/4"	210	510	1160	C-V
451.00.0474	MX23FB	7/8	F	23,20	3,78	3/8"	-	1/4"	380	720	1450	C-V
451.00.0475	MS26FB-V	3/4	F	26,15	4,72	5/8"	1" 5/8"R	5/16"	360	820	1570	C-V
451.00.0476	MS30FB-V	7/8	F	30,00	5,60	5/8"	1" 5/8"R	5/16"	420	940	1900	C-V
451.00.0477	MS34FB-V	1	F	34,25	6,68	5/8"	1" 5/8"R	5/16"	480	1090	2230	C-V

Private Picture Copyright : WWW.MBSM.PRO

FRÍO DOMÉSTICO / COMERCIO

ALTA - MEDIA presión

serie HMBP

CÓDIGO REMLE	MODELO	Potencia	Enfriam.	Cilind.	Producción Frigorífic en Watts.										Expans.	Aceite cm3	Peso Kg.	Motor	Arranq.	Modelos MIX Sustitutos R-12 / 134a
Últimas existencias					-25	-20	-15	-10	-5	0	5	7.2	10	Sustitutos R-12 / R134a						
451.00.0403	L45PX	1/6	F	4.50	77	101	132	169	214	266	325	353	390	C	300	8.4	RSIR	R	GL45PB	451.00.3503
451.00.0404	L57PX	1/5	F	5.67	98	130	171	221	279	346	421	457	505	C	300	9.5	RSIR	R	GL60PB	451.00.3504
451.00.0405	L88TY	1/4	F	8.85	165	215	277	351	437	535	645	697	767	C-V	400	11.2	CSIR	R	GL90TB	451.00.3505
451.00.0406	P12TY	3/8	F	12.00	209	274	357	458	577	714	869	943	1043	C-V	400	11.2	CSIR	R	GP12TB	451.00.3506
451.00.0412	S26TY	7/8	F	25.93	392	565	771	1011	1284	1591	1930	2090	2303	C-V	887	22.7	CSIR	R	GS26TB-V	451.00.3422
451.00.0413	P14TY	7/16	F	14.00	243	318	412	526	659	812	983	1065	1174	C-V	400	11.5	CSIR	R	GP14TB	451.00.3513
451.00.0417	S34TY	1 1/5	F	34.42	644	886	1172	1501	1873	2289	2748	2963	3249	C-V	887	22.7	CSIR	R	GS34TB-V	451.00.3424

Private Picture Copyright : WWW.MBSM.PRO



BAJA presión

serie LBP

CÓDIGO REMLE	MODELO	Potencia	Enfriam.	Cilind.	Producción Frigorífic en Watts.								Expans.	Aceite cm3	Peso Kg.	Motor	Arranq.	Modelos MIX Sustitutos R-12 / 134a
Últimas existencias					-35	-30	-25	-23.3	-20	-15	-10	Sustitutos R-12 / R134a						
451.00.0202	D40AS	1/10	S	4.00	40	56	74	81	96	121	149	C	240	6.7	RSIR	P	GD40AAa	451.00.3301
451.00.0002	L45AV	1/8	S	4.50	39	57	79	87	105	136	171	C	300	8.4	RSIR	R	GL45AA	451.00.3302
451.00.0003	L55AV	1/6	S	5.47	49	73	101	112	134	171	211	C	470	9.5	RSIR	R	GL60AA	451.00.3303
451.00.0004	L76AV	1/5	S	7.57	58	89	125	139	168	217	271	C	530	10.5	RSIR	R	GL75AA	451.00.3304
451.00.0104	L76BV	1/5	OC	7.57	58	89	125	139	168	217	271	C	530	10.5	RSIR	R		
451.00.0005	L88AV	1/4	S	8.85	69	107	150	167	200	255	317	C	530	11.0	RSIR	R	GL80AA	451.00.3305
451.00.0105	L88BV	1/4	OC	8.85	69	107	150	167	200	255	317	C	530	11.0	RSIR	R	GL90AAa OC	451.00.3325
451.00.0205	L88FW	1/4	F	8.85	69	107	150	167	200	255	317	C-V	530	10.0	RSIR	R	GL90AAb	451.00.3205
451.00.0106	P12BW	1/3	OC	12.00	79	132	192	215	261	337	422	C	530	11.5	RSIR	R	GP12BB OC	451.00.3326
451.00.0206	P12FW	1/3	F	12.00	79	132	192	215	261	337	422	C-V	530	11.5	RSIR	R	GP12FB	451.00.3206

Private Picture Copyright : WWW.MBSM.PRO

Compresor GQY80AT, freon R134a, capacitate 8.1 cmc, capacitate frigorifica ASHRAE 222 W, capacitate frigorifica CECOMAF 165 W, racire statica #GQY80AT

Model: GQY80AT

Freon: R134a

Capacitate: 8.1 cmc

Capacitate frigorifica ASHRAE: 222 W

Capacitate frigorifica CECOMAF: 165 W

Racire : statica



Private Picture Copyright : WWW.MBSM.PRO

Tecumseh, Compressor, 5/8HP, HMBP – R404A , R448A , R449A, MBP, CAJ9480Z, 230V

Category: compressor

written by www.mbsm.pro | 5 April 2021



Private Picture Copyright : WWW.MBSM.PRO

Caractéristiques techniques

- Marque : TECUMSEH UNITÉ HERMÉTIQUE
- Modèle : CAJ9480Z-R
- CYLINDRÉE (CM³)15,2
- FLUIDER404A , R448A , R449A
- APPLICATIONHMBP
- PLAGÉ D'APPLICATION-25/+15
- PUISSANCE (W)1159
- PUISSANCE FRIGORIFIQUE (TK+40°C)15/3350 5/2355 -10/1294 -25/609
- TENSION (V)240/1/50
- DÉMARRAGECSR
- I.MAX (A)6,7
- Ø ASPIRATION1/2
- Ø REFOULEMENT5/16
- DIMENSIONS (MM)235x178x280
- Gaz: **R-404a**

- Température/Pression: **Haute Pression**
- Puissance: **5/8 HP**
- Voltage: **230 V**
- Type De Courant: **Monophasé**
- Fréquence: **50 Hz**
- Type De Compresseur: **Hermétique**
- Décalage: **15.2 cm³**
- Cons.Énergie -25°C: **496 W**
- Cons.Énergie -10°C: **669 W**
- Cons.Énergie -5°C: **718 W**
- Cons.Énergie 0°C: **762 W**
- Cons.Énergie +5°C: **798 W**
- Cons.Énergie +10°C: **828 W**
- T° De Condensation: **40 °C**
- Capacité Frigorífica -25°C: **524 Kcal/h**
- Capacité Frigorífica -20°C: **692 Kcal/h**
- Capacité Frigorífica -15°C: **887 Kcal/h**
- Capacité Frigorífica -10°C: **1113 Kcal/h**
- Capacité Frigorífica -5°C: **1374 Kcal/h**
- Capacité Frigorífica 0°C: **1677 Kcal/h**
- Capacité Frigorífica 5°C: **2025 Kcal/h**
- Capacité Frigorífica 10°C: **2425 Kcal/h**
- Tipo Test: **EN.12900**

Compresseur L'unité Hermetique – Tecumseh CAJ9480Z – R404A, R449A, R407A, R452A
220 – 240V 1~ 50 Hz

Cylindrée = 15.2 CM³

APPLICATIONS = HBP / MHBP

Moteur type: CSR





Private Picture Copyright : WWW.MBSM.PRO



Private Picture Copyright : WWW.MBSM.PRO



Private Picture Copyright : WWW.MBSM.PRO



Private Picture Copyright : WWW.MBSM.PRO





REDMI NOTE 9 PRO
AI QUAD CAMERA

Private Picture Copyright : WWW.MBSM.PRO



● ○ REDMI NOTE 9 PRO
∞ AI QUAD CAMERA

Private Picture Copyright : WWW.MBSM.PRO



● ○ REDMI NOTE 9 PRO
∞ AI QUAD CAMERA

Private Picture Copyright : WWW.MBSM.PRO

Mbsm_dot_pro_private_PDF_caj9480Z_2494-speceTélécharger

Compresseur AJ = Le produit de référence associant silence, fiabilité et

efficacité du froid commercial.

Product Code	Model Number	Compressor Horsepower	Compressor Displacement	Cooling Oil Charge
	CAJ9480Z-FZ	5/8 HP	15.2 cm ³ /rev	Fan 475 ml
	CAJ9510Z-FZ	1 HP	18.3 cm ³ /rev	Fan 475 ml
	CAJ9513Z-FZ	1 1/8 HP	24.2 cm ³ /rev	Fan 475 ml
	CAJ4517Z-FZ	1.25 HP	25.95 cm ³ /rev	Fan 475 ml
	TAJ4517Z-TZ	1.25 HP	25.95 cm ³ /rev	Fan 475 ml
	CAJ4519Z-FZ	1.5 HP	34.45 cm ³ /rev	Fan 475 ml
	TAJ4519Z-TZ	1.5 HP	34.45 cm ³ /rev	Fan 475 ml

Whirlpool, Aspera, NE2125E, LBP, capacitive, start inductive run, hermetic compressor, R22, 1/4Hp++ or 1/3Hp-

Category: compressor

written by www.mbsm.pro | 5 April 2021



Private Picture Copyright: WWW.MBSM.PRO

compressor Aspera NE2125E, LBP – R22, 220-240V / 1 / 50Hz, stroke volume 8.78 cm³, LRA 11.0A, motor type CSIR, capillary tube / expansion valve operation, oil AB 46.Cooling

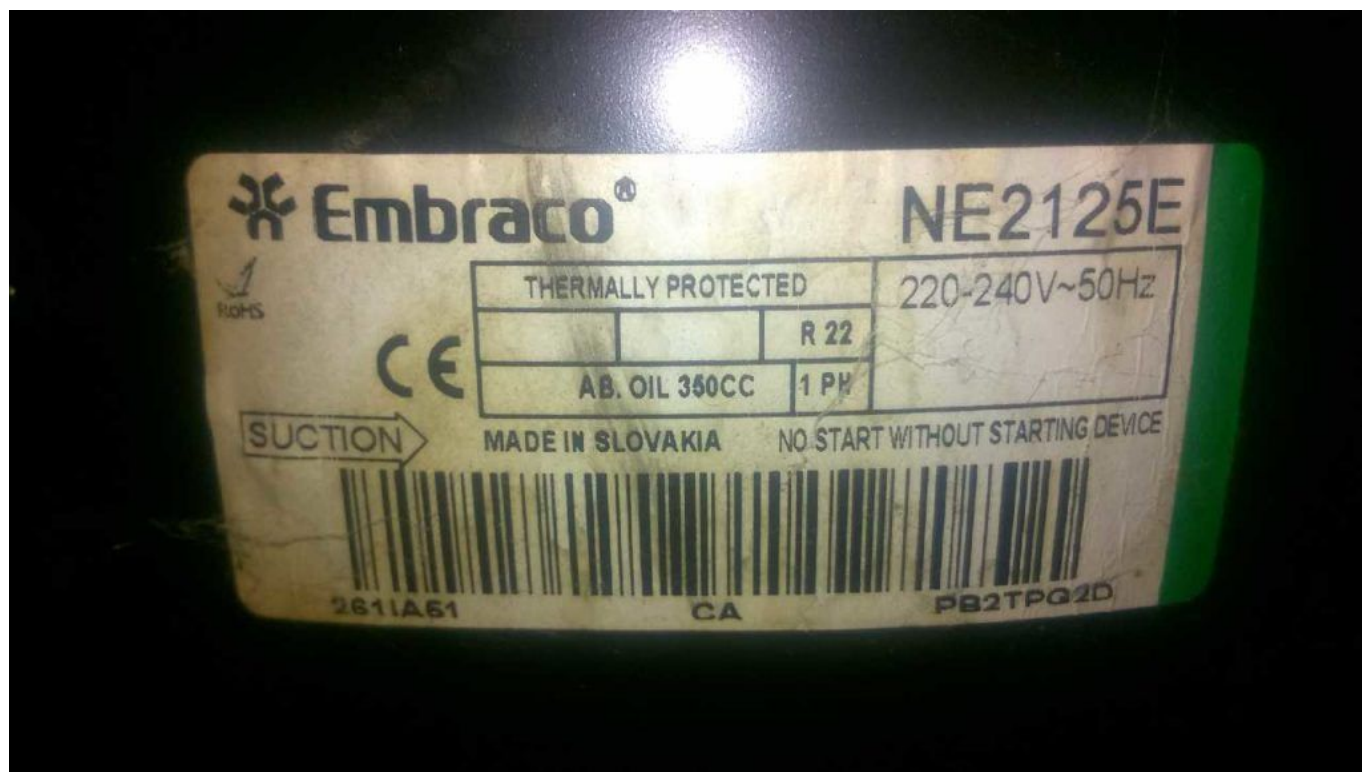
capacity measured for condensation temperature of: 45 ° C, Measurement conditions: ASHRAE

Unfortunately the compressor is no longer available.

If you would like an offer for an identical alternative, please email us or give

us a short call, we will prepare an offer for you. Cooling capacity (W) at To
 - 10 ° C - 15 ° C - 20 ° C - 25 ° C - 30 ° C

651 517 401 304 226



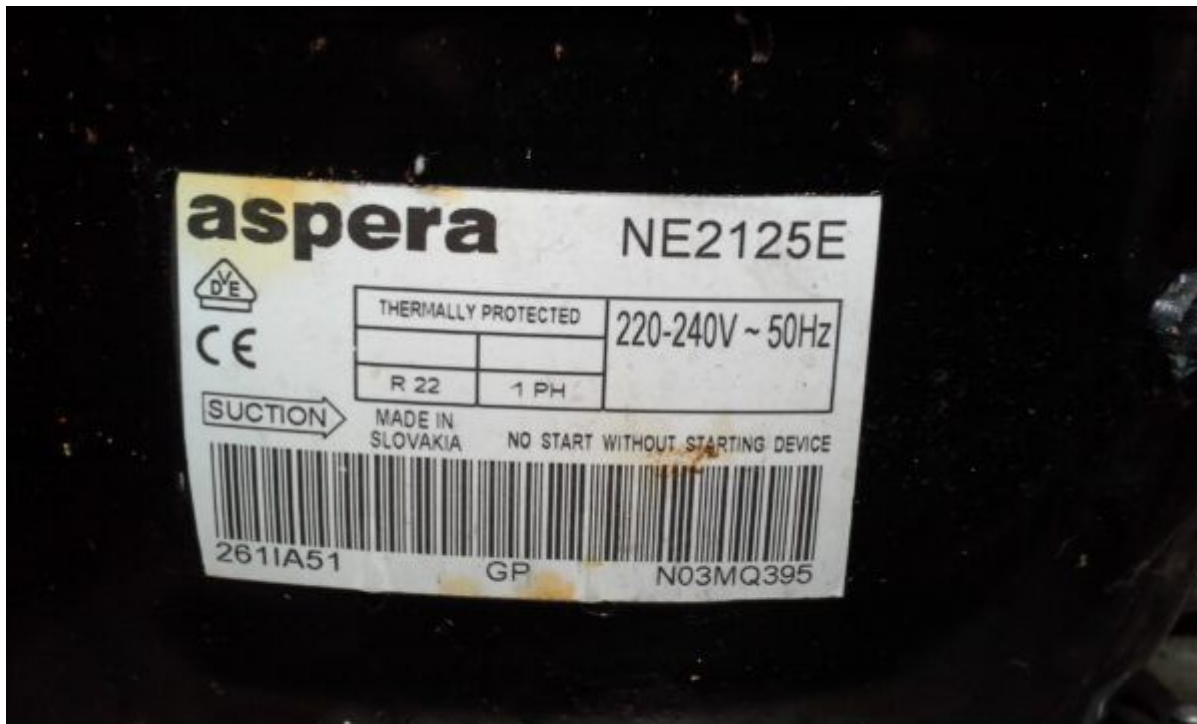
Private Picture Copyright: WWW.MBSM.PRO

R22 - LBP Applications

COMPRESSOR	FREQUENCY	DIMENSION	
		(from -30°C to -5°C evap. temp.)	-
NE2125E	50 Hz	0.91 mm I.D. x 3.2 m	-
	60 Hz	0.91 mm I.D. x 2.85 m	-
NE2134E	50 Hz	0.91 mm I.D. x 2.8 m	-
	60 Hz	0.91 mm I.D. x 2.5 m	-
T2140E	50 Hz	0.91 mm I.D. x 2.6 m	-
	60 Hz	0.91 mm I.D. x 2.3 m	-
T2155E	50 Hz	1.20 mm I.D. x 3.9 m	-
	60 Hz	1.20 mm I.D. x 3.5 m	-
T2168E	50 Hz	1.20 mm I.D. x 3.3 m	-
	60 Hz	1.20 mm I.D. x 2.8 m	-
NJ2178E	50 Hz	1.20 mm I.D. x 3.0 m	-

PictureS Mbsm Dot Pro : www.mbsm.pro

Private Picture Copyright: WWW.MBSM.PRO



Private Picture Copyright : WWW.MBSM.PRO



Private Picture Copyright : WWW.MBSM.PRO



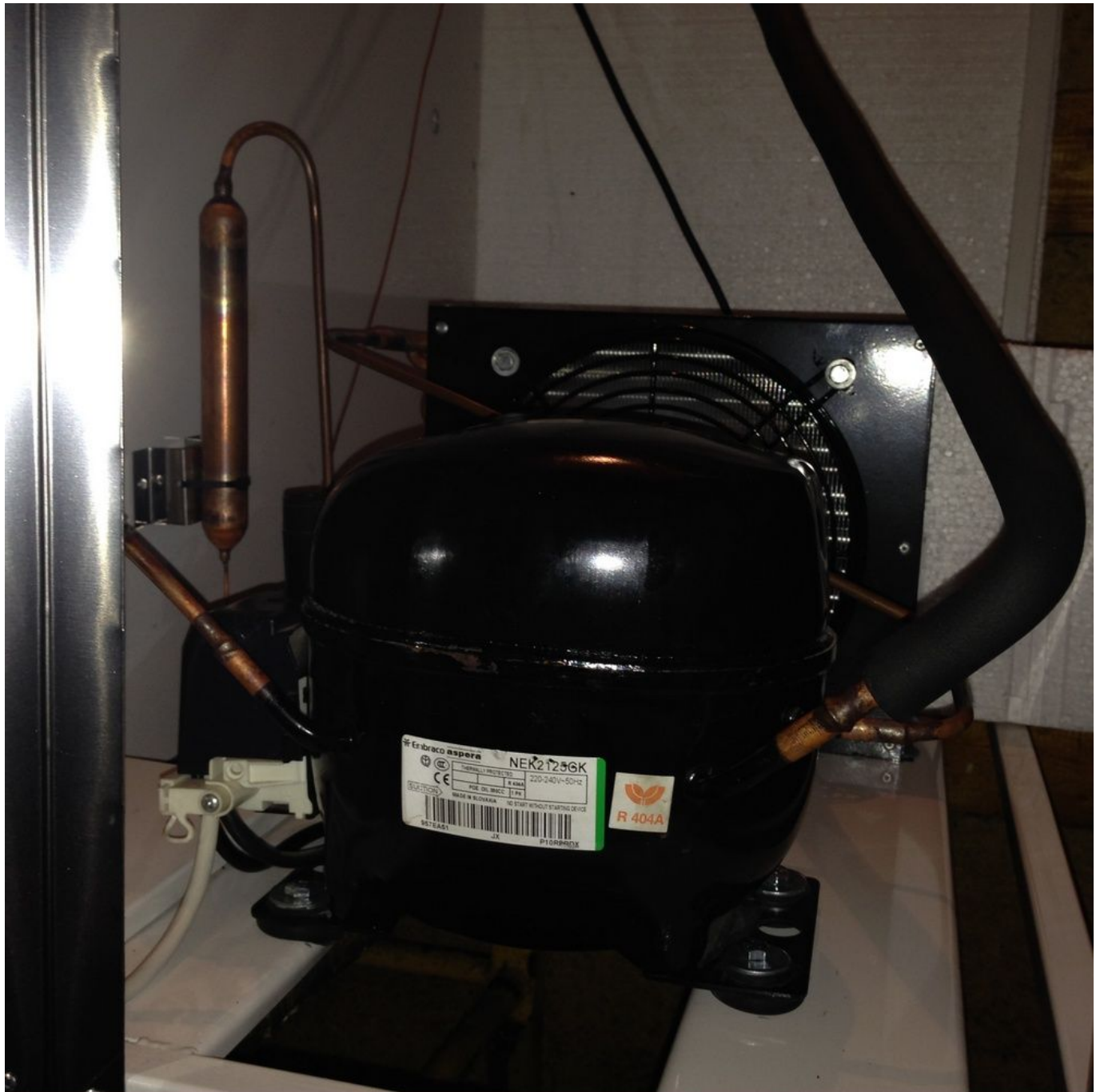
Private Picture Copyright : WWW.MBSM.PRO



Private Picture Copyright : WWW.MBSM.PRO









Private Picture Copyright: WWW.MBSM.PRO

Mbsm_dot_pro_private_PDF_ne2125e-Embraco_VerdichterTélécharger

Shipping Class	Default
Scope Of Application	LBP
Delivery Time	2-3 Weeks
Stock Availability	In Stock
Type	Reciprocating Piston
Condensation Temperature	45 ° C
Manufacturer	Aspera
Manufacturer No.	NE2125E
Power In Hp	1/4 +
Starting Torque	HST
Stroke Volume In Cm3	8.78
Measurement Conditions	Ashrae
Refrigerant	R22
Oil Type	IS046
Series	NE
Condensing Units Compressors	Compressor

Tension	220-240V
Weight In Kg	10.4

Copeland, Piston Type, Maneurop, Scroll type, Compressor

Category: compressor

written by www.mbsm.pro | 5 April 2021

Copeland - Piston Type



CRFD-0250TFD	2.5HP	220	30
CRFD-02750TFD	<3HP	220	30
CRFD-02750TFD	<3HP	380	30
CRFD-0300TFD	3HP	220	30
CRFD-0300TFD	3HP	380	30
CRFD-0400TFD	4HP	380	30
CRFD-0450TFD	4.5HP	380	30
CRFD-0500TFD	5HP	380	30

Copeland - Scroll Type



ZR22KC	2HP	220	16
ZR28KC	2.5HP	220	16
ZR34K1	3HP	220	16
ZR34K3	3HP	380	16
ZR36K1	>3HP	220	16
ZR36K3	>3HP	380	16
ZR47K3	4HP	380	16
ZR57K3	5HP	380	16
ZR61K3	>5HP	380	16
ZR72K3	6HP	380	16
ZR81K3	7HP	380	16
ZR94K3	8HP	380	16
ZR125K3	10HP	380	12
ZR144K3	12HP	380	12

Copeland - Piston type



QR90K1	7.5HP	380	4
QR12M1	10HP	380	4
QR15M1	12HP	380	4

Maneurop - Piston Type



MT28	7378BTU	220	8
MT36	9272BTU	380	8
MT40	10475BTU	380	8
MT50	12324BTU	380	8
MT64	15820BTU	380	8
MT80	19534BTU	380	8
MT100	23403BTU	380	4
MT125	30429BTU	380	4
MT160	38273BTU	380	4

Bristol - Piston type



H2NG104FRDF	8HP	380	8
H2NG124FRDF	10HP	380	8
H25G144DBEE	10HP	380	8
H2NG184FRDF	15HP	380	4
H2NG204FRDF	17HP	380	4
H2NG244FRDF	20HP	380	4
H2NG294FRDF	25HP	380	4
H24B25QDBEA	2HP	380	20
H24B28QDBEA	2.5HP	380	20
H24B31QDBEA	3HP	380	20
H24A62QDBEA	5HP	380	20

Copeland, Piston Type, Maneurop, Scroll type, Compressor

Copeland - Piston Type



CRFD-0250TFD	2.5HP	220	30
CRFD-02750TFD	<3HP	220	30
CRFD-02750TFD	<3HP	380	30
CRFD-0300TFD	3HP	220	30
CRFD-0300TFD	3HP	380	30
CRFD-0400TFD	4HP	380	30
CRFD-0450TFD	4.5HP	380	30
CRFD-0500TFD	5HP	380	30

Copeland - Scroll Type



ZR22KC	2HP	220	16
ZR28KC	2.5HP	220	16
ZR34K1	3HP	220	16
ZR34K3	3HP	380	16
ZR36K1	>3HP	220	16
ZR36K3	>3HP	380	16
ZR47K3	4HP	380	16
ZR57K3	5HP	380	16
ZR61K3	>5HP	380	16
ZR72K3	6HP	380	16
ZR81K3	7HP	380	16
ZR94K3	8HP	380	16
ZR125K3	10HP	380	12
ZR144K3	12HP	380	12

Copeland - Piston type



QR90K1	7.5HP	380	4
QR12M1	10HP	380	4
QR15M1	12HP	380	4

Maneurop - Piston Type



MT28	7378BTU	220	8
MT36	9272BTU	380	8
MT40	10475BTU	380	8
MT50	12324BTU	380	8
MT64	15820BTU	380	8
MT80	19534BTU	380	8
MT100	23403BTU	380	4
MT125	30429BTU	380	4
MT160	38273BTU	380	4

Bristol - Piston type



H2NG104FRDF	8HP	380	8
H2NG124FRDF	10HP	380	8
H25G144DBEE	10HP	380	8
H2NG184FRDF	15HP	380	4
H2NG204FRDF	17HP	380	4
H2NG244FRDF	20HP	380	4
H2NG294FRDF	25HP	380	4
H24B25QDBEA	2HP	380	20
H24B28QDBEA	2.5HP	380	20
H24B31QDBEA	3HP	380	20
H24A62QDBEA	5HP	380	20

Compressor, R0HS, 1/3HP, R134A, Tecumseh, CAE4448Y, HBP, 208V/50HZ 230V/60HZ

Category: compressor

written by www.mbsm.pro | 5 April 2021

Compressors	Displacement CC	Motor	Cooling capacity (Watt) EN12900 condensing T° +45°C , subcooling 0K, Return Gas 20°C							EN12900 evaporating T° -10°C		Weight Kg
			evaporating T°							Power input(Watt)	COP (W/W)	
			-15	-10	-5	0	5	10	15			
AE4425Y	6,69	CSIR	266	342	424	519	633	770	938	199	1,72	9,1
AEZ4425Y	7,6	CSIR	239	320	414	522	641	771	912	205	1,56	9,7
											9%	
AE4430Y	8,02	CSIR	294	382	488	613	760	930	1127	237	1,61	9,4
AEZ4430Y	8,8	CSIR	316	404	512	639	784	946	1122	258	1,57	10,2
											3%	
AE4440Y	10,33	CSIR	399	508	637	790	968	1176	1417	302	1,68	9,6
CAE4440Y	12	CSIR	399	519	666	837	1033	1250	1489	342	1,52	10,8
											10%	
AE4450Y	13,24	CSIR	526	672	843	1042	1273	1540	1847	370	1,82	10,5
CAE4448Y	14,2	CSIR	519	654	822	1023	1253	1512	1797	400	1,64	11,9
											10%	
AE4456Y	14,51	CSIR	579	737	921	1133	1380	1664	1990	424	1,74	11
CAE4456Y	16	CSIR	590	744	933	1156	1411	1695	2006	486	1,53	12,5
											12%	
AE4460Y	15,09	CSR	597	766	958	1181	1437	1732	2070	409	1,87	11,3



Private Picture Copyright: WWW.MBSM.PRO

Basic Info.

Model NO.

CAE4448Y

Refrigerant Type

Ammonia

Refrigerant

R134A

Voltage

208V/50Hz 230V/60Hz

Horsepower

1/3HP

Capacity(W)

519W

Input Power(Kw)

400W

Oil Charge (Cm3)

450

Net Weight(Kg)

12kg

Cop(W/W)

1.64

Trademark

tecumseh

Transport Package

Wooden Box

Specification

208V/50HZ 230V/60HZ

Origin

France

HS Code

8414309010

**1/3HP HBP Original Made in France R134A Tecumseh Compressor CAE4448Y
Refrigerator Compressor For Refrigerator/Showcase/Cold Room**

Product Description

Model: CAE4448Y

Brand : Tecumseh

Type: hermetic

Refrigerant: R134A

Voltage: 208V/50HZ 230V/60HZ

Cooling capacity: 519W

Input Power Watts: 400 W

Power: 1/3 HP

Description rapide

Condition: Nouveau

Configuration: Stationnaire

Modèle de lubrifica... Lubrifié

Point d'origine: Guangdong, China

Numéro de Type: CAE4448Y

Dimension (L*W*H): 1 unité

Certification: ROHS

Service après-vente...Aucun service d'outre-mer fourni

Chevaux: 1/3HP

Type: Piston

Source d'énergie: Alimentation AC

Muet: Oui

Marque nom: tecumseh

Tension: 208 ~ 220V/1PH/50HZ

Poids: 20kg

Garantie: 1 année

Gaz: R134a

Compressors	Displacement CC	Motor	Cooling capacity (Watt) EN12900 condensing T° +45°C , subcooling 0K, Return Gas 20°C							EN12900 evaporating T° -10°C		Weight Kg
			evaporating T°							Power input(Watt)	COP (W/W)	
			-15	-10	-5	0	5	10	15			
AE4425Y	6,69	CSIR	266	342	424	519	633	770	938	199	1,72	9,1
AEZ4425Y	7,6	CSIR	239	320	414	522	641	771	912	205	1,56	9,7
											9%	
AE4430Y	8,02	CSIR	254	382	488	613	760	930	1127	237	1,61	9,4
AEZ4430Y	8,8	CSIR	316	404	512	639	784	946	1122	258	1,57	10,2
											3%	
AE4440Y	10,33	CSIR	399	508	637	790	968	1176	1417	302	1,68	9,6
CAE4440Y	12	CSIR	399	519	666	837	1033	1250	1489	342	1,52	10,8
											10%	
AE4450Y	13,24	CSIR	526	672	843	1042	1273	1540	1847	370	1,82	10,5
CAE4448Y	14,2	CSIR	519	654	822	1023	1253	1512	1797	400	1,64	11,9
											10%	
AE4456Y	14,51	CSIR	579	737	921	1133	1380	1664	1990	424	1,74	11
CAE4456Y	16	CSIR	590	744	933	1156	1411	1695	2006	486	1,53	12,5
											12%	
AE4460Y	15,09	CSR	597	766	958	1181	1437	1732	2070	409	1,87	11,3

Private Picture Copyright : WWW.MBSM.PRO

Basic Info.

Model NO.	CAE4448Y
Refrigerant	R134A
Horsepower	1/3HP
Input Power(Kw)	400W
Net Weight(Kg)	12kg
Trademark	tecumseh
Specification	208V/50HZ 230V/60HZ
HS Code	8414309010

Refrigerant Type	Ammonia
Voltage	208V/50Hz 230V/60Hz
Capacity(W)	519W
Oil Charge (Cm3)	450
Cop(W/W)	1.64
Transport Package	Wooden Box
Origin	France

Private Picture Copyright : WWW.MBSM.PRO

Mbsm_dot_pro_private_PDF_cae4448yTélécharger