

**Mbsm.pro, KH690LN, no-frost,
refrigerator, Kiriazi, 690
liters, r134a, 190g,
Compressor, 1/3 hp**

written by Lilianne | 1 September 2023



Mbsm.pro, KH690LN, no-frost, refrigerator, Kiriazi, 690
liters, r134a, 190g, Compressor, 1/3 hp

**Mbsm.pro, FNT-B370K , 310
Liter, top-freezer,
refrigerator, condenser, 14**

Feet, Compressor, 1/5 hp, r600a or r134a

written by Lilianne | 1 September 2023



Private Picture Copyright : WWW.MBSM.PRO

Mbsm.pro, FNT-B370K , 310 Liter, top-freezer, refrigerator, condenser, 14 Feet, Compressor, 1/5 hp, r600a

Mbsm.pro, Compressor, Lz65CZ, 1/5 hp, r134a

written by Lilianne | 1 September 2023



Private Picture Copyright : WWW.MBSM.PRO

Mbsm.pro, Compressor, Lz65CZ, 1/5 hp, r134a

Mbsm.pro, Compressor, Rg208-12, R134a, 1/4 hp–

written by Lilianne | 1 September 2023



Private Picture Copyright : WWW.MBSM.PRO

Mbsm.pro, Compressor, Rg208-12, R134a, 1/4 hp-

Mbsm.pro, Compressor, All Tee, Turkey, TEE Compressor

written by Lilianne | 1 September 2023



Private Picture Copyright : WWW.MBSM.PRO



Private Picture Copyright : WWW.MBSM.PRO

Mbsm.pro, Compressor, TEE, NTU150MT, R600a, $150 \text{ kcal} * 1.163 = 174 \text{ w}$, 10 W lara, 1/5 hp



Private Picture Copyright : WWW.MBSM.PRO

This 170 kcal/h means 197.6 watts, which means a quarter of a horsepower $\approx 1/4$ hp
I mean, if you install a 134 compressor in its place, you can install five or a quarter, considering the R600a refrigerator

Mbsm.pro, Compressor, Lennox, 1/3HP, QD120, 1/4HP, QD 90, 1/5HP, QD 70 , 1/6HP, QD 59

written by Lilianne | 1 September 2023

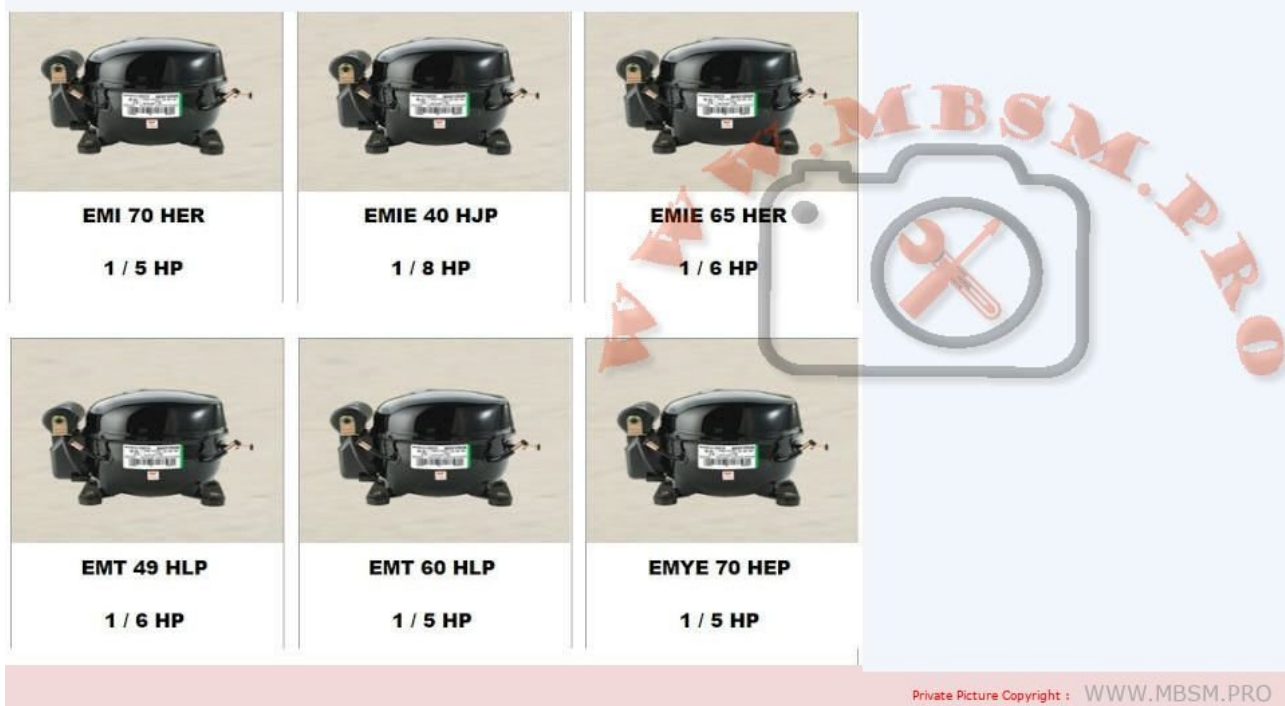


Mbsm.pro, Compressor, Lennox, 1/3HP, QD120, 1/4HP, QD 90,
1/5HP, QD 70 , 1/6HP, QD 59

Mbsm.pro, Compressor, Embraco, EMYE 70 HEP, 1/5 Hp,

LBP, emye70

written by Lilianne | 1 September 2023



Mbsm.pro, Compressor, Embraco, EMYE 70 HEP, 1/5 Hp, LBP, emye70

Mbsm.pro, Compressor, Tee compressor, ae170ad, ae170ac, ae170ap, 150 w, 1/5 hp, r12, lbp

written by Lilianne | 1 September 2023



Private Picture Copyright : WWW.MBSM.PRO

Mbsm.pro, Compressor, Tee compressor, ae170ad, ae170ac, ae170ap, 150 w, 1/5 hp, r12

**Mbsm.pro, Compressor, 1 1/8
HP, Hermetic, Piston,
Tecumseh Compressor
,CAJ9513T, TAJ9513T, r404a /
r22**

written by Lilianne | 1 September 2023



Private Picture Copyright : WWW.MBSM.PRO

Mbsm.pro, Compressor, 1 1/8 HP, Hermetic, Piston, Tecumseh Compressor ,CAJ9513T, TAJ9513T, r404a / r22

Mbsm.pro, Compressor, zmc, hl105at, 1/6 hp, lbp

written by Lilianne | 1 September 2023

ECOMAF	ASHRAE	CECOMAF	ASHRAE	CECOMAF	ASHRAE	Voltage	Temp C				
25°C-	23.3°C-	25°C-	23.3°C-	25°C-	23.3°C-						
W/W	W/W	W/W	W/W	W	kcal/h						
		1.06	1.37	89	104	A	43	1/7	LBP::R600a	HL80AH	<input type="checkbox"/>
		1.08	1.38	99	115	A	43	1/7	LBP::R600a	HL90AH	<input type="checkbox"/>
		1.03	1.34	103	120	A	43	1/6	LBP::R600a	HL99AH	<input type="checkbox"/>

Private Picture Copyright : WWW.MBSM.PRO

Mbsm.pro, Compressor, zmc, hl105at, 1/6 hp, lbp