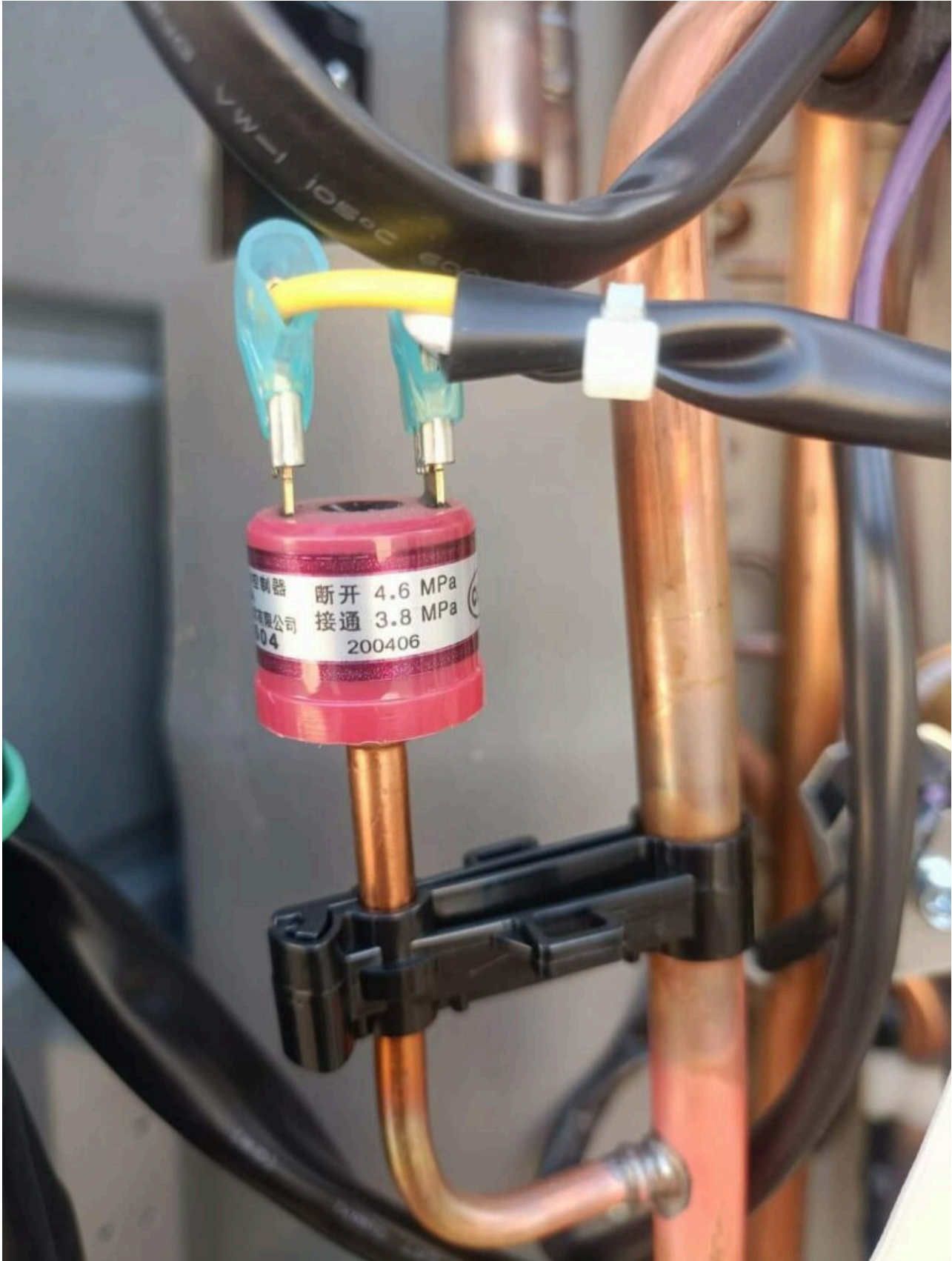


low-pressure cut-off switch

Category: expertise

written by www.mbsm.pro | 2 February 2024



A low-pressure cut-off switch is a safety device used in various applications to protect equipment from damage caused by low pressure. They are commonly found

in:

- **Water pumps:** In well water systems, a low-pressure cut-off switch prevents the pump from running dry, which can overheat and damage the pump. When the water pressure falls below a set point, the switch turns off the pump.



Lowpressure cutoff switch for water pumps

- **Refrigeration systems:** In refrigerators and air conditioners, a low-pressure cut-off switch protects the compressor from damage if the refrigerant level falls too low. This can happen due to a leak or a malfunction.



Lowpressure cutoff switch for refrigeration systems

- **Air compressors:** In air compressors, a low-pressure cut-off switch prevents the compressor from overheating if the air pressure falls below a set point. This can happen if there is a leak in the system or if the compressor is not properly lubricated.



Lowpressure cutoff switch for air compressors

- **Oil burners:** In oil burners, a low-pressure cut-off switch prevents the burner from operating if the oil pressure falls below a set point. This can happen if there is a leak in the oil line or if the oil filter is clogged.

Low-pressure cut-off switches are typically adjustable, so the pressure at which they trip can be set to meet the specific needs of the application. They are a vital safety device that can help to prevent costly damage to equipment.



