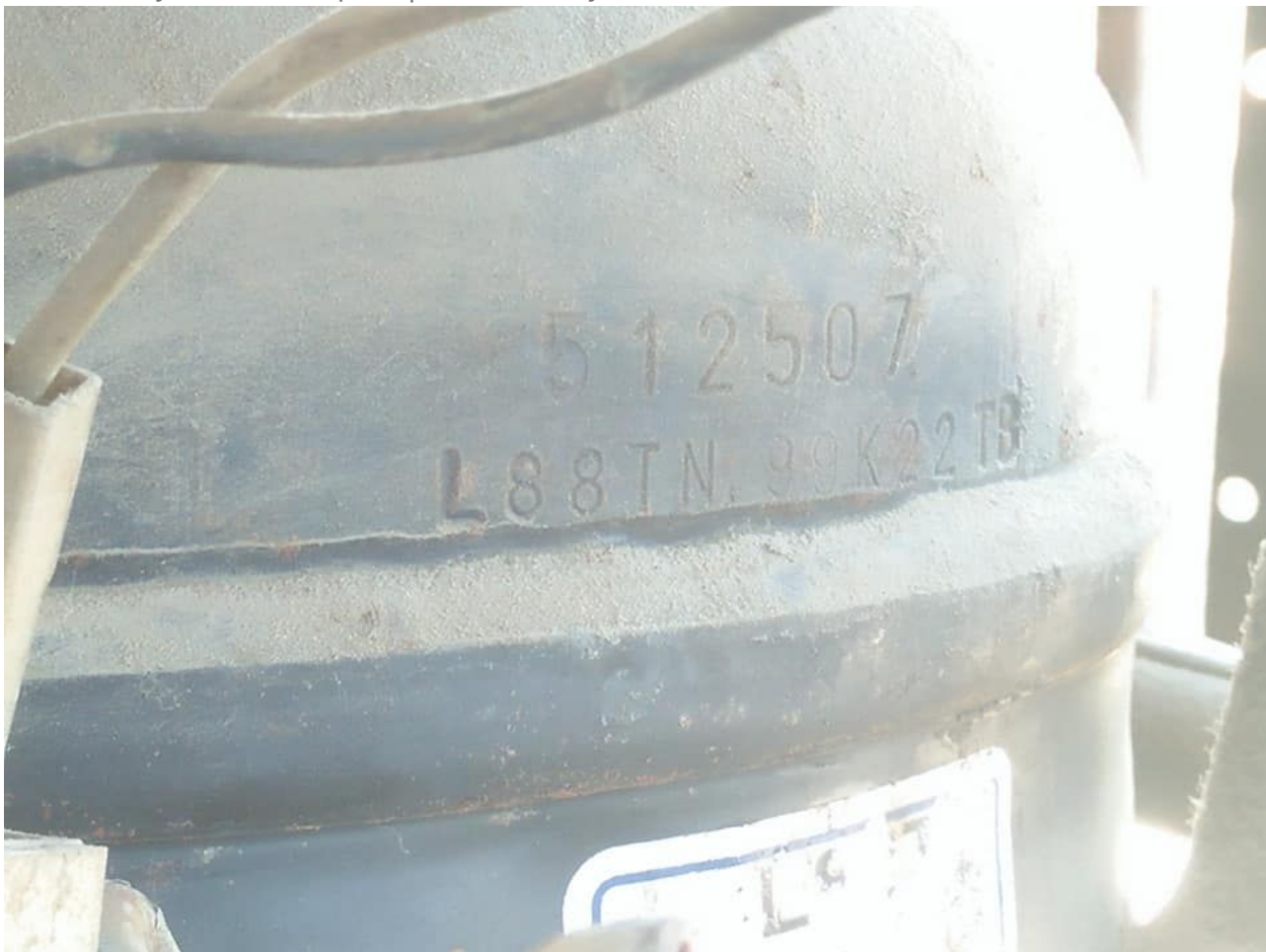


Mbsm.pro, Hermetic, Compressor,
Electrolux, L88TN, 3/8 Hp ++, R-22,
HMBP, Q=416W, tk-15°C/, tc55, 230V
50Hz, L88TN , ACC, ALPENINOX, ASCASO,
BARLINE ,L88TN, CUBIGEL, EUNASA,
EURFRIGOR , GEV, ICEMATIC, ITV,
SCOTSMAN, SIMAG, ZANUSSI

Category: compressor

written by www.mbsm.pro | 16 January 2022



Private Picture Copyright : WWW.MBSM.PRO

*All, Aspera, R12, Compressor, 240V~50hZ, EMBRACO, j2170,
Compressor Motor, CC 34.37, 1HP*

This compressor is no longer available and can be replaced as an alternative by the Aspera NEK2134GK, LBP – R404A, R507,220-240V 50Hz compressor. Differences: L88TN has 8.85 cm³, HBP/MBP, Mineralö lNEK2134GK has 8.78 cm³. Capacity: 3/8 HP Cooling capacity at +5 / +55:562 W, power consumption: 975 W max. Ambient temperature: 43 ° C Displacement: 8.85 cm³ Engine type: CSIR Capacity: 400 cm³

Type: ISO VG 68 MINERAL Start element: HST Voltage range: 198-264 V Starting current: 15.8 A Weight: 10.6 kg Connections: 8.1 x 6.5 mm Main winding resistance: 4.38 (25° C) Ohm Winding resistance: 20.6 (25° C) Ohm. cooling power measured for condensation temperature of: 55° C, measuring conditions: ASHRAE

NE2125GK, NEK2130GK, NEK6181GK, EMT6165GK, ML90FB, KB2416ZK2, R404a/R507, 1/3HP, LBP, All COMPRESSEURS, GAZ R404A – R507, EMBRACO

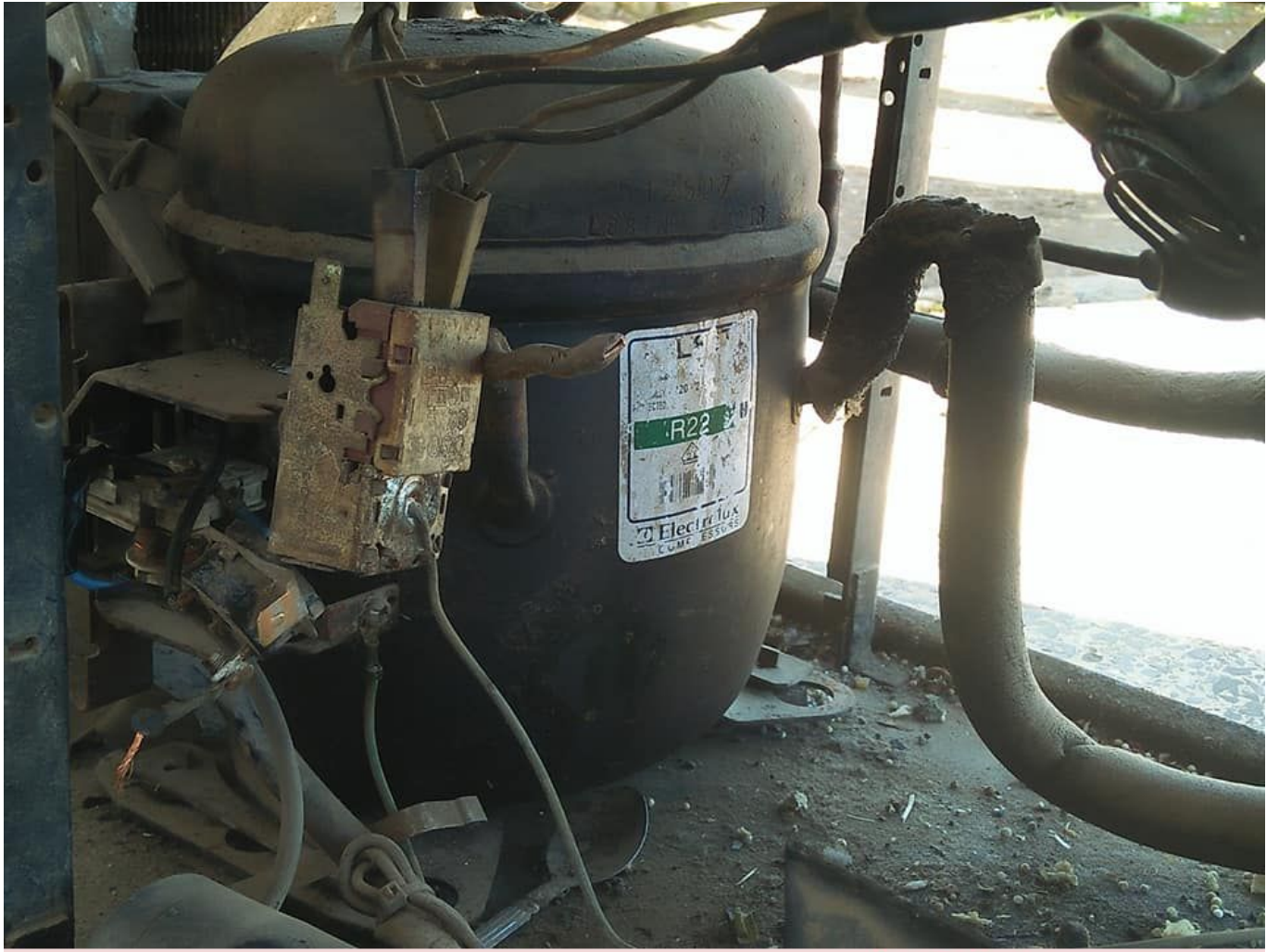
fréon	R22
type	L88TN
cylindrée	8,9 cm ³
système de moteur	CSIR
voltage	230 V
hauteur	175,5 mm
construction	complètement hermétique
puissance à -10°C	528 W
puissance à -5°C	659 W
puissance à 0°C	808 W
puissance à +5°C	975 W
puissance à -25°C	248 W
puissance à -20°C	323 W
puissance à -15°C	416 W
puissance à +10°C	1161 W
méthode de test	ASHRAE
utilisation	HMBP
fréquence	50 Hz
poids	10,6 kg





Private Picture Copyright : WWW.MBSM.PRO





Private Picture Copyright : WWW.MBSM.PRO





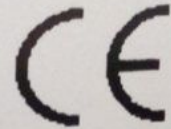
cubigel
compressors

L88TN

THERMALLY
PROTECTED

220-240V~50Hz PH1

R22



MADE IN
SPAIN



9512162215100007

2

11042

Private Picture Copyright: WWW.MBSM.PRO

Mbsm_dot_pro_private_PDF_l88tn-

elektronika_sa_com_pl_tcmodel_php_line_HCPSA_HMBP_2006_mTélécharger

Mbsm_dot_pro_private_PDF_l88tn-danfoss_L88TN_R22_220_50Télécharger

Mbsm_dot_pro_private_PDF_L88TNTélécharger

Mbsm_dot_pro_private_PDF_huayi_compressor_L88TN_R22_200_50Télécharger