

Mbsm.pro, compressor, 1/4HP, Refrigeration, R134A , Refrigerator, freezer, QD91H, LBP

Category: compressor

written by www.mbsm.pro | 6 January 2022



Private Picture Copyright: WWW.MBSM.PRO

Product Description

Test Conditions

Evap. Temp.: -23.3° C

Cond. Temp.: 54.4° C

Amb. Temp.: 32.2° C

Suction. Temp.: 32.2° C

Subcooling Temp.: 32.2° C

LBP ASHRAE

Model: QD91H

Power Supply: 220-240V/50Hz

Displacement (cm³): 9.1

Cooling Capacity (W): 208

Rated Power (W): 183

Nominal power (HP): 1/4

COP (W/W): 1.13
 Rated Current (A): 1.55
 Motor Type: RSIR
 Capacitor (μ F): /
 Starting Relay: Applying Relay
 Cooling Type: S
 Packing (PCS/pallet): 100
 1x 20'FCL (PCS): 2000

Characteristics

1. Small size,
2. High efficiency & reliability
3. Reliable starting performance
4. Low sound & vibration

Application

LBP, used for drinking fountain, refrigerator, freezer, liquor cabinet, ice-making machine and other medium and small sized refrigeration machines.

1. use R134a refrigerant
2. 220V/50-60Hz, applied LBP
3. used for display cabinets and other medium-sized, large refrigeration equipment
4. with CCC/CE certification

220V/50-60HZ Compressors: WS Series are in fully enclosed crank and connecting rod structure and with reciprocating piston in the semi-direct suction mode
 The main feature: good startup performance, low noise and good reliability

R134a-LBP
 COMPRESSOR
 PERFORMANCE
 PARAMETER

Wansheng
 R134a low back pressure(LBP) compressor

Test Conditions	Evap. Temp.: -23.3°C	Cond. Temp.: 54.4°C
-----------------	-------------------------	------------------------

Amb. Temp.:	Suction. Temp.:
32.2°C	32.2°C

Subcooling Temp.: 32.2°C LBP ASHRAE

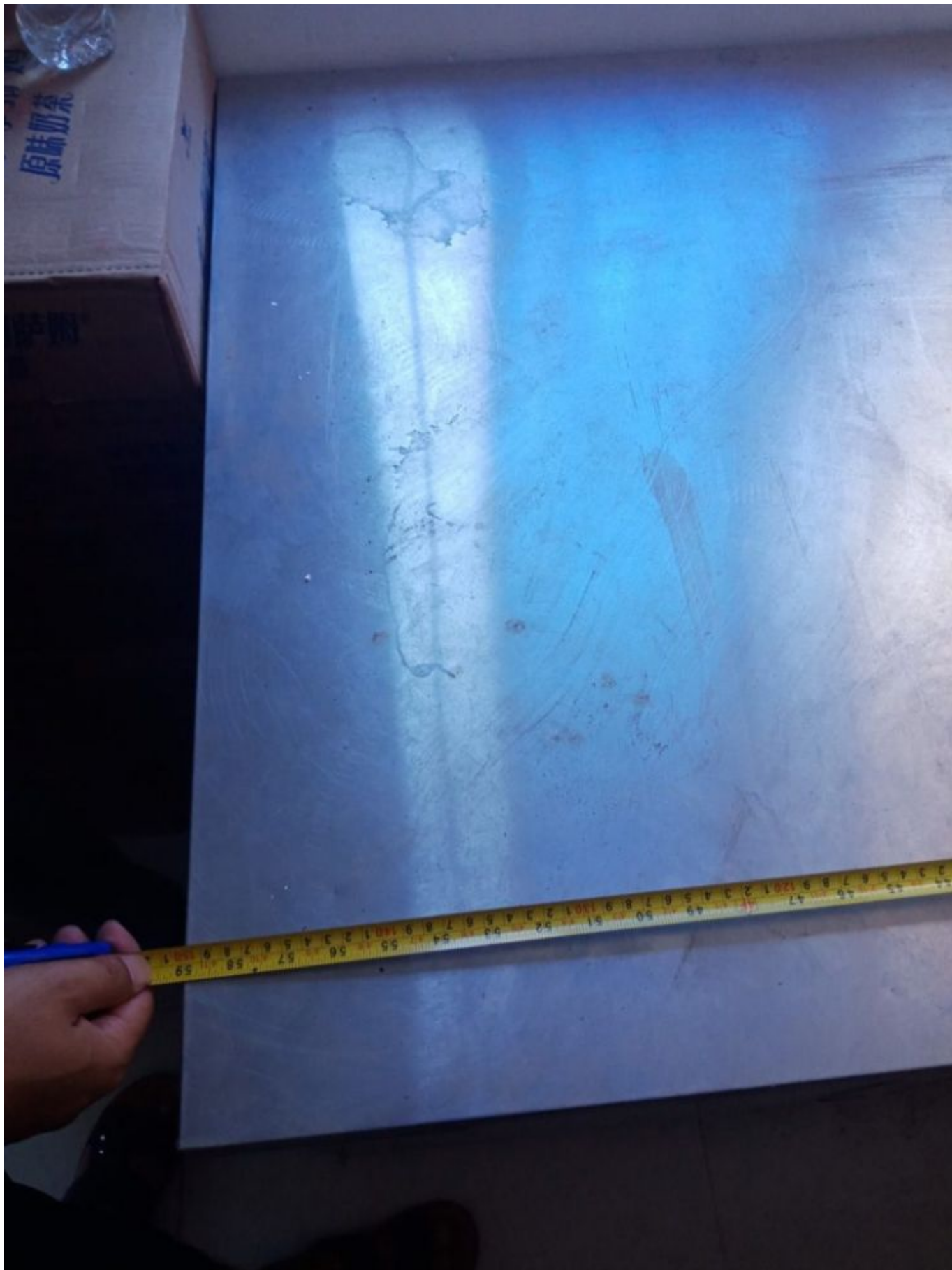
Model	Displacement (cm ³)	Cooling Capacity (W)	Rated Power (W)	Nominal power (HP)	COP (W/W)	Motor Type	Capacitor (μ F)	Starting Relay	Cooling Type
WS series 220V/50Hz QD91H	9.1	208/235	173/181	1/4	1.2/1.3	RSIR /		PTC	S

Mbsm_dot_pro_private_PDF_qd91h-refrigeratioTélécharger

产品	规格	额定功率	制冷量	重量/kg
R134a压缩机	QD52H	125W	130W	5.5
	QD65H	155W	168W	7.4
	QD75H	164W	180W	7.4
	QD110H	240W	258W	---
	QD128H	265W	280W	9.9
	QD142H	285W	305W	10
	QD91H	183W	208W	--













ISCEON

HERMETIC COMPRESSOR

<input type="checkbox"/>	QD65H 1/6
<input checked="" type="checkbox"/>	QD75H 1/5
<input type="checkbox"/>	QD91H 1/4
<input type="checkbox"/>	QD110H 1/3
IPH 220-240V 50/60HZ	