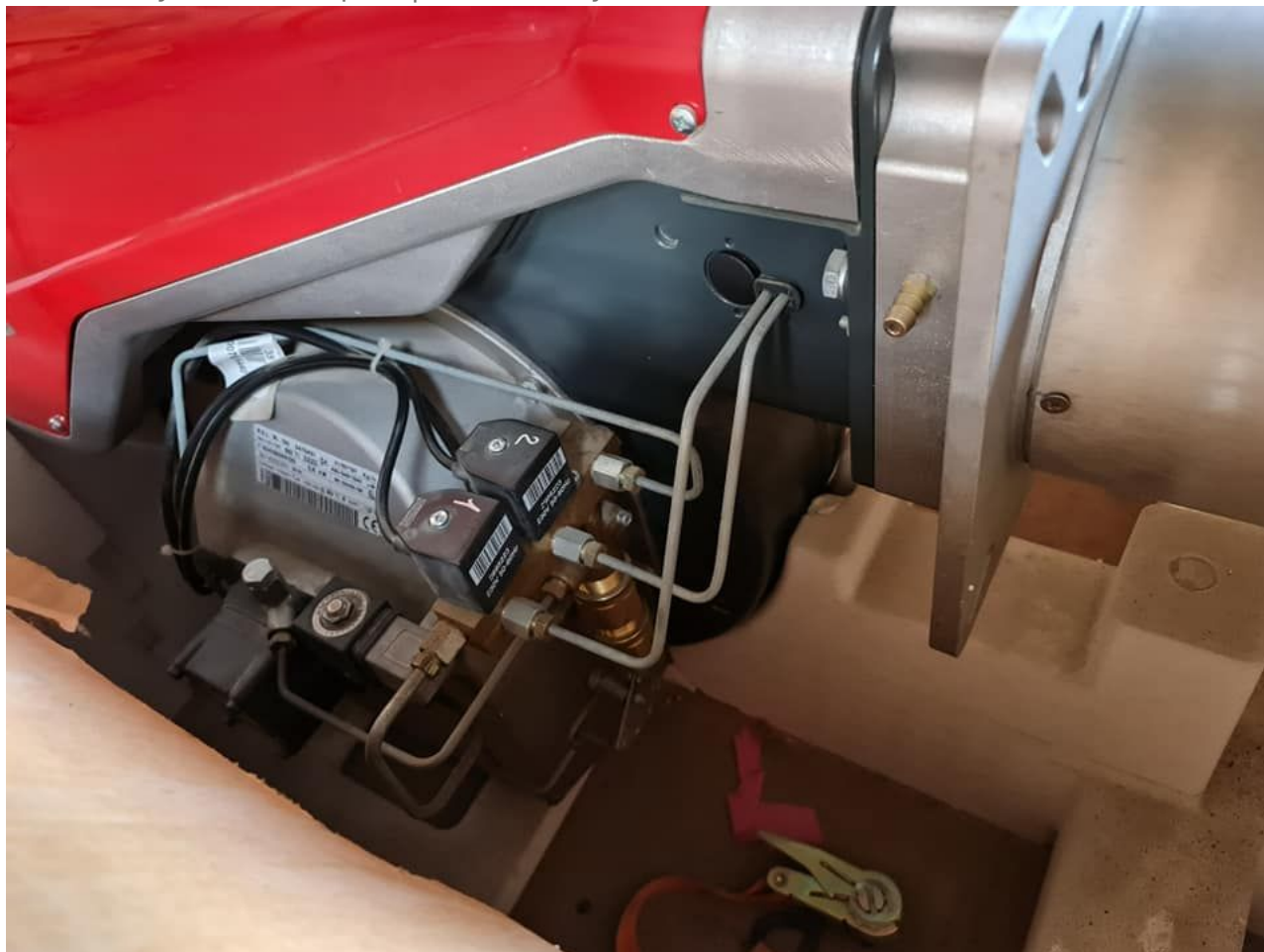


MAZOUT, Brûleur, FIOUL, Combust, RIELLO, RBL, R.B.L, Baltur , POUR CHAURIDIÈRE DE CHAUFFAGE DOMESTIQUE

Category: Plomberie,Technologie

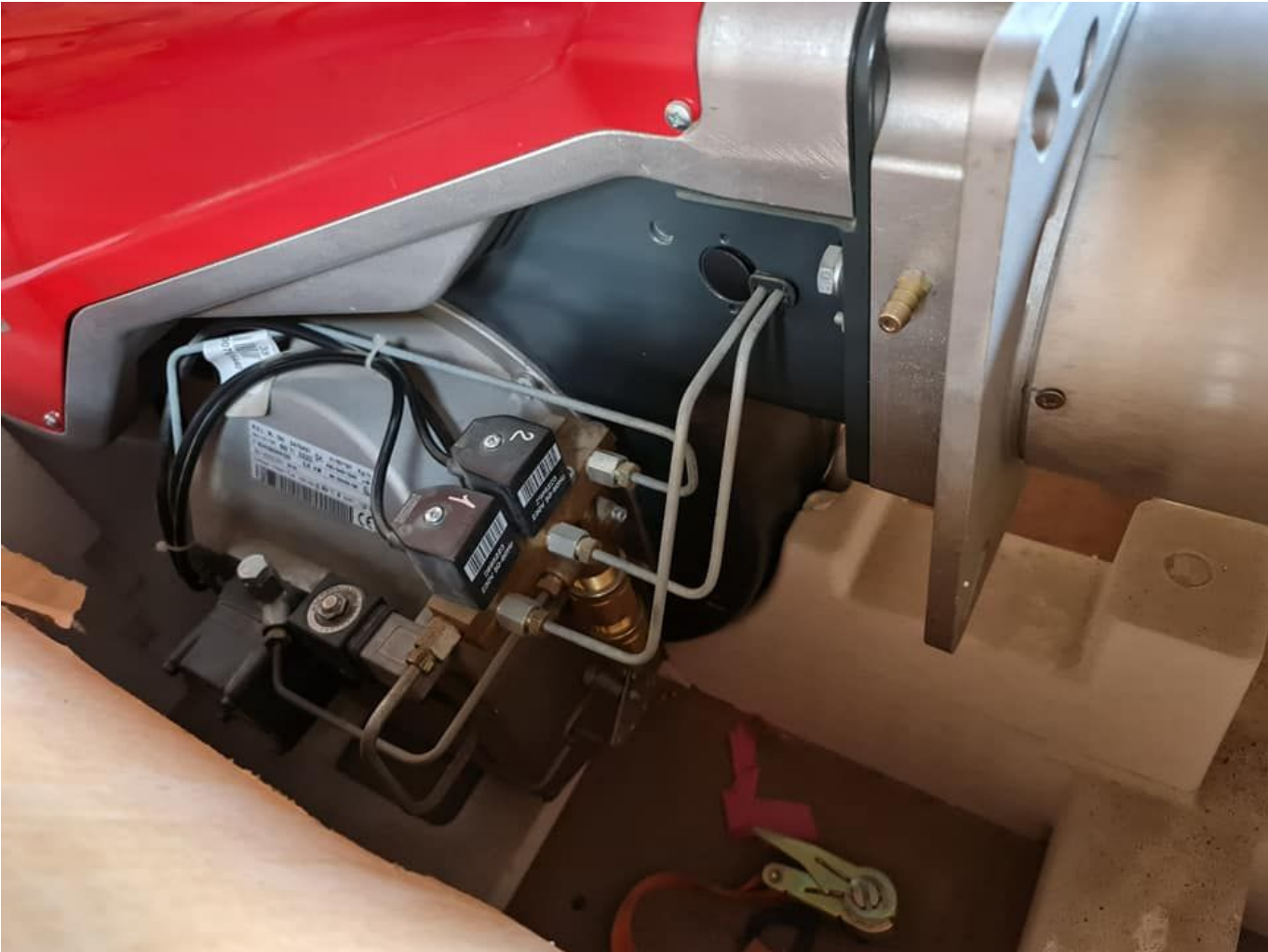
written by www.mbsm.pro | 29 January 2021



Private Picture Copyright : WWW.MBSM.PRO

MAZOUT, Brûleur, FIOUL, Combust, RIELLO, RBL, R.B.L, Baltur , POUR CHAURIDIÈRE DE CHAUFFAGE DOMESTIQUE





696440

R.E.L. RL 130 3475431		41/80+130 Kg/h
TIPO/TYP/TYPE 662 T1	DZZO	486/948+1540 kW
N° 02428000129	2,6 kW	BN 5G426/99
3N~400/230V 50 Hz		
Combust. / Heizöl / Fuel max.visc @ 20 °C 6 mm ² /s (1,5°E)		

CE



Private Picture Copyright : WWW.MBSM.PRO

R.B.L.	RL 190	3092152		64/120+206 Kg/h
TPO/TYP/TYPE	2152D	DZZO		759/1423+2443 KV
N°	02478000225	5,5 kW		
3N ~ 400/230V		50 Hz		
Combust./Heizöl/Fuel max.visc @ 20°C 6 mm \varnothing (1,5"E)				
<small>RELO S.p.A. I-37045 Legnago (VR)</small>				









Private Picture Copyright : WWW.MBSM.PRO

baltur

Cento (FE)
s.r.l.

BGN 300P

N. Matr. 2240049 Anno 1995
Serial Nr. 2240049 Year 1995
Combustibile Metano
Fuel Natural gas
Bistadio Basse pressione
Two stage Low pressure
Gas Categoria I
Potenza termica nom 7.5 kW
Rated input 7.5 kW
3N 50 Hz 220-380 V MADE IN ITALY

1	2	3	4	5	6
collegato in linea					

N02488000983	TIPO/TYP TYPE	2116 0	220 V ~ 50/60 Hz	0.9 kW
		80 ÷ 450 Kg/h	950 ÷ 5200	kW
Combust. Heizöl / Fuel	max. visc. @	50°C	500 mm ² /s (65 °E)	0224
TI 10 PR 50°2116				R.B.L.
		<input type="checkbox"/> DUE STADI PROGRESSIVI GLEITEND ZWEISTUFIG		
		<input type="checkbox"/> MODULANTE MODULIEREND		





