

# COMPRESSEUR, Dongbei, (Donper) ,LBP , S série, S43CZ , 1/7Hp, R134a, RSIR

Category: compressor

written by www.mbsm.pro | 29 May 2020

制冷剂 Refrigerant	应用类型 Application	型号 Model	马力 Power	气缸容积 Displacement	冷却方式 Cooling	电机类型 Motor Type	电源 Power Supply	制冷量 Cooling Capacity												COP		运行电容 Run Capacitor	启动电容 Start Capacitor	
								ASHRAE												CECCOMF	ASH-RAE			CECCOMF
								-35	-30	-25	-23.3	-20	-15	-10	-5	0	-25	-23.3	-25	w/w	w/w			μ F
D系列 D Series																								
R134a	LBP	D25CZ	1/14	2.5	S	RSIR	220/50	18	28	42	55	65	86	116	145	182	42	0.95	0.72					
		D30CZ	1/12	3.0	S	RSIR	220/50	25	37	51	66	74	101	136	169	213	50	0.95	0.72					
		D43CZ	1/7	4.3	S	RSIR	220/50	43	66	84	106	114	152	196	250	320	82	1.07	0.81					
		D25BZ	1/10	2.5	S	RSIR	115/60	32	44	57	67	80	100	135	168	214	51	0.95	0.72					
		D30BZ	1/9	3.0	S	RSIR	115/60	36	50	65	72	88	119	150	200	270	55	0.96	0.72					
		D36BZ	1/8	3.6	S	RSIR	115/60	44	65	92	103	109	140	178	228	292	78	1.20	0.91					
直流变频DC Frequency Conversion Range																								
R134a	LBP	W20EZ	1/16	2.0	S	BDM	12-24VDC		28	40	45	56	76	102	130	165	34	1.17	0.89					
		W25EZ	1/14	2.5	S	BDM	12-24VDC		38	57	62	76	100	128	166	210	47	1.15	0.87					
S系列 S Series																								
R134a	LBP	S30CZ	1/12	3.0	S	RSIR	220/50	26	39	53	66	76	102	138	188	232	50	0.95	0.72					
		S36CZ	1/8	3.6	S	RSIR	220/50	35	53	75	90	104	139	180	242	307	68	1.05	0.80					
		S43CZ	1/7	4.3	S	RSIR	220/50	43	66	84	106	114	152	196	250	320	81	1.07	0.81					
		S53CZ	1/6-	5.3	S	RSIR	220/50	46	72	106	118	145	195	246	320	388	90	1.15	0.87					
		S30BZ	1/10	3.0	S	RSIR	115/60	36	50	65	72	88	119	150	200	270	55	0.96	0.73					
		S36BZ	1/7	3.6	S	RSIR	115/60	44	65	92	103	109	140	178	228	292	78	1.10	0.84					
		S43BZ	1/6-	4.3	S	RSIR	115/60	48	74	108	125	150	206	270	336	412	95	1.16	0.88					
		S53BZ	1/6+	5.3	S	RSIR	115/60	50	90	131	145	172	226	300	380	468	110	1.18	0.90					
		SK30CZ	1/10	3.0	S	RSCR	220/50	36	55	74	80	98	132	166			61	1.25	0.95	4				
		SK36CZ	1/8	3.6	S	RSCR	220/50	40	62	86	95	114	158	206			72	1.25	0.95	4				
		SK43CZ	1/6-	4.3	S	RSCR	220/50	46	71	95	115	143	190	245			87	1.30	0.99	4				
		SK53CZ	1/6	5.3	S	RSCR	220/50	48	79	116	130	153	200	260			99	1.30	0.99	4				
		SK30BZ	1/8	3.0	S	RSCR	115/60	40	62	84	95	114	158	200			72	1.25	0.95	12				
		SK36BZ	1/6-	3.6	S	RSCR	115/60	47	73	98	120	138	188	250			91	1.30	0.99	12				
SK43BZ	1/6	4.3	S	RSCR	115/60	52	82	120	140	168	221	293			106	1.35	1.03	12						
SK53BZ	1/6	5.3	S	RSCR	115/60	55	95	138	158	180	237	304			120	1.35	1.03	12						



Private Picture Copyright: WWW.MBSM.PRO

## Specifications

Refrigerant	Application	Serris Model	Power	Displacement	Cooling	Motor Type	Power Supply
R134A	LBP	S	S30CZ	1/12	3.0	S	RSIR 220V/50HZ
			S36CZ	1/8	3.6	S	RSIR 220V/50HZ
			S43CZ	1/7	4.3	S	RSIR 220V/50HZ
			S53CZ	1/6-	5.3	S	RSIR 220V/50HZ
			S30BZ	1/10	3.0	S	RSIR 115V/60HZ
			S36BZ	1/7	3.6	S	RSIR 115V/60HZ
			S43BZ	1/6-	4.3	S	RSIR 115V/60HZ
			S53BZ	1/6+	5.3	S	RSIR 115V/60HZ
High Efficiency Range							
			SK30CZ	1/10	3.0	S	RSCR 220V/50HZ
			SK36CZ	1/8	3.6	S	RSCR 220V/50HZ
			SK43CZ	1/6-	4.3	S	RSCR 220V/50HZ
			SK53CZ	1/6	5.3	S	RSCR 220V/50HZ
			SK30BZ	1/8	3.0	S	RSCR 115V/60HZ
			SK36BZ	1/6-	3.6	S	RSCR 115V/60HZ

SK43BZ 1/6 4.3 S RSCR 115V/60HZ  
 SK53BZ 1/5 5.3 S RSCR 115V/60HZ

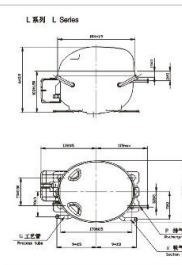
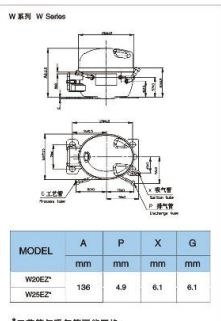
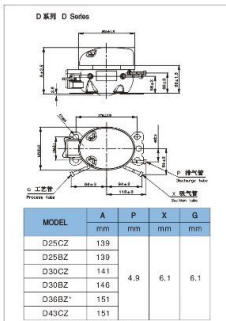
制冷剂 Refrigerant	应用类型 Application	型号 Model	马力 Power	气缸容积 Displacement	冷却方式 Cooling	电机类型 Motor Type	电源 Power Supply	制冷量 Cooling Capacity											COP			运行电容 Run Capacitor μF	启动电容 Start Capacitor μF
								ASHRAE											CECCM/W	ASHRAE	CECCM/W		
								-35	-30	-25	-23.3	-20	-15	-10	-5	0	-25	-23.3	-25	W/W	W/W		
HP	cm <sup>3</sup>	V/Hz	W	W	W	W	W	W	W	W	W	W	W	W	W	W	W	W					
D系列 D Series																							
R134a	LBP	D25CZ	1/14	2.5	S	RSIR	220/50	18	28	42	55	65	86	116	145	182	42	0.95	0.72				
		D30CZ	1/12	3.0	S	RSIR	220/50	25	37	51	66	74	101	136	169	213	50	0.95	0.72				
		D43CZ	1/7	4.3	S	RSIR	220/50	43	66	84	106	114	152	196	250	320	82	1.07	0.81				
		D25BZ	1/10	2.5	S	RSIR	115/60	32	44	57	67	80	100	135	168	214	51	0.95	0.72				
		D30BZ	1/9	3.0	S	RSIR	115/60	36	50	65	72	88	119	150	200	270	55	0.96	0.72				
		D36BZ	1/8	3.6	S	RSIR	115/60	44	65	92	103	109	140	178	228	292	78	1.20	0.91				
直流变频DC Frequency Conversion Range																							
R134	LBP	W20EZ	1/16	2.0	S	BDM	12-24VDC		28	40	45	56	76	102	130	165	34	1.17	0.89				
		W25EZ	1/14	2.5	S	BDM	12-24VDC		38	57	62	76	100	128	166	210	47	1.15	0.87				
S系列 S Series																							
R134a	LBP	S30CZ	1/12	3.0	S	RSIR	220/50	26	39	53	66	76	102	138	188	232	50	0.95	0.72				
		S36CZ	1/8	3.6	S	RSIR	220/50	35	53	75	90	104	139	180	242	307	68	1.05	0.80				
		S43CZ	1/7	4.3	S	RSIR	220/50	43	66	84	106	114	152	196	250	320	81	1.07	0.81				
		S53CZ	1/6-	5.3	S	RSIR	220/50	46	72	106	118	145	195	246	320	388	90	1.15	0.87				
		S30BZ	1/10	3.0	S	RSIR	115/60	36	50	65	72	88	119	150	200	270	55	0.96	0.73				
		S36BZ	1/7	3.6	S	RSIR	115/60	44	65	92	103	109	140	178	228	292	78	1.10	0.84				
		S43BZ	1/6-	4.3	S	RSIR	115/60	48	74	108	125	150	206	270	336	412	95	1.16	0.88				
		S53BZ	1/6+	5.3	S	RSIR	115/60	50	90	131	145	172	226	300	380	468	110	1.18	0.90				
		SK30CZ	1/10	3.0	S	RSCR	220/50	36	55	74	80	98	132	166			61	1.25	0.95	4			
		SK36CZ	1/8	3.6	S	RSCR	220/50	40	62	86	95	114	158	206			72	1.25	0.95	4			
		SK43CZ	1/6-	4.3	S	RSCR	220/50	46	71	95	115	143	190	245			87	1.30	0.99	4			
		SK53CZ	1/6	5.3	S	RSCR	220/50	48	79	116	130	153	200	260			99	1.30	0.99	4			
		SK30BZ	1/8	3.0	S	RSCR	115/60	40	62	84	95	114	158	200			72	1.25	0.95	12			
		SK36BZ	1/6-	3.6	S	RSCR	115/60	47	73	98	120	138	188	250			91	1.30	0.99	12			
		SK43BZ	1/6	4.3	S	RSCR	115/60	52	82	120	140	168	221	293			106	1.35	1.03	12			
		SK53BZ	1/6	5.3	S	RSCR	115/60	55	95	138	158	180	237	304			120	1.35	1.03	12			





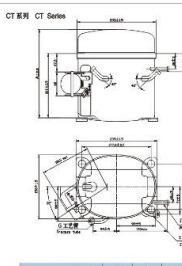
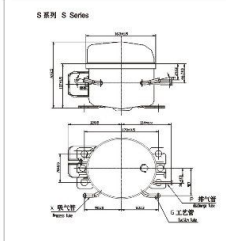
压缩机系列 Compressor Model	制冷剂 Refrigerant	排量 Capacity	电压 Voltage	功率 Power	启动方式 Start Method	电机类型 Motor Type	电源 Power Supply	制冷量 Cooling Capacity												COP		
								ASHRAE												ECCOM	ASHRAE	ECCOM
								30	35	40	45	50	55	60	65	70	75	80	85			
W	W	W	W	W	W	W	W	W	W	W	W	W	W	W	W	W	W	W	W	W		
<b>D系列 D Series</b>																						
R134a LBP	S	D30CZ	1114	2.5	RSR	220V	18	28	47	53	65	86	116	145	162	42	0.95	0.72				
		D30CZ	1112	3.0	RSR	220V	25	37	51	66	74	101	136	169	213	50	0.95	0.72				
		D30CZ	1177	4.3	RSR	220V	43	66	84	106	114	152	196	250	320	82	1.07	0.81				
		D36BZ	1110	2.5	RSR	115V	32	44	57	67	80	100	135	169	214	51	0.95	0.72				
		D36BZ	1179	3.0	RSR	115V	36	50	65	72	88	119	150	200	270	58	0.96	0.72				
		D36BZ	1181	3.6	RSR	115V	44	65	82	103	109	140	178	228	292	78	1.20	0.91				
<b>变频变频DC Frequency Conversion Range</b>																						
R134a LBP	S	W26Z	1116	2.0	BLOM	3-3VDC	28	40	45	56	76	102	130	165	34	1.17	0.89					
		W26Z	1114	2.5	BLOM	3-3VDC	38	57	62	76	100	128	166	210	47	1.15	0.87					
<b>S系列 S Series</b>																						
R134a LBP	S	S30CZ	1112	3.0	RSR	220V	39	59	66	76	102	138	180	232	50	0.95	0.72					
		S36CZ	1178	3.6	RSR	220V	35	53	75	90	104	139	180	242	307	68	1.05	0.80				
		S43CZ	1177	4.3	RSR	220V	43	66	84	106	114	152	196	250	320	81	1.07	0.81				
		S33CZ	1181	3.3	RSR	220V	48	72	116	118	145	185	248	300	388	90	1.15	0.87				
		S33CZ	1110	3.0	RSR	115V	38	50	65	72	88	119	150	200	270	55	0.96	0.73				
		S36BZ	1177	3.6	RSR	115V	44	65	92	103	109	140	178	228	292	78	1.10	0.84				
		S43BZ	1181	4.3	RSR	115V	48	74	108	125	150	206	270	336	412	95	1.16	0.88				
		S33BZ	1181	3.3	RSR	115V	50	90	131	145	172	226	300	380	468	110	1.18	0.90				
		SK30CZ	1110	3.0	RSR	220V	38	55	74	80	96	132	168	216	276	61	1.29	0.95	4			
		SK30CZ	1178	3.6	RSR	220V	40	62	86	95	114	158	206	272	328	72	1.29	0.95	4			
		SK40CZ	1181	4.3	RSR	220V	46	71	95	115	143	190	245	310	380	87	1.30	0.99	4			
		SK30CZ	1178	3.3	RSR	220V	48	73	116	130	153	200	260	330	410	99	1.30	0.99	4			
SK30BZ	1178	3.0	RSR	115V	40	62	84	95	114	158	200	272	328	72	1.29	0.95	12					
SK36BZ	1181	3.6	RSR	115V	47	73	98	120	138	188	250	310	390	91	1.30	0.99	12					
SK36BZ	1176	4.3	RSR	115V	52	82	120	140	168	221	293	366	456	106	1.35	1.03	12					
SK36BZ	1175	5.3	RSR	115V	55	95	138	158	180	237	304	380	470	120	1.35	1.03	12					
<b>L系列 L Series</b>																						
R134a LBP	S	L30CZ	1181	5.8	RSR	220V	80	130	145	169	223	291	370	460	110	1.22	0.93					
		L30CZ	1175	6.5	RSR	220V	85	141	160	181	231	303	383	478	122	1.25	0.95					
		L72CZ	1174	7.2	RSR	220V	85	106	163	190	225	296	377	474	588	144	1.28	0.97				
		L76CZ	1173	7.6	F1	RSR	220V	82	130	190	220	283	360	448	560	167	1.35	1.03				
		L83CZ	1175	6.5	RSR	220V	85	106	162	185	225	296	377	474	588	144	1.28	0.97				
		L83CZ	1175	4.3	RSR	115V	82	120	140	160	200	260	330	410	500	108	1.45	1.10	12			
L83BZ	1174	5.8	RSR	115V	82	108	160	170	220	285	365	450	550	120	1.50	1.14	12					
L83CZ	1175	5.8	RSR	220V	82	91	131	142	176	228	295	370	460	108	1.45	1.10	4					
L83CZ	1175	5.8	RSR	220V	83	82	132	145	179	233	300	380	470	110	1.60	1.22	4					
<b>OD系列 OD Series</b>																						
R134a LBP	S	OD118CZ	1144	7.2	RSR	220V	77	120	182	200	266	360	467	582	152	1.28	0.97					
		OD118CZ	1173	6.2	F1	RSR	220V	82	136	206	230	303	407	520	178	1.28	0.97					
		OD118CZ	1181	6.8	RSR	220V	83	160	246	270	348	467	600	750	205	1.28	0.97					
		OD121CZ	1181	12.1	F1	RSR	220V	116	187	284	325	400	550	736	920	247	1.35	1.03	75			
		OD121CZ	1181	13.5	F1	RSR	220V	131	217	318	375	445	581	774	980	286	1.35	1.03	75			
		OD121CZ	1181	12.1	F1	RSR	220V	139	234	341	390	480	660	863	1100	290	1.35	1.03	75			

Donper (Donper) Compresseur série R134a LBP S série S43CZ  
压缩机外形尺寸 Compressor dimensions

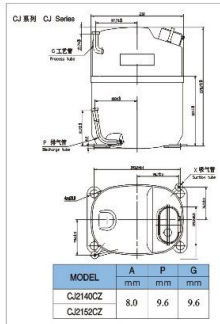


MODEL	A	P	X	G
mm	mm	mm	mm	mm
L58CZ*	163			
L65CZ*		4.9	6.1	6.1
L72CZ*	167			
L76CZ*	171			
L83CZ*	167			
LU43BZ*	167			
LU58BZ*	171			
LZ58CZ*	174			

\*工艺管与吸气管不能互换  
\*Suction tube and process tube can't be exchanged.



MODEL	A	P	X	G
mm	mm	mm	mm	mm
CT2134CZ	221	6.1	9.6	9.6



压缩机外形尺寸 Compressor dimensions

MODEL	A	B	P	X	G
mm	mm	mm	mm	mm	mm
E1118CZA*	185	120	4.9	6.1	6.1
E1120CZA*	193	120	4.9	6.1	6.1
E1121CZA*	196	125	6.1	8.1	6.1
E1130CZA*	196	125	6.1	8.1	6.1
E1134CZA*	185	120	4.9	6.1	6.1
EK1112CZ*	191	120	4.9	6.1	6.1
EK1116CZ*	191	120	4.9	6.1	6.1
EK1118CZ*	193	120	4.9	6.1	6.1
EK1120CZ*	193	120	4.9	6.1	6.1
EK1130CZ*	198	125	6.1	8.1	6.1
EK1134CZ*	198	125	6.1	8.1	6.1
EU1121CZ*	191	120	4.9	6.1	6.1
EU1130CZ*	191	120	4.9	6.1	6.1
EZ1110CZ*	193	120	4.9	6.1	6.1
EZ1112CZ*					
EZ1114CZ*					
EZ1116CZ*					
EZ1118CZ*					
EZ1120CZ*	198	125	6.1	8.1	6.1
EU1112BZ*	191	120	4.9	6.1	6.1
EU1115BZ*	193	120	4.9	6.1	6.1
EU1118BZ*	193	120	4.9	6.1	6.1
EU1119BZA*	198	125	6.1	8.1	6.1
EU1121BZ*	198	125	6.1	8.1	6.1
EU1121BZA*	191	120	4.9	6.1	6.1
NE1118BZ					
NE1121BZ					
NE1130BZ					
NB5165BZ					
NE6170BZ	196	125	6.1	8.1	6.1
NE6180BZ					
NE5165CZ					
NE5170CZ					
NE6188CZ					
NB5145CZ	185	120	4.9	6.1	6.1
NB5155CZ	185	120	4.9	6.1	6.1
NE6210CZ	196	125	6.1	8.1	