

Danfoss Refrigeration, R134a, GL90TG , 220-240V 50-60Hz, R134A , HBP , CSIR , compressor Haute pression avec condensateur

Category: Technologie, Tester ok
written by www.mbsm.pro | 4 May 2020



REDMI NOTE 8
AI QUAD CAMERA

Private Picture : www.MBSM.PRO

PDF

Mbsm_dot_pro_private_PDF_danfoss_GL90TG_R134a_230_60Télécharger

Type: Hermetic piston compressors

Producer: ACC

Series: HMBP

Model: GL90TG

General data

Refrigerant: R134a

Discharge element: C-V

Cooling: F

Maximum ambient temperature [$^{\circ}$ C]: 43

Compressor's data

Cylinder capacity [cm^3]: 8,9

Displacement [m^3/h]: 1,5

Weight [kg]: 10,8

Oil charge [cm^3]: 300

Oil type: ISO VG 22 ESTER

Engine's data

Engine type: CSIR

Power [KM]: 1/4

Starting element: HST

Power supply: 200V 50Hz

Voltage range: 170-242

Locked rotor current [A]: 12

Running winding resistance (25° C) [Ω]: 5,91

Starting winding resistance (25° C) [Ω]: 23,35

Electrical data

Relays: 9660 A 145, MTRP 46

Shielding element: MRP36AMK, T0171

Starting capacitor volume [μ F]:

Connections

milimeters inches

Suction/service tube: 6,5

Service/suction tube: 6,5

Discharge tube: 4,9



REDMI NOTE 8
AI QUAD CAMERA

Private Picture : www.MBSM.PRO

R134a ▼

Cooling capacity [W]

$t_c \setminus t_e$	-25	-20	-15	-10	-5	0	5	10
40	188	261	348	449	564	693	837	994
45	173	239	319	412	520	642	778	928
50	158	217	289	376	476	591	719	862
55	143	194	259	339	432	539	661	796
60	-	-	-	302	388	488	602	730

Power input [W]

$t_c \setminus t_e$	-25	-20	-15	-10	-5	0	5	10
40	175	195	215	237	260	284	309	335
45	175	198	222	246	272	299	327	356
50	175	201	228	256	285	315	346	378
55	175	204	234	265	297	330	365	400
60	-	-	-	274	310	346	383	422

Current [A]

$t_c \setminus t_e$	-25	-20	-15	-10	-5	0	5	10
40	1.75	1.78	1.82	1.88	1.96	2.05	2.15	2.27
45	1.75	1.79	1.85	1.92	2.01	2.11	2.23	2.36
50	1.75	1.81	1.88	1.96	2.06	2.18	2.31	2.45
55	1.75	1.82	1.90	2.00	2.11	2.24	2.38	2.54
60	-	-	-	2.04	2.16	2.31	2.46	2.63

Private Picture : www.MBSM.PRO

Mass flow [kg/s]

$t_c \setminus t_e$	-25	-20	-15	-10	-5	0	5	10
40	1.89	2.59	3.45	4.46	5.63	6.97	8.46	10.11
45	1.77	2.43	3.25	4.22	5.36	6.66	8.11	9.73
50	1.64	2.26	3.05	3.99	5.09	6.35	7.76	9.34
55	1.52	2.10	2.85	3.75	4.81	6.04	7.42	8.96
60	-	-	-	3.51	4.54	5.73	7.07	8.57

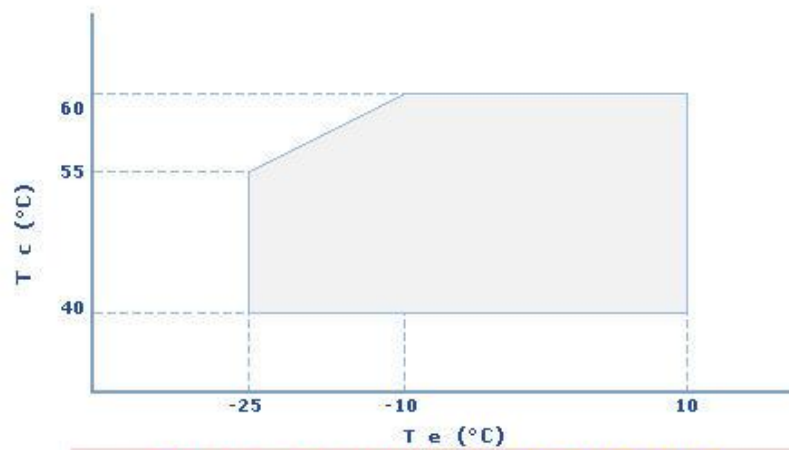
C.O.P. [W/W]

$t_c \setminus t_e$	-25	-20	-15	-10	-5	0	5	10
40	1.08	1.34	1.62	1.90	2.17	2.44	2.71	2.97
45	0.99	1.21	1.44	1.67	1.91	2.15	2.38	2.60
50	0.90	1.08	1.27	1.47	1.67	1.88	2.08	2.28
55	0.82	0.95	1.11	1.28	1.45	1.63	1.81	1.99
60	-	-	-	1.10	1.25	1.41	1.57	1.73

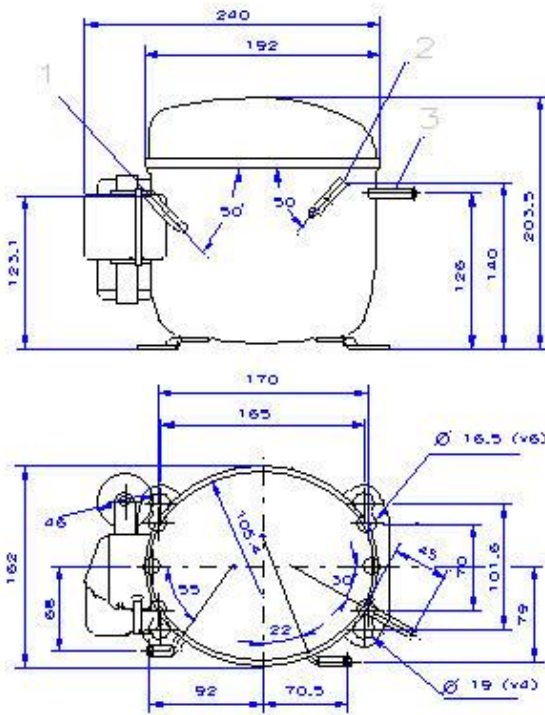
Operating conditions: ASHRAE

t_c - Condensing temperature [°C]

t_e - Evaporating temperature [°C]

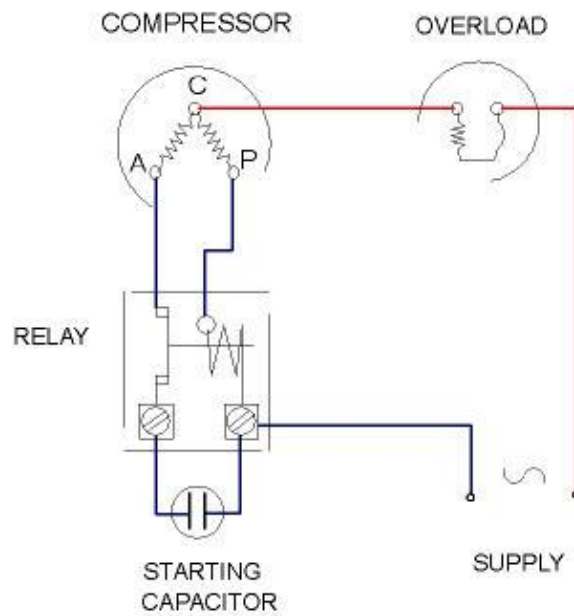
Application range

Private Picture : www.MBSM.PRO



Private Picture : www.MBSM.PRO

CSIR



Private Picture : www.MBSM.PRO