

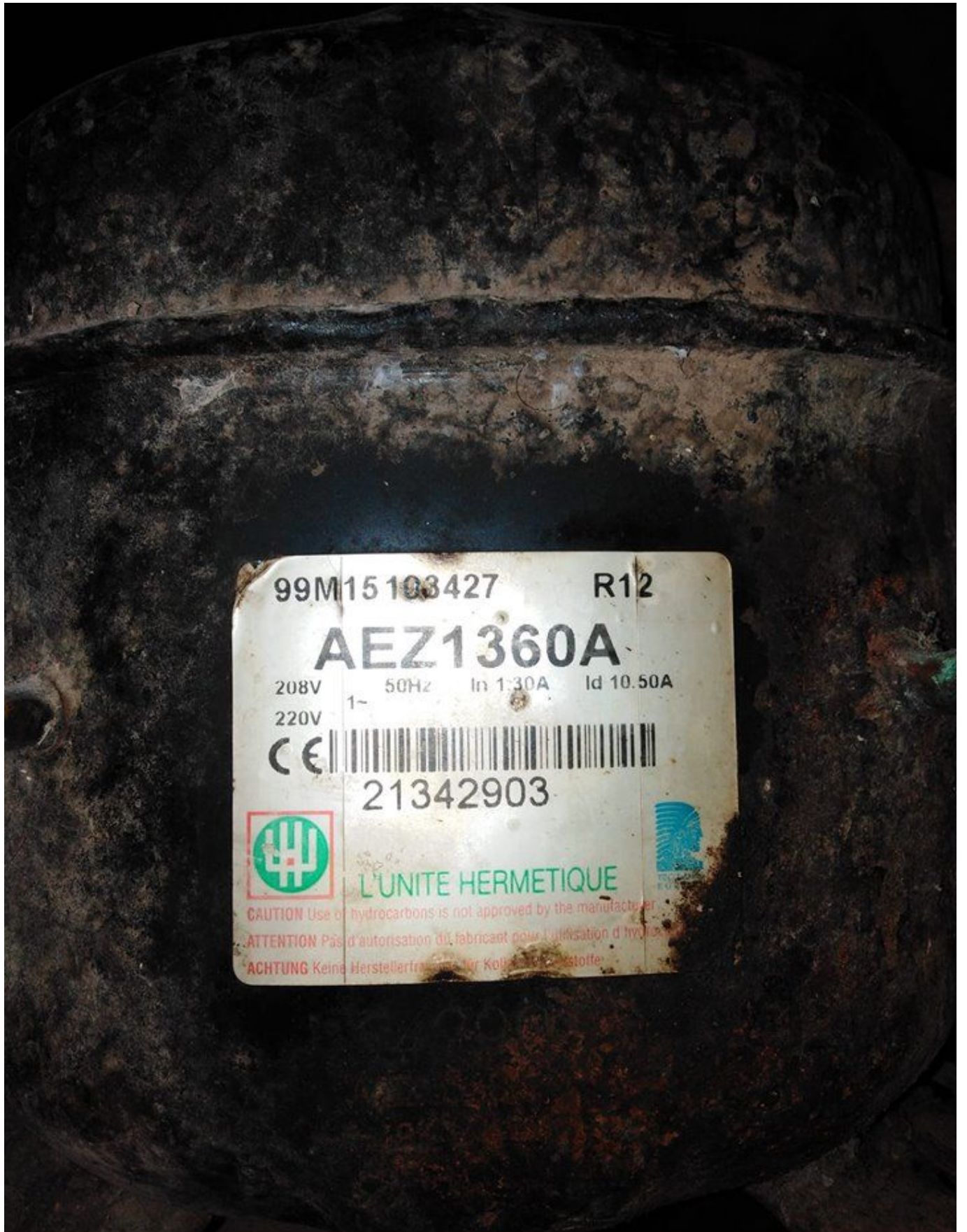
www.mbsm.pro, AEZ1360A, Kirby,  
Tecumseh, Compressors ,low back,  
pressure, models, 240v/50HT , 1PH ,  
1/5Hp , Gaz 12A

Category: Solutions,Technologie,Tester ok  
written by www.mbsm.pro | 11 January 2019



PictureS Mbsm Dot Pro : [www.mbsm.pro](http://www.mbsm.pro)

AEZ1360A, Kirby, Tecumseh, Compressors ,low back, pressure, models, 240v/50HT , 1PH , 1/5Hp , Gaz 12A



Points forts : Compresseur aez1360a pour

# réfrigérateur fagor FAGOR MA-10CA562COMP-QZQAZ

CAT. NO.	MODEL	HP (1)	Refrig.	Cylinder Displacement cm <sup>3</sup> /rev	Motor Type (2)	Expansion Device (3)	Cooling (4)	CAPACITY – WATTS (BTU/HR) (5)				
								EVAPORATING TEMPERATURE				
								-40°C	-35°C	-23.3°C	-15°C	-10°C
-40°F	-31°F	-10°F	+5°F	+14°F								
258103	AEZ1332A	1/10	12	4.05	RSIR	C	N/F		18 (60)	73 (248)	121 (412)	156 (532)
258104	AEZ1336A	1/8	12	4.50	RSIR	C	N/F		29 (100)	90 (308)	143 (488)	178 (608)
258105	AEZ1343A	1/6	12	5.50	RSIR	C	N/F		41 (140)	108 (368)	179 (612)	223 (760)
258106	AEZ1360A	1/5	12	7.55	RSIR	C	OC		65 (220)	158 (540)	246 (840)	302 (1032)
	AEZ1360A	1/5	12	7.55	RSIR	C	N/F					
258107	AEZ1380A	1/4	12	8.85	RSIR	C	OC		94 (320)	204 (696)	317 (1080)	387 (1320)
	AEZ1380A	1/4	12	8.85	RSIR	C	N/F					
258100	CAE4ZF11	1/4	12	8.85	CSIR	C/V	F					
	AE1410A	1/3	12	12.05	RSIR	C	OC		117 (400)	276 (940)	434 (1480)	528 (1800)
258108	AE1410A	1/3	12	12.05	RSIR	C	F					
25895	CAE2410A	1/3	12	12.05	CSIR	C/V	F					
25896	CAE2412A	3/8	12	14.15	CSIR	C/V	F		158 (540)	346 (1180)	498 (1700)	621 (2120)
25894	AE1417L	1/2	502	11.30	RSIR	C	F	117 (400)	176 (600)	422 (1440)	645 (2200)	821 (2800)
258111	CAJ2428L	1/2	502	15.20	CSIR	C/V	F	176 (600)	264 (900)	633 (2160)	997 (3400)	1243 (4240)
258115	CAJ2T12	1/2	12	26.15	CSIR	C/V	F		235 (800)	621 (2120)	985 (3360)	1231 (4200)
258112	CAJ2446L	3/4	502	26.15	CSR	C/V	F	322 (1100)	469 (1600)	997 (3400)	1548 (5280)	1934 (6600)



PictureS Mbsm Dot Pro : [www.mbsm.pro](http://www.mbsm.pro)

Modèles d'appareils concernés: – CAV999GTH – CAV999GTHF – CFG24 – CFG24 – CFV265 – CFV265F – CFV275 – CFV275A – CFV275 – CFV275H – CFV275 – CFV275I – CFV275 – CFV275J – CFV275 – CFV275K – CRISTAL27 – CRISTAL27F – CRISTAL278 – CRISTAL278F – CRISTAL28 – CRISTAL28F – CRISTAL32 – CRISTAL32A – CRISTAL32 – CRISTAL32B – CRISTAL32 – CRISTAL32F – CVH21 – CVH21A – CVH21 – CVH21F – CVH21 – CVH21G – CVL215 – CVL215F – CVL215 – CVL215S – CVL215 – CVL215T – CVL215 – CVL215U – CVL26 – CVL26A – CVL26 – CVL26F – CVL265 – CVL265F – CVL265 – CVL265R – CVL265 – CVL265S – CVL265 – CVL265T – CVL265 – CVL265U – CVL265 – CVL265V – CVL265 – CVL265W – CVT280 – CVT280H – CVT280 – CVT280J – CVT280 – CVT280K – DF1275 – DF1275F – DF24 – DF24F – DF24 – DF24G – DF246 – DF246F – DF246 – DF246R – DF246

– DF246T – DF246 – DF246U – DF246 – DF246V – DF27 – DF27F – DF27 – DF27G – DF275  
– DF275F – DF275 – DF275R – DF275 – DF275T – DF275 – DF275U – DF277 – DF277F –  
DF277 – DF277G – DF2775 – DF2775F – DF2775 – DF2775G – DF2800 – DF2800 – DF2800  
– DF2800F – DF2800 – DF2800R – DF2800 – DF2800S – DF2800 – DF2800T – DF2800 –  
DF2800U – DF29 – DF29F – DF29 – DF29G – DF32 – DF32 – DF32 – DF32F – DF32 –  
DF32L – DF325 – DF325F – DF325 – DF325L – DF7275 – DF7275 – DF7275 – DF7275F –  
DF7275 – DF7275R – DF7275 – DF7275T – DF7275 – DF7275U – DF7275 – DF7275V –  
DF8275 – DF8275F – DF8275 – DF8275G – DF8275 – DF8275H – DP4922 – DP4922 –  
DP4922 – DP49221 – DP4922 – DP49221J – DP4922 – DP49221K – DP4922 – DP49221UM –  
DP4922 – DP4922H – DP4922 – DP4922UM – DS3000 – DS3000F – DU315 – DU315F – DU315  
– DU315R – DU315 – DU315S – DU315 – DU315T – DU315 – DU315U – DU3175 – DU3175F –  
DU3175 – DU3175G – DU32 – DU32A – DU32 – DU32B – DU32 – DU32F – DU35 – DU35A –  
DU35 – DU35B – DU35 – DU35F – DU35 – DU35G – DU350 – DU350F – DU350 – DU350R –  
DU350 – DU350S – DU350 – DU350T – DU350 – DU350U – DU355 – DU355F – DU355 –  
DU355R – DU355 – DU355S – DU355 – DU355T – DU355 – DU355U – DU355 – DU355V –  
DU357 – DU357A – DU357 – DU357B – DU357 – DU357F – DU357 – DU357G – DU3570 –  
DU3570F – DU3575 – DU3575F – DU3575 – DU3575G – DU36 – DU36A – DU36 – DU36B –  
DU36 – DU36F – DU36 – DU36G – DU367 – DU367A – DU367 – DU367B – DU367 – DU367F –  
DU367 – DU367G – DU0330E – DU0330EF – DU0330E – DU0330EG – DU0352E – DU0365ES –  
DU0365E – DU0365E – DU0365E – DU0365EF – DU0365E – DU0365EG – DU0365E – DU0365EH  
– DU0365E – DU0365EI – DU0365E – DU0365ER – DU0366T – DU0366TF – DU036X – DU36XF  
– DU0430LX – DU0430LXF – DU0465LX – DU0465LXF – DV33 – DV33A – DV33 – DV33B –  
DV33 – DV33F – DV33 – DV33G – DV337 – DV337A – DV337 – DV337B – DV337 – DV337F –  
DV337 – DV337G – DV3378 – DV3378F – DV338 – DV338F – DV338 – DV338R – DV338 –  
DV338S – DV338 – DV338T – DV338 – DV338U – FA1325 – FA1325G – FCD330 – FCD330F –  
FCD330 – FCD330G – FCD370 – FCD370F – FCD370 – FCD370G – FDT260 – FDT260F –  
FDT290 – FDT290F – GS210 – GS210B – GS210 – GS210F – K150 – K150 – K150 – K150A  
– K150 – K150B – K150 – K150F – K150 – K150G – RHONE300 – RHONE300G – RHONE300 –  
RHONE300H – SF306EV – SF306EVF – SFV350 – SFV350F – SI2010 – SI2010 – SI2010 –  
SI2010A – SI2010 – SI2010F – SI2010 – SI2010H – SI2011 – SI2011 – SI2011 –  
SI2011F – SI2011 – SI2011G – SI2011WG – SI2011 – SI3010 – SI3010 – SI3010 –  
SI3010A – SI3010 – SI3010F – SI3010 – SI3010H – SI3010N – SI3010NF – SI3010N –  
SI3010NG – SI3011 – SI3011 – SI3011 – SI3011F – SI3011 – SI3011G – SI3011WG –  
SI3011 – SI3090 – SI3090G – SI3090 – SI3090H – SI3810 – SI3810 – SI3810 –  
SI3810A – SI3810 – SI3810F – SI3810 – SI3810G – SI3810 – SI3810H – SI3810N –  
SI3810NF – SI3810N – SI3810NG – SI3811 – SI3811 – SI3811 – SI3811F – SI3811 –  
SI3811G – SI3890 – SI3890G – SI3890 – SI3890H – SI4610 – SI4610 – SI4610 –  
SI4610A – SI4610 – SI4610F – SI4610 – SI4610H – SI4610N – SI4610NF – SI4610N –  
SI4610NG – SI4611 – SI4611 – SI4611

Référence : MA-10CA562COMP-QZQAZ

R12

**AEZ1360A**

208-220V - 50Hz In 1.30A Id 10.50A



S/N: 03J08 192746  
6134290300



L'UNITE HERMETIQUE

**CAUTION:** Use of hydrocarbons is not licensed by the manufacturer.  
**ATTENTION:** Lire l'étiquette et les notices de l'appareil.  
**AVVERTENZA:** L'uso di idrocarburi è vietato dal produttore.

99-0-1